

UNITED STATES PUBLIC LAND SURVEY CORNER CERTIFICATE

OF

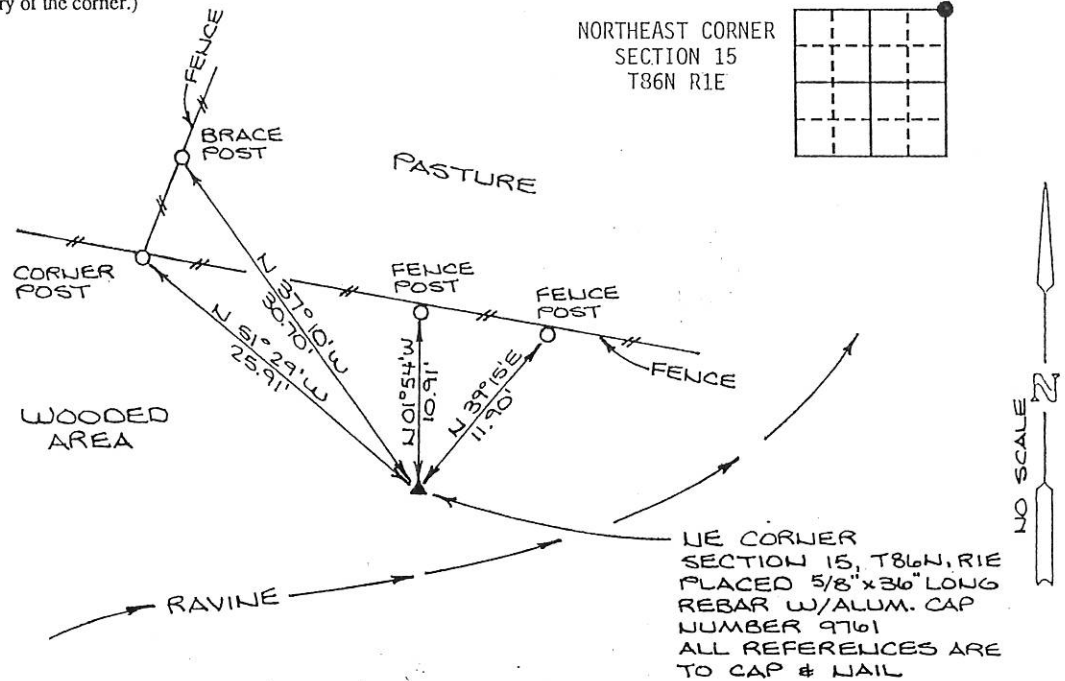
Land Survey Monuments situated in Section 15, Township 86 North, Range 1 East, of the Fifth Principal Meridian, Jackson County, Iowa.
Previously recorded in DOES NOT APPLY in County Recorder's Office.
(book, page, document number, etc.)

(Show reason for preparing this certificate, the evidence and detailed procedures used in establishing the corner positions and monumentation found or placed.)

Monument Description and Remarks: Restored the Northeast Corner, Section 15, T86N,
R1E from collateral evidence and placed a 5/8 inch rebar monument 36 inches long
with aluminum cap. See reverse side of this certificate for additional information.

PLAN - VIEW

(Show a minimum of three reference ties to durable physical objects, relevant monuments and physical conditions that will enable recovery of the corner.)



FROM THIS CORNER, THE $N\frac{1}{4}$ CORNER OF SECTION 15 BEARS S 89° 44' 09" E, 2594.30 FEET.

I hereby certify that the survey work was completed and this certificate was prepared by me or under my direct personal supervision and that I am a duly registered land surveyor under the laws of the state of Iowa.

Signature: Lawrence A. Boyer

Name typed or printed: Lawrence A. Boyer

Date: May 4, 1991 Reg. No. 9761

Wallace Holland Kastler
Schmitz & Co.
120 Bryant Street
Dubuque, Iowa 52001

SEAL



Project 4856

Corners	Section	Twp	Range
NE	15	T86N	R1E

FILE NO. 2608
BOOK 1 PAGE 38

1991 MAY 30 AM 9:47

SHIRLEY RITENOUR
JACKSON COUNTY, IOWA
RECORDER

See 10.00

NORTHEAST CORNER SECTION 15, T86N, R1E OF THE 5TH PM

Original government corner established in 1837:

Set post, Bur Oak 9 S. 53 E 89 lks

Bur Oak 8 S. 30 W 99 lks

No other survey records showing corner location were found in the Jackson County Courthouse.

Corner area is in a ravine coursing Southwest to the Northeast through pasture and wooded land. Found several fences with irregular courses due to the ravine. Found ground level remains of an older fence following an easterly course approximately 200 feet east of the corner area. Found well established fence coursing south approximately 150 feet south of the corner area. Set temporary corner location inline with the east and south fences. This location is 2652.5 feet south of a well established fence corner near the E 1/4 corner of Section 10, T86N, R1E and 2661.0 feet north of a well established fence corner near the E 1/4 corner of Section 15, T86N, R1E. This results in the temporary corner location being 4.25 feet north and 4.7 feet west of the midpoint between these distance checks. The temporary corner location is 2664.1 feet west of a well established fence corner near the N 1/4 corner of Section 14, T86N, R1E, compared to the government distance of 2638.68 feet (39.98 chs.). The temporary corner location is 210 feet west of the centerline of a well defined drainage way coursing Northeast compared to the government distance called for being 202.62 feet (3.07 chs.).

Restored the corner position from collateral evidence at the temporary corner location as checked and placed a 5/8 inch rebar monument 36 inches long with aluminum cap and prepared this certificate to perpetuate corner location.

UNITED STATES PUBLIC LAND SURVEY CORNER CERTIFICATE

OF

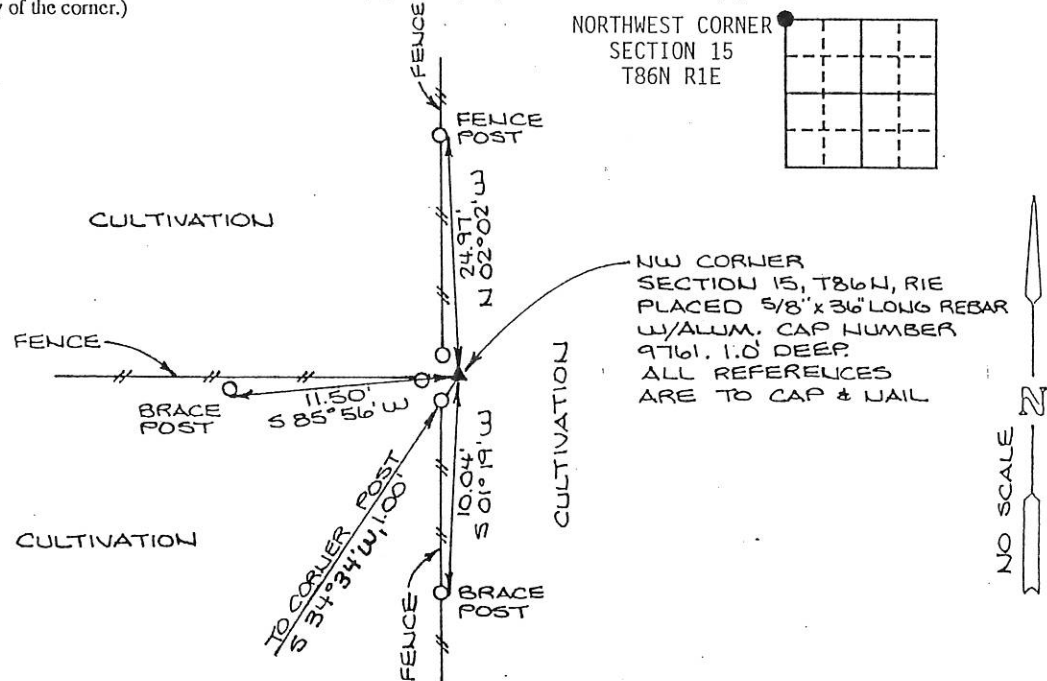
Land Survey Monuments situated in Section 15, Township 86 North, Range 1 East, of the Fifth Principal Meridian, Jackson County, Iowa.
Previously recorded in DOES NOT APPLY in County Recorder's Office.
(book, page, document number, etc.)

(Show reason for preparing this certificate, the evidence and detailed procedures used in establishing the corner positions and monumentation found or placed.)

Monument Description and Remarks: Restored the Northwest Corner, Section 15, T86N,
R1E from collateral evidence at the location of base remains of an old corner post.
Placed a 5/8 inch rebar monument 36 inches long with aluminum cap. See reverse
side of this certificate for additional information.

PLAN - VIEW

(Show a minimum of three reference ties to durable physical objects, relevant monuments and physical conditions that will enable recovery of the corner.)



FROM THIS CORNER, THE NW CORNER OF SECTION 15 BEARS N 90° 00' 00" E, 2594.30 FEET
AND THE CENTER OF COUNTY ROAD Y31 BEARS N 90° 00' 00" E, 1195.5 FEET.

I hereby certify that the survey work was completed and this certificate was prepared by me or under my direct personal supervision and that I am a duly registered land surveyor under the laws of the state of Iowa.

Signature: Lawrence A. Boyer
Name typed or printed: Lawrence A. Boyer
Date: May 4, 1991 Reg. No. 9761

Wallace Holland Kastler
Schmitz & Co.
120 Bryant Street
Dubuque, Iowa 52001

SEAL



Project 4856

Corners	Section	Twp	Range
NW	15	T86N	R1E

FILE NO. 2609
BOOK 1 PAGE 40

1991 MAY 30 AM 9:47

SHIRLEY RITENOUR
JACKSON COUNTY, IOWA
RECORDER

See 10.09

1-13-09 See Corner Certificate Book 2 Page 645 # 09-118

NORTHWEST CORNER SECTION 15, T86N, R1E OF THE 5TH PM

Original government corner established in 1837:

Set post, B. Oak 16 N. 26 W. 1.25 Ch.

B. Oak 18 S. 6 1/2 E. 4.87 Ch.

No other survey records showing corner location were found in the Jackson County Courthouse.

Found three existing corner posts and well established fences north, south and west dividing cultivated fields. Excavated and found remains of old fence wire and the base remains of an old corner post with several stones 18 inches deep. These remains were within the area enclosed by the corner posts. Further excavation revealed no other evidence. This location is 1338.4 feet south of a well established fence corner near the NW corner of the SW1/4 SW1/4 Section 10, T86N, R1E and 1317.8 feet north of a well established fence corner near the SW corner of the NW1/4 NW1/4 Section 15, T86N, R1E.

Restored the corner position from collateral evidence at the location of base remains of an old corner post 18 inches deep and placed a 5/8 inch rebar monument 36 inches long with aluminum cap and prepared this certificate to perpetuate corner location.

UNITED STATES PUBLIC LAND SURVEY CORNER CERTIFICATE

OF

Survey Monuments situated in Section 15, Township 86 North, Range East, of the Fifth Principal Meridian, Jackson County, Iowa.
 previously recorded in DOES NOT APPLY in County Recorder's Office.
 (book, page, document number, etc.)

(Show reason for preparing this certificate, the evidence and detailed procedures used in establishing the corner positions and monumentation found or placed.)

Monument Description and Remarks: Restored the North Quarter Corner, Section 15, T86N,

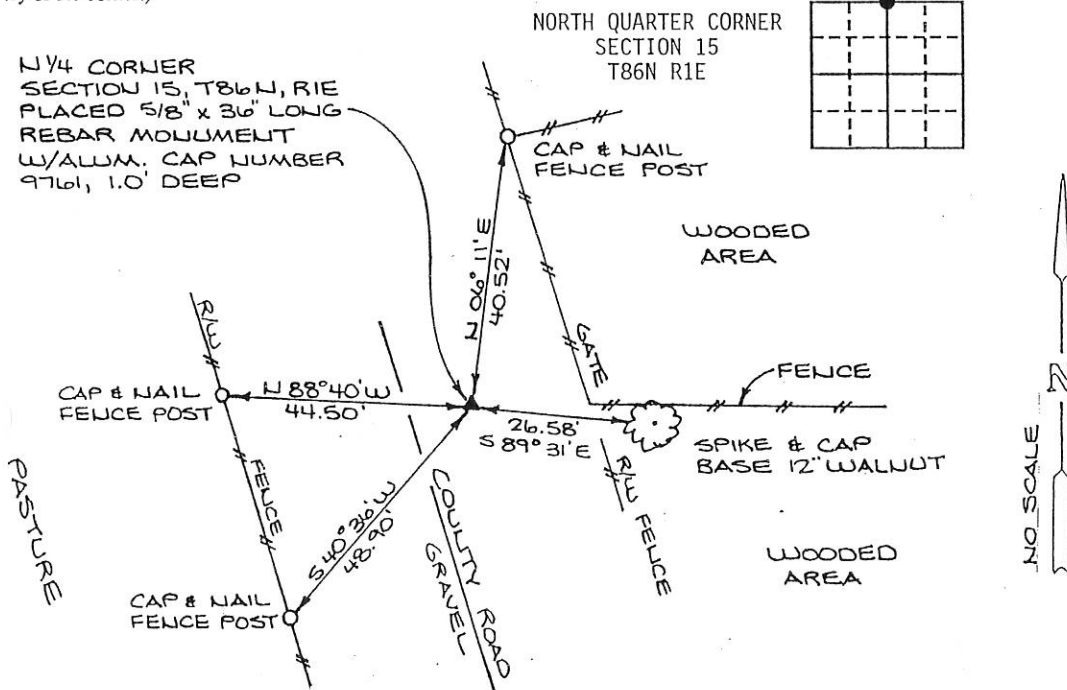
R1E mid-way between the restored NW and NE corners of Section 15 and inline with

collateral evidence. Placed a 5/8 inch rebar monument 36 inches long with aluminum

cap. See reverse side of this certificate for additional information.

PLAN - VIEW

(Show a minimum of three reference ties to durable physical objects, relevant monuments and physical conditions that will enable recovery of the corner.)



FROM THIS CORNER, THE NW CORNER OF SECTION 15 BEARS N 90° 00' 00" W, 2594.30 FEET
 AND THE NE CORNER OF SECTION 15 BEARS N 89° 44' 09" E, 2594.30 FEET.

I hereby certify that the survey work was completed and this certificate was prepared by me or under my direct personal supervision and that I am a duly registered land surveyor under the laws of the state of Iowa.

Signature: Lawrence A. Boyer

Name typed or printed: Lawrence A. Boyer

Date: May 4, 1991 Reg. No. 9761

Wallace Holland Kastler
 Schmitz & Co.
 120 Bryant Street
 Dubuque, Iowa 52001

OFFICIAL



Project 4856

Comers	Section	Twp	Range
N¼	15	T86N	R1E

FILE NO. 2610
 BOOK 1 PAGE 42
 1991 MAY 30 AM 9:47

SHIRLEY RITEROUR
 JACKSON COUNTY, IOWA
 RECORDER
Jun 10. 99

5-26-09 See Corner Certificate in Book 2 Page 673 as file # 09-2012

NORTH QUARTER CORNER SECTION 15, T86N, R1E OF THE 5TH PM

Original government corner established in 1837:

Set post, Br. Oak 10 S. 39 E. 17 lks.

Br. Oak 15 S. 62 W. 20 lks.

No other survey records showing corner location were found in the Jackson County Courthouse.

Corner area is near a county gravel road coursing Southeast to Northwest. Found older well established fence coursing east from county road. This fence divides areas of cultivation and wooded land. Found no marks, fences or other evidence, North or South, indicating the corner area in an East-West direction. Checked distance between the restored NW and NE corners of Section 15 to be 5188.60 feet, compared to the government distance of 5237.10 feet (79.35 chs.). Government field notes show approximately one chain discrepancy between the east and west half of the north line of Section 15. The east-west fence in the corner area checked to be 6.3 feet south of a straight line between the restored NW and NE corners of Section 15.

Restored the corner position mid-way between the restored NW and NE corners of Section 15 inline with the east-west fence as collateral evidence of corner location. Placed a 5/8 inch rebar monument 36 inches long with aluminum cap and prepared this certificate to perpetuate corner location.

UNITED STATES PUBLIC LAND SURVEY CORNER CERTIFICATE

OF

Land Survey Monuments situated in Section 15, Township 86 North, Range East, of the Fifth Principal Meridian, Jackson County, Iowa.
 usly recorded in DOES NOT APPLY in County Recorder's Office.
 (book, page, document number, etc.)

(Show reason for preparing this certificate, the evidence and detailed procedures used in establishing the corner positions and monumentation found or placed.)

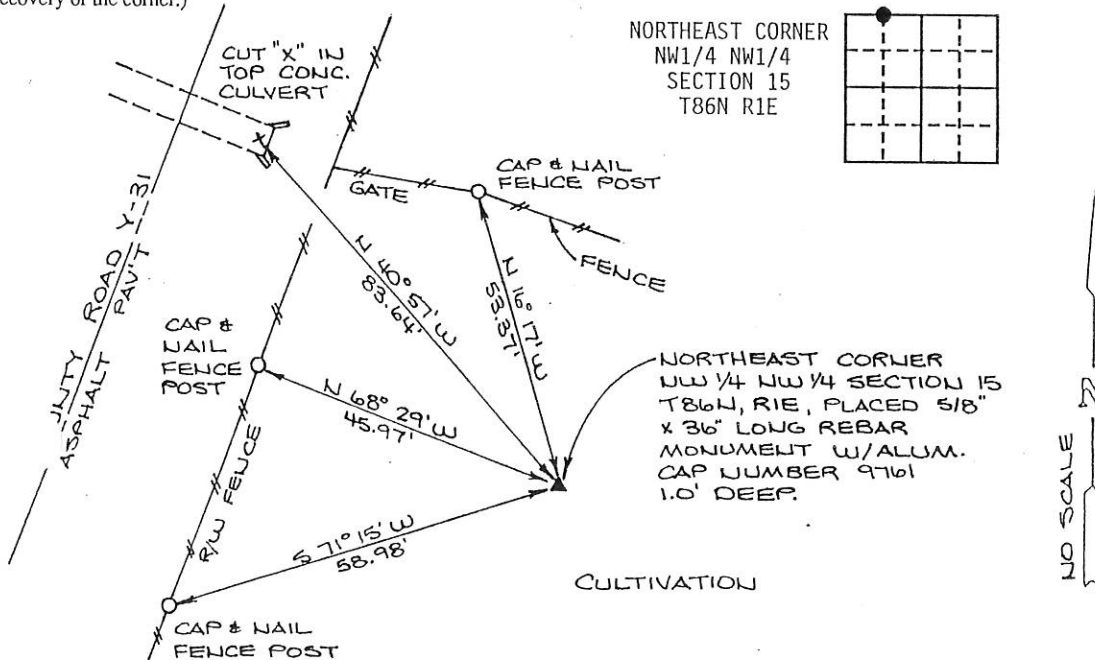
Monument Description and Remarks: Established the Northeast corner of the Northwest

Quarter of the Northwest Quarter, Section 15, T86N, R1E and placed a 5/8 inch

rebar monument 36 inches long with aluminum cap. See reverse side of this certificate
for additional information.

PLAN - VIEW

(Show a minimum of three reference ties to durable physical objects, relevant monuments and physical conditions that will enable recovery of the corner.)



FROM THIS CORNER, THE NW CORNER OF SECTION 15 BEARS N 90° 00' 00" W, 1297.15 FEET
 AND THE N 1/4 CORNER OF SECTION 15 BEARS N 90° 00' 00" E, 1297.15 FEET. ALSO, THE
 CENTER OF COUNTY ROAD Y31 BEARS N 90° 00' 00" W, 101.6 FEET.

I hereby certify that the survey work was completed and this certificate was prepared by me or under my direct personal supervision and that I am a duly registered land surveyor under the laws of the state of Iowa.

Signature: Lawrence A. Boyer
 Name typed or printed: Lawrence A. Boyer
 Date: May 4, 1991 Reg. No. 9761

Wallace Holland Kastler
 Schmitz & Co.
 120 Bryant Street
 Dubuque, Iowa 52001

SEAL



Project 4856

Corners	Section	Twp	Range
NE COR.	15	T86N	R1E
NW 1/4 NW 1/4			

FILE NO. 2611
 BOOK 1 PAGE 44

1991 MAY 30 AM 9:47

SHIRLEY RITENOUR
 JACKSON COUNTY, IOWA
 RECORDER

See 10.00

5-26-09 See Corner Certificate in Book 2 Page 673 as file # 09-2012

NORTHEAST CORNER NW1/4 NW1/4, SECTION 15, T86N, R1E OF THE 5TH PM

No survey records showing corner location were found in the Jackson County Courthouse.

Corner area is entirely within a cultivated field. No marks, fences or other evidence of corner location were found in the immediate area.

Established the corner position mid-way and on a straight line between the restored Northwest and North Quarter corners of Section 15, T86N, R1E. Placed a 5/8 inch rebar monument 36 inches long with aluminum cap and prepared this certificate to perpetuate corner location.

1998 MAY 11 A 10:08

IOW ENGINEERS & SURVEYORS, P.C., 4155 PENNSYLVANIA AVE, DUBUQUE, IOWA, (319) 556-2464
SIMPLY RIVER
RECORDED

UNITED STATES PUBLIC LAND SURVEY CORNER CERTIFICATE OF

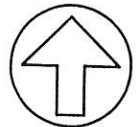
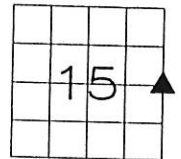
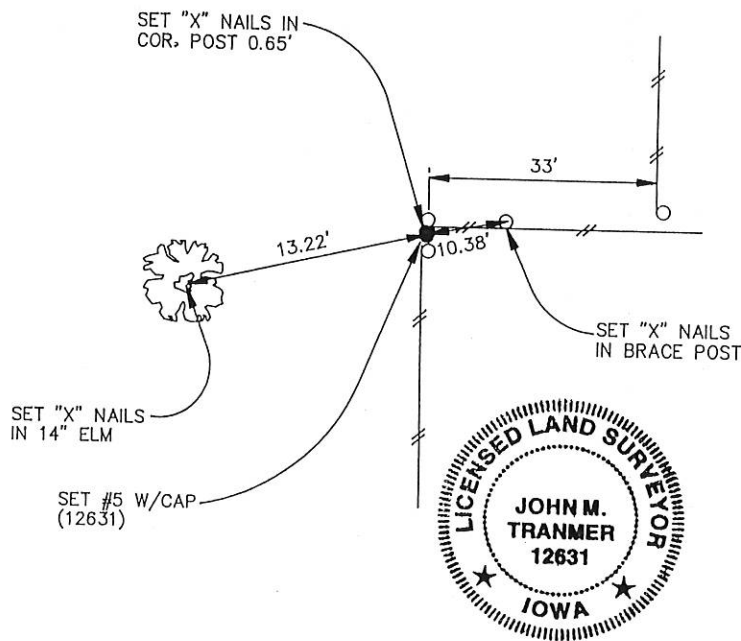
LAND SURVEY MONUMENTS SITUATED IN SECTION 15, TOWNSHIP 86 NORTH, RANGE 1 EAST
OF THE FIFTH PRINCIPAL MERIDIAN, JACKSON COUNTY, IOWA.
PREVIOUSLY RECORDED IN _____ IN COUNTY RECORDER'S OFFICE.

(Show reason for preparing this certificate, the evidence and detailed procedures used in establishing the corner positions and monumentation found or placed.)

Monument Description and Remarks: _____
E QUARTER CORNER, SECTION 15, T86N, R1E - SET #5 REROD W/CAP(12631) AT FENCE CORNER.

PLAN - VIEW

(Show a minimum of three reference ties to durable physical objects, relevant monuments and physical conditions that will enable recovery of the corner.)



NO SCALE

I HEREBY CERTIFY THAT THE SURVEY WORK WAS COMPLETED AND THIS CERTIFICATE WAS PREPARED BY ME OR UNDER MY DIRECT PERSONAL SUPERVISION AND THAT I AM A DULY REGISTERED LAND SURVEYOR UNDER THE LAWS OF THE STATE OF IOWA.

John M. Tranmer
JOHN M. TRANMER REG. NO. 12631

DATE: 4-9-98
MY REGISTRATION EXPIRES DECEMBER 31, 1996

LIST CORNERS TO BE INDEXED

CORNERS	SECTION	TWP	RANGE
EAST QUARTER COR.	15	T86N	R1E



Iowa, Illinois, Wisconsin

ENGINEERS AND
SURVEYORS P.C.

4155 Pennsylvania Ave.
Dubuque, Ia. 52002
(319) 556-2464

Guttenberg, IA
Goleno, IL
Cuba City, WI

MONUMENT RECORD

COUNTY: JACKSON
TOWNSHIP: BUTLER

DATE: 4-06-98
REVISED:

FIELD
BOOK NO. 344

PROJ.
NO. 97756

INDEX
NO.



Document 09-2012

Book 2 Page 673 Type 15 001 Pages 1

Date 5/26/2009 Time 2:10 PM

Rec Amt \$7.00

ARLENE SCHAUF, RECORDER/REGISTRAR
JACKSON COUNTY IOWA

PREPARED BY: MICHAEL J. WEBER, WEBER SURVEYING, LLC, 26789 46TH AVE, BERNARD, IA 52032 (563) 879-4173

UNITED STATES PUBLIC LAND SURVEY CORNER CERTIFICATE
OFLAND SURVEY MONUMENTS SITUATED IN SECTION 15, TOWNSHIP 86 NORTH, RANGE 1 EAST
OF THE FIFTH PRINCIPAL MERIDIAN, JACKSON COUNTY, IOWA.PREVIOUSLY RECORDED NONE UNLESS OTHERWISE NOTED

(book, page, document number, etc.)

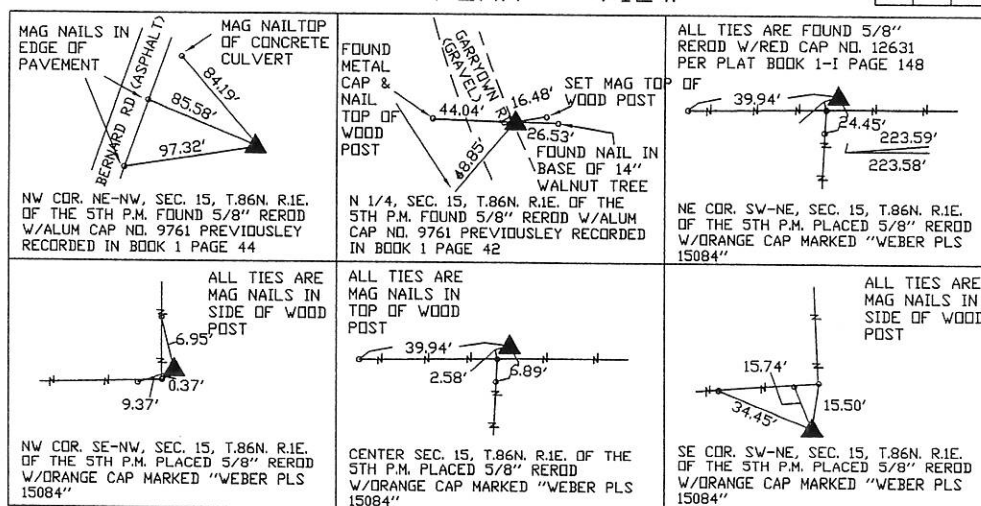
(Show reason for preparing this certificate, the evidence and detailed procedures used in establishing the corner positions and nonumentation found or placed.)

Monument Description and Remarks:

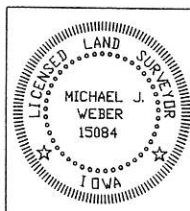
-NW COR. NE-NW, SEC. 15, T.86N. R.1E. OF THE 5TH P.M. FOUND 5/8" REROD W/ALUM CAP NO. 9761
PREVIOUSLEY RECORDED IN BOOK 1 PAGE 44
-NW COR. SE-NW, SEC. 15, T.86N. R.1E. OF THE 5TH P.M. PLACED 5/8" REROD W/ORANGE CAP MARKED
"WEBER PLS 15084" ESTABLISHED CORNER AT THE CENTER OF THE NW 1/4 OF SECTION 15
-N 1/4, SEC. 15, T.86N. R.1E. OF THE 5TH P.M. FOUND 5/8" REROD W/ALUM CAP NO. 9761
PREVIOUSLEY RECORDED IN BOOK 1 PAGE 42
-CENTER SEC. 15, T.86N. R.1E. OF THE 5TH P.M. PLACED 5/8" REROD W/ORANGE CAP MARKED "WEBER
PLS 15084" ESTABLISHED CORNER AT THE INTERSECTION OF THE OCCUPATION FENCELINE RUNNING
EAST & WEST & SOUTH
-NE COR. SW-NE, SEC. 15, T.86N. R.1E. OF THE 5TH P.M. PLACED 5/8" REROD W/ORANGE CAP MARKED
"WEBER PLS 15084" ESTABLISHED CORNER USING PLAT BOOK 1-I PAGE 148
-SE COR. SW-NE, SEC. 15, T.86N. R.1E. OF THE 5TH P.M. PLACED 5/8" REROD W/ORANGE CAP MARKED
"WEBER PLS 15084", ESTABLISHED CORNER MIDWAY & ONLINE BETWEEN THE CENTER AND E 1/4 OF
SECTION 15.

(Show a minimum of three reference ties to durable physical objects,
relevant monuments and physical conditions that will enable recovery of the corner.)

PLAN - VIEW



DWG. NO. DEACON-B-C



I HEREBY CERTIFY THAT THIS LAND SURVEYING DOCUMENT WAS
PREPARED AND THE RELATED SURVEY WORK WAS PERFORMED BY ME OR
UNDER MY DIRECT PERSONAL SUPERVISION AND THAT I AM A DULY
LICENSED LAND SURVEYOR UNDER THE LAWS OF THE STATE OF IOWA.

Michael J. Weber May 12, 2009
MICHAEL J. WEBER (DATE)

LICENSE NUMBER 15084

MY LICENSE RENEWAL DATE IS DECEMBER 31, 2009

SHEETS COVERED BY THIS SEAL: THIS SHEET

List Corners to be Indexed			
Corner	Sec	Twp	Range
NW Cor NE-NW	15	86N	1E
NW Cor. SE-NW	15	86N	1E
N 1/4 COR.	15	86N	1E
CENTER	15	86N	1E
NE Cor. SW-NE	15	86N	1E
SE Cor. SW-NE	15	86N	1E

Book 2 Page 673