



Document 08-1774

Book 2 Page 619 Type 15 001 Pages 1

Date 5/08/2008 Time 10:11 AM

Rec Amt \$7.00

ARLENE SCHAUF, RECORDER/REGISTRAR
JACKSON COUNTY IOWA

Prepared by Wm. Burger LandSurveyors

510 3rd Street West Court, Worthington, Iowa

Phone 563 - 855 2028

UNITED STATES PUBLIC LAND SURVEY CORNER CERTIFICATE

Land Survey Monuments situated in Section 5, Township 85N, Range 1E, of the Fifth Principal Meridian, Jackson County, Iowa. Previously recorded in N/A in the Office of the County Recorder

Monument Description and Remarks: (No Corner Certificates found at the County Recorders Office)

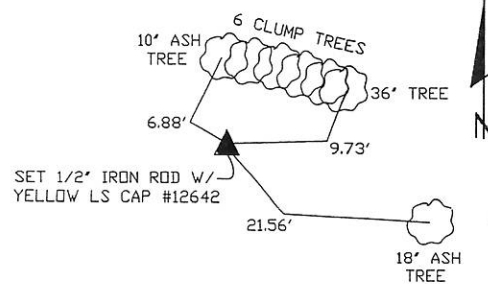
W1/4 CORNER - SET 1/2' IRON ROD W/YELLOW LS CAP #12642 - SET ON LINE BETWEEN THE NW CORNER AND THE SW CORNER AT A PROPORTIONATE DISTANCE

NW CORNER SW1/4 NW1/4 - SET 1/2' IRON ROD W/YELLOW LS CAP #12642 - SET ON LINE BETWEEN THE NW CORNER AND THE W1/4 CORNER AT A PROPORTIONATE DISTANCE

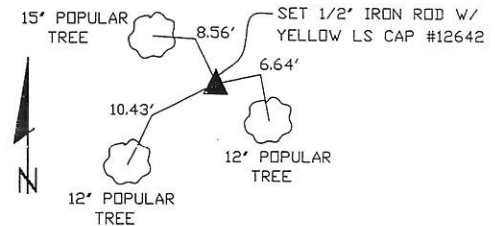
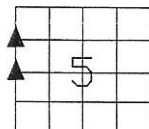
NOTE: METAL DETECTED ALL AREAS BUT NOTHING WAS FOUND; THERE IS NO PREVIOUS RECORD OF ANYTHING BEING SET AT ALL CORNERS

PLAN VIEW

W1/4 CORNER

SET NAIL W/WITNESS CAP
AT ALL TIE POINTS

NW CORNER SW1/4 NW1/4

SET NAIL W/WITNESS CAP
AT ALL TIE POINTS

SEC. 5 TWP. 85N RANGE 1E

CORNERS TO BE INDEXED

W1/4 CORNER 5 85N 1E

NW CORNER SW1/4 NW1/4 5 85N 1E



I hereby certify that this land surveying document was prepared and related survey work was performed by me or under my direct personal supervision and that I am a duly licensed Land Surveyor under the laws of the State of Iowa.

William H. Burger 5/6/08
License number 12642 Date

My license renewal date is December 31, 2008

Pages or Sheets covered by this seal: Sheet 1 of 1

Book 2 Page 619



Document 16-4606

Book 2016 Page 4606 Type 15 001 Pages 1
Date 12/20/2016 Time 9:29 AM
Rec Amt \$7.00

ARLENE SCHAUF, RECORDER/REGISTRAR
JACKSON COUNTY IOWA

PREPARED BY: MICHAEL J. WEBER, WEBER SURVEYING, LLC, 26789 46TH AVE, BERNARD, IA 52032 (563) 879-4173

UNITED STATES PUBLIC LAND SURVEY CORNER CERTIFICATE OF

LAND SURVEY MONUMENTS SITUATED IN SECTION 5, TOWNSHIP 85 NORTH, RANGE 1 EAST
OF THE FIFTH PRINCIPAL MERIDIAN, JACKSON COUNTY, IOWA.
PREVIOUSLY RECORDED NONE UNLESS NOTED BELOW

(book, page, document number, etc.)

(Show reason for preparing this certificate, the evidence and detailed procedures used in establishing the corner positions and monumentation found or placed.)

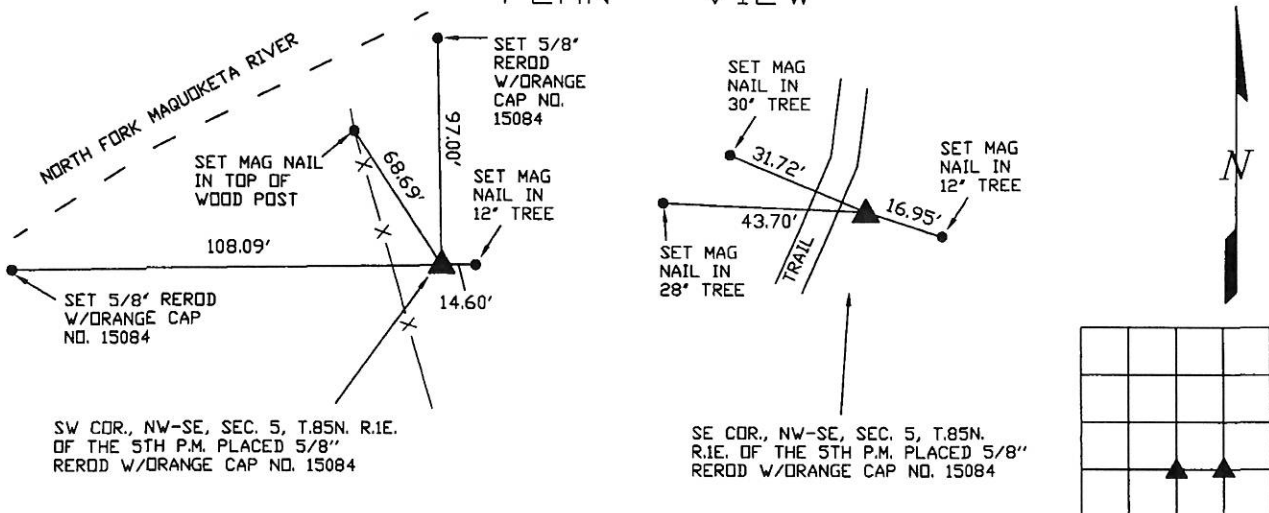
Monument Description and Remarks:

-SE COR. NW-SE, SEC. 5, T.85N. R.1E. OF THE 5TH P.M. PLACED 5/8" REROD W/ORANGE CAP NO. 15084.
ESTABLISHED CORNER BY BREAKING DOWN THE SE 1/4 OF SECTION 5.

-SW COR. NW-SE, SEC. 5, T.85N. R.1E. OF THE 5TH P.M. PLACED 5/8" REROD W/ORANGE CAP NO. 15084.
ESTABLISHED CORNER MIDWAY AND ONLINE BETWEEN THE CALCULATED CENTER AND SOUTH 1/4 CORNER
OF SECTION 5.

(Show a minimum of three reference ties to durable physical objects, relevant monuments and physical conditions that will enable recovery of the corner.)

PLAN - VIEW

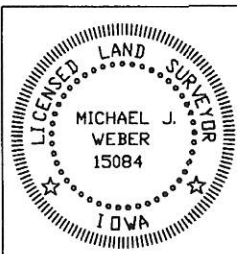


SW COR., NW-SE, SEC. 5, T.85N. R.1E.
OF THE 5TH P.M. PLACED 5/8"
REROD W/ORANGE CAP NO. 15084

SE COR., NW-SE, SEC. 5, T.85N.
R.1E. OF THE 5TH P.M. PLACED 5/8"
REROD W/ORANGE CAP NO. 15084

DRAWING NOT TO SCALE

DWG. NO. 16066



I HEREBY CERTIFY THAT THIS LAND SURVEYING DOCUMENT WAS
PREPARED AND THE RELATED SURVEY WORK WAS PERFORMED BY ME OR
UNDER MY DIRECT PERSONAL SUPERVISION AND THAT I AM A DULY
LICENSED LAND SURVEYOR UNDER THE LAWS OF THE STATE OF IOWA.

Michael J. Weber *December 5, 2016*
MICHAEL J. WEBER (DATE)
LICENSE NUMBER 15084

MY LICENSE RENEWAL DATE IS DECEMBER 31, 2017

SHEETS COVERED BY THIS SEAL: THIS SHEET

| List Corners to be Indexed | | | |
|----------------------------|-----|-----|-------|
| Corner | Sec | Twp | Range |
| SE COR, NW-SE | 5 | 85N | 1E |
| SW COR, NW-SE | 5 | 85N | 1E |