



Document 07-870

Book 2 Page 543 Type 15 001 Pages 1

Date 3/01/2007 Time 3:02 PM

Rec Amt \$7.00

ARLENE SCHAUF, RECORDER
JACKSON COUNTY IOWA

Prepared by Wm. Burger LandSurveyors

510 3rd Street West Court, Worthington, Iowa

Phone 563 - 855 2028

UNITED STATES PUBLIC LAND SURVEY CORNER CERTIFICATE

Land Survey Monuments situated in Section 36, Township 85N, Range 1E, of the Fifth Principal Meridian, Jackson County, Iowa. Previously recorded in N/A in the Office of the County Recorder

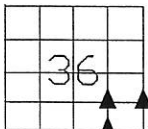
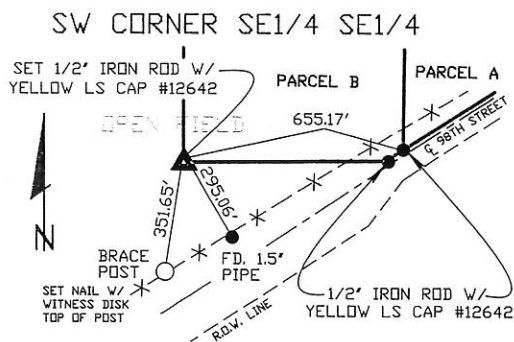
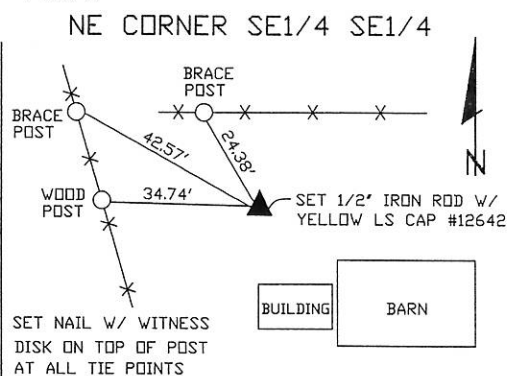
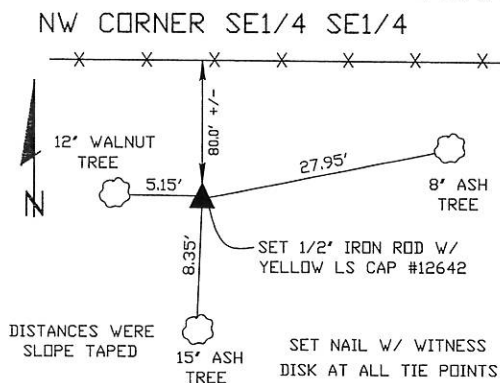
Monument Description and Remarks: (No Corner Certificates found at the County Recorders Office)

NW CORNER SE1/4 SE1/4 - SET 1/2" IRON ROD W/ YELLOW LS CAP #12642 - RUN STRAIGHT LINES FROM OPPOSITE 1/4 1/4 CORNERS AND SET AT THE POINT OF INTERSECTION

NE CORNER SE1/4 SE1/4 - SET 1/2" IRON ROD W/ YELLOW LS CAP #12642 - SET ON LINE AND MIDWAY BETWEEN THE SE CORNER AND A CORNER POST AT THE E1/4 CORNER

SW CORNER SE1/4 SE1/4 - SET 1/2" IRON ROD W/ YELLOW LS CAP #12642 - SET ONLINE AND MIDWAY BETWEEN THE S1/4 CORNER AND THE SE CORNER

PLAN VIEW



SEC. 36 TWP. 85N RANGE 1E

CORNERS TO BE INDEXED

NW CORNER SE1/4 SE1/4	36	85N	1E
NE CORNER SE1/4 SE1/4	36	85N	1E
SW CORNER SE1/4 SE1/4	36	85N	1E



I hereby certify that this land surveying document was prepared and related survey work was performed by me or under my direct personal supervision and that I am a duly licensed Land Surveyor under the laws of the State of Iowa.

William H. Burger 3/12/07
Date

License number 12642

My license renewal date is December 31, 2008

Pages or Sheets covered by this seal Sheet 1 of 1

Book 2 Page 543



Document 11-657

Book 2 Page 761 Type 15 001 Pages 1
Date 2/16/2011 Time 11:00 AM
Rec Amt \$9.00

ARLENE SCHAUF, RECORDER/REGISTRAR
JACKSON COUNTY IOWA

Prepared by: SCHNEIDER Land Surveying and Planning P.O. Box 128 Farley, Iowa 52046 563-744-3631

UNITED STATES PUBLIC LAND SURVEY CORNER CERTIFICATE OF

Land Survey Monuments situated in Section 36, Township 85 North, Range 1 East
of the Fifth Principal Meridian, Jackson County, Iowa.
Previously recorded (NONE OF RECORD)

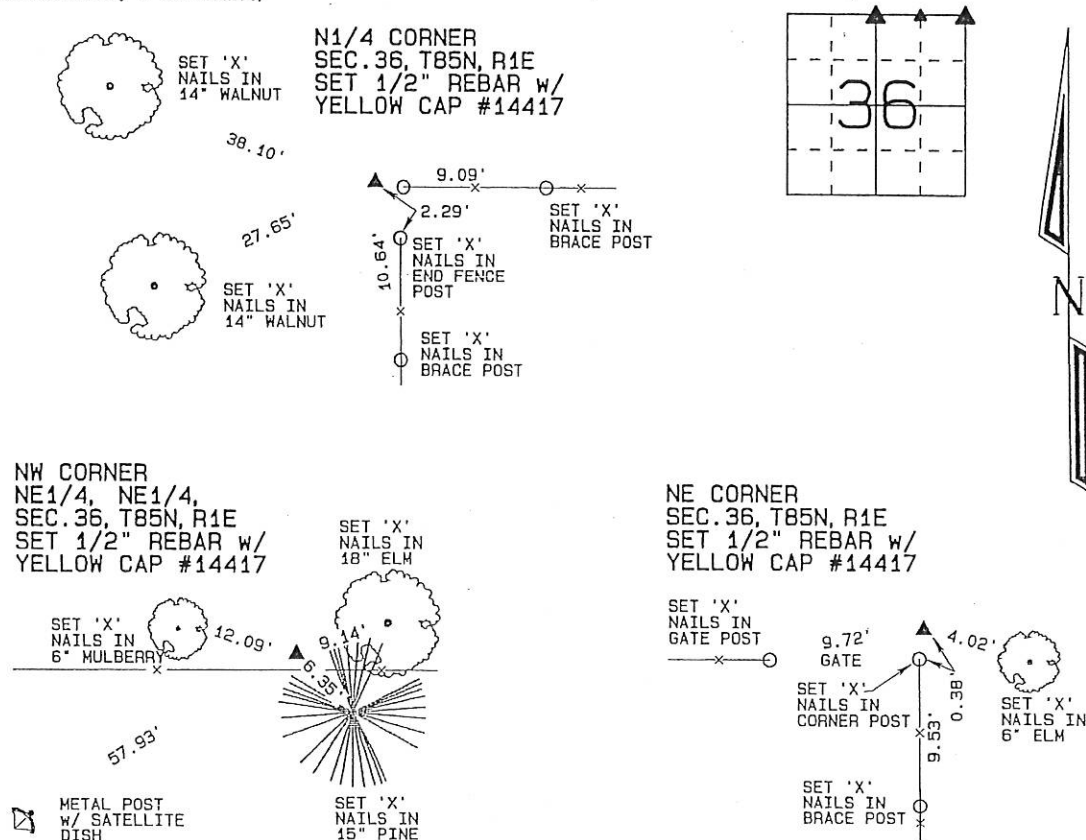
(BOOK, PAGE / INST. NO. / CABINET, SLIDE)

(Show reason for preparing this certificate, the evidence and detailed procedures used in establishing the corner positions and monumentation found or placed.)

Monument Description and Remarks: THE N1/4 CORNER OF SECTION 36, T85N, R1E WAS ESTABLISHED AS FENCED AND OCCUPIED TO THE SOUTH AND EAST OF THE CORNER. THE NW CORNER OF THE NE1/4 OF THE NE1/4 OF SECTION 36, T85N, R1E WAS ESTABLISHED HALF WAY BETWEEN THE N1/4 CORNER AND THE NE CORNER AND IN LINE WITH OCCUPATION FENCES THAT RUN TO THE EAST AND WEST. THE NE CORNER OF SECTION 36, T85N, R1E WAS ESTABLISHED AS FENCED AND OCCUPIED BASED ON FENCES TO THE EAST, WEST AND SOUTH OF THE CORNER.

PLAN - VIEW

(Show a minimum of three reference ties to durable physical objects, relevant monuments and physical conditions that will enable recovery of the corner.)



I hereby certify that this land surveying document was prepared and the related survey work was performed by me or under my direct personal supervision and that I am a duly licensed Land Surveyor under the laws of the State of Iowa.

David P. Schneider P.L.S. #14417

Date: 2/14/2011

My license renewal date is December 31, 2011.

Pages or sheets covered by this seal: THIS SHEET ONLY

SCHNEIDER
Land Surveying & Planning, Inc.

P.O. Box 128 Farley, Iowa 52046
Ph. #563-744-3631 Fax #563-744-3629



List Corners to be Indexed

Corners	Section	Twp	Range
N1/4 CORNER	36	85N	1E
NW CORNER NE1/4, NE1/4	36	85N	1E
NE CORNER	36	85N	1E

Book 2 Page 761

JOB NO. 1458