



Document 06-3152

Book 2 Page 471 Type 15 001 Pages 1

Date 8/14/2006 Time 8:45 AM

Rec Amt \$7.00

ARLENE SCHAUF, RECORDER
JACKSON COUNTY IOWA

Prepared by Vn. Burger LandSurveyors 510 3rd Street West Court, Worthington, Iowa Phone 563 - 855 2028

UNITED STATES PUBLIC LAND SURVEY CORNER CERTIFICATE

Land Survey Monuments situated in Section 35, Township 85N, Range 1E, of the Fifth Principal Meridian, Jackson County, Iowa. Previously recorded in N/A In the Office of the County Recorder

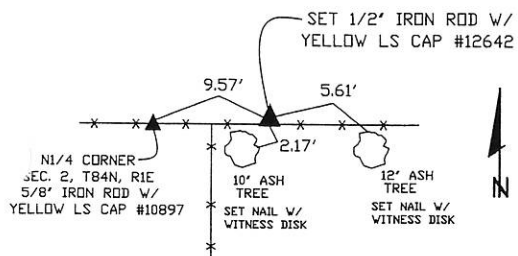
Monument Description and Remarks: No Corner Certificates found at the County Recorders Office

S1/4 CORNER - SET 1/2" IRON ROD W/ YELLOW LS CAP #12642 - SET ON LINE AND
MIDWAY BETWEEN THE SW CORNER AND THE SE CORNER

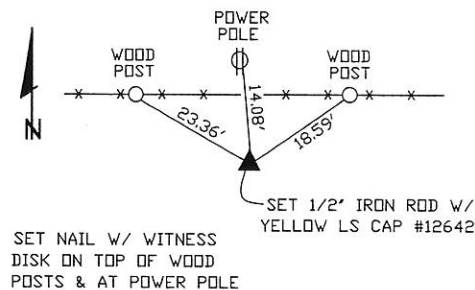
NW CORNER SW1/4 SE1/4 - SET 1/2" IRON ROD W/ YELLOW LS CAP #12642 - SET ON LINE
AND MIDWAY BETWEEN THE CENTER OF SECTION AND THE S1/4 CORNER

PLAN VIEW

S1/4 CORNER



NW CORNER SW1/4 SE1/4



SEC. 35 TWP. 85N RANGE 1E

CORNERS TO BE INDEXED

S1/4 CORNER	35	85N	1E
NW CORNER SW1/4 SE1/4	35	85N	1E



I hereby certify that this land surveying document was prepared and related survey work was performed by me or under my direct personal supervision and that I am a duly licensed Land Surveyor under the laws of the State of Iowa.

William H. Burger 7/20/06
William H. Burger Date

License number 12642

My license renewal date is December 31, 2006

Pages or Sheets covered by this seal Sheet 1 of 1

Book 2 Page 471



Document 13-3258

Book 3 Page 98 Type 15 001 Pages 1
Date 7/31/2013 Time 12:26 PM
Rec Amt \$7.00

ARLENE SCHAUF, RECORDER/REGISTRAR
JACKSON COUNTY IOWA

Prepared by: SCHNEIDER Land Surveying and Planning, Inc. P.O. Box 128 Farley, Iowa 52046 563-744-3631

UNITED STATES PUBLIC LAND SURVEY CORNER CERTIFICATE OF

Land Survey Monuments situated in Section 35, Township 85 North, Range 1 East
of the Fifth Principal Meridian, Jackson County, Iowa.
Previously recorded (NONE OF RECORD)

(BOOK, PAGE / INST. NO. / CABINET, SLIDE)

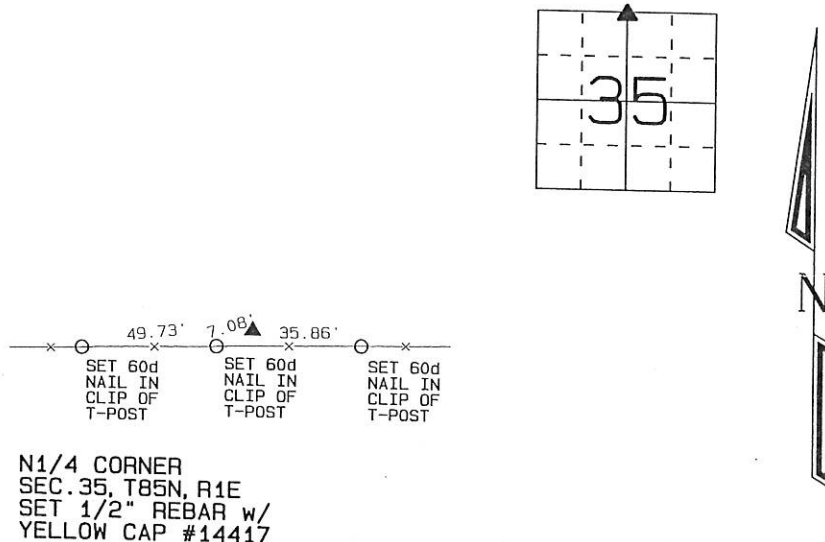
(Show reason for preparing this certificate, the evidence and detailed procedures used in establishing the corner positions and monumentation found or placed.)

Monument Description and Remarks:

THE N1/4 CORNER OF SECTION 35, T85N, R1E WAS ESTABLISHED IN THE EAST-WEST OCCUPATION FENCE AND IN LINE WITH THE WEST LINE OF PARCEL 'A' ILLUSTRATED ON A PLAT OF SURVEY FILED AUGUST 14, 2006 IN BOOK 1-Q, PAGE 92. THE POSITION ALSO WAS IN LINE WITH THE QUARTER-QUARTER LINE FENCE AND THE CENTER OF THE COUNTY ROAD SOUTH OF THE CORNER.

PLAN - VIEW

(Show a minimum of three reference ties to durable physical objects, relevant monuments and physical conditions that will enable recovery of the corner.)



I hereby certify that this land surveying document was prepared and the related survey work was performed by me or under my direct personal supervision and that I am a duly licensed Land Surveyor under the laws of the State of Iowa.

David P. Schneider P.L.S. #14417

Date: 7/30/2013

My license renewal date is December 31, 2013.

For sheets covered by this seal: THIS SHEET ONLY

SCHNEIDER
Land Surveying & Planning, Inc.

P.O. Box 128 Farley, Iowa 52046
Ph. #563-744-3631 Fax #563-744-3629



List Corners to be Indexed

Corners	Section	Twp	Range
N1/4	35	85N	1E

JOB NO. 1729