

UNITED STATES PUBLIC LAND SURVEY CORNER CERTIFICATE

OF

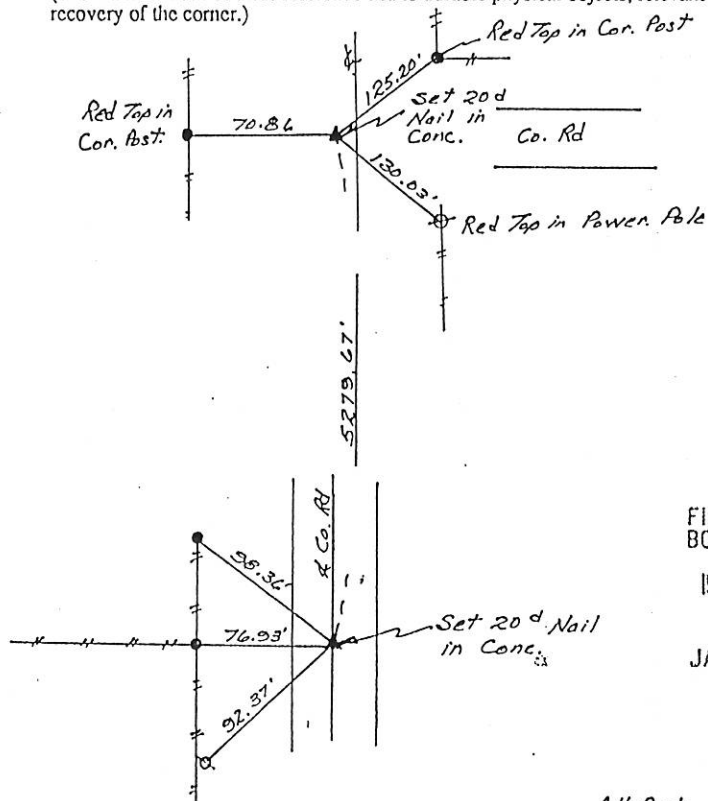
Land Survey Monuments situated in Section 27, Township 85N, Range 1E, of the Fifth Principal Meridian, Jackson County, Iowa.
 Previously recorded in Engineer's Office in County Recorder's Office
 (book, page, document number, etc.)

(Show reason for preparing this certificate, the evidence and detailed procedures used in establishing the corner positions and monumentation found or placed.)

Monument Description and Remarks: The N $\frac{1}{4}$ corner and the S $\frac{1}{4}$ corner of Sec. 27
were set using references obtained in the County Engineer's office
prior to paving. Both corners now have a 20 d nail drilled into the
concrete.

PLAN - VIEW

(Show a minimum of three reference ties to durable physical objects, relevant monuments and physical conditions that will enable recovery of the corner.)



FILE NO. 0536
 BOOK 1 PAGE 57

1991 SEP 3 PM 3:29

SHIRLY RITENOUR
 JACKSON COUNTY, IOWA
 RECORDER

due 5.00

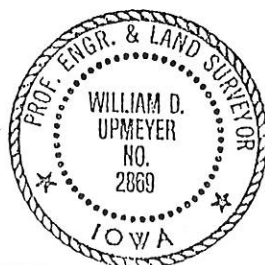
All Distances Planned
Not To Scale

I hereby certify that the survey work was completed and this certificate was prepared by me or under my direct personal supervision and that I am a duly registered land surveyor under the laws of the state of Iowa.

Signature: William D. Upmeyer
 Name typed or printed: William D. Upmeyer

Date: 8-29-91 Reg. No. 2869

SEAL



Corners	Section	Twp	Range
N $\frac{1}{4}$	27	85N	1E
S $\frac{1}{4}$	27	85N	1E

BOOK 1 PAGE 57



Document 11-4226

Book 2 Page 780 Type 15 001 Pages 1
Date 10/28/2011 Time 11:12 AM
Rec Amt \$7.00

ARLENE SCHAUF, RECORDER/REGISTRAR
JACKSON COUNTY IOWA

PREPARED BY: MICHAEL J. WEBER, WEBER SURVEYING, LLC, 26789 46TH AVE, BERNARD, IA 52032 (563) 879-4173

UNITED STATES PUBLIC LAND SURVEY CORNER CERTIFICATE OF

LAND SURVEY MONUMENTS SITUATED IN SECTION 27, TOWNSHIP 85 NORTH, RANGE 1 EAST
OF THE FIFTH PRINCIPAL MERIDIAN, JACKSON COUNTY, IOWA.
PREVIOUSLY RECORDED NONE UNLESS OTHERWISE NOTED BELOW
(book, page, document number, etc.)

(Show reason for preparing this certificate, the evidence and detailed procedures used in establishing the corner positions and monumentation found or placed.)

Monument Description and Remarks:

-W 1/4 COR, SEC. 27, T.85N. R.1E. OF THE 5TH P.M. FOUND A 2" DIA PIPE STAMPED "STATE OF IOWA RLS 8295" PER SEC. COR. CERT., BK 1 PG 88. ESTABLISHED NEW TIES.
-NE COR, SEC. 27, T.85N. R.1E. OF THE 5TH P.M. PLACED A 5/8" DIA STEEL ROD W/ORANGE NO. 15084. ESTABLISHED CORNER AT THE INTERSECTION OF FENCE LINES RUNNING N & S, E & W.
-N 1/4 COR, SEC. 27, T.85N. R.1E. OF THE 5TH P.M. FOUND A 20d NAIL IN CONCRETE PAVEMENT PER SEC. COR. CERT., BK 1 PG 57. ESTABLISHED NEW TIES.
-NW COR, SW-SE, SEC. 27, T.85N. R.1E. OF THE 5TH P.M. PLACED CUT "X" IN CONC. PAVEMENT. ESTABLISHED CORNER MIDWAY BETWEEN THE CENTER AND S 1/4 CORNERS.
-NE COR, SE-SE, SEC. 27, T.85N. R.1E. OF THE 5TH P.M. PLACED A 5/8" DIA STEEL ROD W/ORANGE PLASTIC CAP MARKED "WEBER PLS 15084". ESTABLISHED CORNER 1/4 THE DISTANCE FROM THE SE CORNER TO THE NE CORNER AND ONLINE.

(Show a minimum of three reference ties to durable physical objects, relevant monuments and physical conditions that will enable recovery of the corner.)

PLAN - VIEW

