



Document 05-2194

Book 2, Page 356 Type 06 023 Pages 1

Date 6/06/2005 Time 8:07 AM

Rec Amt \$7.00

PHYLLIS M. GERLACH, RECORDER
JACKSON COUNTY IOWA

Prepared by Wm. Burger Land Surveyors

510 3rd Street West Court, Worthington, Iowa

Phone 563 - 855 2020

UNITED STATES PUBLIC LAND SURVEY CORNER CERTIFICATELand Survey Monuments situated in Section 17, Township 85N, Range 1E, of the Fifth Principal Meridian, Jackson County, Iowa. Previously recorded in N/A in the Office of the County Recorder

Monument Description and Remarks: (No Corner Certificates Found at the County Recorder's Office)

SW CORNER SW1/4 SE1/4 - SET 1/2" IRON ROD W/ YELLOW LS CAP # 12642 - SET ON LINE

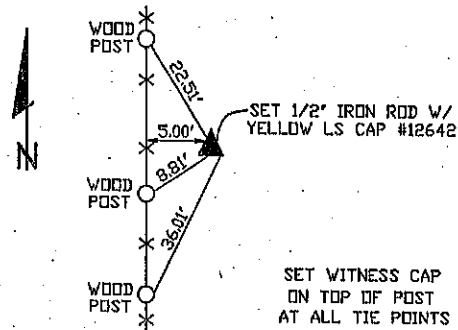
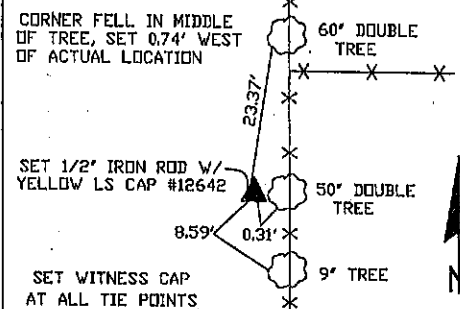
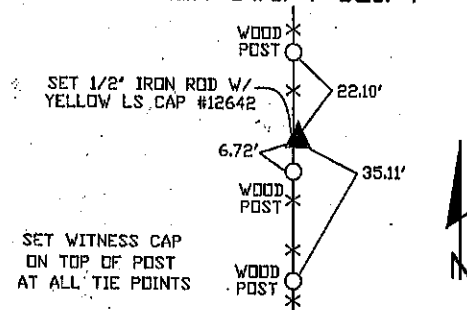
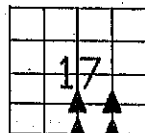
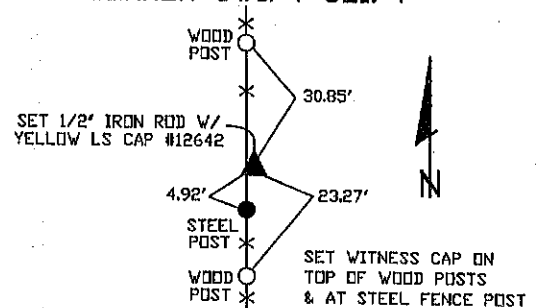
BETWEEN THE SW CORNER AND THE SE CORNER AND ADJUSTED TO EXISTING NORTH-SOUTH FENCELINE

SE CORNER SW1/4 SE1/4 - SET 1/2" IRON ROD W/ YELLOW LS CAP #12642 - SET ON LINE

BETWEEN THE SE1/4 CORNER AND THE SE CORNER AND ADJUSTED TO EXISTING NORTH-SOUTH FENCELINE

NW CORNER SW1/4 SE1/4 - SET 1/2" IRON ROD W/ YELLOW LS CAP #12642 - SET ON LINE AND MIDWAY BETWEEN THE CENTER OF SECTION AND THE SE1/4 CORNER

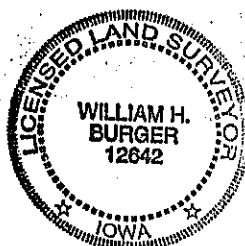
NE CORNER SW1/4 SE1/4 - SET 1/2" IRON ROD W/ YELLOW LS CAP #12642 - RUN STRAIGHT LINES FROM OPPOSITE 1/4 1/4 CORNERS AND SET AT THE POINT OF INTERSECTION

PLAN VIEW**SW CORNER SW1/4 SE1/4****SE CORNER SW1/4 SE1/4****NW CORNER SW1/4 SE1/4****NE CORNER SW1/4 SE1/4**

SEC. 17 TWP. 85N RANGE 1E

CORNERS TO BE INDEXED

SW CORNER SW1/4 SE1/4	17	85N	1E
SE CORNER SW1/4 SE1/4	17	85N	1E
NW CORNER SW1/4 SE1/4	17	85N	1E
NE CORNER SW1/4 SE1/4	17	85N	1E



I hereby certify that this land surveying document was prepared and related survey work was performed by me or under my direct personal supervision and that I am a duly licensed Land Surveyor under the laws of the State of Iowa.

William H. Burger 5/24/05
William H. Burger Date

License number 12642

My license renewal date is December 31, 2006

Pages or Sheets covered by this seal Sheet 1 of 1



Document 05-2195

Book 2 Page 357 Type 06 023 Pages 1
Date 6/06/2005 Time 8:09 AM
Rec Amt \$7.00

PHYLLIS M. GERLACH, RECORDER
JACKSON COUNTY IOWA

Prepared by Wm. Burger Land Surveyors

510 3rd Street West Court, Worthington, Iowa

Phone 563 - 855 2020

UNITED STATES PUBLIC LAND SURVEY CORNER CERTIFICATE

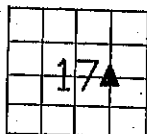
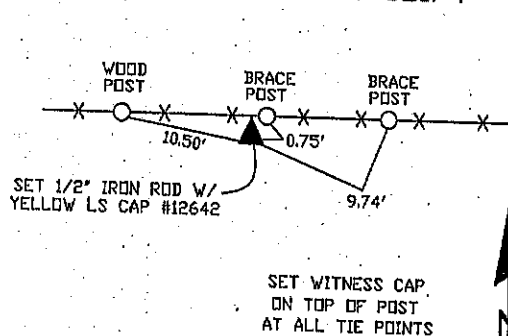
Land Survey Monuments situated in Section 17, Township 85N, Range 1E, of the Fifth Principal Meridian, Jackson County, Iowa. Previously recorded in N/A in the Office of the County Recorder

Monument Description and Remarks: (No Corner Certificates found at the County Recorder's Office)

NE CORNER NW1/4 SE1/4 - SET 1/2" IRON ROD W/ YELLOW LS CAP # 12642 - USED EXISTING FENCELINE EVIDENCE TO THE SOUTH AND EAST TO SET THIS CORNER

PLAN VIEW

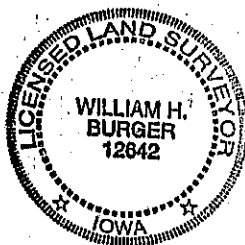
NE CORNER NW1/4 SE1/4



SEC. 17 TWP. 85N RANGE 1E

CORNERS TO BE INDEXED

NE CORNER NW1/4 SE1/4 17 85N 1E



I hereby certify that this land surveying document was prepared and related survey work was performed by me or under my direct personal supervision and that I am a duly licensed Land Surveyor under the laws of the State of Iowa.

William H. Burger 5/24/05
William H. Burger Date

License number 12642

My license renewal date is December 31, 2006

Pages or Sheets covered by this seal: Sheet 1 of 1

Book 2 Page 357



Document 23-2659

Type 15 001 Pages 1
Date 9/26/2023 Time 8:25 AM
Rec Amt \$7.00

ARLENE SCHAUF, RECORDER/REGISTRAR
JACKSON COUNTY IOWA

PREPARED BY: MICHAEL J. WEBER, WEBER SURVEYING, LLC, 26789 46TH AVE, BERNARD, IA 52032 (563) 879-4173

UNITED STATES PUBLIC LAND SURVEY CORNER CERTIFICATE OF

LAND SURVEY MONUMENTS SITUATED IN SECTION 17, TOWNSHIP 85 NORTH, RANGE 1 EAST
OF THE FIFTH PRINCIPAL MERIDIAN, JACKSON COUNTY, IOWA.
PREVIOUSLY RECORDED NONE UNLESS NOTED BELOW

(Book, page, document number, etc)

(Show reason for preparing this certificate, the evidence and detailed procedures used in establishing the corner positions and monumentation found or placed.)

Monument Description and Remarks:

-NE CORNER, SEC. 17, T85N R1E OF THE 5TH P.M. PLACED 5/8" REROD W/ORANGE CAP NO. 15084.
ESTABLISHED CORNER USING PLAT OF PARCEL 98-2021. PREVIOUS MONUMENT AND TIES WERE REMOVED
DUE TO NEW FENCE INSTALLED.
-EAST 1/4 CORNER, SEC. 17, T85N R1E OF THE 5TH P.M. PLACED 5/8" REROD W/ORANGE CAP NO.
15084. ESTABLISHED CORNER USING PLAT OF PARCEL 98-2021. PREVIOUS MONUMENT AND TIES WERE
REMOVED DUE TO NEW FENCE INSTALLED.

(Show a minimum of three reference ties to durable physical objects, relevant monuments and physical conditions that will enable recovery of the corner.)

EAST 1/4
COR., SEC. 17,
T85N R1E OF
THE 5TH P.M.
PLACED 5/8"
DIA. REROD
W/ORANGE
CAP NO. 15084

NE CORNER
OF CONCRETE
FOOTING FOR
NIMS GRAVE
MARKER

SET MAG NAIL
IN TOP OF
WOOD POST

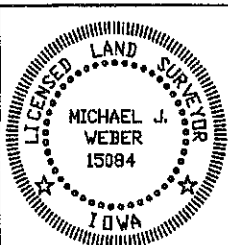
PLAN - VIEW

NE COR., SEC. 17, T85N R1E
OF THE 5TH P.M. PLACED
5/8" DIA. REROD W/ORANGE
CAP NO. 15084

ALL TIES ARE
SET MAG NAIL
IN TOP OF
WOOD POST

DRAWING NOT TO SCALE

DWG. NO. 23076



I HEREBY CERTIFY THAT THIS LAND SURVEYING DOCUMENT WAS
PREPARED AND THE RELATED SURVEY WORK WAS PERFORMED BY ME OR
UNDER MY DIRECT PERSONAL SUPERVISION AND THAT I AM A DULY
LICENSED LAND SURVEYOR UNDER THE LAWS OF THE STATE OF IOWA.

Michael J. Weber
MICHAEL J. WEBER

LICENSE NUMBER 15084

MY LICENSE RENEWAL DATE IS DECEMBER 31, 2023

SHEETS COVERED BY THIS SEAL : THIS SHEET

September 25, 2023
(DATE)

List Corners to be Indexed
Corner Sec Twp Range

EAST 1/4 COR. 17 85N 1E

NE COR. 17 85N 1E