



Document 05-1206

Book 2 Page 344 Type 06 23 Pages 1
Date 3/30/2005 Time 10:17 AM
Rec Amt \$7.00

PHYLLIS M. GERLACH, RECORDER
JACKSON COUNTY IOWA

Prepared by: SCHNEIDER Land Surveying and Planning, Inc. P.O. Box 128 Farley, Iowa 52046 563-744-3631

UNITED STATES PUBLIC LAND SURVEY CORNER CERTIFICATE OF

Land Survey Monuments situated in Section 14, Township 85 North, Range 1 East
of the Fifth Principal Meridian, Jackson County, Iowa.

Previously recorded (NONE OF RECORD)

(BOOK, PAGE / INST. NO. / CABINET, SLIDE)

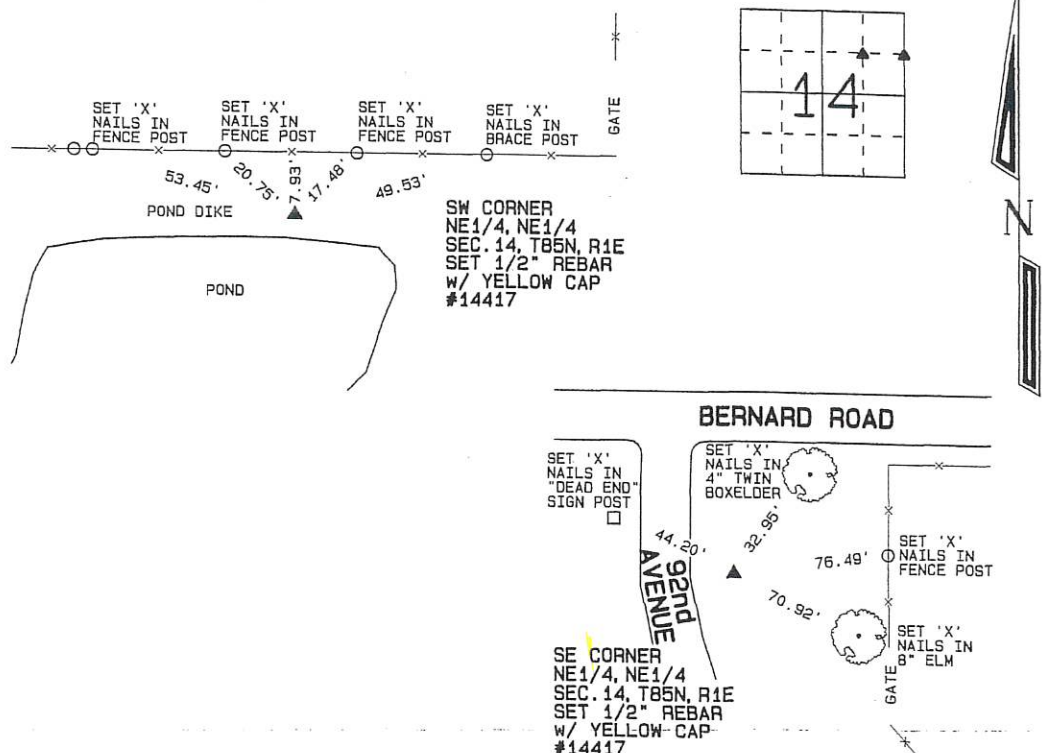
(Show reason for preparing this certificate, the evidence and detailed procedures used in establishing the corner positions and monumentation found or placed.)

Monument Description and Remarks: THE SW CORNER OF THE NE1/4 OF THE NE1/4 OF SECTION 14, T85N, R1E
WAS ESTABLISHED USING MEASUREMENTS ILLUSTRATED ON A PLAT FILED IN BOOK 1-J, PAGE 70.

THE SW CORNER OF THE NE1/4 OF THE NE1/4 OF SECTION 14, T85N, R1E WAS ESTABLISHED USING MEASUREMENTS ILLUSTRATED
ON A PLAT FILED IN BOOK 1-J, PAGE 70.

PLAN - VIEW

(Show a minimum of three reference ties to durable physical objects, relevant monuments and physical conditions that will enable recovery of the corner.)



I hereby certify that this land surveying document was prepared and the related survey work was performed by me or under my direct personal supervision and that I am a duly licensed Land Surveyor under the laws of the State of Iowa.

David P. Schneider P.L.S. #14417

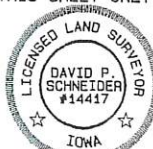
Date: 3/27/2005

My license renewal date is December 31, 2005.

Pages or sheets covered by this seal: THIS SHEET ONLY

SCHNEIDER
Land Surveying & Planning, Inc.

P.O. Box 128 Farley, Iowa 52046
Ph. #563-744-3631 Fax#563-744-3629



List Corners to be Indexed

Corners	Section	Twp	Range
SW CORNER NE1/4, NE1/4	14	T85N	R1E
SE CORNER NE1/4, NE1/4	14	T85N	R1E

JOB NO. 665

Book 2 Page 344



Document 06-164

Book 2 Page 409 Type 06 023 Pages 1
Date 1/13/2006 Time 10:39 AM
Rec Amt \$7.00

PHYLLIS M. GERLACH, RECORDER
JACKSON COUNTY IOWA

Prepared by: SCHNEIDER Land Surveying and Planning, Inc. P.O. Box 128 Farley, Iowa 52046 563-744-3631

UNITED STATES PUBLIC LAND SURVEY CORNER CERTIFICATE OF

Land Survey Monuments situated in Section 14, Township 85 North, Range 1 East
of the Fifth Principal Meridian, Jackson County, Iowa.
Previously recorded IN BOOK 2 AT PAGE 344 AS DOC. NO. 05-1206

(Show reason for preparing this certificate, the evidence and detailed procedures used in establishing the corner positions and monumentation found or placed.)

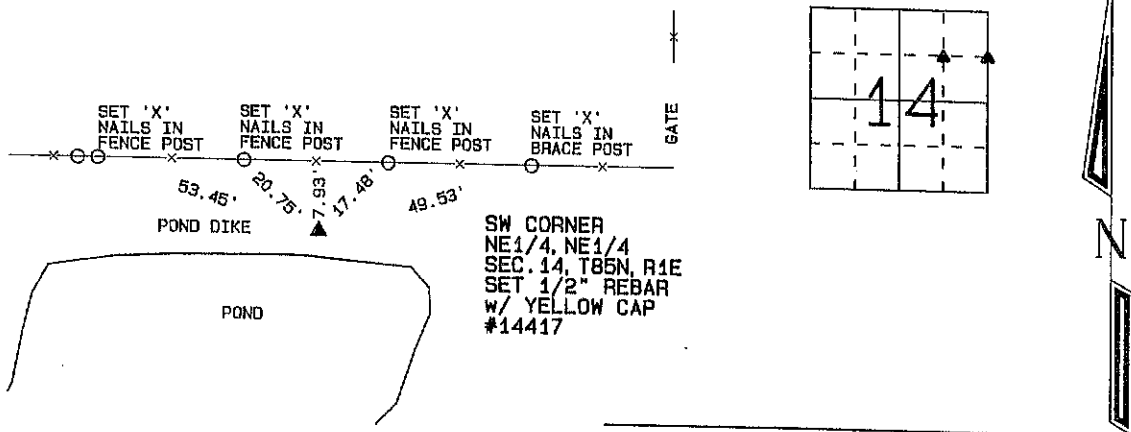
Monument Description and Remarks: THE SW CORNER OF THE NE1/4 OF THE NE1/4 OF SECTION 14, T85N, R1E
WAS ESTABLISHED USING MEASUREMENTS ILLUSTRATED ON A PLAT FILED IN BOOK 1-J, PAGE 70.

THE (SE) CORNER OF THE NE1/4 OF THE NE1/4 OF SECTION 14, T85N, R1E WAS ESTABLISHED USING MEASUREMENTS ILLUSTRATED
ON A PLAT FILED IN BOOK 1-J, PAGE 70.

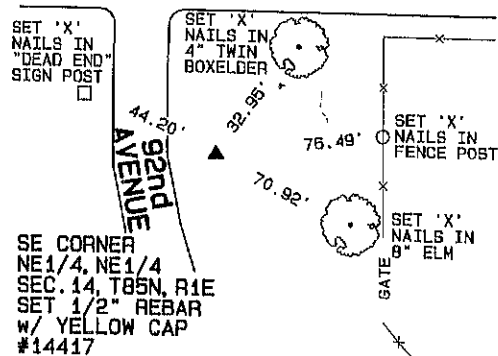
THIS SECTION CORNER CERTIFICATE WAS REFILED TO CORRECT A SCRIVENER'S ERROR IN THE MONUMENT DESCRIPTION
AND REMARKS.

PLAN - VIEW

(Show a minimum of three reference ties to durable physical objects, relevant monuments and physical conditions that will enable recovery of the corner.)



BERNARD ROAD

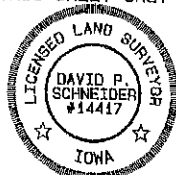


I hereby certify that this land surveying document was prepared and the related survey work was performed by me or under my direct personal supervision and that I am a duly licensed Land Surveyor under the laws of the State of Iowa.

David P. Schneider P.L.S. #14417 Date: 1/12/2006
My license renewal date is December 31, 2007.

Pages or sheets covered by this seal: THIS SHEET ONLY

SCHNEIDER
Land Surveying & Planning, Inc.
P.O. Box 128 Farley, Iowa 52046
Ph. #563-744-3631 Fax #563-744-3629



List Corners to be Indexed

Corners	Section	Twp	Range
SW CORNER NE1/4, NE1/4	14	T85N	R1E
SE CORNER NE1/4, NE1/4	14	T85N	R1E

JOB NO. 665

N.W. COR. 14 85 NORTH 1 EAST
N.E. 1/4
S.W. 1/4