



Document 10-3309

Book 2 Page 725 Type 15 001 Pages 1  
Date 8/18/2010 Time 3:23 PM  
Rec Amt \$9.00

ARLENE SCHAUF, RECORDER/REGISTRAR  
JACKSON COUNTY IOWA

PREPARED BY: MICHAEL J. WEBER, WEBER SURVEYING, LLC, 26789 46TH AVE, BERNARD, IA 52032 (563) 879-4173

## UNITED STATES PUBLIC LAND SURVEY CORNER CERTIFICATE OF

LAND SURVEY MONUMENTS SITUATED IN SECTION 11, TOWNSHIP 85 NORTH, RANGE 1 EAST  
OF THE FIFTH PRINCIPAL MERIDIAN, JACKSON COUNTY, IOWA.  
PREVIOUSLY RECORDED NONE UNLESS NOTED BELOW

(book, page, document number, etc.)

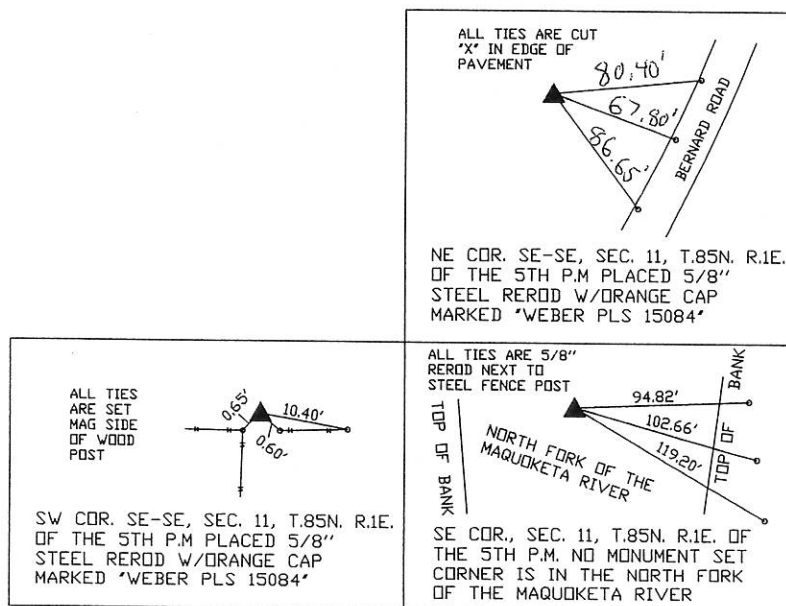
(Show reason for preparing this certificate, the evidence and detailed procedures used in establishing the corner positions and monumentation found or placed.)

### Monument Description and Remarks:

-SW COR. SE-SE, SEC. 11, T.85N. R.1E. OF THE 5TH P.M PLACED 5/8" STEEL REROD W/ORANGE CAP MARKED "WEBER PLS 15084". ESTABLISHED CORNER AT THE EXISTING FENCELINE INTERSECTION.  
-NE COR. SE-SE, SEC. 11, T.85N. R.1E. OF THE 5TH P.M PLACED 5/8" STEEL REROD W/ORANGE CAP MARKED "WEBER PLS 15084". ESTABLISHED CORNER 1/4 OF THE DISTANCE FROM THE SE CORNER TO THE NE CORNER OF SEC. 11 AND IN LINE WITH THE LINE FENCE RUNNING SOUTH  
-SE COR., SEC. 11, T.85N. R.1E. OF THE 5TH P.M NO MONUMENT SET CORNER IS IN THE NORTH FORK OF THE MAQUOKETA RIVER ESTABLISHED CORNER BY EXTENDING THE LINE FENCES FROM THE NORTH AND WEST.

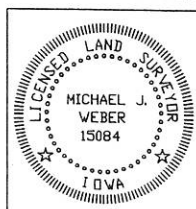
(Show a minimum of three reference ties to durable physical objects, relevant monuments and physical conditions that will enable recovery of the corner.)

### PLAN - VIEW



DRAWING NOT TO SCALE

DWG. NO. TRACY-G



I HEREBY CERTIFY THAT THIS LAND SURVEYING DOCUMENT WAS PREPARED AND THE RELATED SURVEY WORK WAS PERFORMED BY ME OR UNDER MY DIRECT PERSONAL SUPERVISION AND THAT I AM A DULY LICENSED LAND SURVEYOR UNDER THE LAWS OF THE STATE OF IOWA.  
*Michael J. Weber* August 10, 2010  
MICHAEL J. WEBER (DATE)  
LICENSE NUMBER 15084  
MY LICENSE RENEWAL DATE IS DECEMBER 31, 2011  
SHEETS COVERED BY THIS SEAL: THIS SHEET

Corner	Sec	Twp	Range
SW COR. SE-SE	11	85N	1E
NE COR. SE-SE	11	85N	1E
SE CORNER	11	85N	1E