



Document 17-2089

Book 2017 Page 2089 Type 15 001 Pages 1

Date 6/13/2017 Time 9:02 AM

Rec Amt \$7.00

ARLENE SCHAUF, RECORDER/REGISTRAR  
JACKSON COUNTY IOWA

PREPARED BY: MICHAEL J. WEBER, WEBER SURVEYING, LLC, 26789 46TH AVE, BERNARD, IA 52032 (563) 879-4173

# UNITED STATES PUBLIC LAND SURVEY CORNER CERTIFICATE OF

LAND SURVEY MONUMENTS SITUATED IN SECTION 6, TOWNSHIP 86 NORTH, RANGE 4 EAST  
OF THE FIFTH PRINCIPAL MERIDIAN, JACKSON COUNTY, IOWA.

PREVIOUSLY RECORDED NONE

(book, page, document number, etc.)

(Show reason for preparing this certificate, the evidence and detailed procedures used in establishing the corner positions and monumentation found or placed.)

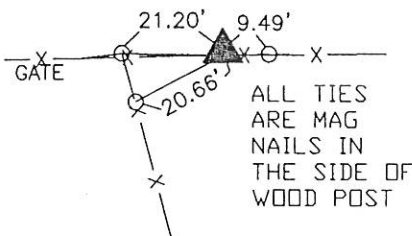
Monument Description and Remarks:

-NW COR., SEC. 6 T.86N. R.4E. OF THE 5TH P.M. FOUND 1-1/2' SQUARE TUBE

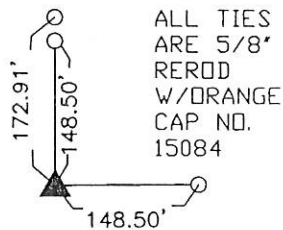
-SW COR., NW-NW, SEC. 6 T.86N. R.4E. OF THE 5TH P.M. PLACED 5/8" REROD W/ORANGE PLASTIC CAP NO. 15084. ESTABLISHED CORNER AT THE INTERSECTION OF A FENCELINE MARKING THE SOUTH LINE OF THE NW-NW WITH THE WEST LINE OF SECTION 6.

(Show a minimum of three reference ties to durable physical objects, relevant monuments and physical conditions that will enable recovery of the corner.)

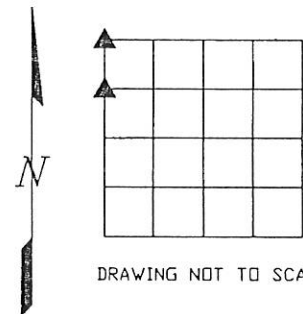
## PLAN - VIEW



NW COR., SEC. 6 T.86N. R.4E.  
OF THE 5TH P.M. FOUND  
1-1/2' SQUARE TUBE

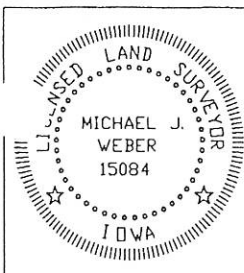


SW COR., NW-NW, SEC. 6 T.86N. R.4E.  
OF THE 5TH P.M. PLACED 5/8" REROD  
W/ORANGE PLASTIC CAP NO. 15084.



DRAWING NOT TO SCALE

DWG. NO. 17018-AMLING



I HEREBY CERTIFY THAT THIS LAND SURVEYING DOCUMENT WAS  
PREPARED AND THE RELATED SURVEY WORK WAS PERFORMED BY ME OR  
UNDER MY DIRECT PERSONAL SUPERVISION AND THAT I AM A DULY  
LICENSED LAND SURVEYOR UNDER THE LAWS OF THE STATE OF IOWA.

*Michael J. Weber* June 9, 2017  
MICHAEL J. WEBER (DATE)

LICENSE NUMBER 15084

MY LICENSE RENEWAL DATE IS DECEMBER 31, 2017

SHEETS COVERED BY THIS SEAL: THIS SHEET

List Corners to be Indexed  
Corner Sec Twp Range

NW COR. 6 86N 4E

SW COR., NW-NW 6 86N 4E