



Document 12-879

Book 3 Page 40 Type 15 001 Pages 1

Date 2/29/2012 Time 3:30 PM

Rec Amt \$7.00

ARLENE SCHAUF, RECORDER/REGISTRAR
JACKSON COUNTY IOWA

Prepared by Wm. Burger LandSurveyor 510 3rd Street West Court, Worthington, Iowa 52078 Phone 563 - 855 2028

UNITED STATES PUBLIC LAND SURVEY CORNER CERTIFICATE

Land Survey Monuments situated in Section 35, Township 86N, Range 4E, of the Fifth Principal Meridian, Jackson County, Iowa. Previously recorded in N/A in the Office of the County Recorder

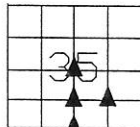
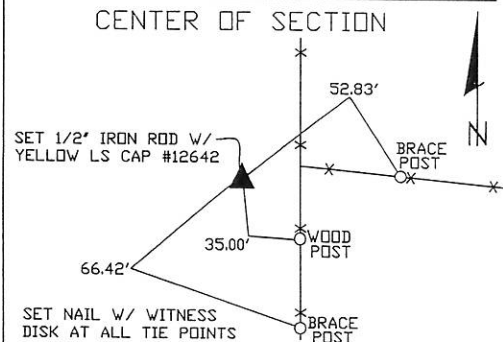
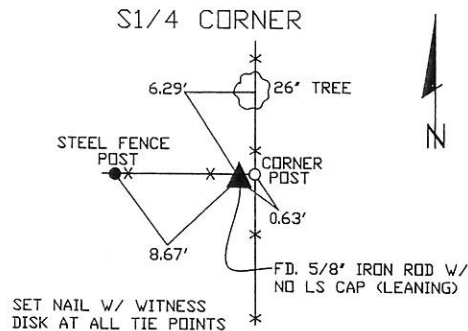
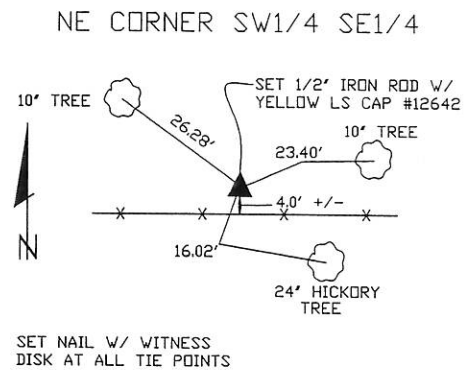
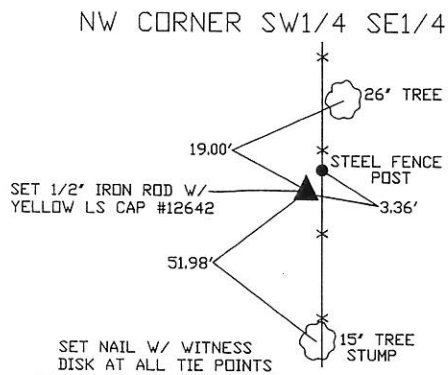
Monument Description and Remarks: (No Corner Certificates found at the County Recorders Office)

NW CORNER SW1/4 SE1/4 - SET 1/2" IRON ROD W/ YELLOW LS CAP #12642 - SET ON LINE AND MIDWAY BETWEEN THE S1/4 CORNER AND THE CENTER OF SECTION

NE CORNER SW1/4 SE1/4 - SET 1/2" IRON ROD W/ YELLOW LS CAP #12642 - RUN STRAIGHT LINES FROM OPPOSITE 1/4 1/4 CORNERS AND SET AT POINT OF INTERSECTION
S1/4 CORNER - FD. 5/8" IRON ROD W/ NO LS CAP (LEANING)

CENTER OF SECTION - SET 1/2" IRON ROD W/ YELLOW LS CAP #12642 - RUN STRAIGHT LINES FROM OPPOSITE 1/4 CORNERS AND SET AT INTERSECTION

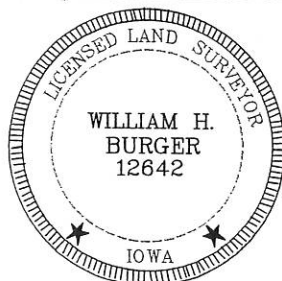
PLAN VIEW



SEC. 35 TWP. 86N RANGE 4E

CORNERS TO BE INDEXED

NW CORNER SW1/4 SE1/4	35	86N	4E
NE CORNER SW1/4 SE1/4	35	86N	4E
S1/4 CORNER	35	86N	4E
CENTER OF SECTION	35	86N	4E



I hereby certify that this land surveying document was prepared and related survey work was performed by me or under my direct personal supervision and that I am a duly licensed Land Surveyor under the laws of the State of Iowa.

William H. Burger 2/29/12
Date

License number 12642

My license renewal date is December 31, 2012

Pages or Sheets covered by this seal: Sheet 1 of 1