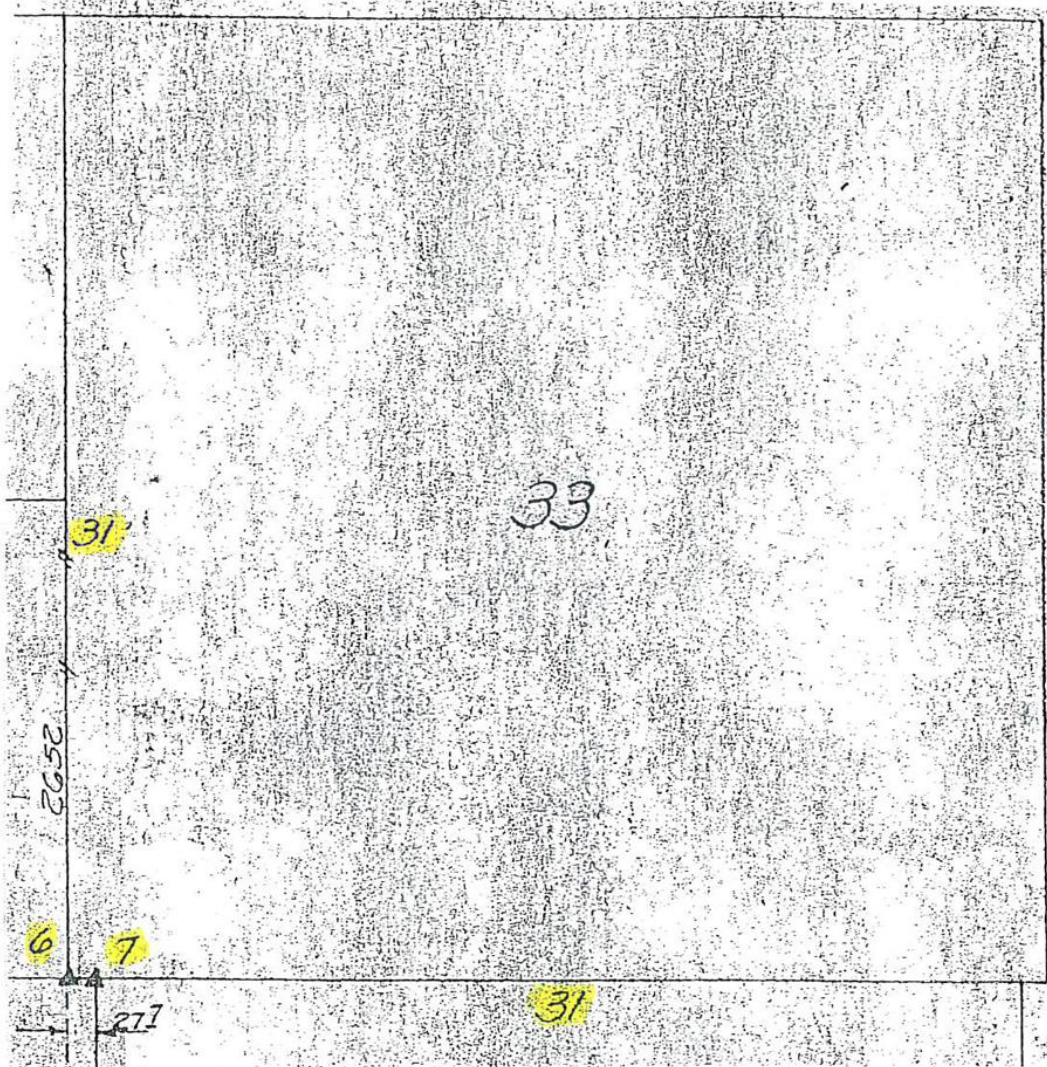


Sec. 33



LAND CORNER SURVEY  
JACKSON COUNTY T85 & 86 N R4E

MADE FOR

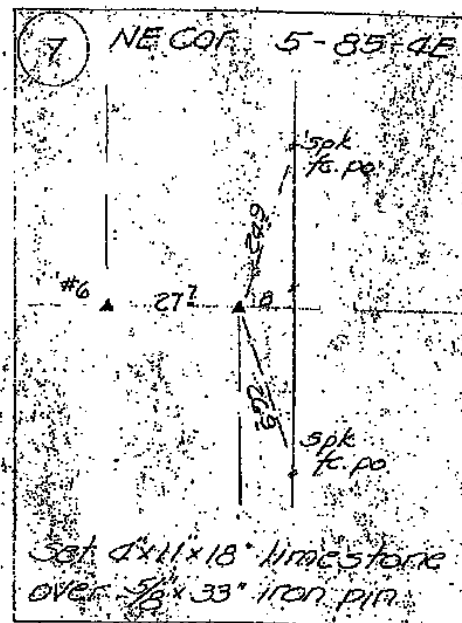
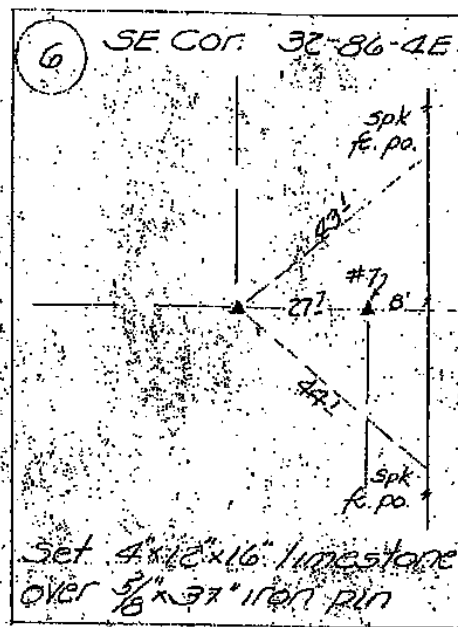
IOWA STATE HIGHWAY COMMISSION

FOR ROW DESCRIPTIONS ON PRIMARY 113 PROJECT FN 830A-1

JUNE-JULY 1941

G.R. ELLIOTT RLS 1941

see field notes filed in Ames office for complete  
information.



31  
Corner searched  
for, but not found,  
and not set.

Sec. 33

LAND  
T-86-N

CORNER

SURVEY

R-4-WE

MADE FOR  
IOWA STATE HIGHWAY COMMISSION FOR THE PURPOSE OF R.O.W  
DESCRIPTIONS ON IOWA PRIMARY ROAD NO. 62 NORTHEAST  
FROM THE TOWN OF ANDREW TO THE TOWN OF BELLEVUE.

MADE BY  
JOHN D. FRANKLIN R.L.S. NO. 2051  
JACKSON COUNTY F-144

JULY THRU SEPT. 1958

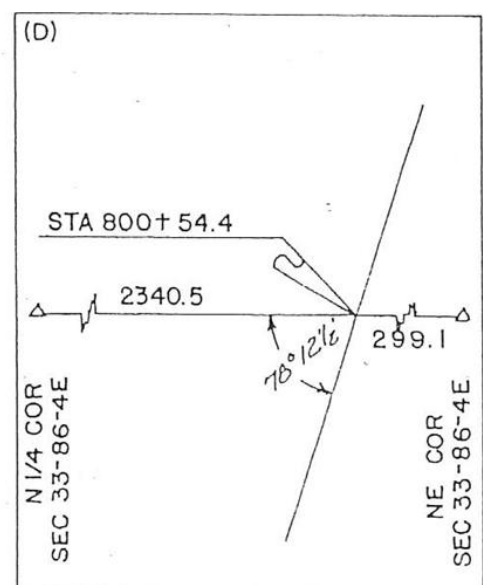
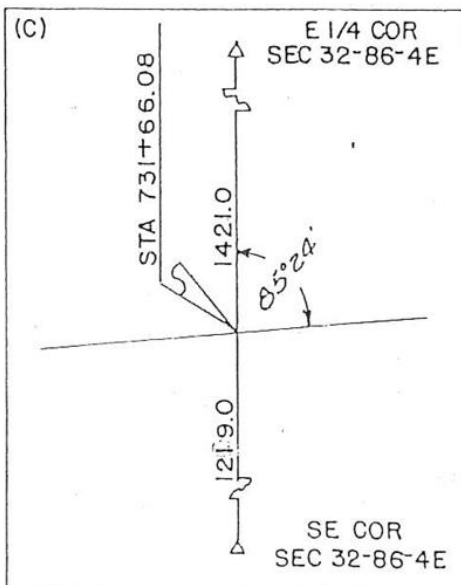
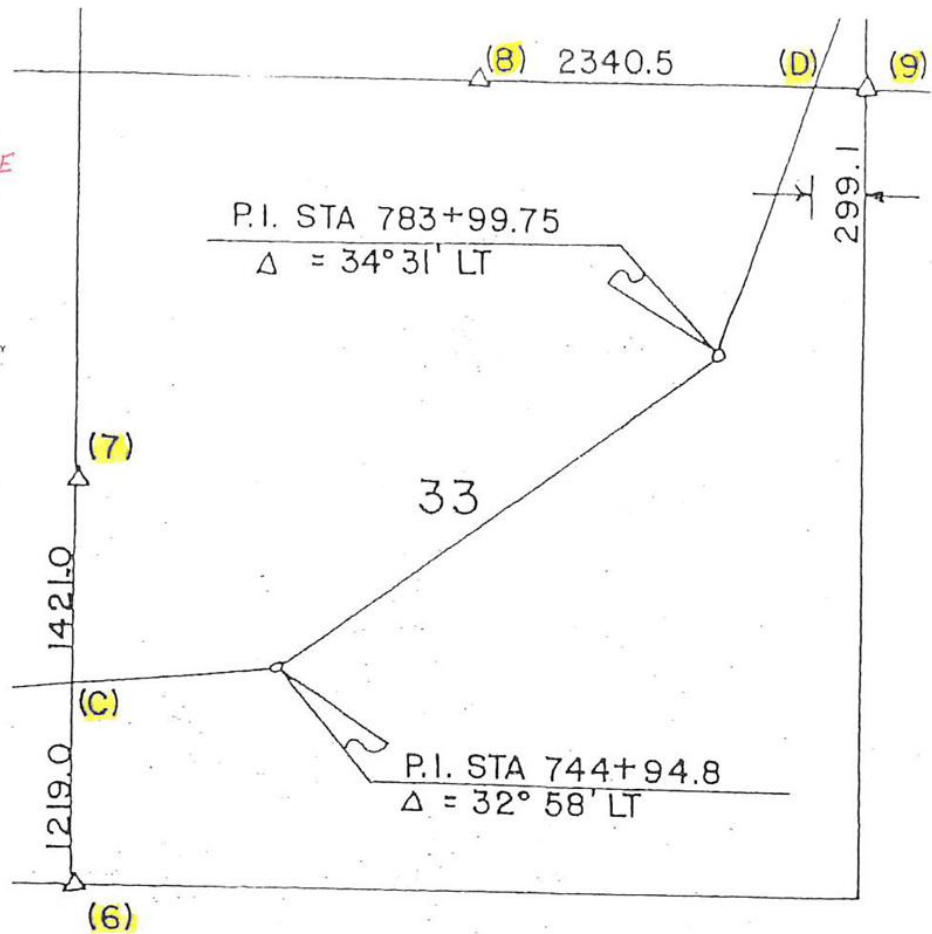
ALL DISTANCES WERE CAREFULLY MEASURED AND MAY NOT AGREE WITH  
ROAD SURVEY STATIONING.  
FOR COMPLETE INFORMATION ON THIS SURVEY, SEE FIELD NOTES ON FILE  
IN AMES OFFICE.

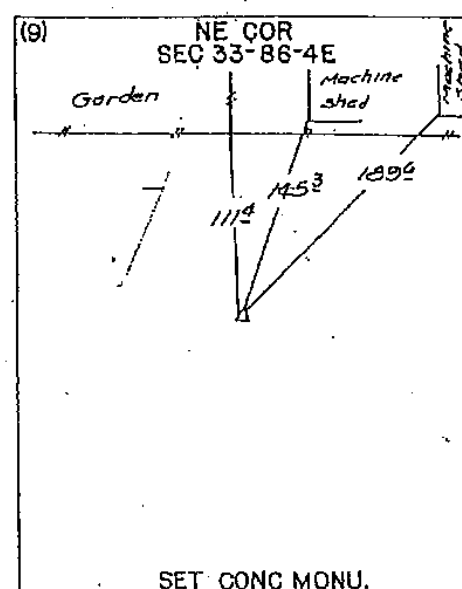
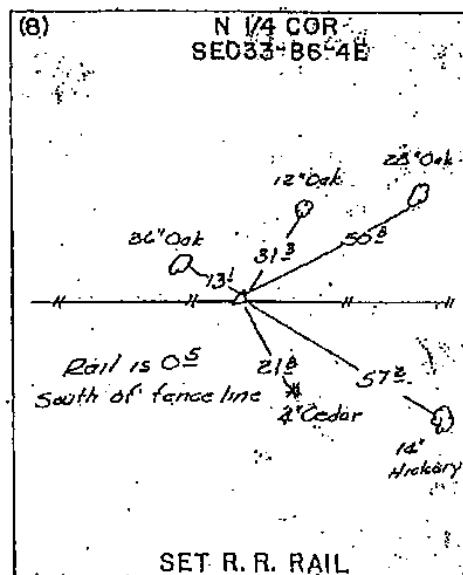
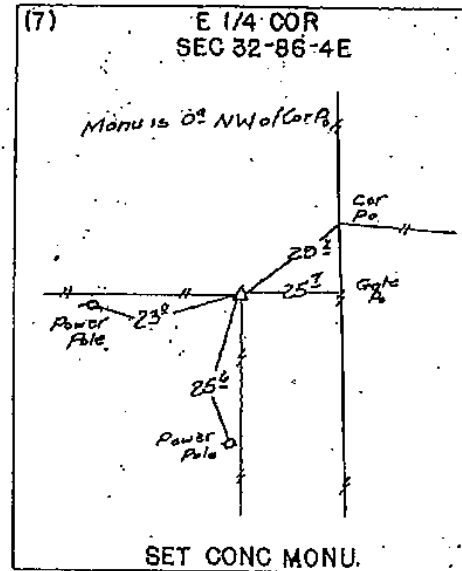
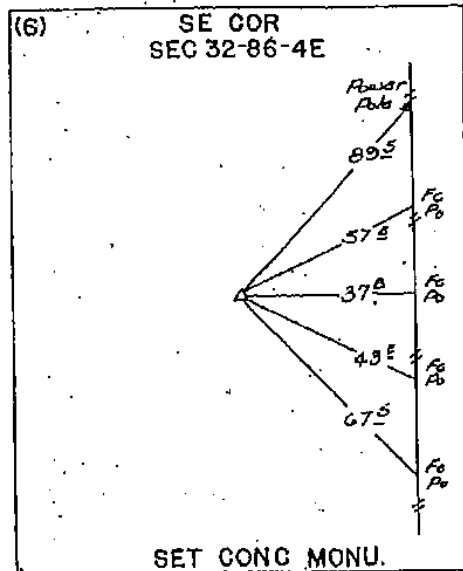
I, HEREBY CERTIFY THAT THIS PLAT IS A TRUE REPRESENTATION OF A SURVEY  
MADE BY ME, ASSISTED BY JAMES O. FRANKLIN, R. F. POPELKA, R. H. JANS, W. M.  
MYERS, L. R. MC GUIRE AND R. P. VAN HORBECK, ALL DULY SWORN, AND IS COR-  
RECT TO THE BEST OF MY KNOWLEDGE.

SIGNED November 21, 1958



*John D. Franklin*  
JOHN D. FRANKLIN R.L.S. NO. 2051



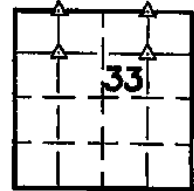


ARLENE SCHAUF, RECORDER/REGISTRAR  
JACKSON COUNTY IOWA

Scott A. Steinfadt LS, Ryken Engineering, 711 Park Avenue, Ackley, Iowa 50801 - Ph. 841-847-3273 - Fax 841-847-2303

# UNITED STATES PUBLIC LAND SURVEY CORNER CERTIFICATE

Land Survey Monuments situated in Section 33, Township 86 North,  
Range 4 East, of the Fifth Principal Meridian, Jackson County, Iowa,  
Previously recorded in Not Applicable in County Recorder's Office

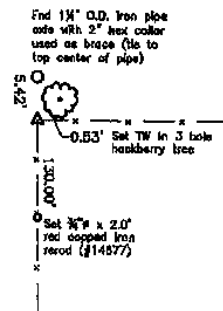


These corners were used for a survey in this section for ??????. Basis of bearing for this corner cert. can be found on the associated plat of survey filed in the Co. Rec's Office for this section.

## Legend

BC = Nail with Bottle Cap	ID = Inside Diameter	R/W = Iron ROW Nail
BP = Brace Post	OD = Outside Diameter	SFP = Steel 'T' Post
CP = Corner Post	PP = Power Pole	SW = Nail with Square Metal Washer
CMP = Corrugated Metal Pipe	PW = Nail with Plastic Washer	TP = Telephone Pedestal
CM = 4" Sq Concrete Monument with	RCP = Reinforced Concrete Pipe	TW = Nail with Round Metal Washer
1/2" iron rod in center (tie to rerod)	RH = Red Head (Nail in wire)	WFP = Wood Fence Post
CX = Cut 'X'	ROW = Right of Way	X = X Nails
GP = Gate Post	RW = Nail with Reflective Round Washer	

## NW Corner NE 1/4 NW 1/4

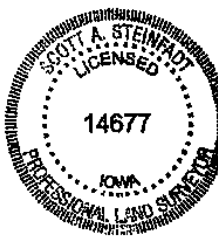


## Monument Description, Remarks, and Plan View:

NW Corner NE 1/4 NW 1/4 - History of Corner =  
Previous and current Co Engr's ties do not indicate that corner is monumented.

Corner Recovery =  
Searched a 10' area around corner post with a magnetic locator and found only the brace axle used a tie. Also probed on all sides of corner post with a tile probe and hit a rock layer at 2.0'± deep. There are no available County records of monumentation of this corner. Therefore, set a 3/4" x 2.0' red capped (#14577) iron rerod, 0.1' exposed to perpetuate monumentation at intersection of fences South and East as this was the best evidence of the 1/4 line's, and used red capped iron rerod as the correct corner. Monument set is in-line with fencelines East and South. All ties are plumb distance.

This certificate is being prepared because there are no certificates on file for this corner.



I hereby certify that this land surveying document was prepared and the related survey work was performed by me or under my direct personal supervision and that I am a duly licensed Land Surveyor under the laws of the State of Iowa.

*Scott A. Steinfadt PLS*

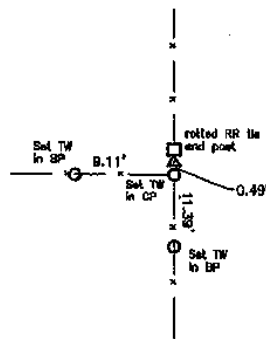
SCOTT A. STEINFADT, LS  
Date: 12/11/2009 License number: 14677  
My license renewal date is December 31, 2010

Pages or sheets covered by this seat: 1, 2

## List Corners to be Indexed

Corners	Section	Twp	Range
NW Cor. NE 1/4 NW 1/4	33	T86N	R4E
SW Cor. NE 1/4 NW 1/4	33	T86N	R4E
NE Cor. NW 1/4 NE 1/4	33	T86N	R4E
SE Cor. NW 1/4 NE 1/4	33	T86N	R4E

## SW Corner NE $\frac{1}{4}$ NW $\frac{1}{4}$



### Monument Description, Remarks, and Plan View:

SW Corner NE $\frac{1}{4}$  NW $\frac{1}{4}$  - History of Corner =

Previous and current Co Engr's ties do not indicate that corner is monumented.

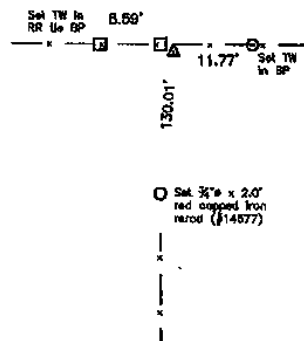
#### Corner Recovery =

Searched a 10' area around corner post with a metal detector and found no magnetic readings. Also probed on all sides of corner post with a tile probe and hit a rock layer at 3.0'± deep. There are no available County records of monumentation of this corner. Therefore, set a  $\frac{3}{4}$ " x 2.0' red capped (#14677) iron rod, 0.1' exposed to perpetuate monumentation at intersection of fences North, South and East as this was the best evidence of the  $\frac{1}{4}$   $\frac{1}{4}$  line's, and used red capped iron rod as the correct corner. Monument set is in-line with fencelines North and South and 1'± North of fenceline West. All ties are plumb distance.

This certificate is being prepared because there are no certificates on file for this corner.

## NE Corner NW $\frac{1}{4}$ NE $\frac{1}{4}$

## SE Corner NW $\frac{1}{4}$ NE $\frac{1}{4}$



### Monument Description, Remarks, and Plan View:

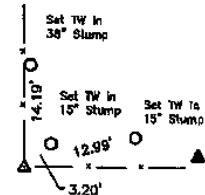
NE Corner NW $\frac{1}{4}$  NE $\frac{1}{4}$  - History of Corner =

Previous and current Co Engr's ties do not indicate that corner is monumented.

#### Corner Recovery =

Searched a 10' area around corner post with a metal detector and found no magnetic readings. Also probed on all sides of corner post with a tile probe and hit nothing to 4.5'± deep. There are no available County records of monumentation of this corner. Therefore, set a  $\frac{3}{4}$ " x 2.0' red capped (#14677) iron rod, 0.1' exposed to perpetuate monumentation at intersection of a fenceline South with a line between the NW $\frac{1}{4}$  Corner and the NE Corner as this was the best evidence of the  $\frac{1}{4}$   $\frac{1}{4}$  line's, and used red capped iron rod as the correct corner. Monument set is in-line with fencelines East, West and South. All ties are plumb distance.

This certificate is being prepared because there are no certificates on file for this corner.



### Monument Description, Remarks, and Plan View:

SE Corner NW $\frac{1}{4}$  NE $\frac{1}{4}$  - History of Corner =

Previous and current Co Engr's ties do not indicate that corner is monumented.

#### Corner Recovery =

Searched a 10' area around rotted off corner post with a metal detector and found no magnetic readings. Also probed on all sides of corner post with a tile probe and hit nothing, except a few scattered field stones, to 4.5'± deep. There are no available County records of monumentation of this corner. Therefore, set a  $\frac{3}{4}$ " x 2.0' red capped (#14677) iron rod, 0.1' exposed to perpetuate monumentation rotted base of corner post, and used red capped iron rod as the correct corner. Monument set is in-line with fencelines North and East. All ties are plumb distance.

This certificate is being prepared because there are no certificates on file for this corner.

### Legend

BC = Nail with Bottle Cap  
BP = Brace Post  
CP = Corner Post  
CMP = Corrugated Metal Pipe  
CM = 4" Sq Concrete Monument with  
1/2" Iron rod in center (tie to rerod)  
CX = Cut 'X'  
GP = Gate Post

ID = Inside Diameter  
OD = Outside Diameter  
FP = Power Pole  
PW = Nail with Plastic Washer  
RCP = Reinforced Concrete Pipe  
RH = Red Head (Nail in wire)  
ROW = Right of Way  
RW = Nail with Reflective Round Washer

R/W = Iron ROW Rail  
SFP = Steel 'T' Post  
SW = Nail with Square Metal Washer  
TP = Telephone Pedestal  
TW = Nail with Round Metal Washer  
WFP = Wood Fence Post  
X = X Marks

