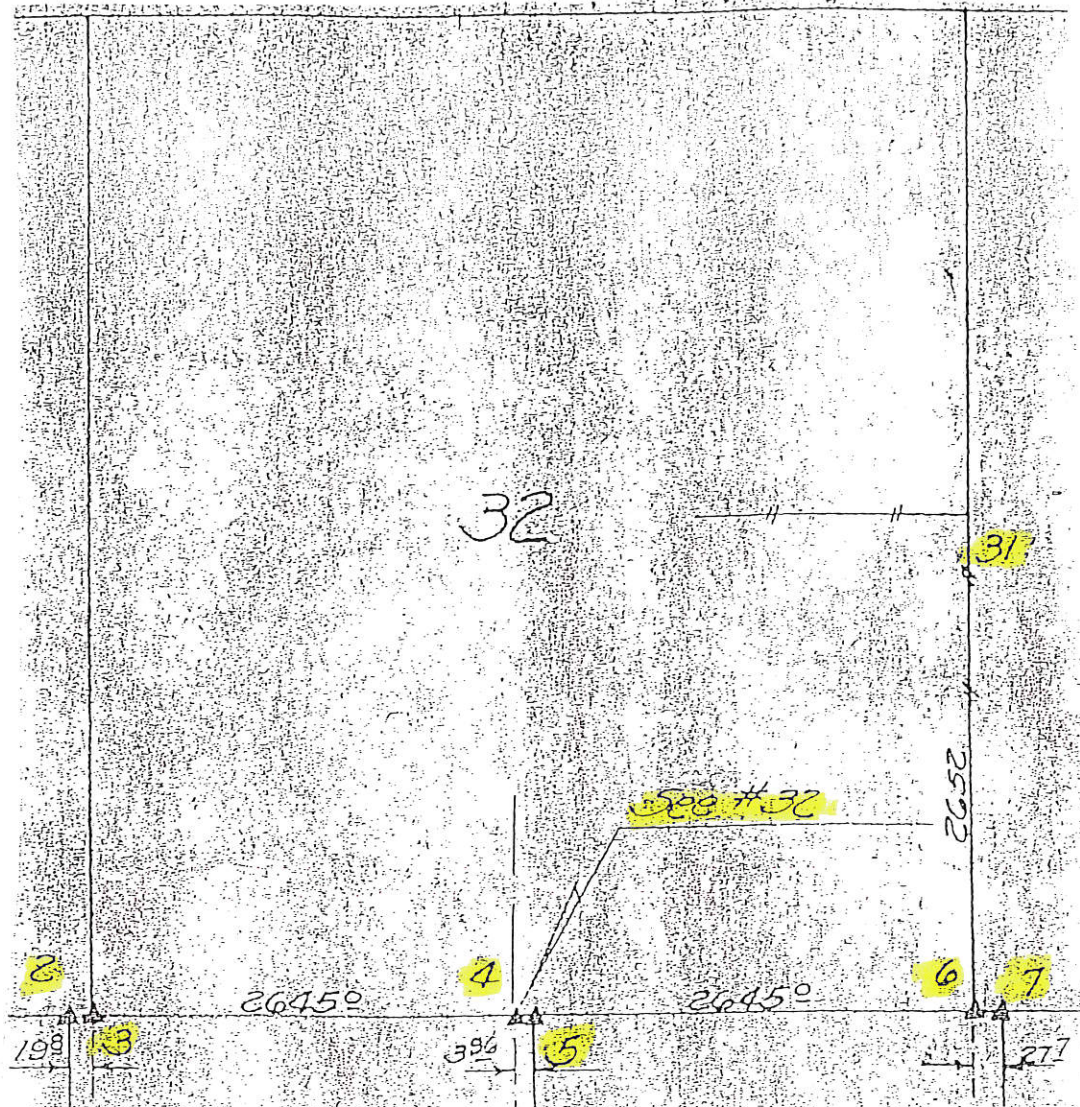


Sec. 32



LAND CORNER SURVEY  
JACKSON COUNTY T85 & 86 N R4E

MADE FOR

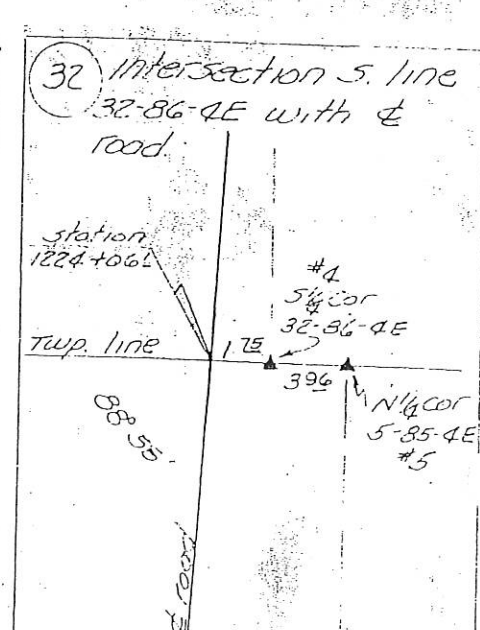
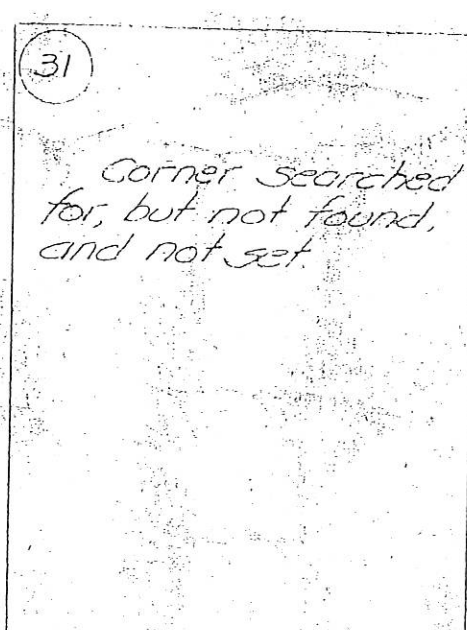
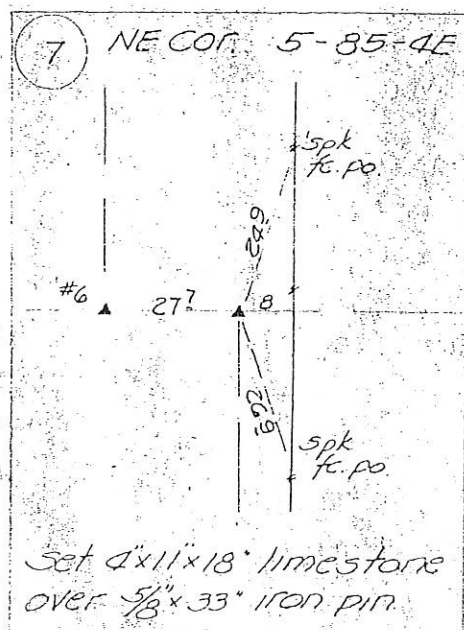
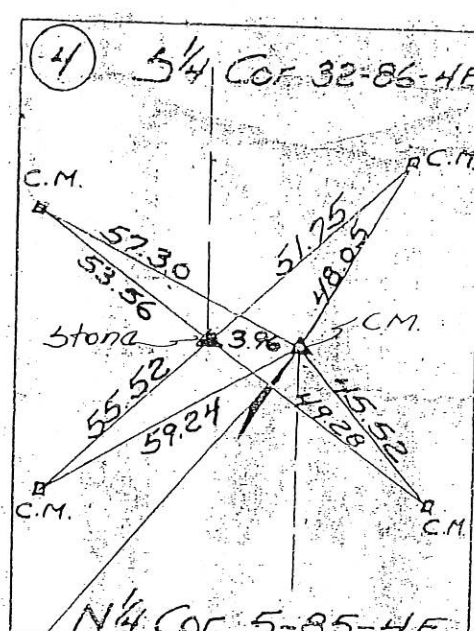
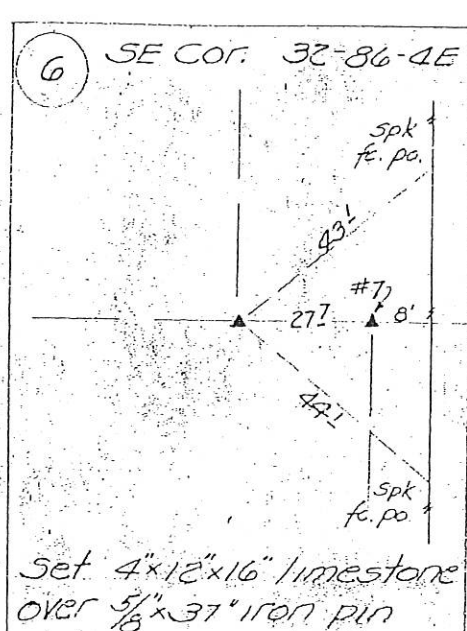
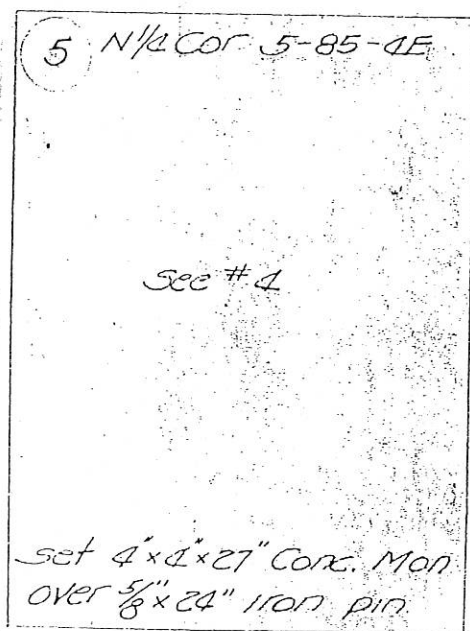
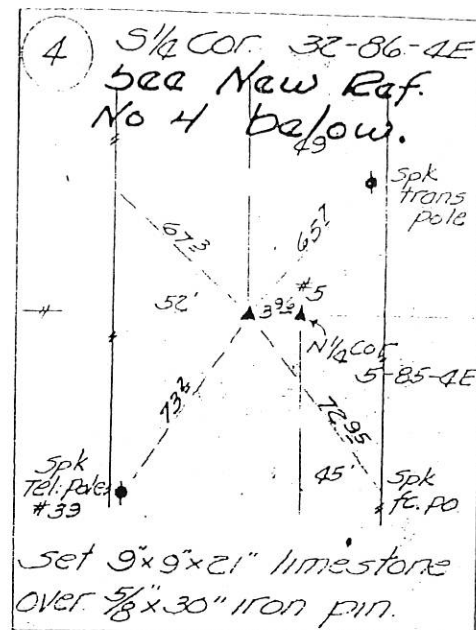
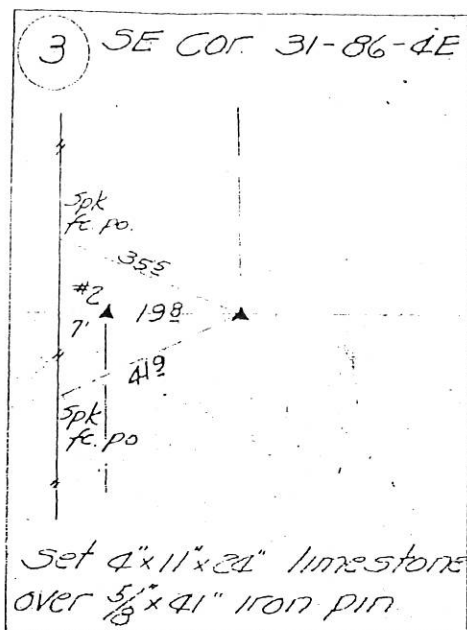
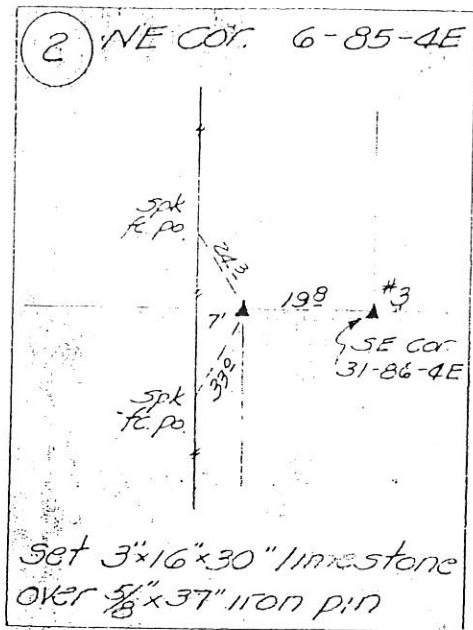
IOWA STATE HIGHWAY COMMISSION

FOR ROW DESCRIPTIONS ON PRIMARY 113 PROJECT FN 830 A-1

JUNE, JULY 1941

G.R. ELLIOTT RLS 1841

see field notes filed in Ames office for complete information.





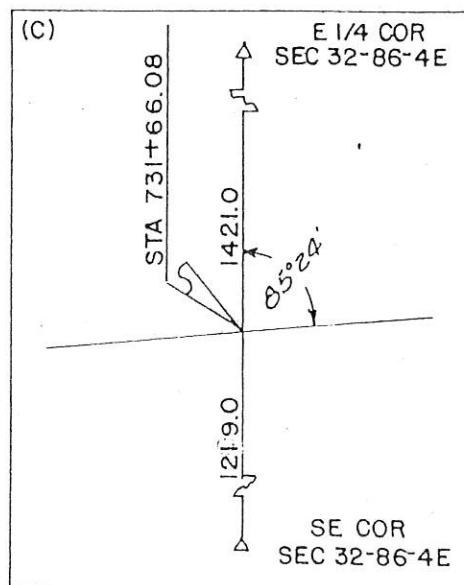
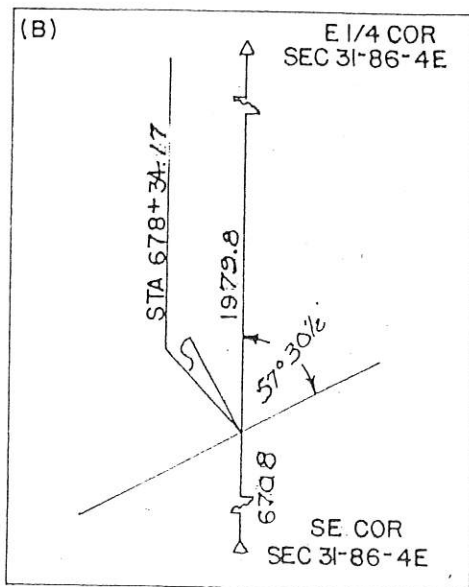
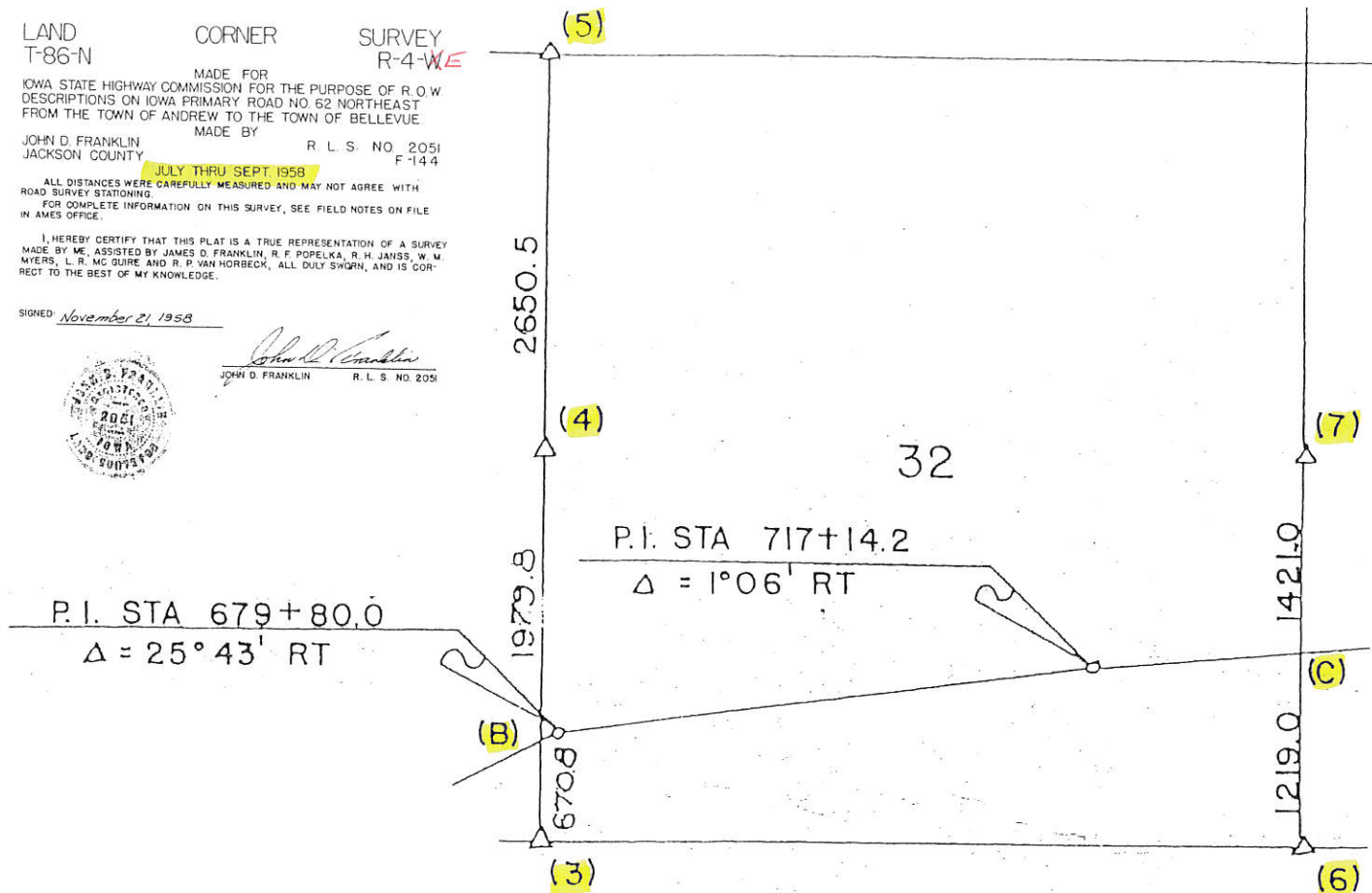
Sec. 32

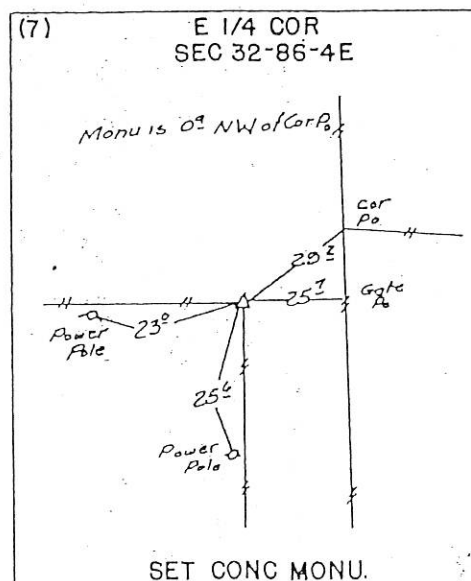
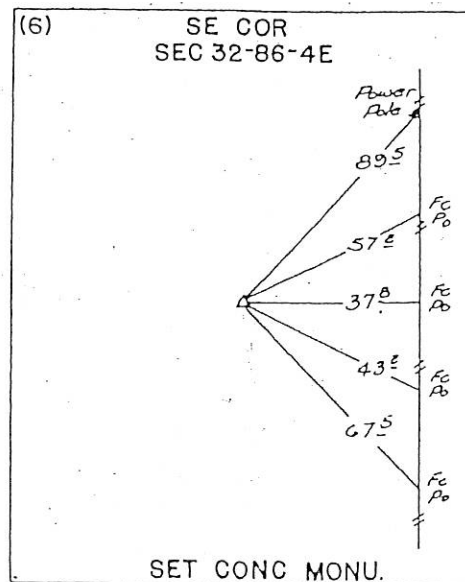
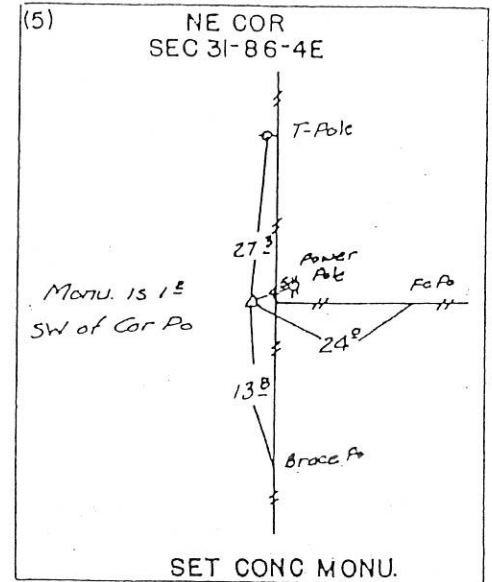
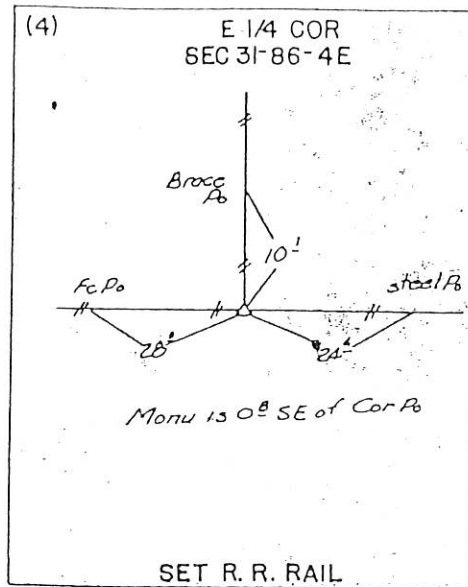
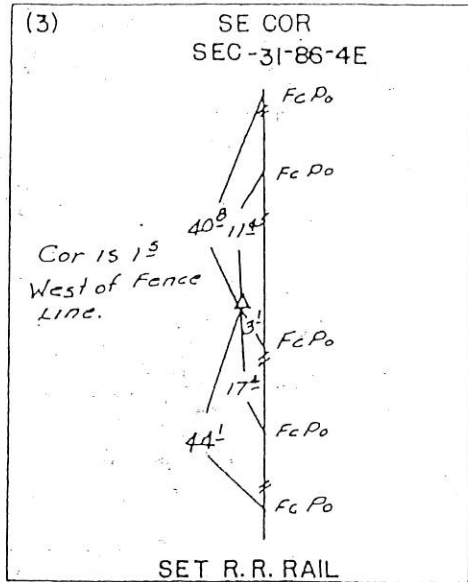
LAND T-86-N CORNER SURVEY R-4-W  
 MADE FOR IOWA STATE HIGHWAY COMMISSION FOR THE PURPOSE OF R.O.W. DESCRIPTIONS ON IOWA PRIMARY ROAD NO. 62 NORTHEAST FROM THE TOWN OF ANDREW TO THE TOWN OF BELLEVUE.  
 MADE BY JOHN D. FRANKLIN R. L. S. NO. 2051 F-144  
 JULY THRU SEPT 1958  
 ALL DISTANCES WERE CAREFULLY MEASURED AND MAY NOT AGREE WITH ROAD SURVEY STATIONING.  
 FOR COMPLETE INFORMATION ON THIS SURVEY, SEE FIELD NOTES ON FILE IN AMES OFFICE.  
 I, HEREBY CERTIFY THAT THIS PLAT IS A TRUE REPRESENTATION OF A SURVEY MADE BY ME, ASSISTED BY JAMES D. FRANKLIN, R. F. POPELKA, R. H. JANSZ, W. M. MYERS, L. R. MC GUIRE AND R. P. VAN HORBECK, ALL DULY SWORN, AND IS CORRECT TO THE BEST OF MY KNOWLEDGE.

SIGNED November 21, 1958



*John D. Franklin*  
 JOHN D. FRANKLIN R. L. S. NO. 2051





# UNITED STATES PUBLIC LAND SURVEY CORNER CERTIFICATE

SLSI 9-90

OF

Land Survey Monuments situated in Section 32, Township 86N, Range 4E, of the Fifth Principal Meridian, JACKSON County, Iowa.  
Previously recorded in \_\_\_\_\_ in County Recorder's Office.  
(book, page, document number, etc.)

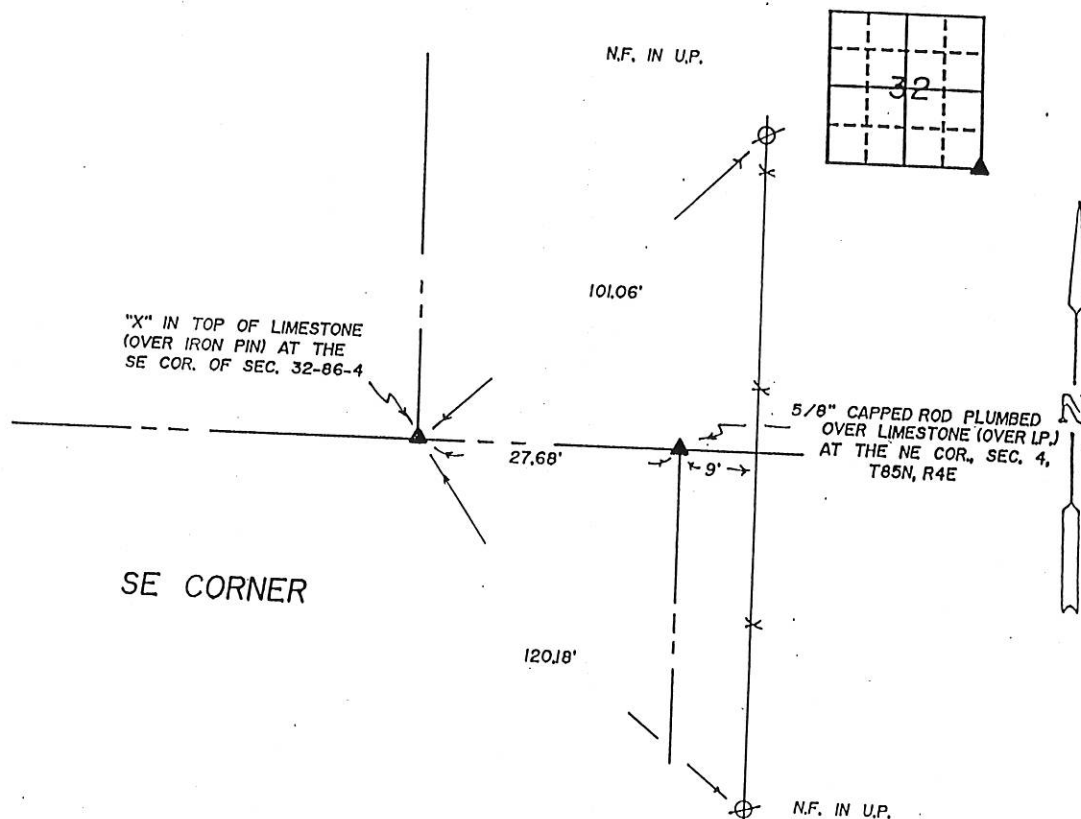
(Show reason for preparing this certificate, the evidence and detailed procedures used in establishing the corner positions and monumentation found or placed.)

Monument Description and Remarks:

SE COR. = "X" IN TOP OF FOUND LIMESTONE OVER IRON PIN

## PLAN - VIEW

(Show a minimum of three reference ties to durable physical objects, relevant monuments and physical conditions that will enable recovery of the corner.)



I hereby certify that the survey work was completed and this certificate was prepared by me or under my direct personal supervision and that I am a duly registered land surveyor under the laws of the state of Iowa.

Signature: LaVerne F. Vander Schaaf  
Name typed or printed: LAVERNE F. VANDER SCHAAF

Date: 4-20-94 Reg. No. 11084

SEAL



Job #3524  
List Corners to be Indexed  
Corners Section Twp Range  
SE COR. 32 86 4

FILE NO 003072  
BOOK 1 PAGE 203

1994 APR 27 AM 10:37

SHIRLY RITENOUR  
JACKSON COUNTY, IOWA



Document 06-1007

Book 2 Page 433 Type 06 023 Pages 1

Date 3/15/2006 Time 1:37 PM

Rec Amt \$7.00

PHYLLIS M. GERLACH, RECORDER  
JACKSON COUNTY IOWA

Prepared by: SCHNEIDER Land Surveying and Planning, Inc. P.O. Box 128 Farley, Iowa 52046 563-744-3631

## UNITED STATES PUBLIC LAND SURVEY CORNER CERTIFICATE OF

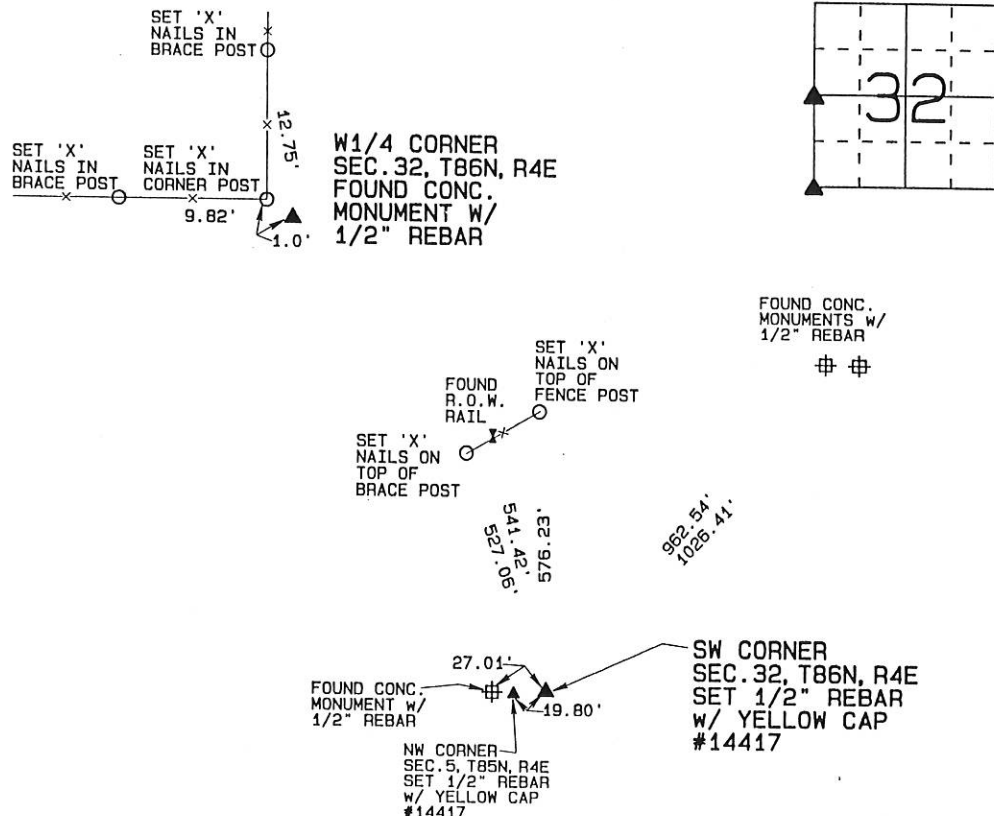
Land Survey Monuments situated in Section 32, Township 86 North, Range 4 East  
of the Fifth Principal Meridian, Jackson County, Iowa.  
Previously recorded (NONE OF RECORD)

(Show reason for preparing this certificate, the evidence and detailed procedures used in establishing the corner positions and monumentation found or placed.)

Monument Description and Remarks: A CONCRETE MONUMENT WITH AN EMBEDDED 1/2" REBAR WAS FOUND AT THE W1/4 CORNER OF SECTION 32, T86N, R4E AS ILLUSTRATED ON I.D.O.T. CORNER TIES FOR PROJECT F-144 DATED IN 1958. A CONC. MONUMENT WITH AN EMBEDDED 1/2" REBAR WAS FOUND NEAR THE SW CORNER OF SECTION 32, T86N, R4E AS ILLUSTRATED ON I.D.O.T. CORNER TIES FOR PROJECT F-144. THE MONUMENT AND TIES DID NOT TAKE INTO ACCOUNT THERE WERE TO BE A DOUBLE SET OF CORNERS ON THE CORRECTION LINE AS INDICATED ON OLDER I.D.O.T. TIES. A 1/2" REBAR W/ YELLOW CAP #14417 WAS SET AS INDICATED ON THE OLDER I.D.O.T. TIES OBTAINED AT THE JACKSON COUNTY ENGINEER'S OFFICE.

### PLAN - VIEW

(Show a minimum of three reference ties to durable physical objects, relevant monuments and physical conditions that will enable recovery of the corner.)



I hereby certify that this land surveying document was prepared and the related survey work was performed by me or under my direct personal supervision and that I am a duly licensed Land Surveyor under the laws of the State of Iowa.

David P. Schneider P.L.S. #14417

Date: 3/14/2006

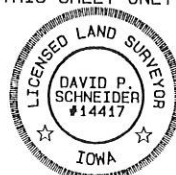
My license renewal date is December 31, 2007.

Pages or sheets covered by this seal: THIS SHEET ONLY

**SCHNEIDER**

Land Surveying & Planning, Inc.

P.O. Box 128 Farley, Iowa 52046  
Ph. #563-744-3631 Fax #563-744-3629



#### List Corners to be Indexed

Corners	Section	Twp	Range
W1/4	32	86N	4E
SW CORNER	32	86N	4E

JOB NO. 856