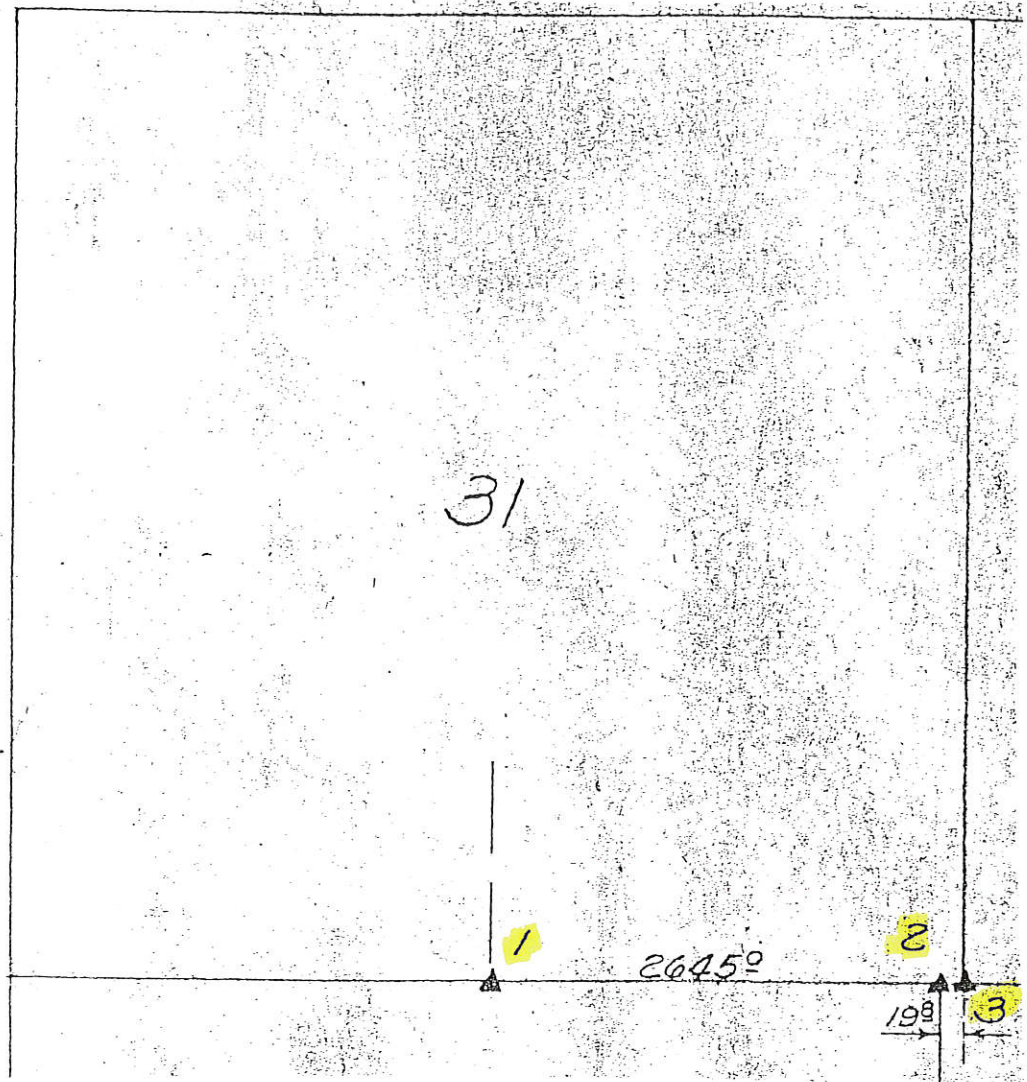


Sec. 31



LAND CORNER SURVEY
JACKSON COUNTY T85 & 86 N R4E

MADE FOR

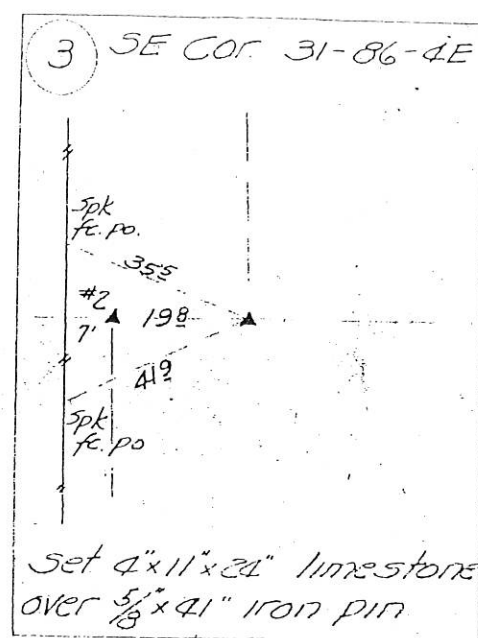
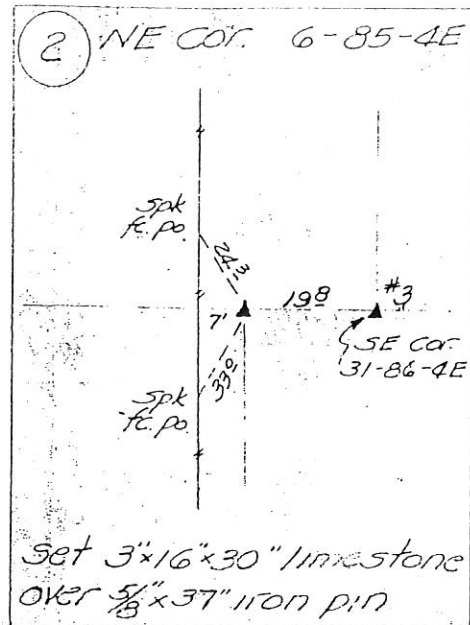
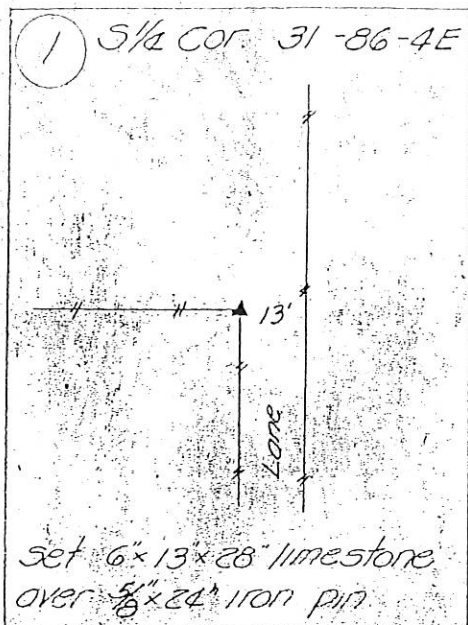
IOWA STATE HIGHWAY COMMISSION

FOR ROW. DESCRIPTIONS ON PRIMARY 113 PROJECT FN 830A-1

JUNE-JULY 1941

G.R ELLIOTT RLS 1841

see field notes filed in Ames office for complete
information.



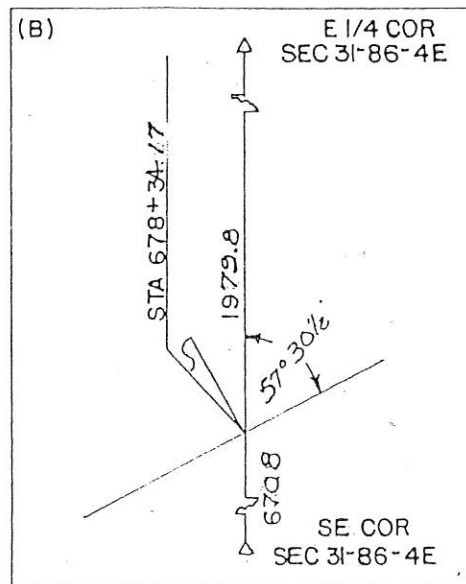
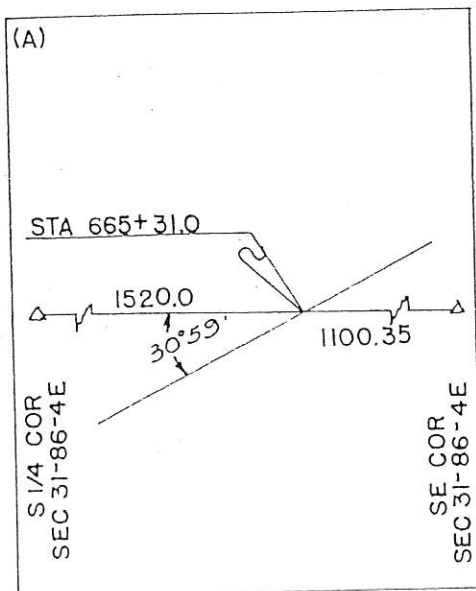
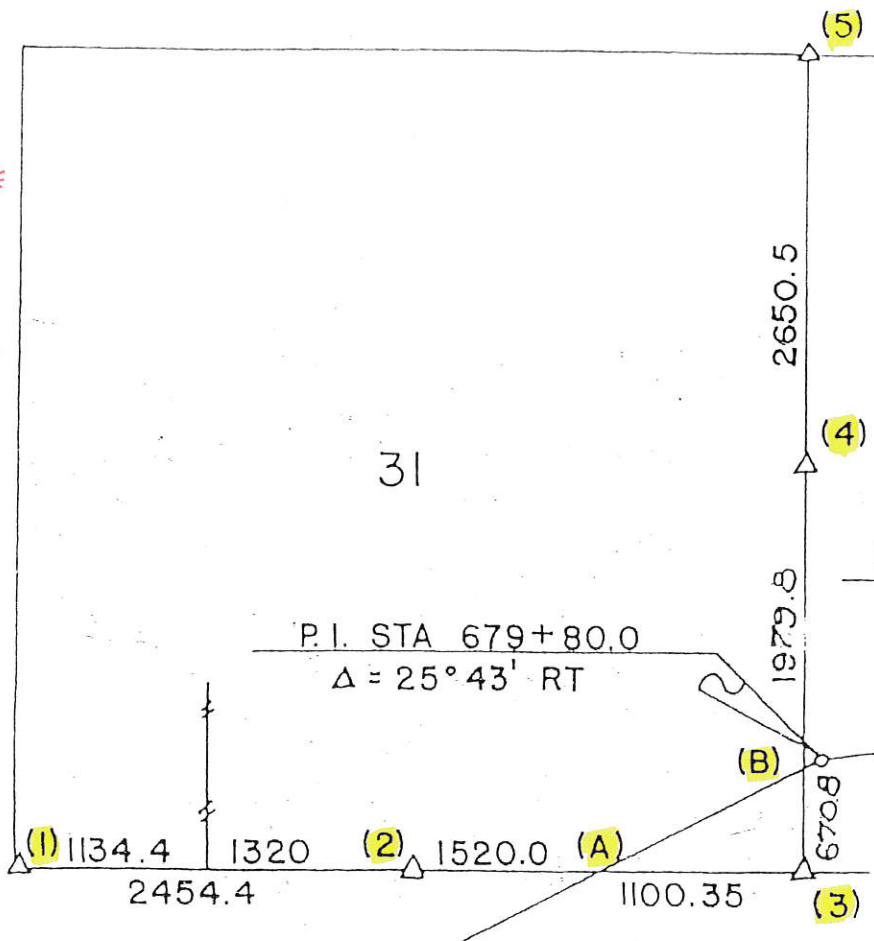
Sec 31

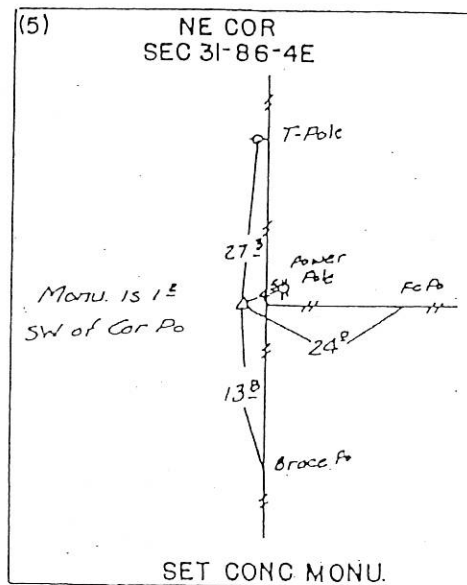
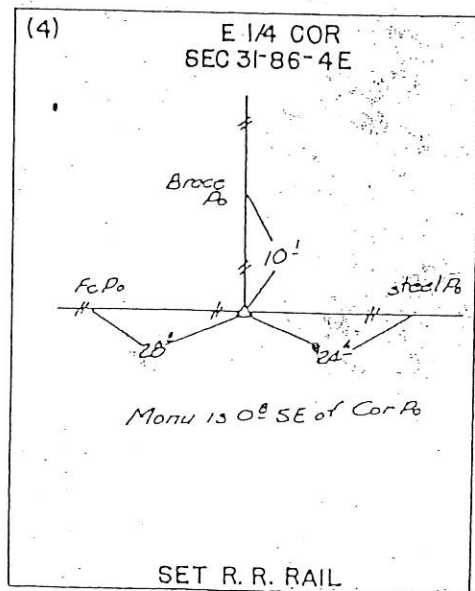
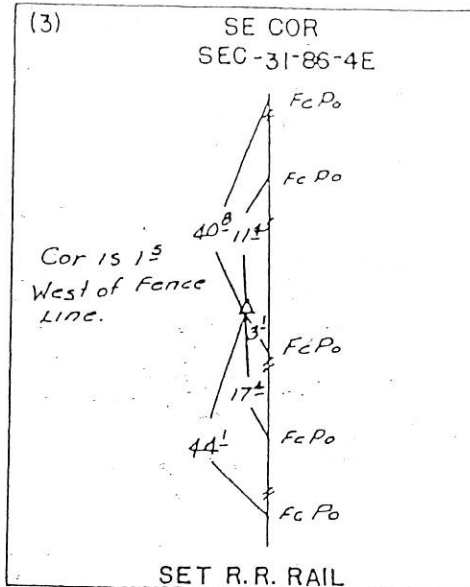
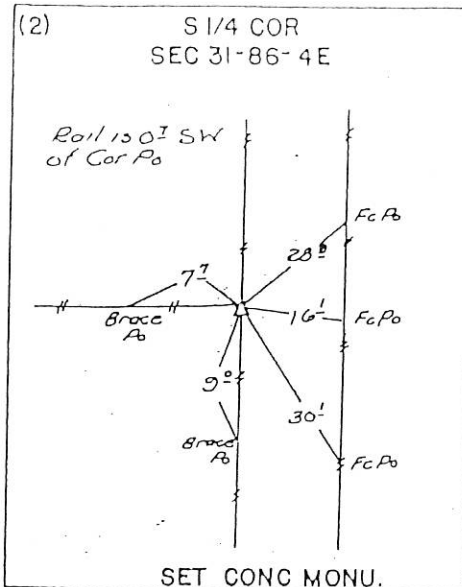
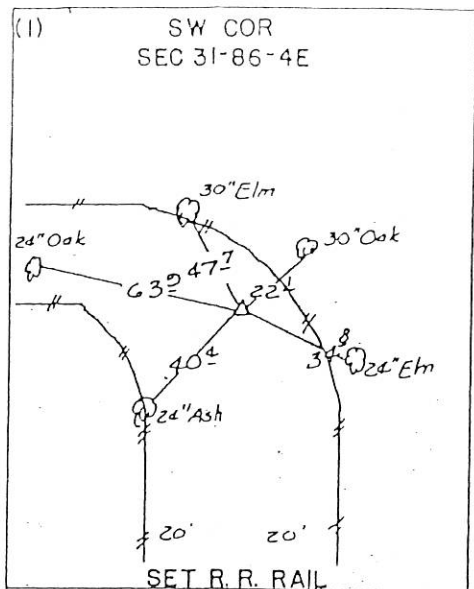
LAND T-86-N CORNER SURVEY R-4-WE
 MADE FOR IOWA STATE HIGHWAY COMMISSION FOR THE PURPOSE OF R.O.W. DESCRIPTIONS ON IOWA PRIMARY ROAD NO. 62 NORTHEAST FROM THE TOWN OF ANDREW TO THE TOWN OF BELLEVUE.
 MADE BY JOHN D. FRANKLIN JACKSON COUNTY R. L. S. NO. 2051 F-144
 JULY THRU SEPT. 1958
 ALL DISTANCES WERE CAREFULLY MEASURED AND MAY NOT AGREE WITH ROAD SURVEY STATIONING.
 FOR COMPLETE INFORMATION ON THIS SURVEY, SEE FIELD NOTES ON FILE IN AMES OFFICE.
 I HEREBY CERTIFY THAT THIS PLAT IS A TRUE REPRESENTATION OF A SURVEY MADE BY ME, ASSISTED BY JAMES D. FRANKLIN, R. F. POPELKA, R. H. JANS, W. M. NIER, L. R. MC GUIRE AND R. P. VAN HORBECK, ALL DULY SWORN, AND IS CORRECT TO THE BEST OF MY KNOWLEDGE.

SIGNED November 21, 1958



John D. Franklin
 JOHN D. FRANKLIN R. L. S. NO. 2051







Document 13-2406

Book 3 Page 91 Type 15 001 Pages 1
Date 6/13/2013 Time 8:32 AM
Rec Amt \$7.00

ARLENE SCHAUF, RECORDER/REGISTRAR
JACKSON COUNTY IOWA

PREPARED BY: MICHAEL J. WEBER, WEBER SURVEYING, LLC, 26789 46TH AVE, BERNARD, IA 52032 (563) 879-4173

UNITED STATES PUBLIC LAND SURVEY CORNER CERTIFICATE OF

LAND SURVEY MONUMENTS SITUATED IN SECTION 31, TOWNSHIP 86 NORTH, RANGE 4 EAST
OF THE FIFTH PRINCIPAL MERIDIAN, JACKSON COUNTY, IOWA.
PREVIOUSLY RECORDED NONE UNLESS OTHERWISE NOTED BELOW
(book, page, document number, etc.)

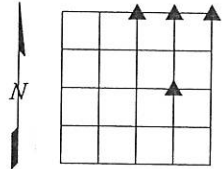
(Show reason for preparing this certificate, the evidence and detailed procedures used in establishing the corner positions and monumentation found or placed.)

Monument Description and Remarks:

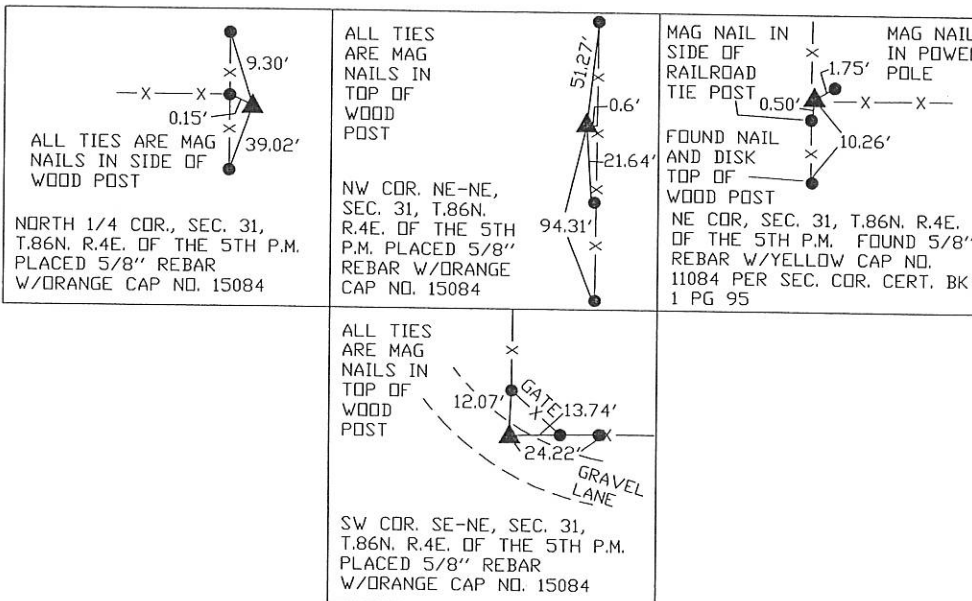
-NORTH 1/4 COR., SEC. 31, T.86N. R.4E. OF THE 5TH P.M. PLACED 5/8" REBAR W/ORANGE CAP NO. 15084. ESTABLISHED CORNER AT THE INTERSECTION OF THE OCCUPATION FENCELINE RUNNING WEST WITH THE OCCUPATION FENCELINE RUNNING NORTH AND SOUTH.
-NW COR. NE-NE, SEC. 31, T.86N. R.4E. OF THE 5TH P.M. PLACED 5/8" REBAR W/ORANGE CAP NO. 15084. ESTABLISHED CORNER MIDWAY AND ONLINE WITH THE NORTH 1/4 CORNER AND THE NE CORNER OF SECTION 31.
-NE COR. SEC. 31, T.86N. R.4E. OF THE 5TH P.M. FOUND 5/8" REBAR W/YELLOW CAP NO. 11084 PREVIOUSLY RECORDED AS THE SW COR. OF SEC. 29, T.86N. R.4E. IN SEC. COR. CERT. BK 1 PG 95. ESTABLISHED NEW TIES.
-SW COR. SE-NE, SEC. 31, T.86N. R.4E. OF THE 5TH P.M. PLACED 5/8" REBAR W/ORANGE CAP NO. 15084. ESTABLISHED CORNER AT THE INTERSECTION OF THE OCCUPATION FENCELINE RUNNING NORTH WITH THE OCCUPATION FENCELINE RUNNING EAST.

(Show a minimum of three reference ties to durable physical objects, relevant monuments and physical conditions that will enable recovery of the corner.)

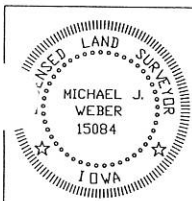
PLAN - VIEW



DRAWING NOT TO SCALE



DWG. NO. 13040



I HEREBY CERTIFY THAT THIS LAND SURVEYING DOCUMENT WAS PREPARED AND THE RELATED SURVEY WORK WAS PERFORMED BY ME OR UNDER MY DIRECT PERSONAL SUPERVISION AND THAT I AM A DULY LICENSED LAND SURVEYOR UNDER THE LAWS OF THE STATE OF IOWA.

Michael J. Weber June 12, 2013
MICHAEL J. WEBER (DATE)
LICENSE NUMBER 15084
MY LICENSE RENEWAL DATE IS DECEMBER 31, 2013

SHEETS COVERED BY THIS SEAL: THIS SHEET

List Corners to be Indexed			
Corner	Sec	Twp	Range
NORTH 1/4	31	86N	4E
NW COR., NE-NE	31	86N	4E
NE COR.	31	86N	4E
SW COR., SE-NE	31	86N	4E