

Document 05-1285

Book 2 Page 347 Type 06 023 Pages 1  
Date 4/04/2005 Time 12:31 PM  
Rec Amt \$7.00

PHYLLIS M. GERLACH, RECORDER  
JACKSON COUNTY IOWA

Prepared by Wm. Burger Land Surveyors

510 3rd Street West Court, Worthington, Iowa

Phone 563 - 055 2020

# UNITED STATES PUBLIC LAND SURVEY CORNER CERTIFICATE

Land Survey Monuments situated in Section 31, Township 86N, Range 5E, of the Fifth Principal Meridian, Jackson County, Iowa. Previously recorded in N/A in the Office of the County Recorder

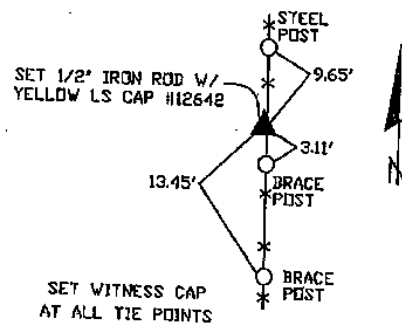
Monument Description and Remarks: (No Corner Certificates found at the County Recorders Office)  
SE CORNER NE1/4 NE1/4 - SET 1/2" IRON ROD W/ YELLOW LS CAP #12642 - SET MIDWAY BETWEEN THE  
E1/4 CORNER AND THE NE CORNER AND ADJUSTED EAST TO OLD FENCELINE  
N1/4 CORNER - FOUND 5/8" IRON ROD W/ ORANGE LS CAP #10134

E1/4 CORNER - FOUND CONCRETE MONUMENT

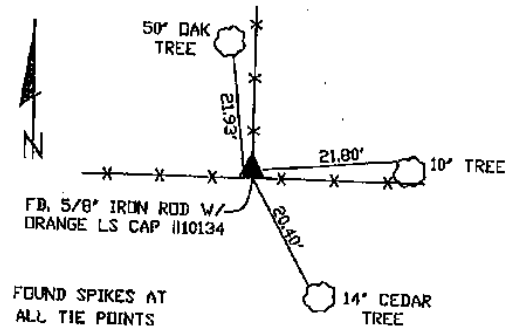
NE CORNER - SET 1/2" IRON ROD W/ YELLOW LS CAP #12642 - USED EXISTING FENCELINE ALONG NORTH LINE OF THE NE1/4 OF SECTION 31 AS EVIDENCE AND CENTERLINE OF OLD ROAD AS EVIDENCE IN WHICH OLD ROAD RECORDS CALLED OUT FOR ROAD TO BE CENTERED ON SECTION LINE. SET CORNER IN LINE WITH NORTH - SOUTH FENCE

## PLAN VIEW

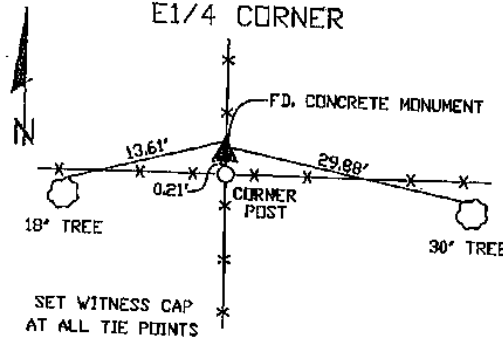
### SE CORNER NE1/4 NE1/4



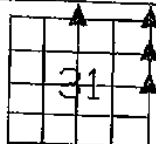
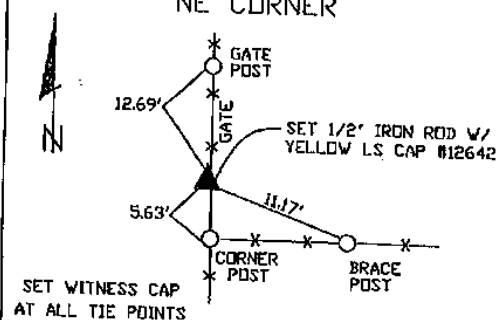
### N1/4 CORNER



### E1/4 CORNER



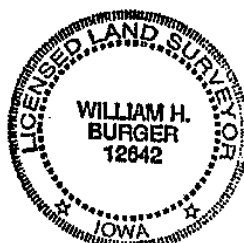
### NE CORNER



SEC. 31 TWP. 86N RANGE 5E

### CORNERS TO BE INDEXED

SE CORNER NE1/4 NE1/4	31	86N	5E
N1/4 CORNER	31	86N	5E
E1/4 CORNER	31	86N	5E
NE CORNER	31	86N	5E



I hereby certify that this land surveying document was prepared and related survey work was performed by me or under my direct personal supervision and that I am a duly licensed Land Surveyor under the laws of the State of Iowa.

William H. Burger 3/12/05  
Date

License number 12642

My license renewal date is December 31, 2006

Pages or Sheets covered by this seal: Sheet 1 of 1



Document 20-5401

Type 15 001

Pages 1

Date 12/21/2020 Time 8:55 AM

Rec Amt \$7.00

ARLENE SCHAUF, RECORDER/REGISTRAR  
JACKSON COUNTY IOWA

PREPARED BY: MICHAEL J. WEBER, WEBER SURVEYING, LLC, 26789 46TH AVE, BERNARD, IA 52032 (563) 879-4173

# UNITED STATES PUBLIC LAND SURVEY CORNER CERTIFICATE OF

LAND SURVEY MONUMENTS SITUATED IN SECTION 31, TOWNSHIP 86 NORTH, RANGE 5 EAST OF THE  
FIFTH PRINCIPAL MERIDIAN, JACKSON COUNTY, IOWA.  
PREVIOUSLY RECORDED EAST 1/4 COR. DOC NO. 05-1285, BK-2, PG-347

(book, page, document number, etc.)

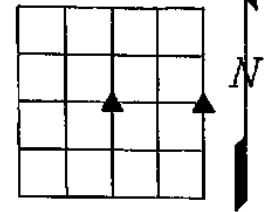
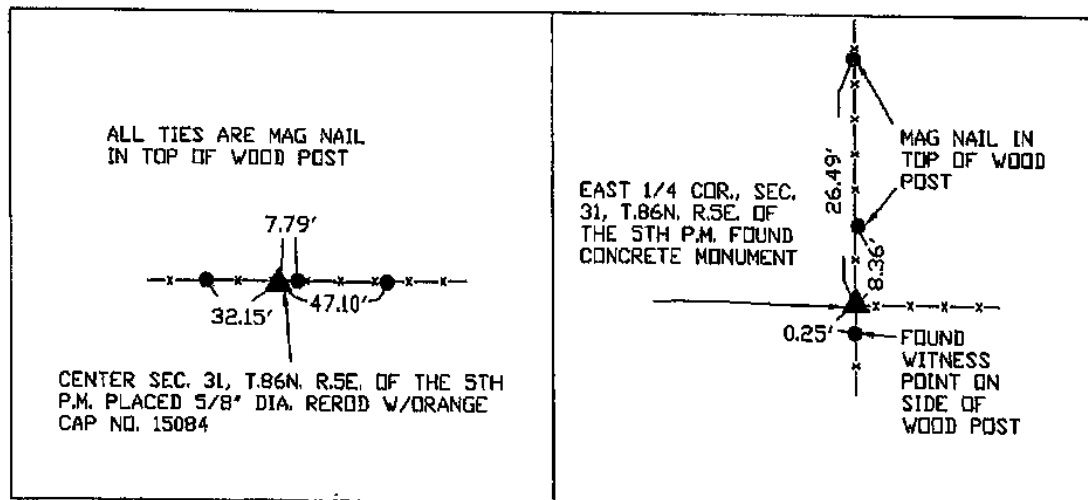
(Show reason for preparing this certificate, the evidence and detailed procedures used in establishing the corner positions and monumentation found or placed.)

-EAST 1/4 COR., SEC. 31, T.86N. R.5E. OF THE 5TH P.M. FOUND CONCRETE MONUMENT PER. SEC. COR. CERT. DOC NO. 05-1285, BK-2, PG-347, ESTABLISHED NEW TIES.

-CENTER, SEC. 31, T.86N. R.5E. OF THE 5TH P.M. PLACED 5/8" DIA. REROD W/ORANGE PLASTIC CAP NO. 15084. ESTABLISHED CORNER ALONG THE EAST WEST OCCUPATION FENCE LINE MIDWAY BETWEEN THE EAST 1/4 AND THE WEST 1/4 OF SAID SEC.

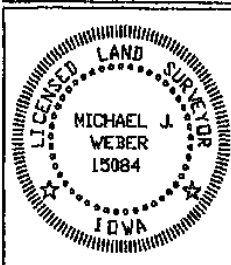
(Show a minimum of three reference ties to durable physical objects, relevant monuments and physical conditions that will enable recovery of the corner.)

## PLAN - VIEW



DRAWING NOT TO SCALE

DWG. NO.  
20148



I HEREBY CERTIFY THAT THIS LAND SURVEYING DOCUMENT WAS  
PREPARED AND THE RELATED SURVEY WORK WAS PERFORMED BY ME OR  
UNDER MY DIRECT PERSONAL SUPERVISION AND THAT I AM A DULY  
LICENSED LAND SURVEYOR UNDER THE LAWS OF THE STATE OF IOWA.

*Michael J. Weber* December 20, 2020  
MICHAEL J. WEBER (DATE)

LICENSE NUMBER 15084

MY LICENSE RENEWAL DATE IS DECEMBER 31, 2021

SHEETS COVERED BY THIS SEAL: THIS SHEET

List Corners to be Indexed  
Corner Sec Tap Range

EAST 1/4 COR.	31	86N	5E
CENTER	31	86N	5E