

98 1718  
FILE NO. 800K 1 PAGE 347  
1998 MAY 11 A 10:08

IHW ENGINEERS & SURVEYORS, P.C., 4155 PENNSYLVANIA AVE., DUBUQUE, IOWA 52002  
JIMMY KITCHEN  
JACKSON COUNTY, IOWA  
RECORDER

# UNITED STATES PUBLIC LAND SURVEY CORNER CERTIFICATE OF

LAND SURVEY MONUMENTS SITUATED IN SECTION 30, TOWNSHIP 86, RANGE 4 EAST  
OF THE FIFTH PRINCIPAL MERIDIAN, JACKSON COUNTY, IOWA.  
PREVIOUSLY RECORDED IN \_\_\_\_\_ IN COUNTY RECORDER'S OFFICE.

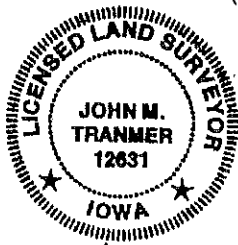
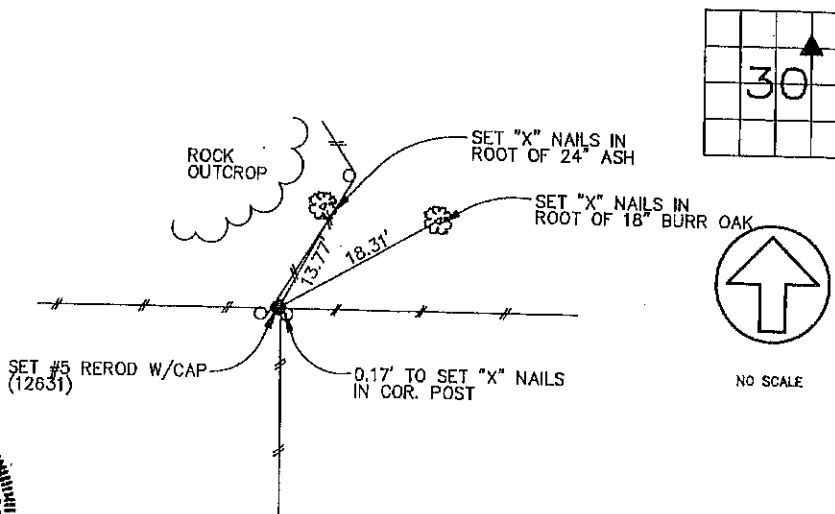
(Show reason for preparing this certificate, the evidence and detailed procedures used in establishing the corner positions and monumentation found or placed.)

## Monument Description and Remarks:

NW CORNER, SE 1/4, NE 1/4, SECTION 30, T86N, R4E -- SET #5 REROD W/CAP(12631) AT FENCE CORNER.

## PLAN - VIEW

(Show a minimum of three reference ties to durable physical objects, relevant monuments and physical conditions that will enable recovery of the corner.)



I HEREBY CERTIFY THAT THE SURVEY WORK WAS COMPLETED AND THIS CERTIFICATE WAS PREPARED BY ME OR UNDER MY DIRECT PERSONAL SUPERVISION AND THAT I AM A DULY REGISTERED LAND SURVEYOR UNDER THE LAWS OF THE STATE OF IOWA.

JOHN M. TRANMER REG. NO. 12631

DATE: 4-9-98  
MY REGISTRATION EXPIRES DECEMBER 31, 1996

## LIST CORNERS TO BE INDEXED

CORNERS	SECTION	TWP	RANGE
NW COR, SE 1/4, NE 1/4	30	T86N	R4E



ENGINEERS AND  
SURVEYORS P.C.

Iowa, Illinois, Wisconsin  
4155 Pennsylvania Ave.  
Dubuque, Ia. 52002  
(319) 658-2444  
Cullenburg, IA  
Dolans, IL  
Cuba City, WI

## MONUMENT RECORD

COUNTY: JACKSON  
TOWNSHIP: BELLEVUE

DATE: 4-06-98  
REVISED:

FIELD  
BOOK NO. 344

PROJ.  
NO. 97738

INDEX  
NO.

FILE NO. **98 1719**  
BOOK **1** PAGE **348**

1998 MAY 11 A 10:08

HW ENGINEERS & SURVEYORS, P.C. 4155 PENNSYLVANIA AVE. DUBUQUE, IOWA

SHIRLEY ATTENDOUR  
JACKSON COUNTY IOWA  
RECORDER *See 602*

## UNITED STATES PUBLIC LAND SURVEY CORNER CERTIFICATE OF

LAND SURVEY MONUMENTS SITUATED IN SECTION 30, TOWNSHIP 86 NORTH, RANGE 4 EAST  
OF THE FIFTH PRINCIPAL MERIDIAN, JACKSON COUNTY, IOWA.  
PREVIOUSLY RECORDED IN \_\_\_\_\_ IN COUNTY RECORDER'S OFFICE.

(Show reason for preparing this certificate, the evidence and detailed procedures used in establishing the corner positions and monumentation found or placed.)

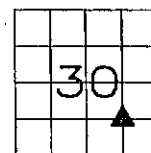
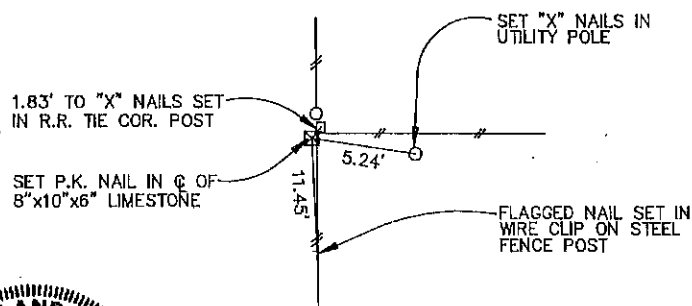
**Monument Description and Remarks:**

SW CORNER, NE 1/4, SE 1/4, SECTION 30, T86N, R4E - SET P.K. NAIL IN C OF FOUND

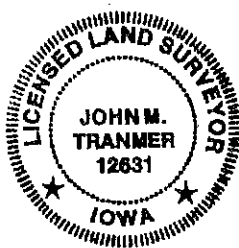
8"x10"x6" RECTANGULAR LIMESTONE.

### PLAN - VIEW

(Show a minimum of three reference ties to durable physical objects, relevant monuments and physical conditions that will enable recovery of the corner.)



NO SCALE



I HEREBY CERTIFY THAT THE SURVEY WORK WAS COMPLETED AND THIS CERTIFICATE WAS PREPARED BY ME OR UNDER MY DIRECT PERSONAL SUPERVISION AND THAT I AM A DULY REGISTERED LAND SURVEYOR UNDER THE LAWS OF THE STATE OF IOWA.

*John M. Tranmer*  
JOHN M. TRANMER REG. NO. 12631

DATE: 4-9-98  
MY REGISTRATION EXPIRES DECEMBER 31, 1998

**LIST CORNERS TO BE INDEXED**

CORNERS	SECTION	TWP	RANGE
SW COR, NE 1/4, SE 1/4	30	T86N	R4E



Iowa, Illinois, Wisconsin

**ENGINEERS AND  
SURVEYORS P.C.**

4155 Pennsylvania Ave.  
Dubuque, Ia. 52002  
(319) 556-2444

Guttenberg, IA  
Galena, IL  
Dubuque City, WI

### MONUMENT RECORD

COUNTY: JACKSON  
TOWNSHIP: BELLEVUE

DATE: 4-06-98  
REVISED:

FIELD  
BOOK NO. 344

PROJ.  
NO. 97738

INDEX  
NO.



Document 12-458

Book 3 Page 30 Type 15 001 Pages 1  
Date 2/01/2012 Time 10:35 AM  
Rec Amt \$7.00

ARLENE SCHAUF, RECORDER/REGISTRAR  
JACKSON COUNTY IOWA

Prepared by Wm. Burger Land Surveyor 610 3rd Street West Court, Worthington, Iowa Phone 663 - 655 2020

### UNITED STATES PUBLIC LAND SURVEY CORNER CERTIFICATE

Land Survey Monuments situated in Section 30, Township 86N, Range 4E, of the Fifth Principal Meridian, Jackson County, Iowa. Previously recorded in see note in the Office of the County Recorder

**Monument Description and Remarks:**

NW CORNER SE1/4 NE1/4 - FD. 5/8" IRON ROD W/ RED LS CAP #12631

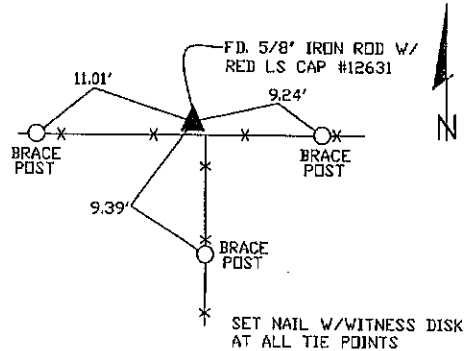
SW CORNER NE1/4 SE1/4 - FD. STONE W/ NAIL

Note: NW Corner SE1/4 NE1/4 previously recorded in BOOK 1, PAGE 347

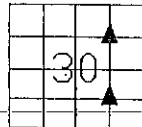
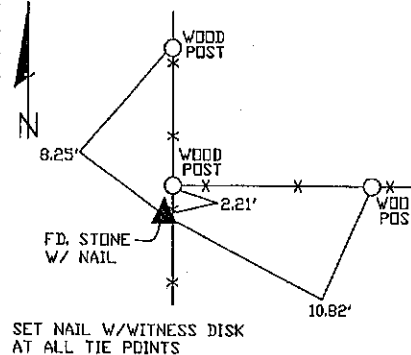
Note: SW Corner NE1/4 SE1/4 previously recorded in BOOK 1, PAGE 348

#### PLAN VIEW

NW CORNER SE1/4 NE1/4



SW CORNER NE1/4 SE1/4

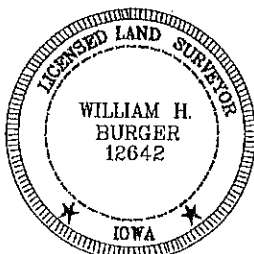


SEC. 30 TWP. 86N RANGE 4E

#### CORNERS TO BE INDEXED

NW CORNER SE1/4 NE1/4 30 86N 4E

SW CORNER NE1/4 SE1/4 30 86N 4E



I hereby certify that this land surveying document was prepared and related survey work was performed by me or under my direct personal supervision and that I am a duly licensed Land Surveyor under the laws of the State of Iowa.

William H. Burger 1/25/12  
William H. Burger Date

License number 12642

My license renewal date is December 31, 2012

Pages or Sheets covered by this seal Sheet 1 of 1



Document 13-2405

Book 3 Page 90 Type 15 001 Pages 1  
Date 6/13/2013 Time 8:32 AM  
Rec Amt \$7.00

ARLENE SCHAUF, RECORDER/REGISTRAR  
JACKSON COUNTY IOWA

PREPARED BY: MICHAEL J. WEBER, WEBER SURVEYING, LLC, 26789 46TH AVE, BERNARD, IA 52032 (563) 879-4173

## UNITED STATES PUBLIC LAND SURVEY CORNER CERTIFICATE OF

LAND SURVEY MONUMENTS SITUATED IN SECTION 30, TOWNSHIP 86 NORTH, RANGE 4 EAST  
OF THE FIFTH PRINCIPAL MERIDIAN, JACKSON COUNTY, IOWA.

PREVIOUSLY RECORDED NONE UNLESS OTHERWISE NOTED BELOW

(book, page, document number, etc.)

(Show reason for preparing this certificate, the evidence and detailed procedures used in establishing the corner positions and monumentation found or placed.)

Monument Description and Remarks:

*Shown → NE*

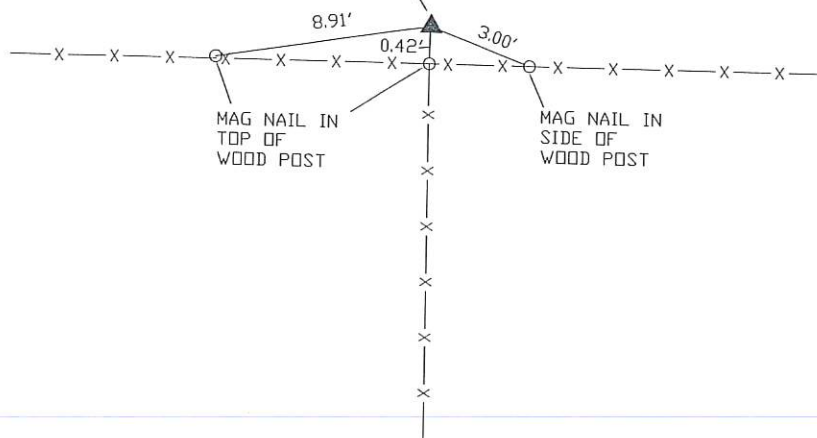
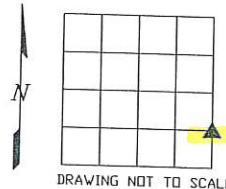
-NW COR. SE-SE, SEC. 30, T.86N. R.4E. OF THE 5TH P.M. PLACED 5/8" REBAR W/ORANGE CAP NO. 15084. ESTABLISHED CORNER AT THE INTERSECTION OF THE OCCUPATION FENCELINE RUNNING SOUTH WITH THE OCCUPATION FENCELINE RUNNING EAST AND WEST.

(Show a minimum of three reference ties to durable physical objects, relevant monuments and physical conditions that will enable recovery of the corner.)

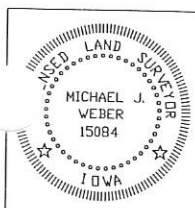
### PLAN - VIEW

*Shown → NE*

NW COR. SE-SE, SEC. 30,  
T.86N. R.4E. OF THE 5TH  
P.M. PLACED 5/8" REBAR  
W/ORANGE CAP NO. 15084



DWG. NO. 13040



I HEREBY CERTIFY THAT THIS LAND SURVEYING DOCUMENT WAS  
PREPARED AND THE RELATED SURVEY WORK WAS PERFORMED BY ME OR  
UNDER MY DIRECT PERSONAL SUPERVISION AND THAT I AM A DULY  
LICENSED LAND SURVEYOR UNDER THE LAWS OF THE STATE OF IOWA.

MICHAEL J. WEBER (DATE) June 12, 2013  
LICENSE NUMBER 15084  
MY LICENSE RENEWAL DATE IS DECEMBER 31, 2013  
SHEETS COVERED BY THIS SEAL 1 THIS SHEET

List Corners to be Indexed  
Corner *NE Shown* Sec Twp Range  
NW COR, SE-SE 30 86N 4E



Document 21-2345

Type 15 001

Pages 1

Date 6/01/2021 Time 8:27 AM

Rec Amt \$7.00

ARLENE SCHAUF, RECORDER/REGISTRAR  
JACKSON COUNTY IOWA

PREPARED BY: MICHAEL J. WEBER, WEBER SURVEYING, LLC, 26789 46TH AVE, BERNARD, IA 52032 (563) 879-4173

UNITED STATES PUBLIC LAND SURVEY CORNER CERTIFICATE  
OFLAND SURVEY MONUMENTS SITUATED IN SECTION 30, TOWNSHIP 86 NORTH, RANGE 4 EAST  
OF THE FIFTH PRINCIPAL MERIDIAN, JACKSON COUNTY, IOWA.  
PREVIOUSLY RECORDED

(book, page, document number, etc.)

(Show reason for preparing this certificate, the evidence and detailed procedures used in establishing the corner  
positions and monumentation found or placed.)

Monument Description and Remarks:

NORTH 1/4 COR., SEC. 30, T.86N. R.4E. OF THE 5TH P.M. PLACED 5/8" DIA. REROD W/ORANGE CAP NO.  
15084. ESTABLISHED CORNER AT PROPORTINATE DISTANCE BETWEEN THE SOUTH 1/4 CORNER OF SAID  
SEC. 30 AND THE CENTER OF SEC. 19, T.86N. R.4E. OF THE 5TH P.M. IN LINE WITH A BEST FIT LINE  
OF THE OCCUPATION FENCE LINE RUNNING SOUTH.SE COR OF THE NW FRACTIONAL 1/4, SEC. 30, T.86N. R.4E. OF THE 5TH P.M. PLACED 5/8" DIA. REROD  
W/ORANGE CAP NO. 15084. ESTABLISHED CORNER AT PROPORTINATE DISTANCE BETWEEN THE SOUTH 1/4  
CORNER OF SAID SEC. 30 AND THE NORTH 1/4 CORNER OF SAID SEC. 30.(Show a minimum of three reference ties to durable physical objects, relevant monuments and physical conditions that  
will enable recovery of the corner.)

## PLAN - VIEW

