



Document 12-510

Book 3 Page 32 Type 15 001 Pages 1

Date 2/06/2012 Time 11:52 AM

Rec Amt \$7.00

ARLENE SCHAUF, RECORDER/REGISTRAR
JACKSON COUNTY IOWA

PREPARED BY: MICHAEL J. WEBER, WEBER SURVEYING, LLC, 26789 46TH AVE, BERNARD, IA 52032 (563) 879-4173

UNITED STATES PUBLIC LAND SURVEY CORNER CERTIFICATE OF

LAND SURVEY MONUMENTS SITUATED IN SECTION 30, TOWNSHIP 86 NORTH, RANGE 5 EAST
OF THE FIFTH PRINCIPAL MERIDIAN, JACKSON COUNTY, IOWA.
PREVIOUSLY RECORDED NONE UNLESS NOTED BELOW

(book, page, document number, etc)

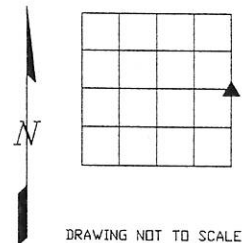
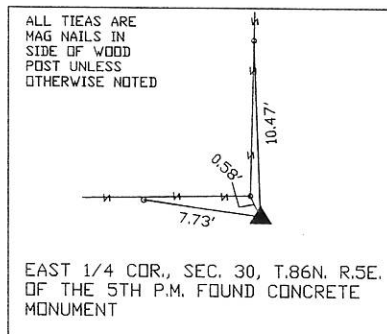
(Show reason for preparing this certificate, the evidence and detailed procedures used in establishing the corner positions and monumentation found or placed.)

Monument Description and Remarks:

-EAST 1/4 COR., SEC. 30, T.86N. R.5E. OF THE 5TH P.M. FOUND CONCRETE MONUMENT

(Show a minimum of three reference ties to durable physical objects, relevant monuments and physical conditions that will enable recovery of the corner.)

PLAN - VIEW



DWG. NO.
2010\STAMP\PARCEL-A

	I HEREBY CERTIFY THAT THIS LAND SURVEYING DOCUMENT WAS PREPARED AND THE RELATED SURVEY WORK WAS PERFORMED BY ME OR UNDER MY DIRECT PERSONAL SUPERVISION AND THAT I AM A DULY LICENSED LAND SURVEYOR UNDER THE LAWS OF THE STATE OF IOWA. <i>Michael J. Weber</i> January 5, 2012 MICHAEL J. WEBER (DATE) LICENSE NUMBER 15084 MY LICENSE RENEWAL DATE IS DECEMBER 31, 2013 SHEETS COVERED BY THIS SEAL 1 THIS SHEET	List Corners to be Indexed Corner Sec Twp Range EAST 1/4 COR, 30 86N 5E