



Document 09-4968

Book 2 Page 699 Type 15 001 Pages 1  
Date 12/29/2009 Time 2:34 PM  
Rec Amt \$9.00

ARLENE SCHAUF, RECORDER/REGISTRAR  
JACKSON COUNTY IOWA

PREPARED BY: MICHAEL J. WEBER, WEBER SURVEYING, LLC, 26789 46TH AVE, BERNARD, IA 52032 (563) 879-4173

# UNITED STATES PUBLIC LAND SURVEY CORNER CERTIFICATE OF

LAND SURVEY MONUMENTS SITUATED IN SECTION 2, TOWNSHIP 86 NORTH, RANGE 4 EAST  
OF THE FIFTH PRINCIPAL MERIDIAN, JACKSON COUNTY, IOWA.  
PREVIOUSLY RECORDED NONE UNLESS OTHERWISE NOTED  
(book, page, document number, etc.)

(Show reason for preparing this certificate, the evidence and detailed procedures used in establishing the corner positions and monumentation found or placed.)

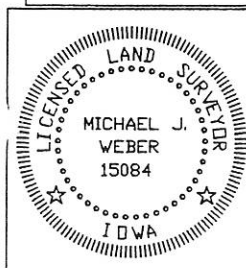
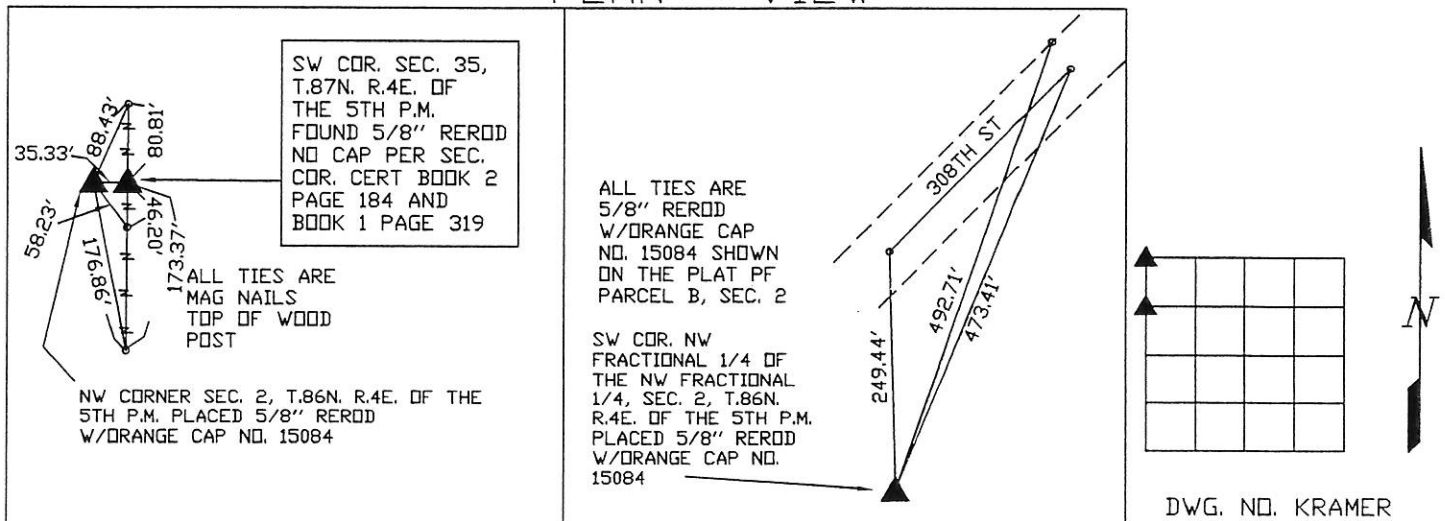
## Monument Description and Remarks:

-NW CORNER SEC. 2, T.86N. R.4E. OF THE 5TH P.M. PLACED 5/8" REROD W/ORANGE CAP NO. 15084  
USING THE ORIGINAL DISTANCE OF 53 LINKS WEST OF THE CORNER BETWEEN SEC. 34 & 35, T.87N.  
R.4E.

-SW COR. NW FRACTIONAL 1/4 OF THE NW FRACTIONAL 1/4, SEC. 2, T.86N. R.4E. OF THE 5TH P.M.  
PLACED 5/8" REROD W/ORANGE CAP NO. 15084 USING THE ORIGINAL DISTANCE OF 18.8 CHAINS SOUTH  
OF THE NW CORNER OF SEC. 2. AND USING FENCELINE EAST AND WEST

(Show a minimum of three reference ties to durable physical objects, relevant monuments and physical conditions that will enable recovery of the corner.)

## PLAN - VIEW



I HEREBY CERTIFY THAT THIS LAND SURVEYING DOCUMENT WAS  
PREPARED AND THE RELATED SURVEY WORK WAS PERFORMED BY ME OR  
UNDER MY DIRECT PERSONAL SUPERVISION AND THAT I AM A DULY  
LICENSED LAND SURVEYOR UNDER THE LAWS OF THE STATE OF IOWA.  
*Michael J. Weber* December 15, 2009  
MICHAEL J. WEBER (DATE)  
LICENSE NUMBER 15084  
MY LICENSE RENEWAL DATE IS DECEMBER 31, 2011  
SHEETS COVERED BY THIS SEAL: THIS SHEET

Corner	Sec	Twp	Range
NW COR.	2	86N	4E
SW COR, NW-NW	2	86N	4E

Book 2 Page 699