

UNITED STATES PUBLIC LAND SURVEY CORNER CERTIFICATE
OF

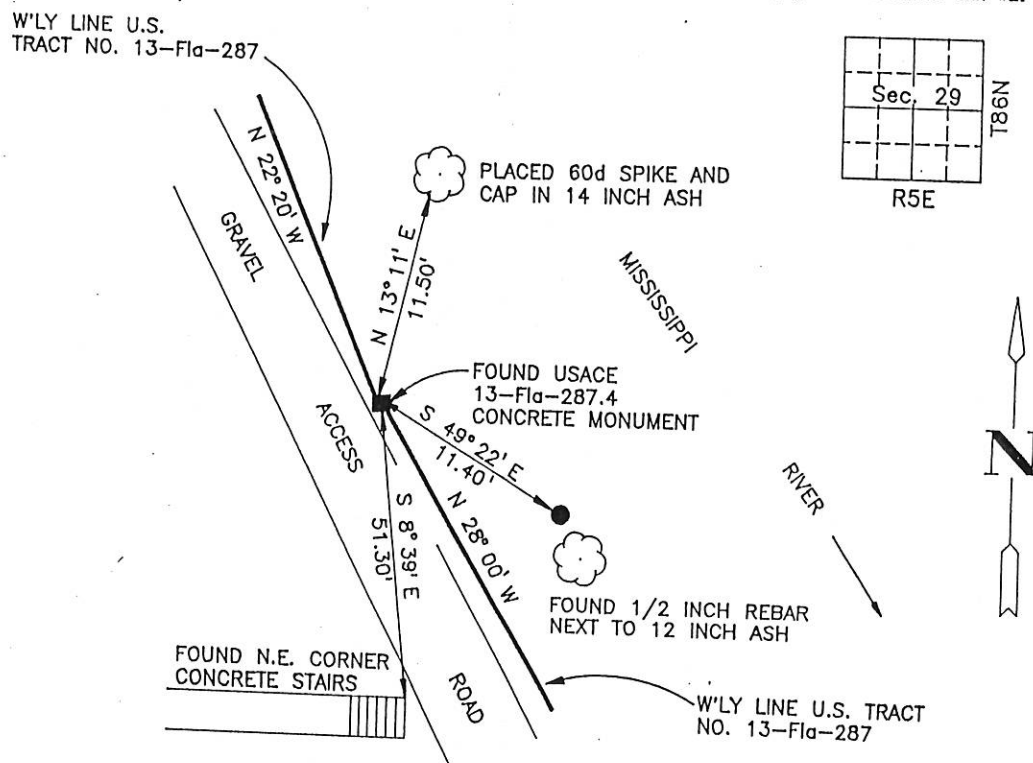
Land Survey Monuments situated in Section 29, Township 86 NORTH, Range 5 EAST of the Fifth Principal Meridian, JACKSON County, Iowa.
Previously Recorded in (does not apply) in the County Recorder's Office.
(book, page, document number, etc.)

(Show reason for preparing this certificate, the evidence and detailed procedures used in establishing the corner positions and monuments found or placed.)

Monument Description and Remarks: FOUND UNITED STATES ARMY CORPS OF ENGINEERS
CONCRETE MONUMENT DESIGNATED 13-Flq-287.4 FLUSH WITH GROUND.

PLAN VIEW

(Show a minimum of three reference ties to durable physical objects, relevant monuments and physical conditions that will enable recovery of the corner.)



I hereby certify that the survey work was completed and this land surveying document was prepared by me or under my direct personal supervision and that I am a duly registered land surveyor under the laws of the state of Iowa.

Signature: Lawrence A. Boyer
Lawrence A. Boyer

Date: OCTOBER 31, 1994 Reg. No. 9761

My registration renewal date is December 31, 1994

WHKS & CO.
120 Bryant Street
Dubuque, Iowa 52003
Phone 319-582-5481

SEAL



WHKS PROJECT No. 5231

List of Corners to be Indexed
 Corners Section Twp Range
 Fla-287 29 T86N R5E

FILE NO. 001112
BOOK 1 PAGE 219

1994 NOV 2 AM 9: 44

SHIRLY PITENBUR
JACKSON COUNTY, IOWA
RECORDED

Club ^{cc}

UNITED STATES PUBLIC LAND SURVEY CORNER CERTIFICATE OF

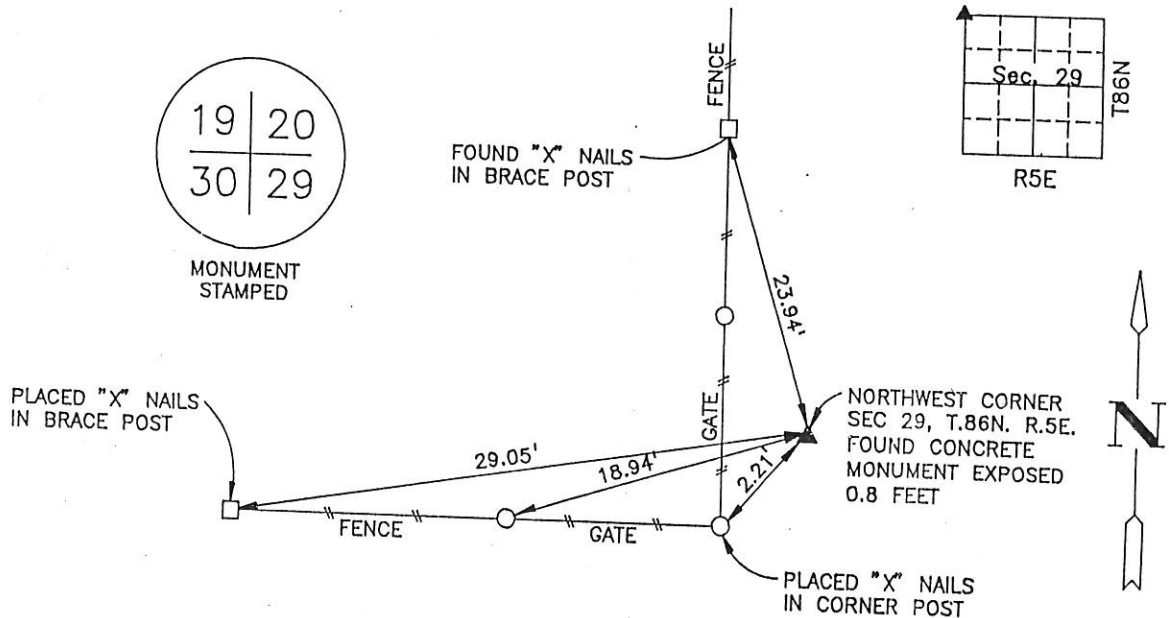
Land Survey Monuments situated in Section 29, Township 86 NORTH, Range 5 EAST of the Fifth Principal Meridian, JACKSON County, Iowa.
Previously Recorded in _____ (does not apply) in the County Recorder's Office.
(book, page, document number, etc.)

(Show reason for preparing this certificate, the evidence and detailed procedures used in establishing the corner positions and monuments found or placed.)

Monument Description and Remarks: FOUND CONCRETE MONUMENT
WITH BRASS CAP. MONUMENT IS EXPOSED 0.8 FEET.

PLAN VIEW

(Show a minimum of three reference ties to durable physical objects, relevant monuments and physical conditions that will enable recovery of the corner.)



I hereby certify that the survey work was completed and this land surveying document was prepared by me or under my direct personal supervision and that I am a duly registered land surveyor under the laws of the State of Iowa

Signature: Lawrence A. Boyer
Lawrence A. Boyer

Date: OCTOBER 31, 1994 Reg. No. 9761

My registration renewal date is December 31, 1994

WHKS & CO.
120 Bryant Street
Dubuque, Iowa 52003
Phone 319-582-5481

SEAL



WHKS PROJECT No. 5231

List of Corners to be Indexed
Corners Section Twp Range
NW CORNER 29 T86N R5E

FILE NO. 001113
BOOK 1 PAGE 220

1994 NOV 2 AM 9:44

SHIRLY KITEHOUR
JACKSON COUNTY, IOWA
RECORDER

Sub 00

UNITED STATES PUBLIC LAND SURVEY CORNER CERTIFICATE OF

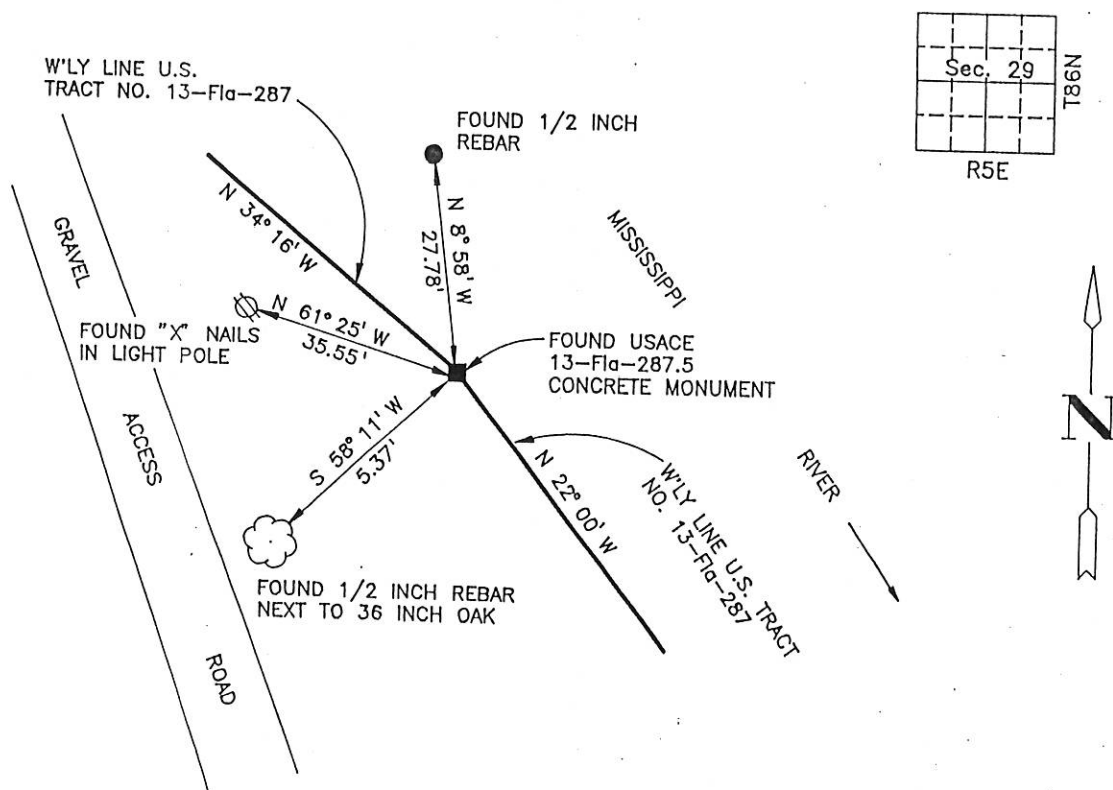
Land Survey Monuments situated in Section 29, Township 86 NORTH, Range 5 EAST of the Fifth Principal Meridian, JACKSON County, Iowa.
Previously Recorded in _____ (does not apply) _____ in the County Recorder's Office.
(book, page, document number, etc.)

(Show reason for preparing this certificate, the evidence and detailed procedures used in establishing the corner positions and monuments found or placed.)

Monument Description and Remarks: FOUND UNITED STATES ARMY CORPS OF ENGINEERS
CONCRETE MONUMENT DESIGNATED 13-Fla-287.5 EXPOSED 0.6 FEET ABOVE GROUND.

PLAN VIEW

(Show a minimum of three reference ties to durable physical objects, relevant monuments and physical conditions that will enable recovery of the corner.)



I hereby certify that the survey work was completed and this land surveying document was prepared by me or under my direct personal supervision and that I am a duly registered land surveyor under the laws of the state of Iowa

Signature: Lawrence A. Boyer

Lawrence A. Boyer

Date: OCTOBER 31, 1994

Reg. No. 9761

My registration renewal date is December 31, 1994

WHKS & CO.
120 Bryant Street
Dubuque, Iowa 52003
Phone 319-582-5481

SEAL



WHKS PROJECT No. 5231

Corners	Section	Twp	Range
Fla-287	29	T86N	R5E

FILE # 001114
BOOK 1 PAGE 221

1994 NOV 2 AM 9:44

SHIRLEY RITENBUR
JACKSON COUNTY, IOWA
RECORDER

Jul 6



Document 06-3897

Book 2 Page 486 Type 15 001 Pages 1

Date 10/06/2006 Time 3:09 PM

Rec Amt \$7.00

ARLENE SCHAUF, RECORDER
JACKSON COUNTY IOWA

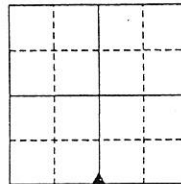
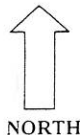
PREPARED BY: SCHENK ENGINEERING CO., 216 BROOKERIDGE DR., WATERLOO, IA 50702

UNITED STATES PUBLIC LAND SURVEY CORNER CERTIFICATE OF ~~319-232-748~~Land Survey Monuments situated in Section 29, Township 86, Range 5,
of the Fifth Principal Meridian, Jackson County, Iowa. Previously recorded in Book , Page ,
in County Recorder's Office.(Show reason for preparing this certificate, the evidence and detailed procedure used in establishing the corner positions and
monumentation found or placed.)Monument Description and Remarks: 1/4 Corner 29-86-5 Found standard
concrete monument w/ top 12" broken off. Found base, reset
broken section of monument on base, by placing dirt and
limestone around monument and compacting. Monument is
solid.Brass cap stamped (29) 4" of conc. monument
(86) exposed above surface.

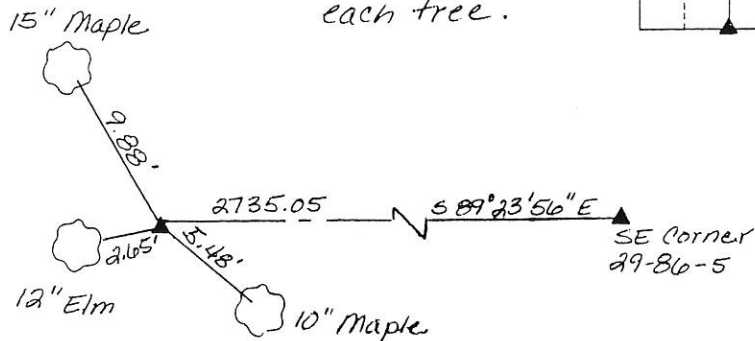
PLAN - VIEW

(Show a minimum of three reference ties to durable physical objects, relevant monuments and physical conditions that will
enable recovery of the corner.)

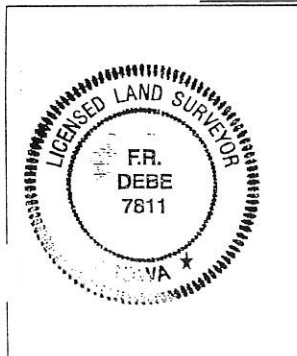
NOT TO SCALE

Note: Set P.K. Nail
in near face of
each tree.

NORTH

FIELD SURVEY: RDSPREPARED BY: RDS

CERTIFICATION

I hereby certify that this land surveying
document was prepared and the related survey
work was performed by me or under my direct
personal supervision and that I am a duly
licensed Land Surveyor under the laws of the
State of Iowa.F.R. Debe B-29-06
F. R. Debe (date)

License Number 7811

My license renewal date is December 31, 2006

Pages or sheets covered by this seal: 1

LIST CORNERS TO BE INDEXED

Corner	Section	Township	Range
S 1/4	29	86	5

Book 2 Page 486



Document 06-3898

Book 2 Page 487 Type 15 001 Pages 1

Date 10/06/2006 Time 3:09 PM

Rec Amt \$7.00

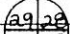
ARLENE SCHAUF, RECORDER
JACKSON COUNTY IOWA

PREPARED BY: SCHENK ENGINEERING CO., 216 BROOKERIDGE DR., WATERLOO, IA 50702

UNITED STATES PUBLIC LAND SURVEY CORNER CERTIFICATE OF 319-232-7480

Land Survey Monuments situated in Section 29, Township 84, Range 5,
of the Fifth Principal Meridian, Jackson County, Iowa. Previously recorded in Book _____, Page _____,
in County Recorder's Office.

(Show reason for preparing this certificate, the evidence and detailed procedure used in establishing the corner positions and monumentation found or placed.)

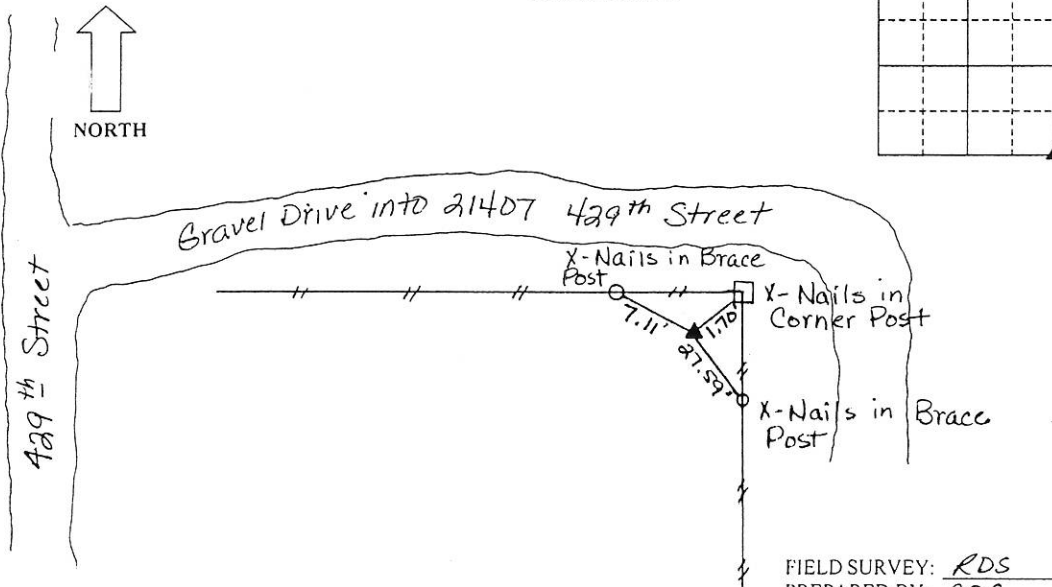
Monument Description and Remarks: Found standard concrete monument
with brass cap stamped  2" below surface.

Note: All distances are plumb distances.

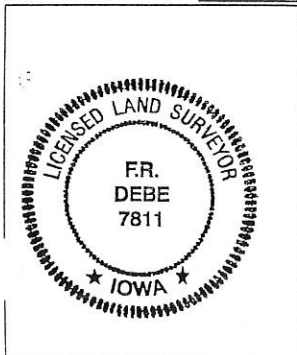
PLAN - VIEW

(Show a minimum of three reference ties to durable physical objects, relevant monuments and physical conditions that will enable recovery of the corner.)

NOT TO SCALE

FIELD SURVEY: RDSPREPARED BY: RDS

CERTIFICATION



I hereby certify that this land surveying document was prepared and the related survey work was performed by me or under my direct personal supervision and that I am a duly licensed Land Surveyor under the laws of the State of Iowa.

F. R. Debe

(date)

License Number 7811

My license renewal date is December 11, 2006.

Pages or sheets covered by this seal: 1

LIST CORNERS TO BE INDEXED

Corner	Section	Township	Range
SE	29	84	5

Book 2 Page 487