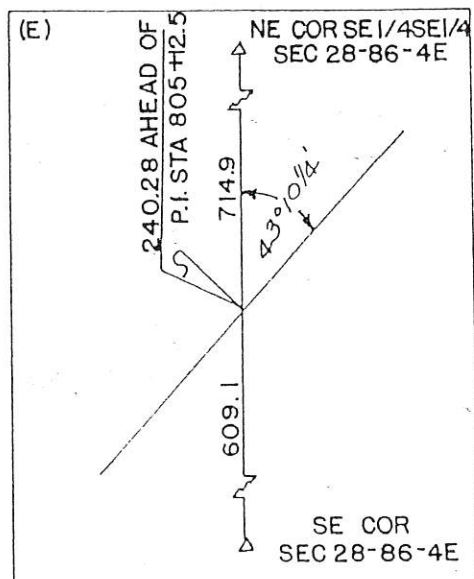
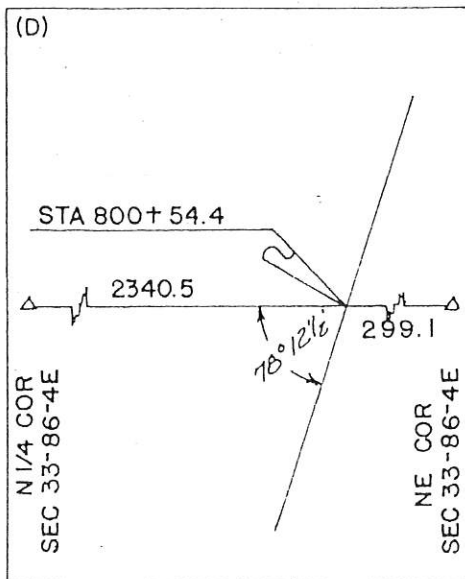
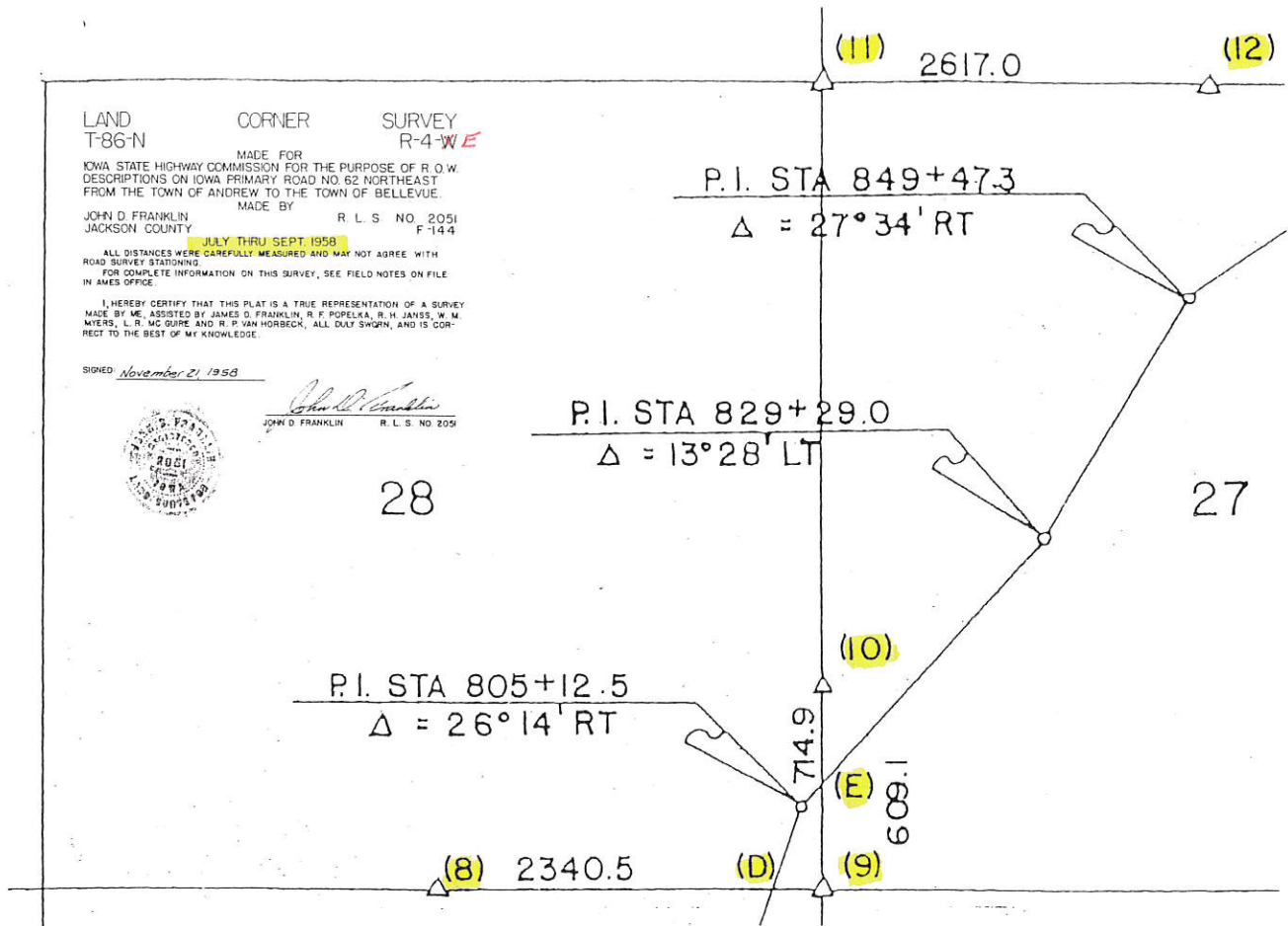
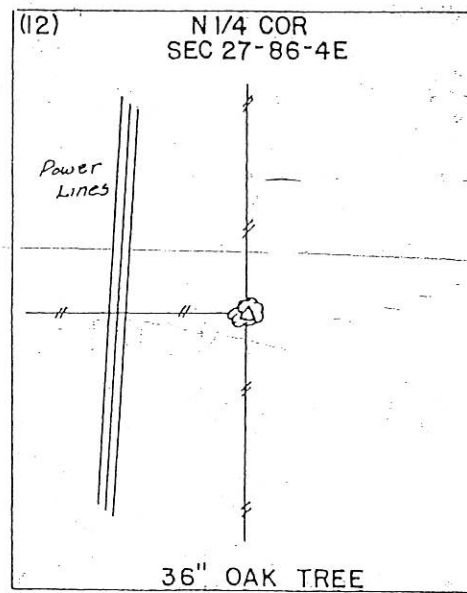
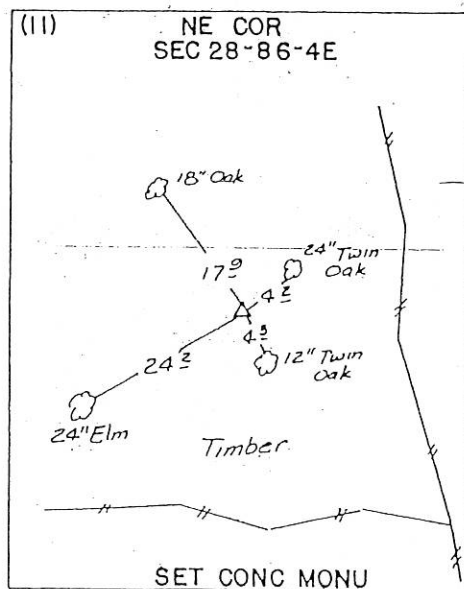
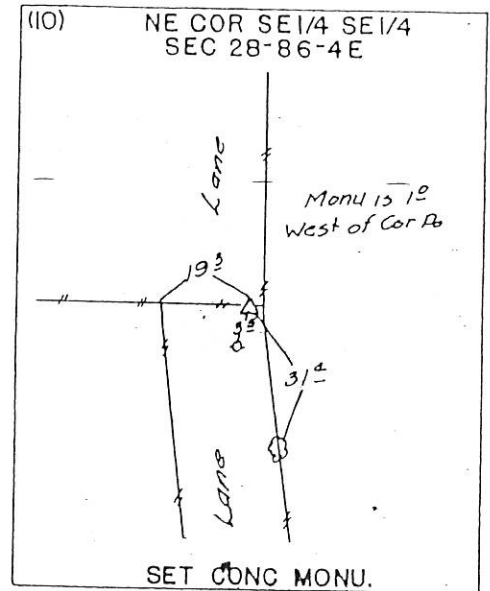
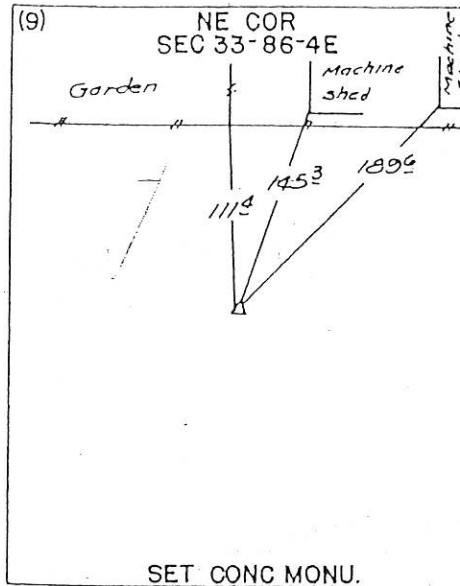
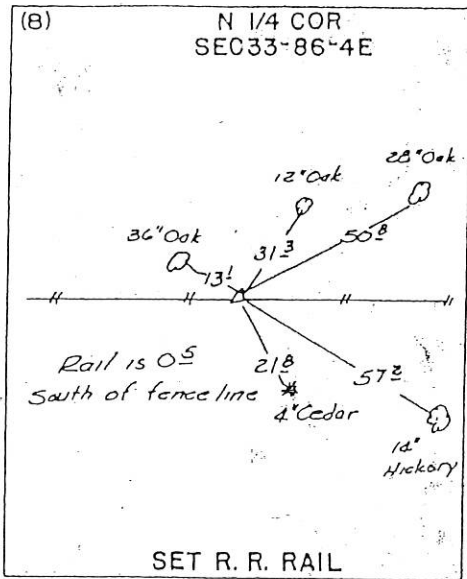


Sec. 28







Document 09-2136

Book 2 Page 675 Type 15 001 Pages 1

Date 6/03/2009 Time 11:21 AM

Rec Amt \$7.00

ARLENE SCHAUF, RECORDER/REGISTRAR
JACKSON COUNTY IOWA

PREPARED BY: MICHAEL J. WEBER, WEBER SURVEYING, LLC, 26789 46TH AVE, BERNARD, IA 52032 (563) 879-4173

UNITED STATES PUBLIC LAND SURVEY CORNER CERTIFICATE OF

LAND SURVEY MONUMENTS SITUATED IN SECTION 28, TOWNSHIP 86 NORTH, RANGE 4 EAST
OF THE FIFTH PRINCIPAL MERIDIAN, JACKSON COUNTY, IOWA.
PREVIOUSLY RECORDED NONE UNLESS OTHERWISE NOTED

(book, page, document number, etc.)

(Show reason for preparing this certificate, the evidence and detailed procedures used in establishing the corner positions and monumentation found or placed.)

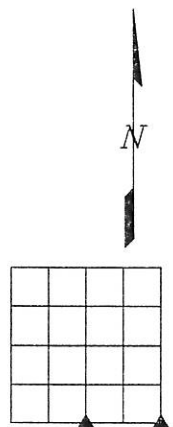
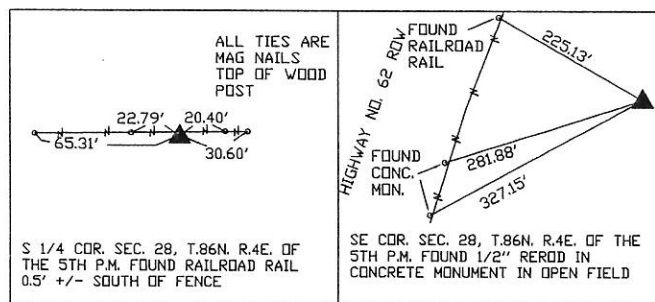
Monument Description and Remarks:

-S 1/4 COR. SEC. 28, T.86N. R.4E. OF THE 5TH P.M. FOUND RAILROAD RAIL AS SHOWN ON SECTION
CORNER TIE SHEETS BY THE IDOT FOR HIGHWAY NO. 62

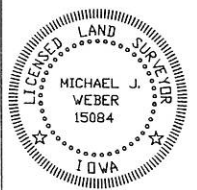
-SE COR. SEC. 28, T.86N. R.4E. OF THE 5TH P.M. FOUND 1/2" REROD IN CONCRETE MONUMENT AS
SHOWN ON SECTION CORNER TIE SHEETS BY THE IDOT FOR HIGHWAY NO. 62

(Show a minimum of three reference ties to durable physical objects, relevant monuments and physical conditions that will enable recovery of the corner.)

PLAN - VIEW



DWG. NO. KILBURG

	I HEREBY CERTIFY THAT THIS LAND SURVEYING DOCUMENT WAS PREPARED AND THE RELATED SURVEY WORK WAS PERFORMED BY ME OR UNDER MY DIRECT PERSONAL SUPERVISION AND THAT I AM A DULY LICENSED LAND SURVEYOR UNDER THE LAWS OF THE STATE OF IOWA. <i>Michael J. Weber</i> <u>May 21, 2009</u> MICHAEL J. WEBER (DATE) LICENSE NUMBER 15084 MY LICENSE RENEWAL DATE IS DECEMBER 31, 2009 SHEETS COVERED BY THIS SEAL: THIS SHEET		List Corners to be Indexed Corner Sec Twp Range S 1/4 COR. 28 86N 4E SE COR. 28 86N 4E

Book 2 Page 675



Document 13-3415

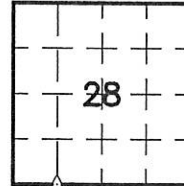
Book 3 Page 107 Type 15 001 Pages 1
Date 8/13/2013 Time 9:53 AM
Rec Amt \$7.00

ARLENE SCHAUF, RECORDER/REGISTRAR
JACKSON COUNTY IOWA

Scott A. Steinfadt PLS, Ryken Engineering, 739 Park Avenue, Ackley, Iowa 50601 - Ph. 641-847-3273 - Fax 641-847-2303

UNITED STATES PUBLIC LAND SURVEY CORNER CERTIFICATE OF

Land Survey Monuments situated in Section 28, Township 86 North,
Range 4 East, of the Fifth Principal Meridian, Jackson County, Iowa,
Previously recorded in Book 2 Page 697 in County Recorder's Office



This corner was used for a survey in this section for Joshua J. and Angela L. Scheckel. Basis of bearing for this corner certificate can be found on the associated plats of survey filed in the County Recorder's Office for this section.

BC = Iron Nail with Bottle Cap
BP = Brace Post
CP = Corner Post
CMP = Corrugated Metal Pipe
CM = 4" Sq Concrete Monument with $\frac{1}{2}$ "
iron rod in center (tie to rod)
CX = Cut 'X'
GP = Gate Post
IR = $\frac{3}{8}$ " ϕ x 2.0' Iron Rerod

Legend

ID = Inside Diameter
OD = Outside Diameter
PP = Power Pole
PW = Iron Nail with Plastic Washer
RCP = Reinforced Concrete Pipe
RH = Red Head (Iron Nail in wire)
RW = Iron Nail with Reflective Round Washer
ROW = Right of Way

R/W = Iron ROW Rail
SFP = Steel 'T' Post
SW = Iron Nail with Square Metal Washer
TP = Telephone Pedestal
TW = Iron Nail with Round Metal Washer
WFP = Wood Fence Post
X = Iron "X" Nails



SE Cor. W $\frac{1}{2}$ SW $\frac{1}{4}$

Set Witness Corner -
 $\frac{3}{4}$ " ϕ x 1.3' Red Capped
Iron Rerod (#14677)

196.66'



49.40'

Set Witness Corner -
 $\frac{3}{4}$ " ϕ x 2.0' Red Capped
Iron Rerod (#14677)

DRIVEWAY

130.00'

Found $\frac{3}{4}$ " ϕ Red
Capped Iron
Rerod (#14677)

SE Cor. W $\frac{1}{2}$ SW $\frac{1}{4}$ - History of Corner =

2009, Dec. 11 - ' $\frac{3}{4}$ " ϕ x 2.4" Red Capped Iron Rerod (#14677)' per County Recorder's Book 1-T Page 21.
2009, Dec. 11 - 'set a $\frac{3}{4}$ " ϕ x 2.0' red capped (#14677) iron rerod' per County Recorder's Book 2 Page 697.

Current County Engineer's ties match County Recorder's Book 2 Pages 697.

Corner Recovery =

Area has been cleared and lowered by approximately 15.0' by heavy equipment since original monument was set. Therefore set $\frac{3}{4}$ " ϕ x 2.0' Red Capped Iron Rerod (#14677), flush using one remaining record tie and coordinates from 2009 Survey. All ties are plumb distance.

This certificate is being prepared because there is a change to monumentation of record.



I hereby certify that this land surveying document was prepared and the related survey work was performed by me or under my direct personal supervision and that I am a duly licensed Land Surveyor under the laws of the State of Iowa.

Scott A. Steinfadt, PLS.
SCOTT A. STEINFADT, PLS
Date: 07/19/2013 License number: 14677
My license renewal date is December 31, 2014

Pages or sheets covered by this seal: 1

Corners to be Indexed

Corners	Section	Twp	Range
SE Cor. W $\frac{1}{2}$ SW $\frac{1}{4}$	28	86N	4E



Document 13-3416

Book 3 Page 108 Type 15 001 Pages 2

Date 8/13/2013 Time 9:54 AM

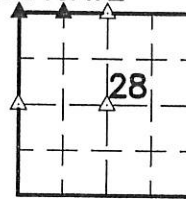
Rec Amt \$12.00

ARLENE SCHAUF, RECORDER/REGISTRAR
JACKSON COUNTY IOWA

Scott A. Steinfadt PLS, Ryken Engineering, 739 Park Avenue, Ackley, Iowa 50601 - Ph. 641-847-3273 - Fax 641-847-2303

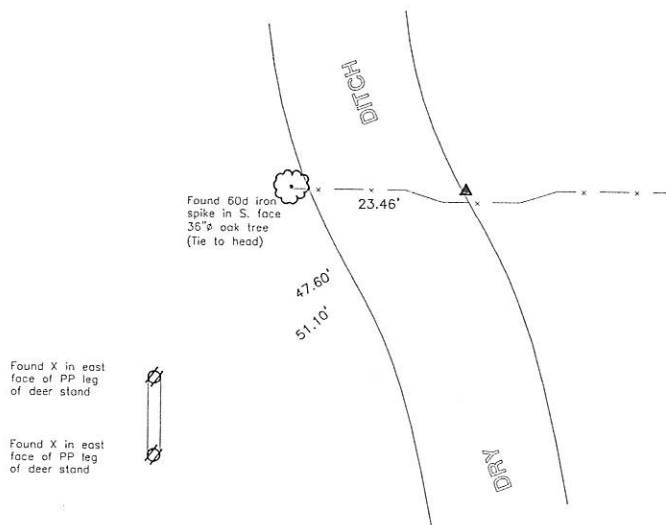
UNITED STATES PUBLIC LAND SURVEY CORNER CERTIFICATE
OF

Land Survey Monuments situated in Section 28, Township 86 North,
Range 4 East, of the Fifth Principal Meridian, Jackson County, Iowa,
Previously recorded in (see below) in County Recorder's Office
NW Corner - Book 2 Pages 138 & 601
All Others - Not Applicable



These corners were used for a survey in this section for Melvin J. Wagner Revocable Trust U/A/D July 12, 2010. Basis of bearing for this corner certificate can be found on the associated plats of survey filed in the County Recorder's Office for this section.

Legend		
BC = Iron Nail with Bottle Cap	ID = Inside Diameter	R/W = Iron ROW Rail
BP = Brace Post	OD = Outside Diameter	SFP = Steel 'T' Post
CP = Corner Post	PP = Power Pole	SW = Iron Nail with Square Metal Washer
CMP = Corrugated Metal Pipe	PW = Iron Nail with Plastic Washer	TP = Telephone Pedestal
CM = 4" Sq Concrete Monument with 1/2" Ø iron rod in center (tie to rerod)	RCP = Reinforced Concrete Pipe	TW = Iron Nail with Round Metal Washer
CX = Cut 'X'	RH = Red Head (Iron Nail in wire)	WFP = Wood Fence Post
GP = Gate Post	RW = Iron Nail with Reflective Round Washer	X = Iron "X" Nails
IR = 3/8" Ø x 2.0' Iron Rerod	ROW = Right of Way	

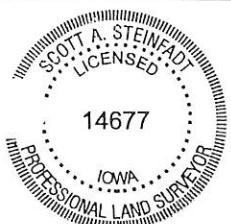
NW Corner**NW Corner - History of Corner =**

1998, Dec. 3 - "Set Iron Rod" per County Recorder's Book 1-J Book 128.
1998, Dec. 22 - "Set Iron Rod" per County Recorder's Book 1-K Book 6.
2001, Jan. 11 - "Set Iron Rod" per County Recorder's Book 1-L Book 106.
2003, Mar. 31 - "SET 3/8\"/>

Corner Recovery =

Searched area near intersection of record ties with a magnetic locator, excavated a 1.0' Ø x 1.0' deep hole at magnetic reading. Found a 3/8\"/>

This certificate is being prepared because there is a change to monumentation of record.



I hereby certify that this land surveying document was prepared and the related survey work was performed by me or under my direct personal supervision and that I am a duly licensed Land Surveyor under the laws of the State of Iowa.

Scott A. Steinfadt PLS
SCOTT A. STEINFADT, PLS

Date: 07/19/2013 License number: 14677

My license renewal date is December 31, 2014

Pages or sheets covered by this seal: 1, 2

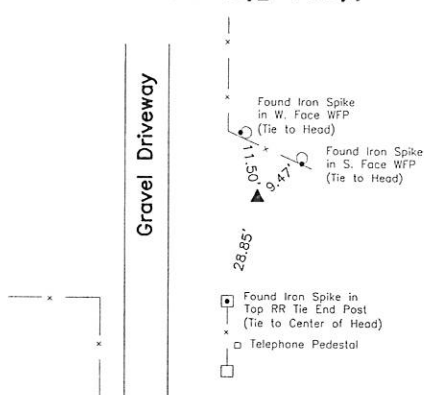
Corners to be Indexed

Corners	Section	Twp	Range
NW Corner	28	86N	4E
NW Cor. E½ NW¼	28	86N	4E
N¼ Corner	28	86N	4E
Center	28	86N	4E
W¼ Corner	28	86N	4E

Page 1 of 2

P:\6302\CADD\SURVEY\6302CERT.DWG

NW Cor. E $\frac{1}{2}$ NW $\frac{1}{4}$

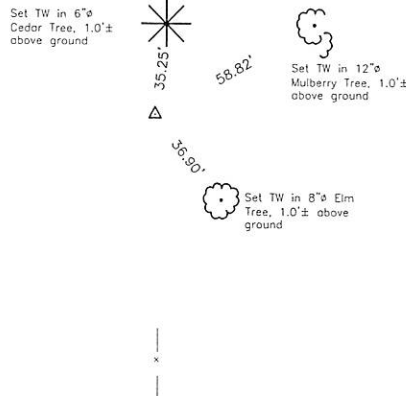


NW Cor. E $\frac{1}{2}$ NW $\frac{1}{4}$ - History of Corner =
2004, Feb. 6 - "RR SPIKE IN ROCK OUTCROPPING" per County Recorder's Book 1-0 Page 33.
Current County Engineer's ties do not indicate that corner is monumented.

Corner Recovery =
Searched area near fence intersections as indicated of the 2004 Survey with a magnetic locator. Found an iron RR spike, flush in rock outcrop, 17.5' east of apparent centerline of traveled surface of gravel driveway, 7.5' east of fenceline north and 21.0' north of fenceline west. Location of monument found matches that of record, monument found matches that of record. Therefore, used iron RR spike as the correct corner. All ties are plumb distance.

This certificate is being prepared because there are no certificates on file for this corner.

N $\frac{1}{4}$ Corner

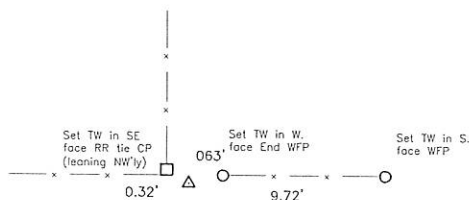


N $\frac{1}{4}$ Corner - History of Corner =
Current County Engineer's ties do not indicate that corner is monumented.

Corner Recovery =
Calculated a location for the N $\frac{1}{4}$ Corner by intersecting a line from the S $\frac{1}{4}$ Corner through the Center of Section with a line from the NW Corner through the NW Cor. E $\frac{1}{2}$ NW $\frac{1}{4}$. Searched area with a magnetic locator, excavated a 1.0' x 1.5' deep hole at magnetic reading. Found fence wire running north - south and several small limestone cobbles, 1.0' deep. Said calculated location is in-line with fenceline South. Therefore since no available County records indicate monumentation of the N $\frac{1}{4}$ Corner and no monumentation could be located, set a $\frac{3}{4}$ " x 4.0' aluminum capped iron rod (#14677), flush at said calculated location. Also searched with a magnetic locator, an area at a point online and double the distance between said NW Corner and said NE Cor. E $\frac{1}{2}$ NW $\frac{1}{4}$ to the east and found no magnetic readings. This location was not accepted as it falls 35.0' east of an existing fence running south. All ties are plumb distance.

This certificate is being prepared because there are no certificates on file for this corner.

Center



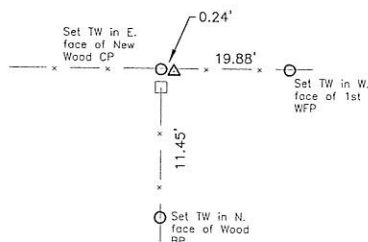
Center - History of Corner =
1988, Feb. 13 - County Recorder's Book 1-F Page 147 indicates usage of corner but not type of monumentation.

Current County Engineer's ties do not indicate that corner is monumented.

Corner Recovery =
Searched an area visually, with a magnetic locator and a tile probe at record distances west from fence intersections shown on the 1988 survey and found an old RR tie corner post (leaning NW'ly). Since there are no available County records indicating monumentation of corner and fence corner is the best available evidence of corner location, set a $\frac{3}{4}$ " x 4.0' aluminum capped iron rod (#14677), 0.9' exposed on the Southeast side of said RR tie corner post in-line with fencelines north, east and west. All ties are plumb distance.

This certificate is being prepared because there are no certificates on file for this corner.

W $\frac{1}{4}$ Corner



W $\frac{1}{4}$ Corner - History of Corner =
Current County Engineer's ties do not indicate that corner is monumented.

Corner Recovery =
Searched area around a 3 way fence intersection with a magnetic locator and tile probe. Excavated a 1.5' x 1.5' deep hole around a new wood corner post and found wood fibers and very old fence wire on the east side of post. Also found a rotted off round corner post tied with fence wire to a rotten RR tie corner post south of new corner post, if the fence connecting the two rotten corner posts is stretched tight the base of the rotted round post would have been on very near the new corner post. Therefore since there are no available County records indicating monumentation of Corner and fenceline evidence is the best available evidence of the Corner location, set a $\frac{3}{4}$ " x 4.0' aluminum capped iron rod (#14677), 0.4' exposed on the east side of said new corner post through very old fence wire and wood fibers. Monument set is in-line with fences south, east and west. All ties are plumb distance.

This certificate is being prepared because there are no certificates on file for this corner.

Legend

BP = Iron Nail with Bottle Cap	ID = Inside Diameter	R/W = Iron ROW Nail
CP = Corner Post	OD = Outside Diameter	SFP = Steel 'T' Post
CMP = Corrugated Metal Pipe	PP = Power Pole	SW = Iron Nail with Square Metal Washer
CM = 4" Sq Concrete Monument with $\frac{1}{2}$ " ϕ iron rod in center (tie to rod)	PW = Iron Nail with Plastic Washer	TP = Telephone Pedestal
CX = Cut 'X'	RCP = Reinforced Concrete Pipe	TW = Iron Nail with Round Metal Washer
GP = Gate Post	RH = Red Head (Iron Nail in wire)	WFP = Wood Fence Post
IR = $\frac{3}{8}$ " x 2.0' Iron Rod	RW = Iron Nail with Reflective Round Washer	X = Iron "X" Nails
	ROW = Right of Way	