

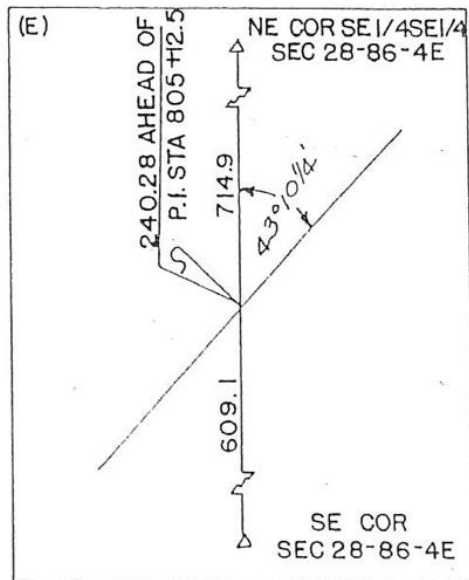
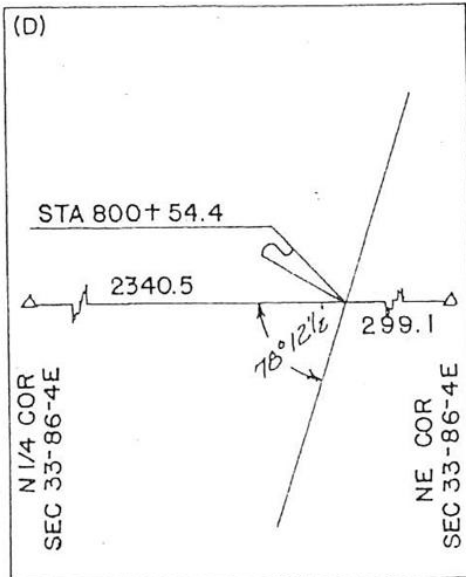
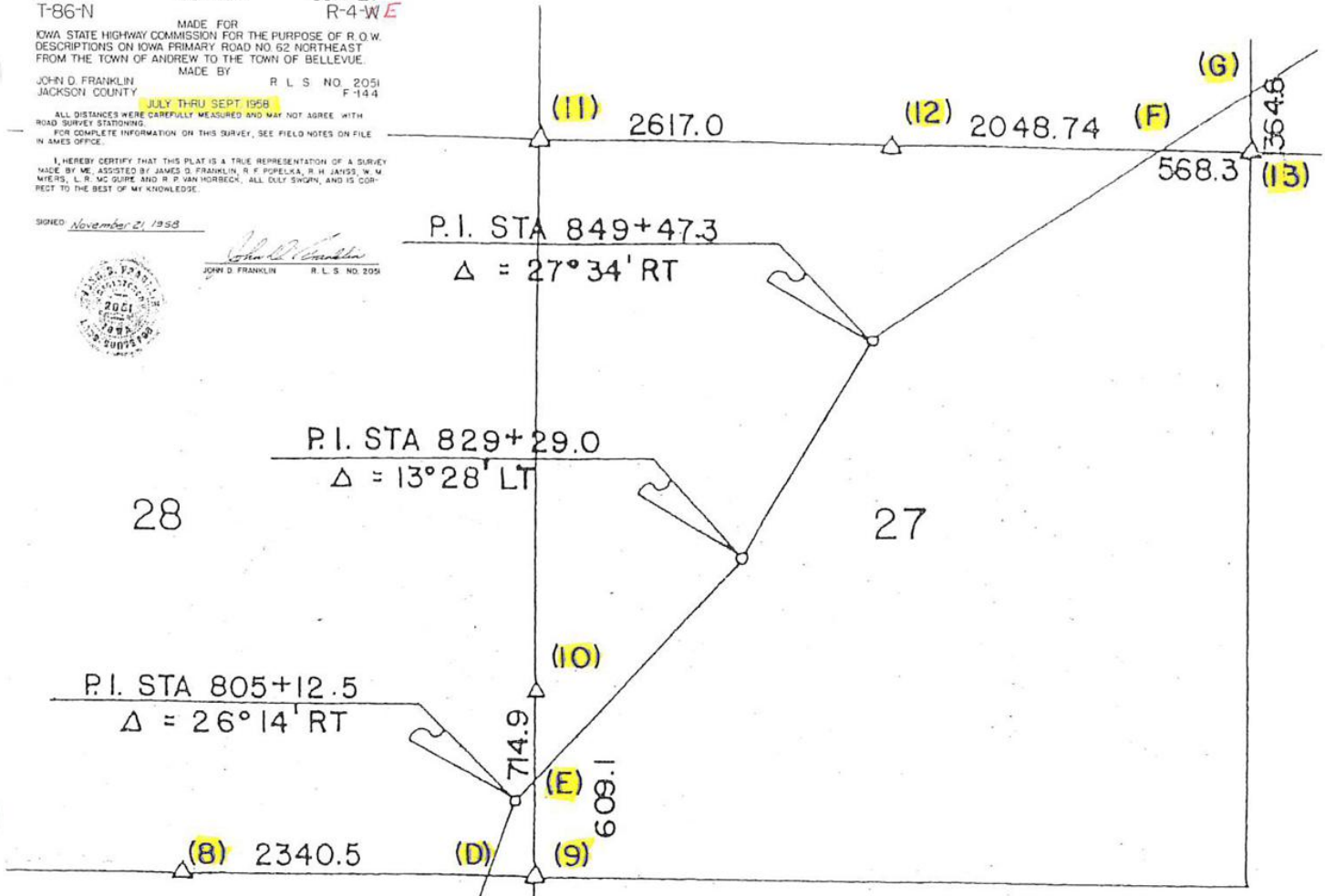
Sec. 27

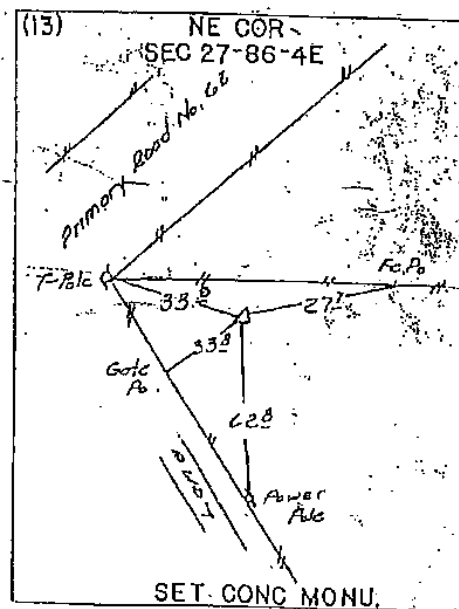
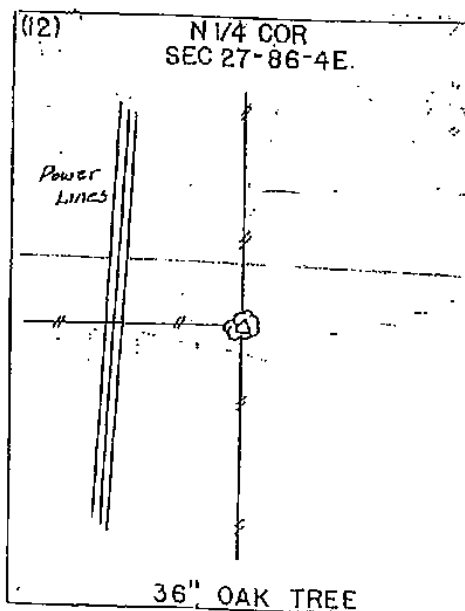
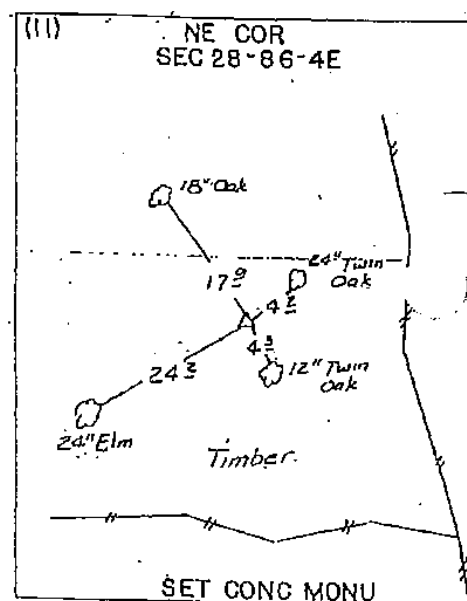
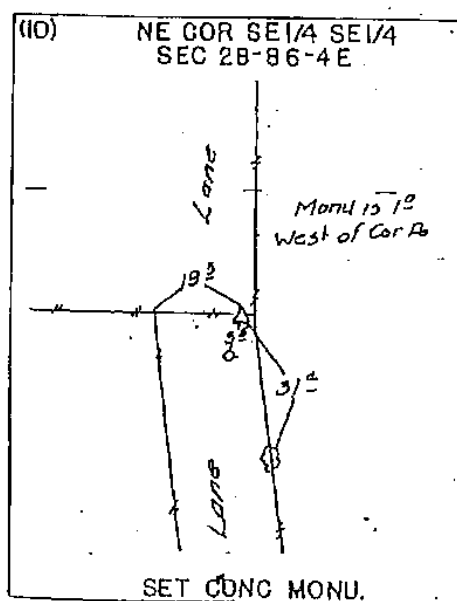
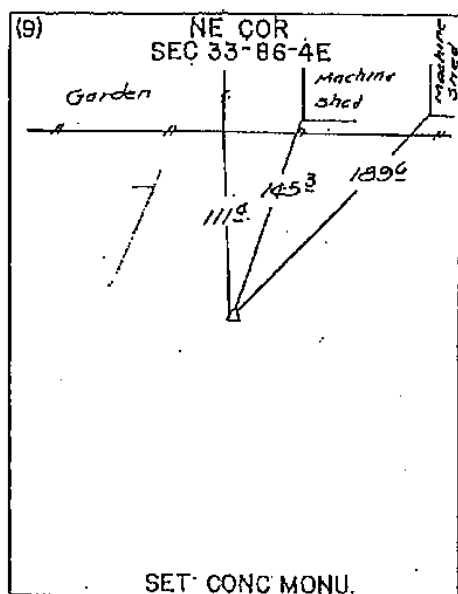
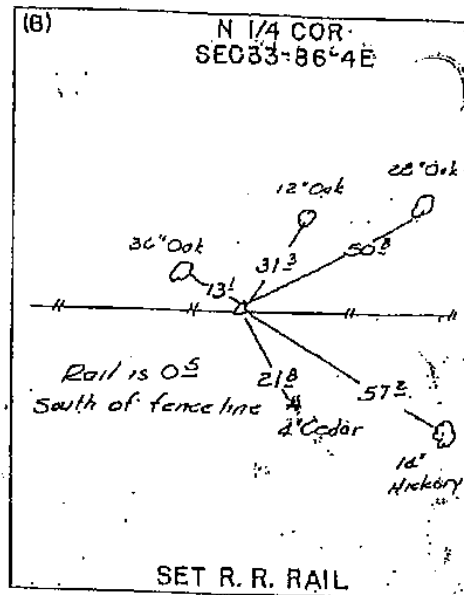
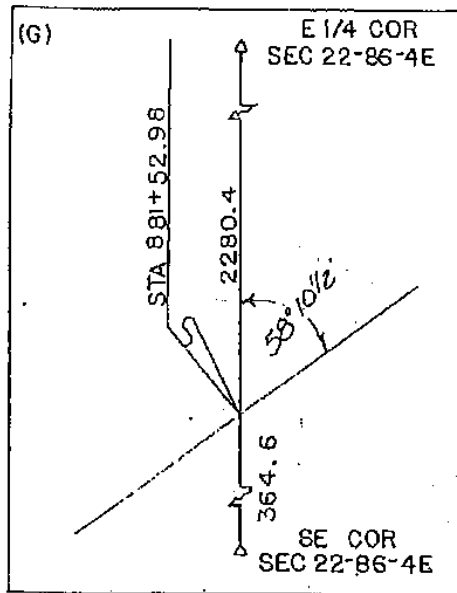
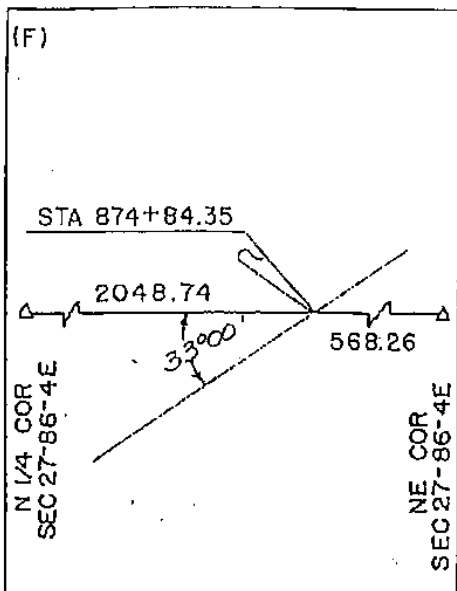
LAND T-86-N CORNER SURVEY R-4-W E
 MADE FOR IOWA STATE HIGHWAY COMMISSION FOR THE PURPOSE OF R.O.W. DESCRIPTIONS ON IOWA PRIMARY ROAD NO. 62 NORTHEAST FROM THE TOWN OF ANDREW TO THE TOWN OF BELLEVUE.
 MADE BY JOHN D. FRANKLIN R.L.S. NO. 2051 F-144
 JACKSON COUNTY JULY THRU SEPT 1958
 ALL DISTANCES WERE CAREFULLY MEASURED AND MAY NOT AGREE WITH ROAD SURVEY STATIONING.
 FOR COMPLETE INFORMATION ON THIS SURVEY, SEE FIELD NOTES ON FILE IN AMES OFFICE.
 I HEREBY CERTIFY THAT THIS PLAT IS A TRUE REPRESENTATION OF A SURVEY MADE BY ME, ASSISTED BY JAMES G. FRANKLIN, R.F. POPELKA, R.H. JAYSS, W.M. WEERS, L.R. MC GUIRE AND R.P. VAN HORNECK. ALL DULY SIGNED, AND IS CORRECT TO THE BEST OF MY KNOWLEDGE.

SIGNED November 21, 1958



JOHN D. FRANKLIN R.L.S. NO. 2051





01 MAY 24 AM 10:26

PHYLLIS M. GERLACH
JACKSON COUNTY, IOWA
RECORDER

Prepared by Thomas G. Tucker, L.S., 3851 Eagle Hts., Clinton, IA 52732 (319-242-5392) Fee 6.00

SLS19-94

UNITED STATES PUBLIC LAND SURVEY CORNER CERTIFICATE

OF

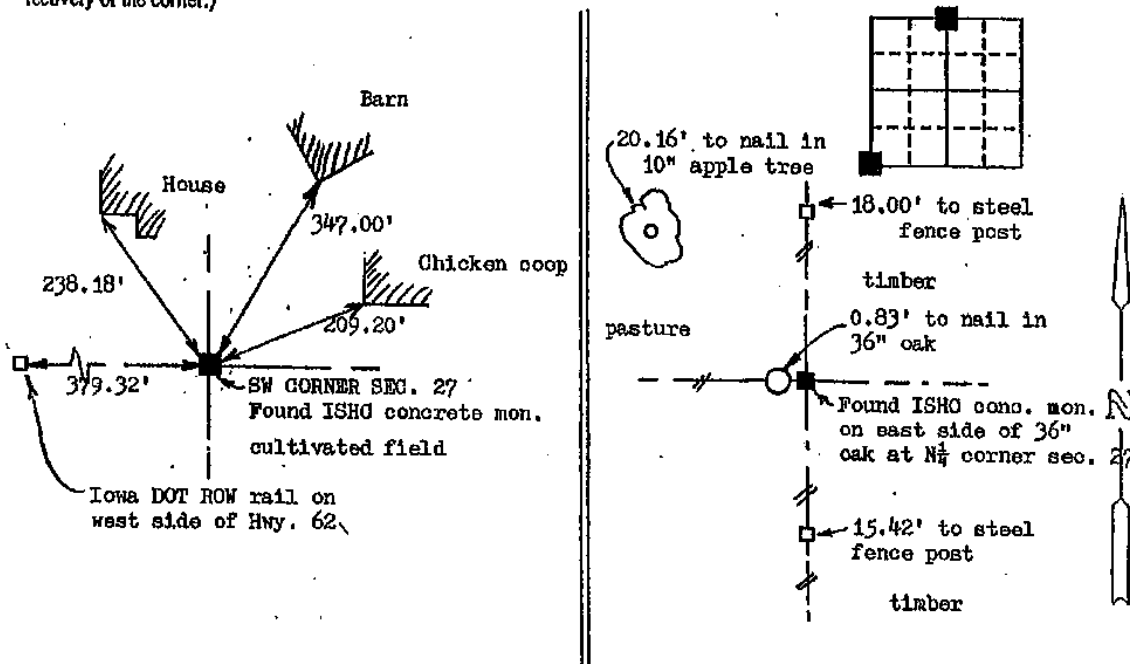
Land Survey Monuments situated in Section 27, Township 86 N, Range 4E, of the Fifth Principal Meridian, JACKSON County, Iowa.
Previously recorded in: NA in County Recorder's Office.
(book, page, document number, etc.)

(Show reason for preparing this certificate, the evidence and detailed procedures used in establishing the corner positions and monumentation found or placed.)

Monument Description and Remarks: SW CORNER: Found ISHO concrete monument as per ISHO records. This is in a cultivated field and no nearby references could be established.
The old ISHO references are now gone. Referenced out as shown. Monument was only about 2" below surface. NORTH QUARTER (N $\frac{1}{4}$) CORNER: Found ISHO concrete monument as per ISHO records. No references given on the ISHO cornerstone plat. Referenced out as shown. This monument is basically fastened to the 36" oak.

PLAN - VIEW

(Show a minimum of three reference ties to durable physical objects, relevant monuments and physical conditions that will enable recovery of the corner.)



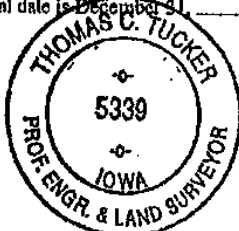
I hereby certify that the survey work was completed and this land surveying document was prepared by me or under my direct personal supervision and that I am a duly registered land surveyor under the laws of the state of Iowa

Signature: Thomas G. Tucker
Name typed or printed: Thomas G. Tucker

Date: 5/22/01 Reg. No. 5339

My registration renewal date is December 31, 2001

SEAL



Corners	List Corners to be Indexed	Section	Twp	Range
SW, N $\frac{1}{4}$		27	86N	4E

Document 06-3577

Book 2 Page 479 Type 15 001 Pages 1
Date 9/15/2006 Time 2:09 PM
Rec Amt \$7.00

ARLENE SCHAUF, RECORDER
JACKSON COUNTY IOWA

Prepared by: SCHNEIDER Land Surveying and Planning, Inc. P.O. Box 128 Farley, Iowa 52046 563-744-3631

UNITED STATES PUBLIC LAND SURVEY CORNER CERTIFICATE OF

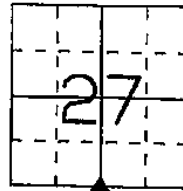
Land Survey Monuments situated in Section 27, Township 86 North, Range 4 East
of the Fifth Principal Meridian, Jackson County, Iowa.
Previously recorded (NONE OF RECORD)

(Show reason for preparing this certificate, the evidence and detailed procedures used in establishing the corner positions and monumentation found or placed.)

Monument Description and Remarks: THE 31/4 CORNER OF SECTION 27, T86N, R4E WAS ESTABLISHED AT THE MIDPOINT OF A LINE FROM THE SW CORNER TO THE SE CORNER OF SAID SECTION 27.

PLAN - VIEW

(Show a minimum of three reference ties to durable physical objects, relevant monuments and physical conditions that will enable recovery of the corner.)



S1/4 CORNER
SEC. 27, T86N, R4E
SET 1/2" REBAR
W/ YELLOW CAP
#14417



SET 'X'
NAILS IN
4" CEDAR



27.63'

18.65'



SET 'X'
NAILS IN
6" CEDAR

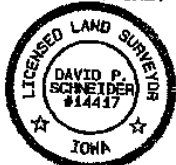


SET 'X'
NAILS IN
8" CEDAR

I hereby certify that this land surveying document was prepared and the related survey work was performed by me or under my direct personal supervision and that I am a duly licensed Land Surveyor under the laws of the State of Iowa.

David P. Schneider P.L.S. #14417 Date: 8/23/2006
My license renewal date is December 31, 2007.
P. sheets covered by this seal: THIS SHEET ONLY

SCHNEIDER
Land Surveying & Planning, Inc.
P.O. Box 128 Farley, Iowa 52046
Ph. #563-744-3631 Fax #563-744-3629



List Corners to be Indexed

Corners	Section	Twp	Range
S1/4	27	86N	4E

Book 2 Page 479 JOB NO. 933



Document 11-4847

Book 3 Page 26 Type 15 001 Pages 2

Date 12/09/2011 Time 2:12 PM

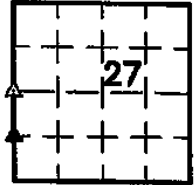
Rec Amt \$12.00

ARLENE SCHAUF, RECORDER/REGISTRAR
JACKSON COUNTY IOWA

Scott A. Steinfadt PLS, Ryken Engineering, 711 Park Avenue, Oaklay, Iowa 50601 - Ph. 841-847-3273 - Fax 841-847-2805

UNITED STATES PUBLIC LAND SURVEY CORNER CERTIFICATE

Land Survey Monuments situated in Section 27, Township 86 North,
Range 4 East, of the Fifth Principal Meridian, Jackson County, Iowa,
Previously recorded in Not Applicable in County Recorder's Office



These corners were used for a survey in this section for Tom Scheckel. Bats of bearing for this corner certificate can be found on the associated plat of survey filed in the County Recorder's Office for this section.

Legend

BC = Nail with Bottle Cap

BP = Brass Post

CP = Corner Post

CMP = Corrugated Metal Pipe

CM = 4" Sq Concrete Monument with

1/2" iron rod in center (tie to rerod)

CX = Cut 'X'

GP = Gate Post

ID = Inside Diameter

OD = Outside Diameter

PP = Power Pole

PW = Nail with Plastic Washer

RCP = Reinforced Concrete Pipe

RH = Red Head (Nail in fence wire)

RW = Right of Way

RW = Nail with Reflective Round Washer

R/W = Iron ROW Rod

SFP = Steel 'T' Post

SW = Nail with Square Metal Washer

TP = Telephone Pedestal

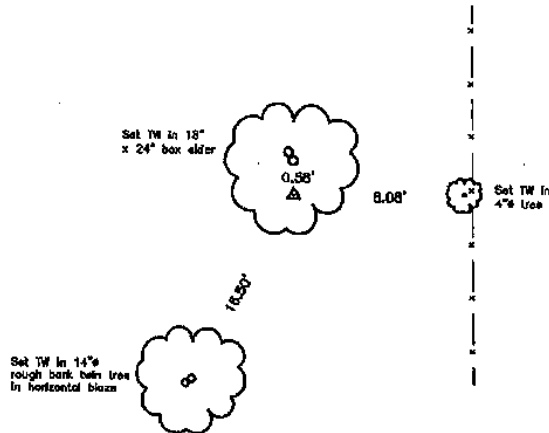
TW = Nail with Round Metal Washer

WFP = Wood Fence Post

X = X Nails



W $\frac{1}{4}$ Corner



Monument Description, Remarks, and Plan View:

W $\frac{1}{4}$ Corner - History of Corner =

Previous and current County Engineer's ties do not indicate that corner is monumented.

Corner Recovery =

Calculated a position online with the SW Corner and the NW Corner of the SW $\frac{1}{4}$ SW $\frac{1}{4}$ and double the distances North of said Corners. Searched a 20' area around said calculated position with a magnetic locator and found no monumentation. Since there are no available county records indicating monumentation of corner and there is no physical evidence indicating corner position, set a MAG nail in 3" wide x 6" deep tree root at said calculated position and used it as the correct corner. Nail is 0.1' deep and 9.5'± West of fence line North-South. All ties are plumb distances.

This certificate is being prepared because there are no certificates on file for this corner.



I hereby certify that this land surveying document was prepared and the related survey work was performed by me or under my direct personal supervision and that I am a duly licensed Land Surveyor under the laws of the State of Iowa.

Scott A. Steinfadt, PLS

SCOTT A. STEINFADT, PLS

Date: 10/27/2011 License number: 14677

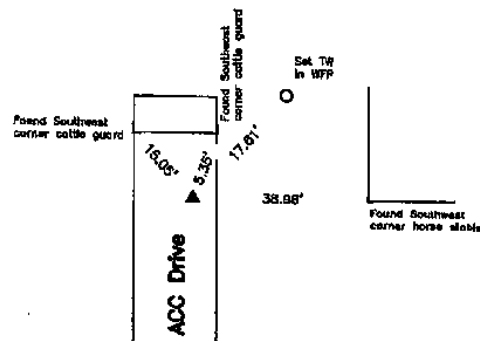
My license renewal date is December 31, 2012

Pages or sheets covered by this seal: 1 & 2

List Corners to be Indexed

Corners	Section	Twp	Range
W $\frac{1}{4}$ Corner	27	T86N	R4E
NW Cor. SW $\frac{1}{4}$ SW $\frac{1}{4}$	27	T86N	R4E

NW Corner SW¼ SW¼



Monument Description, Remarks, and Plan View:

NW Corner SW¼ SW¼ - History of Corner =

- 1958, Nov. 21 - "SET CONC MONU" per Co. Recorder's Book 1 Page 5.
- 1996, Jan. 12 - "Reset Brass D.O.Y. Monument with magnet" per Iowa DOT District 6 F-144 Field Book 1 Page 63.
- 1996, Jan. 24 - "SEARCHED FOR, NOT FOUND, SET BRASS PLUG MON" per unrecorded corner certificate obtained from IDOT District 6 District Land Surveyors Office.
- 1998, Sep. 2, 3- "SET BRASS PLUG (PLUG)" per IDOT Excess R.O.W. Plats obtained from IDOT District 6 District Land Surveyors Office.

Previous and current County Engineer's ties do not indicate that corner is monumented.

Corner Recovery =

Searched a 10' area near cattle guard with a magnetic locator and found a 1" brass disk stamped "IDOT SEC COR", flush, 6"± Easterly of centerline of ACC drive Northerly-Southerly. Location of monument found matches that of record, monument found matches that of record and record Iowa DOT ties are within reason. Therefore, used disk as the correct corner. All ties are plumb distance.

This certificate is being prepared because there are no recorded certificates on file for this corner.

Legend

BC = Nail with Bottle Cap	ID = Inside Diameter	R/W = Iron ROW Rail
BP = Brass Post	OD = Outside Diameter	SFP = Steel T Post
CP = Corner Post	PP = Power Pole	SW = Nail with Square Metal Washer
CMP = Corrugated Metal Pipe	PLW = Nail with Plastic Washer	TP = Telephone Pedestal
CM = 4" Sq Concrete Monument with	RCP = Reinforced Concrete Pipe	TW = Nail with Round Metal Washer
1/2" Iron rod in center (tie to rod)	RH = Rod Head (Nail in fence wire)	WFP = Wood Fence Post
CX = Cut 'X'	ROW = Right of Way	X = X Nails
GP = Gate Post	RW = Nail with Reflective Round Washer	

Document 13-4716

Book 3 Page 117 Type 15 001 Pages 1
Date 11/18/2013 Time 2:48 PM
Rec Amt \$7.00

ARLENE SCHAUF, RECORDER/REGISTRAR
JACKSON COUNTY IOWA

Prepared by Wm. Burger Land Surveyor 510 3rd Street West Court, Northampton, Iowa Phone 663 - 865 2028

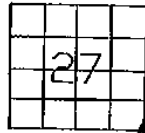
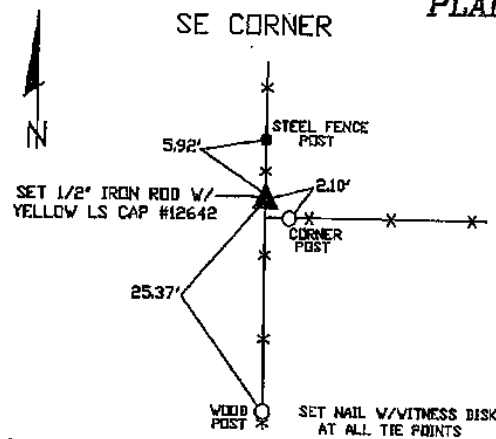
UNITED STATES PUBLIC LAND SURVEY CORNER CERTIFICATE

Land Survey Monuments situated in Section 27, Township 86N, Range 4E, of the Fifth Principal Meridian, Jackson County, Iowa. Previously recorded in N/A in the Office of the County Recorder

Monument Description and Remarks: (No Corner Certificates found at the County Recorders Office)

SE CORNER - SET 1/2" IRON ROD W/YELLOW LS CAP #12642 - EXTENDED LINE TO EAST FROM FOUND
SW CORNER AND FOUND S1/4 CORNER AND DOUBLED DISTANCE OVER, LOCATION FIT WITH EXISTING CORNER POST

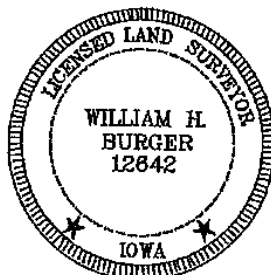
PLAN VIEW



SEC. 27 TWP. 86N RANGE 4E

CORNERS TO BE INDEXED

SE CORNER 27 86N 4E



I hereby certify that this land surveying document was prepared and related survey work was performed by me or under my direct personal supervision and that I am a duly licensed Land Surveyor under the laws of the State of Iowa.

William H. Burger
William H. Burger Date
License number 12642

My license renewal date is December 31, 2014
Pages or Sheets covered by this seal Sheet 1 of 1

Document 20-1545

Type 15 001 Pages 1
Date 4/30/2020 Time 8:33 AM
Rec Amt \$7.00

ARLENE SCHAUF, RECORDER/REGISTRAR
JACKSON COUNTY IOWA

PREPARED BY: MICHAEL J. WEBER, WEBER SURVEYING, LLC, 26789 46TH AVE, BERNARD, IA 52032 (563) 879-4173

UNITED STATES PUBLIC LAND SURVEY CORNER CERTIFICATE OF

LAND SURVEY MONUMENTS SITUATED IN SECTION 27, TOWNSHIP 86 NORTH, RANGE 4 EAST
OF THE FIFTH PRINCIPAL MERIDIAN, JACKSON COUNTY, IOWA.
PREVIOUSLY RECORDED BOOK 1 PAGE 476, DOC NO. 01-2003
(book, page, document number, etc.)

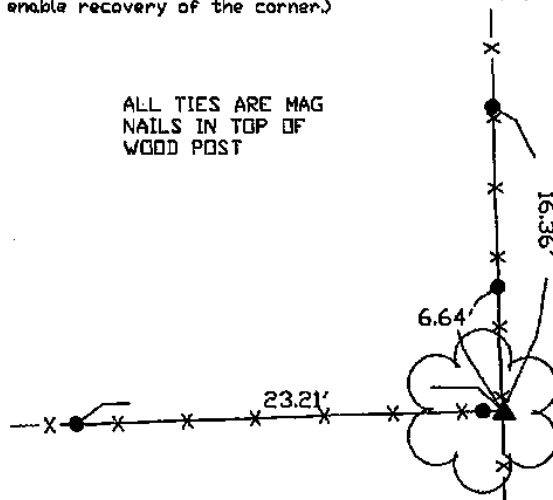
(Show reason for preparing this certificate, the evidence and detailed procedures used in establishing the corner positions and monumentation found or placed.)

Monument Description and Remarks:

-NORTH 1/4 COR. SEC. 27, T.86N. R.4E. FOUND CONCRETE MONUMENT. ESTABLISHED NEW TIES.

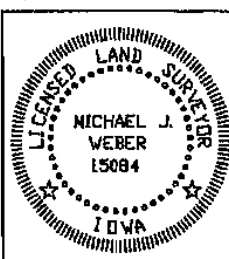
PLAN - VIEW

(Show a minimum of three reference ties to durable physical objects, relevant monuments and physical conditions that will enable recovery of the corner.)



NORTH 1/4 COR. SEC. 27, T.86N. R.4E. OF
THE 5TH P.M. FOUND CONCRETE MONUMENT
IN FENCE LINE 3' +/- ABOVE GROUND
AGAINST A 42" DIA OAK TREE. THIS TREE
APPEARS TO BE THE SAME TREE CALLED
OUT IN PLAT BOOK 1 PAGE 5 LAND CORNER
SURVEY

DWG: 20053-SCHECKEL



I HEREBY CERTIFY THAT THIS LAND SURVEYING DOCUMENT WAS
PREPARED AND THE RELATED SURVEY WORK WAS PERFORMED BY ME OR
UNDER MY DIRECT PERSONAL SUPERVISION AND THAT I AM A DULY
LICENSED LAND SURVEYOR UNDER THE LAWS OF THE STATE OF IOWA.

Michael J. Weber April 29, 2020
MICHAEL J. WEBER (DATE)
LICENSE NUMBER 15084

MY LICENSE RENEWAL DATE IS DECEMBER 31, 2021

SHEETS COVERED BY THIS SEAL: *Thir sheet*

List Corners to be Indexed
Corner Sec Twp Range
NORTH 1/4 COR. 27-86N-4E