

Sec. 24

LAND T-86-N
 CORNER
 SURVEY R-4-NE
 MADE FOR
 IOWA STATE HIGHWAY COMMISSION FOR THE PURPOSE OF R.O.W.
 DESCRIPTIONS ON IOWA PRIMARY ROAD NO. 62 NORTHEAST
 FROM THE TOWN OF ANDREW TO THE TOWN OF BELLEVUE.
 MADE BY
 JOHN D. FRANKLIN R. L. S. NO. 2051
 JACKSON COUNTY F-144
 JULY THRU SEPT. 1958

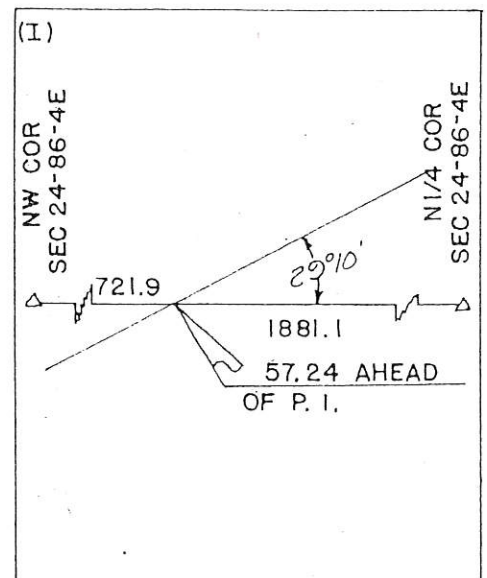
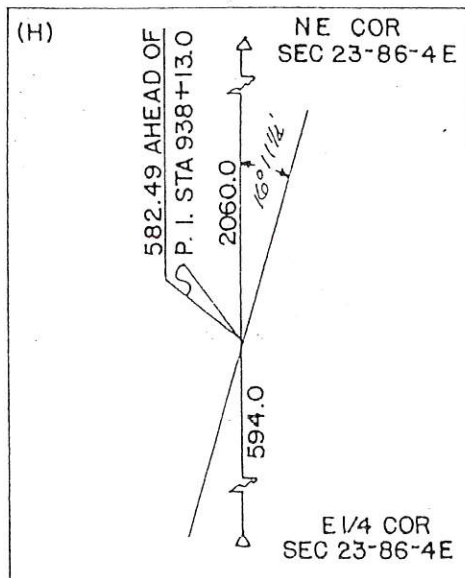
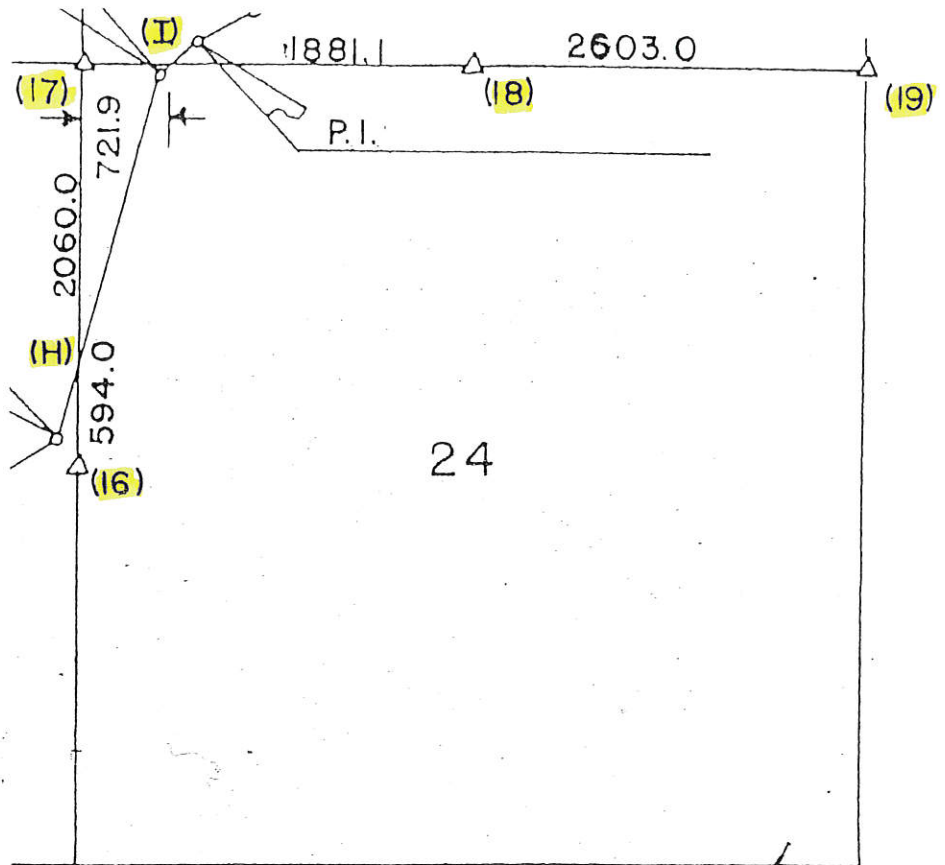
ALL DISTANCES WERE CAREFULLY MEASURED AND MAY NOT AGREE WITH
 ROAD SURVEY STATIONING.
 FOR COMPLETE INFORMATION ON THIS SURVEY, SEE FIELD NOTES ON FILE
 IN AMES OFFICE.

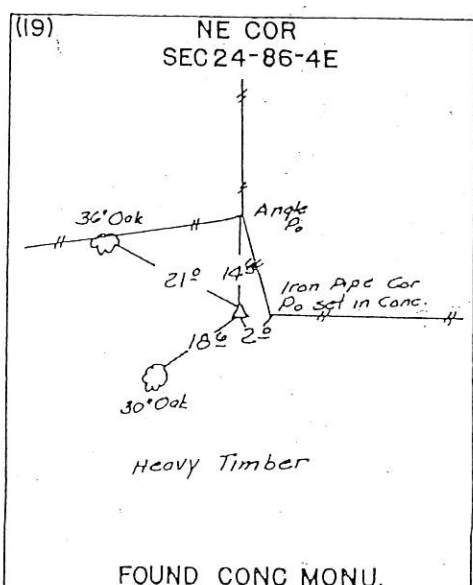
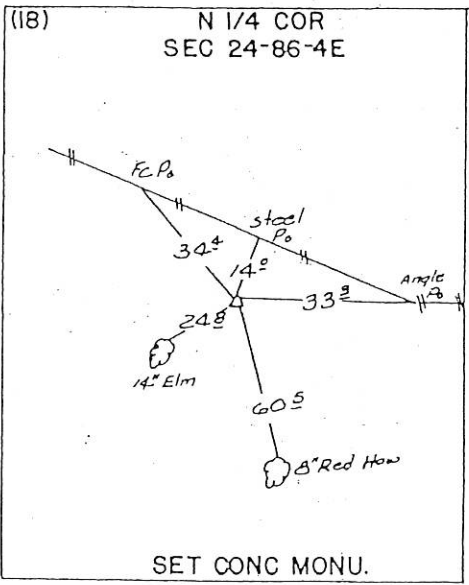
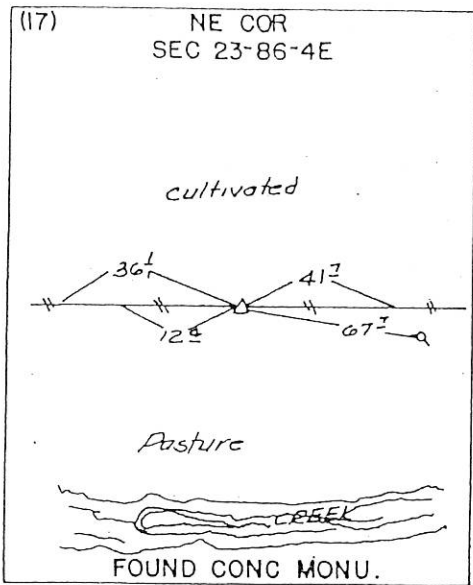
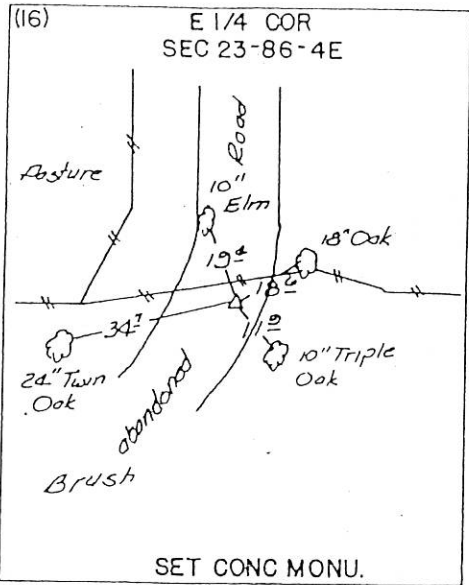
I HEREBY CERTIFY THAT THIS PLAT IS A TRUE REPRESENTATION OF A SURVEY
 MADE BY ME, ASSISTED BY JAMES D. FRANKLIN, R. F. POPELKA, R. H. JANSSE, W. M.
 MYERS, L. R. MC GUIRE AND R. P. VAN HORBECK, ALL DULY SWORN, AND IS COR-
 RECT TO THE BEST OF MY KNOWLEDGE.

SIGNED November 21, 1958



John D. Franklin
 JOHN D. FRANKLIN R. L. S. NO. 2051





LAND SURVEY MONUMENTS SITUATED IN SECTION 24, TOWNSHIP 86 NORTH, RANGE 4 EAST, OF THE 5TH PRINCIPAL MERIDIAN JACKSON COUNTY IOWA.
PREVIOUSLY RECORDED IN DOES NOT APPLY IN COUNTY RECORDER'S OFFICE.

(Show reason for preparing this certificate, the evidence and detailed procedures used in establishing the corner positions and monumentation found or placed.)

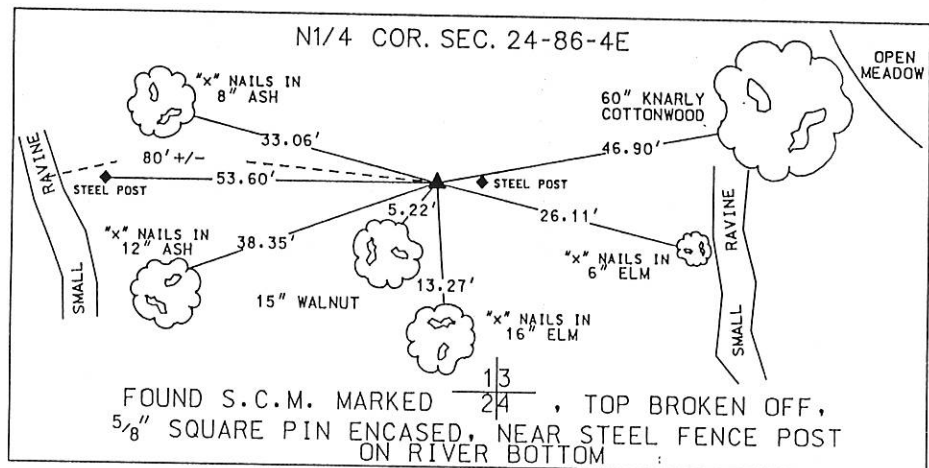
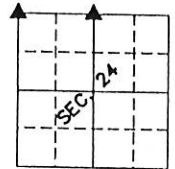
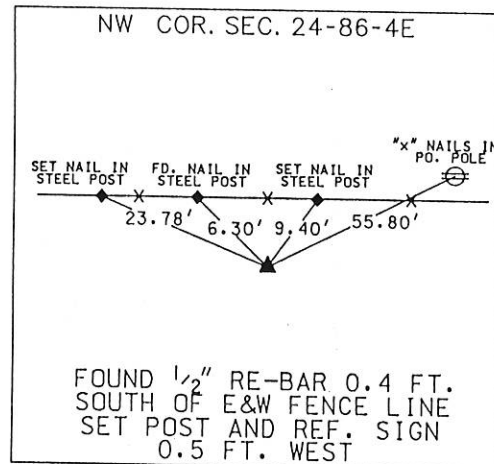
MONUMENT DESCRIPTION AND REMARKS:

RE-REFERENCE CORNERS FOR RIGHT OF WAY STAKING AND AFFIDAVIT INFORMATION

PLAN - VIEW

(Show a minimum of three reference ties to durable physical objects, relevant monuments and physical conditions that will enable recovery of the corner.)

FILE NO. 0521
BOOK L PAGE 94
1992 AUG 20 PM 12:50
SHIRLEY RITENOUR
JACKSON COUNTY, IOWA
RECORDER
See S. 10



I hereby certify that the survey work was completed and this certificate was prepared by me or under my direct personal supervision and that I am a duly registered land surveyor under the laws of the state of Iowa. My registration expires December 31, 1992.

Signature:

DENNIS R. KUNZE

Date: August 20/1992 Reg. No. 10679



LAND CORNERS TO BE RECORDED			
Corners	Section	Twp.	Range
NW	24	86	4E
N1/4	24	86	4E

UNITED STATES PUBLIC LAND SURVEY CORNER CERTIFICATE
OF

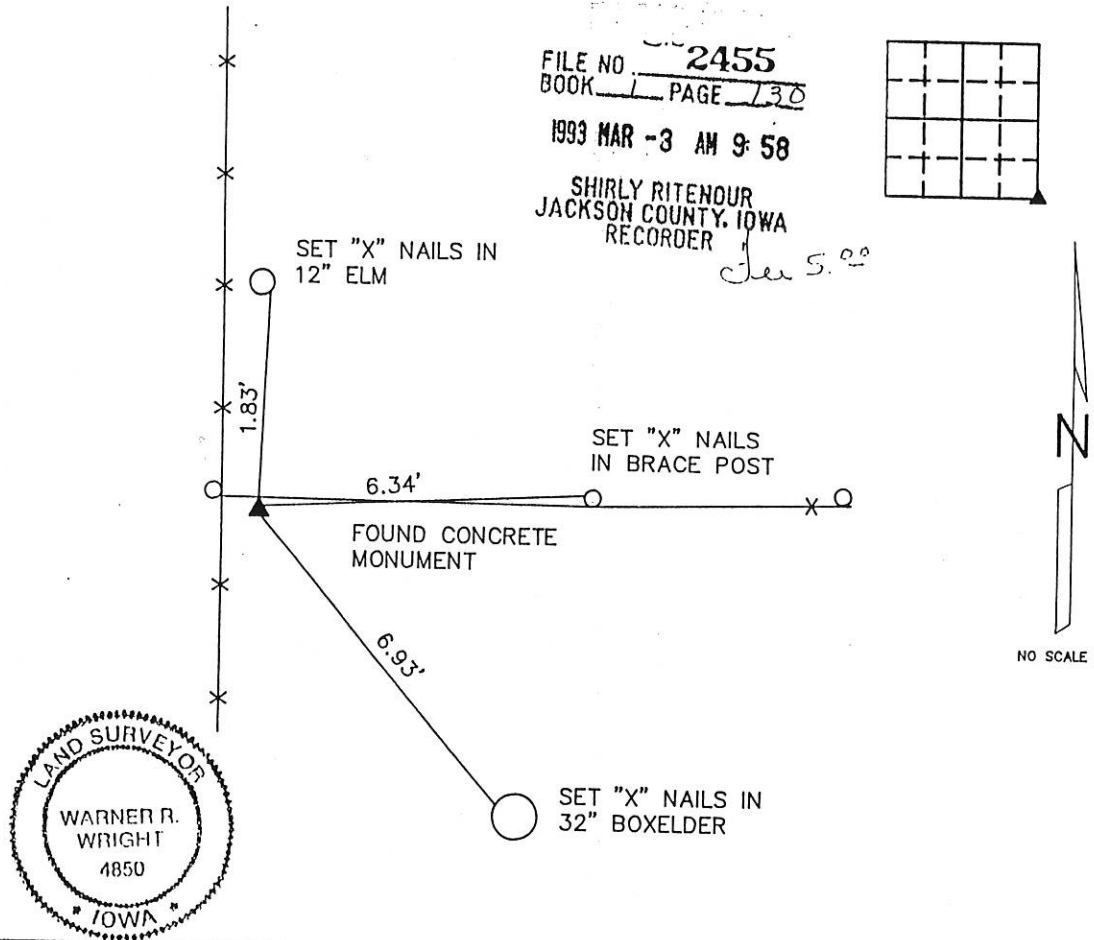
LAND SURVEY MONUMENTS SITUATED IN SECTION 24, TOWNSHIP 86 NORTH, RANGE 4 EAST
OF THE FIFTH PRINCIPAL MERIDIAN, _____ COUNTY, IOWA.
PREVIOUSLY RECORDED IN _____ IN COUNTY RECORDER'S OFFICE.

(Show reason for preparing this certificate, the evidence and detailed procedures used in establishing the corner positions and monumentation found or placed.)

Monument Description and Remarks: FOUND CONCRETE MONUMENT STAMPED $\pm 2 \pm 61$. THE
NUMBERS WERE IN THE PROPER POSITION, BUT UPSIDE DOWN. THE MONUMENT APPROX
1' ABOVE GROUND AND TIPPED TO THE EAST.

PLAN - VIEW

(Show a minimum of three reference ties to durable physical objects, relevant monuments and physical conditions that will enable recovery of the corner.)



I HEREBY CERTIFY THAT THE SURVEY WORK WAS COMPLETED AND THIS CERTIFICATE
WAS PREPARED BY ME OR UNDER MY DIRECT PERSONAL SUPERVISION AND THAT
I AM A DULY REGISTERED LAND SURVEYOR UNDER THE LAWS OF THE STATE OF IOWA.

Warner R. Wright
NAME: WARNER R. WRIGHT REG. NO. 4850
DATE: 2-3-93

LIST CORNERS TO BE INDEXED

CORNERS SECTION TWP RANGE
SE 24 86 N 4 E

 3210 ST. JOSEPH DR DUBUQUE, IA 52001 319556-2464 302 S. RIVER PARK DR GUTTENBERG, IA 52052 319252-3823 P.O. BOX 275 GALENA, ILL 61036 815777-0359	IIW ENGINEERS & SURVEYORS P.C.		MONUMENT RECORD	
	COUNTY: <u>JACKSON</u>	TOWNSHIP: <u>BELLEVUE</u>	DATE: 1/7/93 REVISED:	FIELD BOOK NO. 336 PROJ. NO. 927222 INDEX NO.

UNITED STATES PUBLIC LAND SURVEY CORNER CERTIFICATE OF

LAND SURVEY MONUMENTS SITUATED IN SECTION 24, TOWNSHIP 86 NORTH, RANGE 4 EAST
OF THE FIFTH PRINCIPAL MERIDIAN, JACKSON COUNTY, IOWA.
PREVIOUSLY RECORDED IN _____ IN COUNTY RECORDER'S OFFICE.

(Show reason for preparing this certificate, the evidence and detailed procedures used in establishing the corner positions and monumentation found or placed.)

Monument Description and Remarks: SET No. 5 REROD USING A PLAT BY THORNE FOR WAYNE
BUDDE RECORDER FILE 1 D-86

PLAN - VIEW

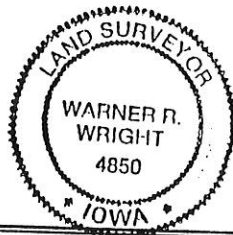
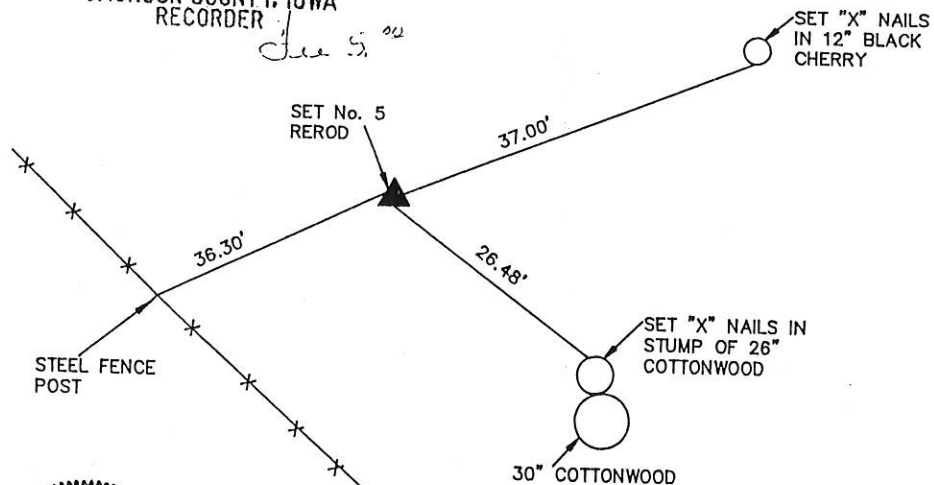
(Show a minimum of three reference ties to durable physical objects, relevant monuments and physical conditions that will enable recovery of the corner.)

FILE NO. 2456
BOOK 1 PAGE 131

1993 MAR -3 AM 9:58

SHIRLY RITENOUR
JACKSON COUNTY, IOWA
RECORDER

See 5. 02



I HEREBY CERTIFY THAT THE SURVEY WORK WAS COMPLETED AND THIS CERTIFICATE
WAS PREPARED BY ME OR UNDER MY DIRECT PERSONAL SUPERVISION AND THAT
I AM A DULY REGISTERED LAND SURVEYOR UNDER THE LAWS OF THE STATE OF IOWA.

Warner R. Wright
NAME: WARNER R. WRIGHT REG. NO. 4850

DATE: 2-3-93

LIST CORNERS TO BE INDEXED

CORNERS	SECTION	TWP	RANGE
E 1/4	24	86 N	4 E

		IIW ENGINEERS & SURVEYORS P.C.		MONUMENT RECORD	
3210 ST. JOSEPH DR DUBUQUE, IA 52001 319556-2464		COUNTY: <u>JACKSON</u>		TOWNSHIP: <u>BELLEVUE</u>	
302 S. RIVER PARK DR GUTTENBERG, IA 52052 319252-3823		DATE: <u>1/7/93</u>		FIELD BOOK NO. <u>336</u>	
P.O. BOX 275 GALENA, ILL. 61036 815777-0359		REVISED:		PROJ. NO. <u>927222</u>	
				INDEX NO.	

FILE NO. **97 805**
BOOK 1 PAGE 311

1997 MAR 27 PM 12:52

SHIRLY RITENOUR *Feb 6⁰²*
JACKSON COUNTY, IOWA
RECORDER
Telephone: 556-4389

Prepare's Name: John L. White

Address: 1212 Locust St. Dubuque, IA

SLSI 9-94

UNITED STATES PUBLIC LAND SURVEY CORNER CERTIFICATE

OF

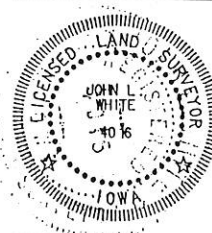
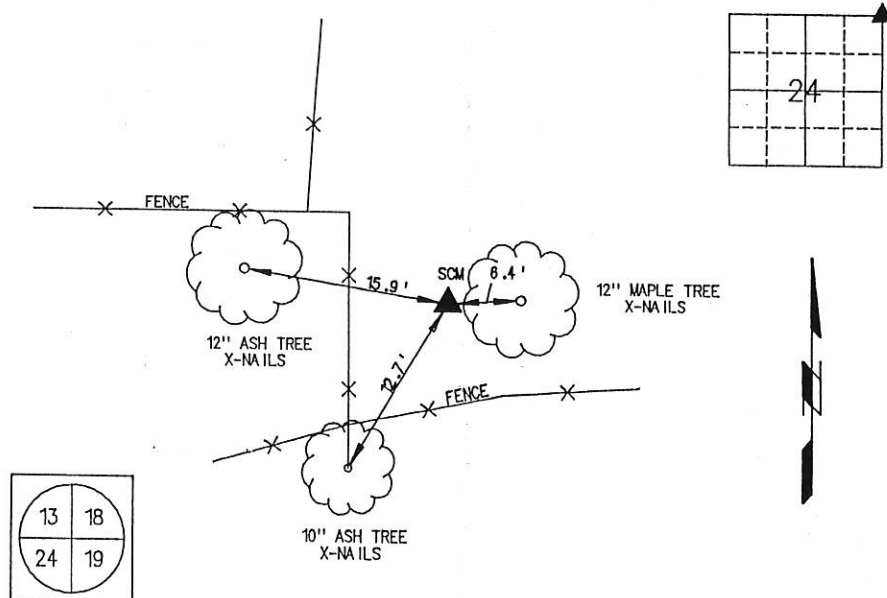
Land Survey Monuments situated in Section 24, Township 86, Range 4E, of the Fifth Principal Meridian, JACKSON County, Iowa.
Previously recorded in _____ in County Recorder's Office.
(book, page, document number, etc.)

(Show reason for preparing this certificate, the evidence and detailed procedures used in establishing the corner positions and monumentation found or placed.)

Monument Description and Remarks: FOUND STANDARD CONCRETE MONUMENT (SCM)
NE CORNER, SECTION 24. EXPOSED 3"

PLAN - VIEW

(Show a minimum of three reference ties to durable physical objects, relevant monuments and physical conditions that will enable recovery of the corner.)



I HEREBY CERTIFY THAT THIS LAND SURVEYING DOCUMENT WAS PREPARED AND THE RELATED SURVEY WORK WAS PERFORMED BY ME OR UNDER MY DIRECT PERSONAL SUPERVISION AND THAT I AM A DULY LICENSED LAND SURVEYOR UNDER THE LAWS OF THE STATE OF IOWA.

John L. White 18 March 1997
JOHN L. WHITE (DATE)

LICENSE NUMBER 4018

MY LICENSE RENEWAL DATE IS DECEMBER 31, 1998

Corners	List Corners to be Indexed	Section	Twp	Range
NE	24	86	4E	

BUESING & ASSOCIATES
CONSULTING ENGINEERS
1212 LOCUST STREET
DUBUQUE, IOWA 52001
(319) 556-4389

MONUMENT RECORD
COUNTY: JACKSON
TOWNSHIP: BELLEVUE (WEST PART)

DATE PLOTTED: 3-13-97
DATE REVISED:

FIELD BOOK # 152
PAGE # 72

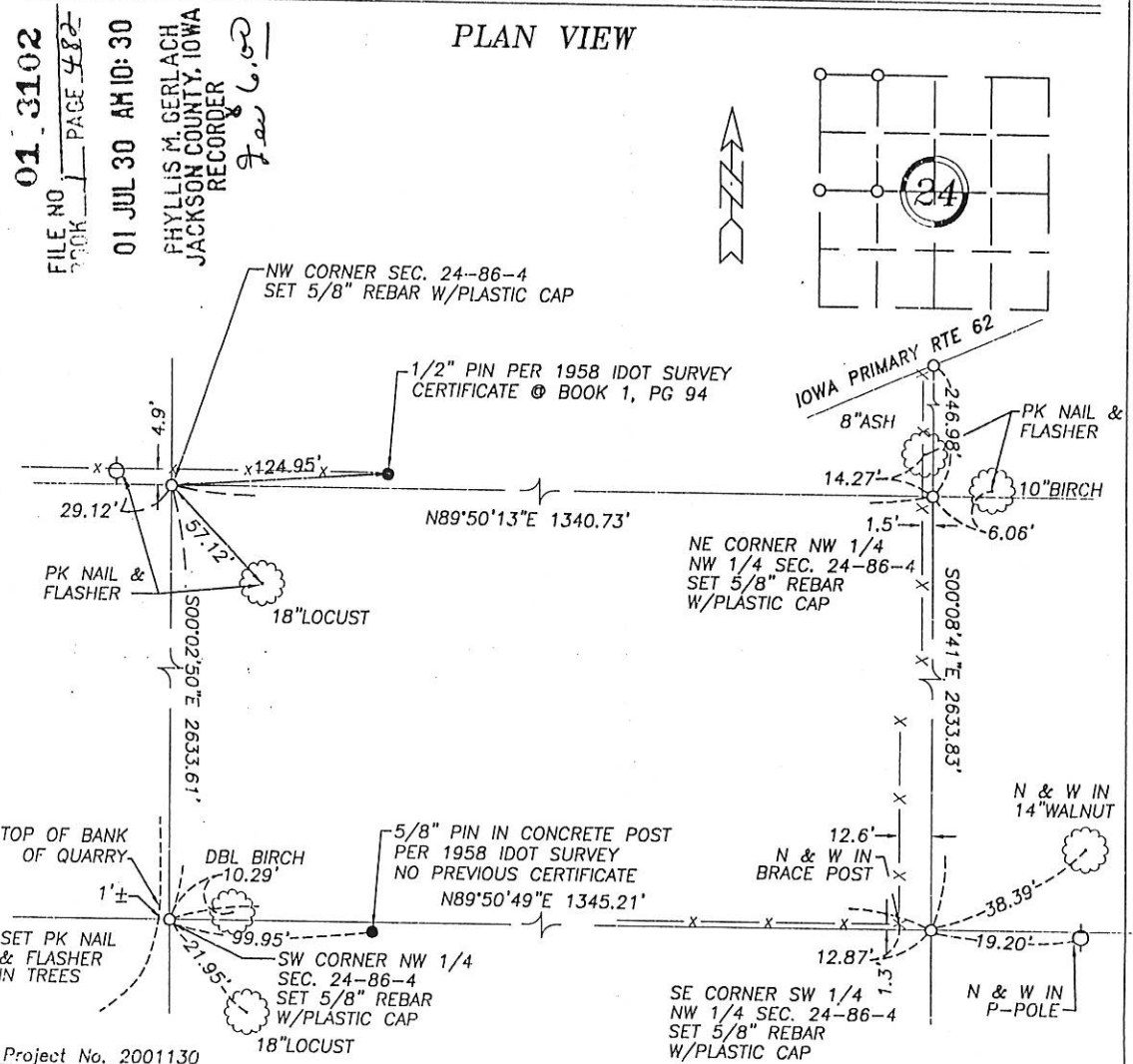
DRAWING
96024-05

UNITED STATES PUBLIC LAND SURVEY CORNER CERTIFICATE OF

Land Survey Monuments in Section 24 in Township 86 North (T86N), Range 4 East (R4E) of the Fifth Principal Meridian (5th PM), Jackson County, Iowa. (Note Previously Recorded)

Monuments were placed at the Northwest corner, the Northeast Corner of the Northwest Quarter (NW 1/4) of the Northwest Quarter (NW 1/4), the Southwest corner of the Northwest Quarter (NW 1/4) and the Southeast corner of the Southwest Quarter (SW 1/4) of the Northwest Quarter (NW 12/4) of Section 24.

Corner locations were established at prorata locations using existing monuments, fences and occupation lines within this and adjoining Sections. Existing monuments placed during a 1958 Survey by the IDOT were found to be placed in error, as noted. (IDOT concurs)



I hereby certify that the survey work was completed and this land surveying document was prepared by me or under my direct personal supervision and that I am a duly registered land surveyor under the laws of the State of Iowa.

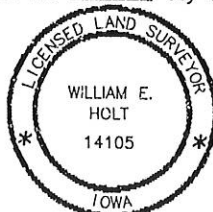
Signature: William E. Holt

William E. Holt

Iowa Registration No. 14105

My Registration Expires on December 31, 2002

Dated this 15th day of July, 2001 C.E.



Corners to be Indexed

Corner	Section	Township	Range
NW Corner			
NW 1/4	24	86N	4E
NE Corner			
NW 1/4 NW 1/4	24	86N	4E
SE Corner			
SW 1/4 NW 1/4	24	86N	4E
SW Corner			
NW 1/4	24	86N	4E

UNITED STATES PUBLIC LAND SURVEY CORNER CERTIFICATE OF

Land Survey Monuments in Section 24 in Township 86 North (T86N), Range 4 East (R4E) of the Fifth Principal Meridian (5th PM), Jackson County, Iowa. (Note Previously Recorded)

Monuments were placed at the Northwest corner, the Northeast Corner of the Northwest Quarter (NW 1/4) of the Northwest Quarter (NW 1/4), the Southwest corner of the Northwest Quarter (NW 1/4) and the Southeast corner of the Southwest Quarter (SW 1/4) of the Northwest Quarter (NW 12/4) of Section 24.

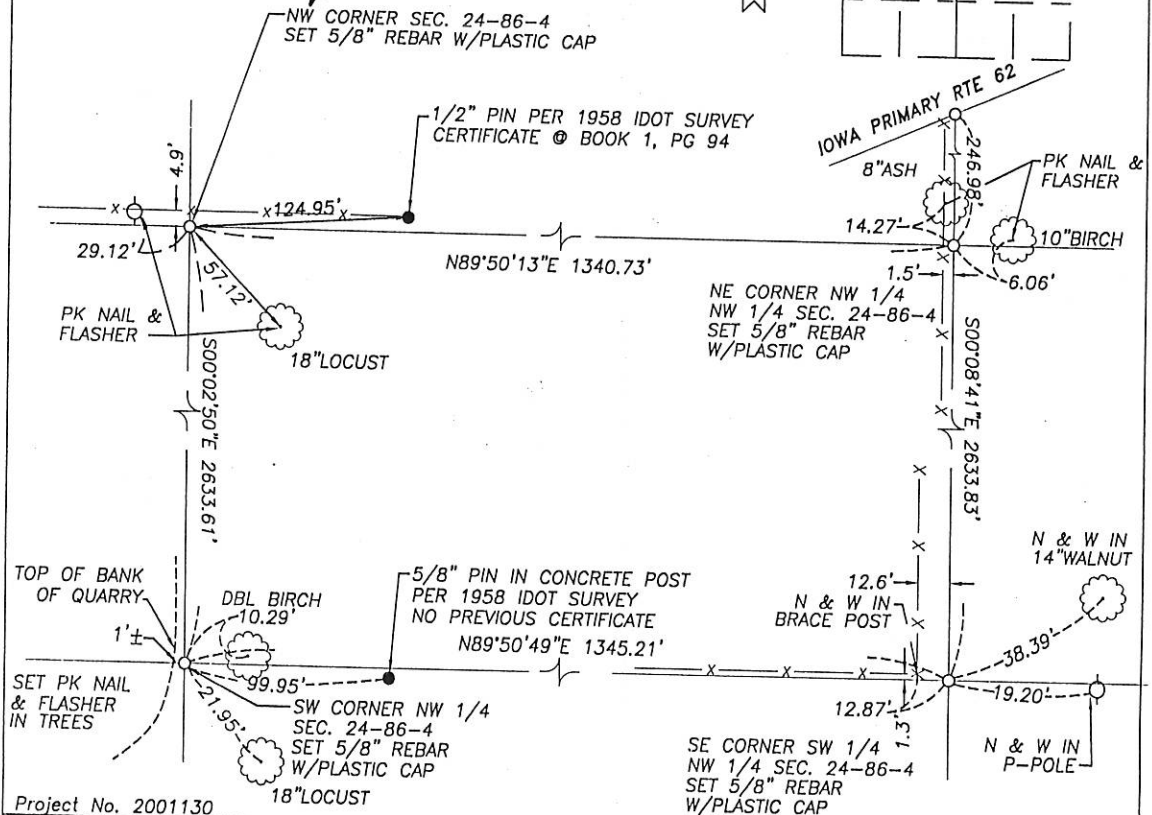
Corner locations were established at prorata locations using existing monuments, fences and occupation lines within this and adjoining Sections. Existing monuments placed during a 1958 Survey by the IDOT were found to be placed in error, as noted. (IDOT concurs)

FILE NO. **02 0754**
BOOK **1** PAGE **557**

PLAN VIEW

02 FEB 11 PM 1:21

PHYLLIS M. GERLACH
JACKSON COUNTY, IOWA
RECORDER *fee 6.00*



Project No. 2001130

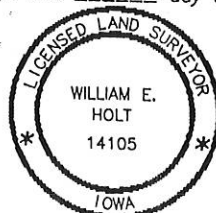
I hereby certify that the survey work was completed and this land surveying document was prepared by me or under my direct personal supervision and that I am a duly registered land surveyor under the laws of the State of Iowa.

Signature: *William E. Holt*

William E. Holt
Iowa Registration No. 14105

My Registration Renews on December 31, 2002

Dated this 25th day of July, 2001 C.E.



Corners to be Indexed

Corner	Section	Township	Range
NW Corner NW 1/4	24	86N	4E
NE Corner NW 1/4 NW 1/4	24	86N	4E
SE Corner SW 1/4 NW 1/4	24	86N	4E
SW Corner NW 1/4	24	86N	4E



Document 07-471

Book 2 Page 532 Type 15 001 Pages 1

Date 2/02/2007 Time 2:04 PM

Rec Amt \$7.00

ARLENE SCHAUF, RECORDER
JACKSON COUNTY IOWA

Preparer's Name: Paul C. Brashaw Address: 4413 West Stagecoach Trail Galena, Ill. Telephone: 777-1172

SLSI 9-94

UNITED STATES PUBLIC LAND SURVEY CORNER CERTIFICATE

OF

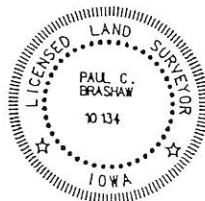
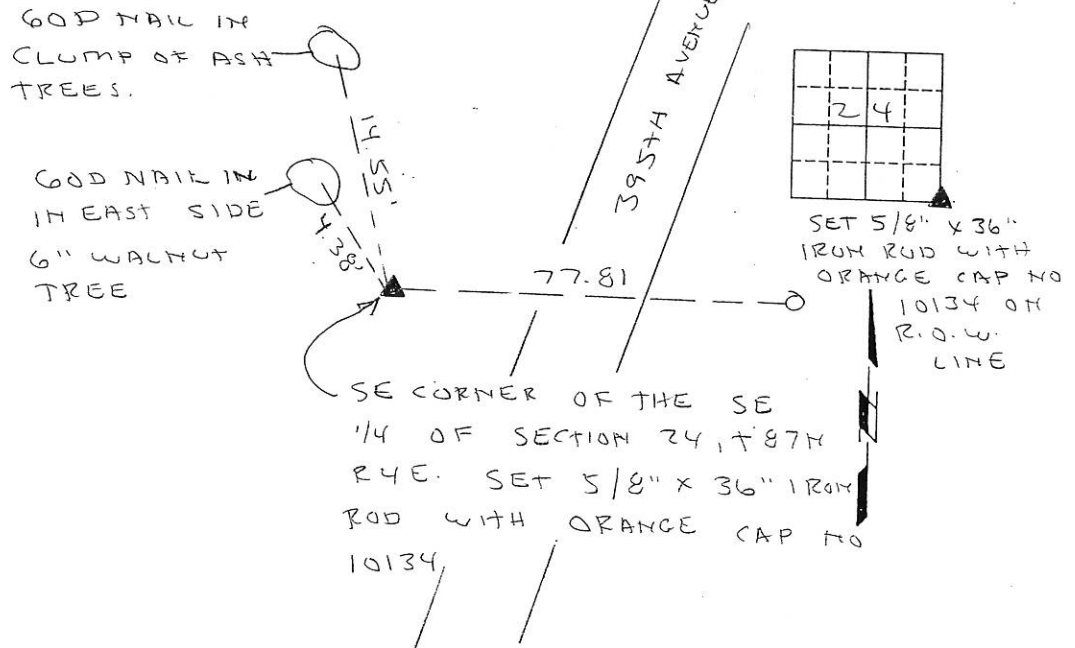
Land Survey Monuments situated in Section 24, Township 87N, Range 4E, of the Fifth Principal Meridian, Jackson County, Iowa.
Previously recorded in Book 2, Page 438 in County Recorder's Office.
(book, page, document number, etc.)

(Show reason for preparing this certificate, the evidence and detailed procedures used in establishing the corner positions and monumentation found or placed.)

Monument Description and Remarks: SE CORNER OF THE SE 1/4 OF SECTION 24, T87N, R4E SET 5/8" X 36" IRON ROD WITH ORANGE CAP NO. 10134. ESTABLISHED BY RETRACING CORNER LOCATION AS SHOWN ON PLAT OF SMITH SIDING SUBD. RECORDED IN PLAT BOOK 1, PAGE 59

PLAN - VIEW

(Show a minimum of three reference ties to durable physical objects, relevant monuments and physical conditions that will enable recovery of the corner.)



I HEREBY CERTIFY THAT THIS LAND SURVEYING DOCUMENT WAS PREPARED AND THE RELATED SURVEY WORK WAS PERFORMED BY ME OR UNDER MY DIRECT PERSONAL SUPERVISION AND THAT I AM A DULY LICENSED LAND SURVEYOR UNDER THE LAWS OF THE STATE OF IOWA.

Paul C. Brashaw Feb 2, 2007
PAUL C. BRASHAW (DATE)

LICENSE NUMBER 10134

MY LICENSE RENEWAL DATE IS DECEMBER 31, 2008

List Corners to be Indexed
Corners Section Top Range
SE COR 24 T86N R4E

MONUMENT RECORD		
COUNTY: JACKSON		
TOWNSHIP: TETE DES MORTS		
DATE PLOTTED:	FIELD BOOK #	DRAWING
DATE REVISED:	PAGE #	#

Book 2 Page 532