

LAND  
T-86-N

CORNER

SURVEY  
R-4-WE

MADE FOR  
IOWA STATE HIGHWAY COMMISSION FOR THE PURPOSE OF R.O.W.  
DESCRIPTIONS ON IOWA PRIMARY ROAD NO. 62 NORTHEAST  
FROM THE TOWN OF ANDREW TO THE TOWN OF BELLEVUE.

MADE BY  
JOHN D. FRANKLIN  
JACKSON COUNTY  
R.L.S. NO. 2051  
F. 144

JULY THRU SEPT. 1958

ALL DISTANCES WERE CAREFULLY MEASURED AND MAY NOT AGREE WITH  
ROAD SURVEY STATIONING  
FOR COMPLETE INFORMATION ON THIS SURVEY, SEE FIELD NOTES ON FILE  
IN AMES OFFICE.

I HEREBY CERTIFY THAT THIS PLAT IS A TRUE REPRESENTATION OF A SURVEY  
MADE BY ME, ASSISTED BY JAMES D. FRANKLIN, R. F. POPELKA, R. H. JANSSE, W. M.  
MYERS, L. R. MC GURR AND R. P. VAN HORNECK, ALL DUTY SWORN, AND IS COR-  
RECT TO THE BEST OF MY KNOWLEDGE.

SIGNED: November 21, 1958



*John D. Franklin*  
JOHN D. FRANKLIN  
R. L. S. NO. 2051

5 points

22

2645.0

(15)

(14)

P.I. STA 988+13.0

$\Delta = 42^\circ 16' \text{ LT}$

23

P.I. STA 888+89.0

$\Delta = 20^\circ 50' \text{ RT}$

2280.4

(G)

2048.74

(F)

568.3

(13)

(17)

2060.0

(H)

(16)

721.9

594.0

P.I. STA 911+23.1

$\Delta = 19^\circ 56' \text{ LT}$

(F)

STA 874+84.35

2048.74

$33^\circ 00'$

568.26

N 1/4 COR  
SEC 27-86-4E

NE COR  
SEC 27-86-4E

(G)

E 1/4 COR  
SEC 22-86-4E

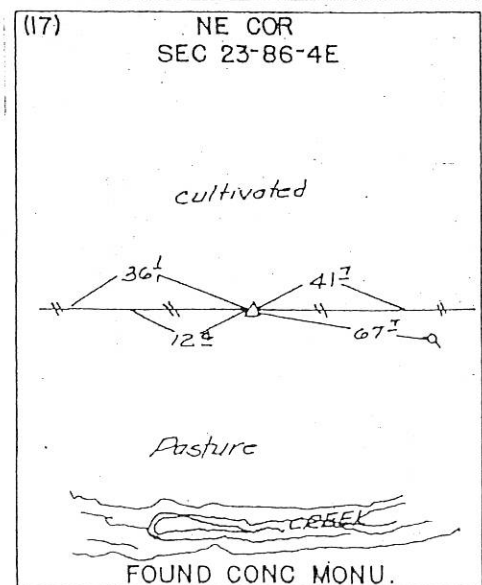
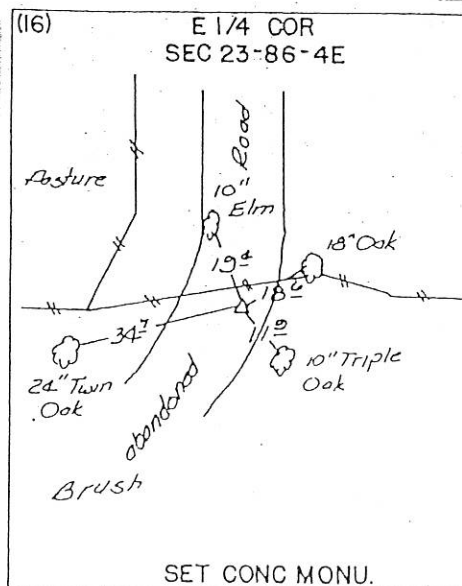
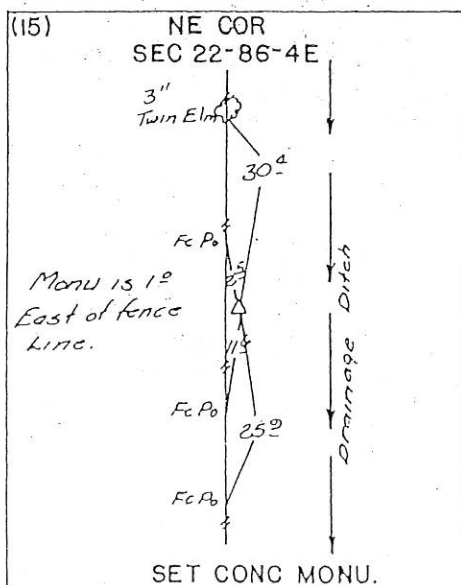
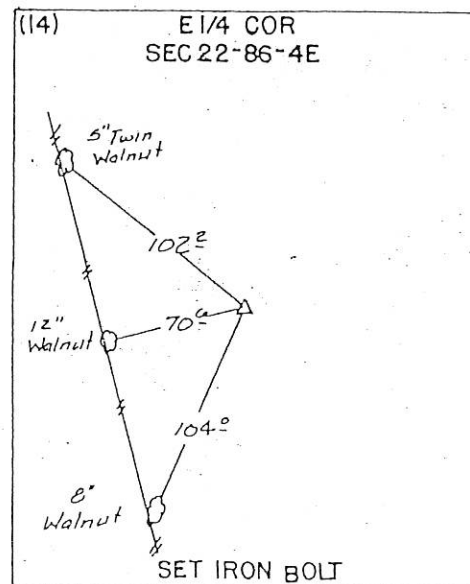
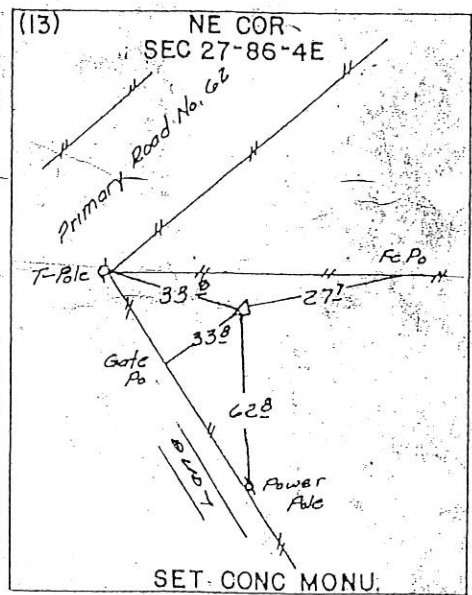
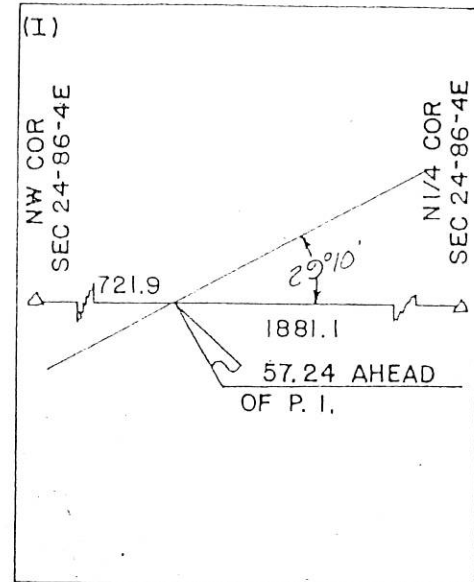
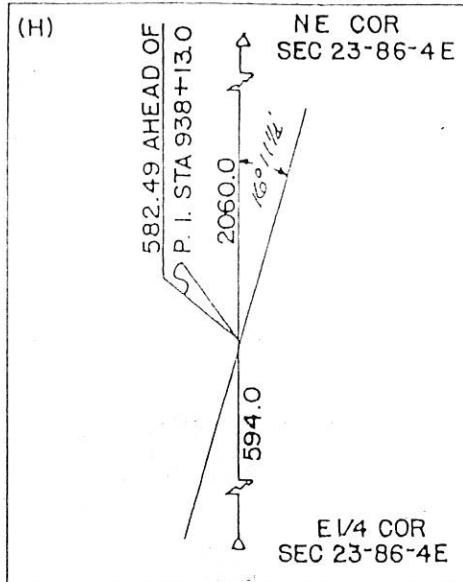
STA 881+52.98

2280.4

$58^\circ 10' 12''$

364.6

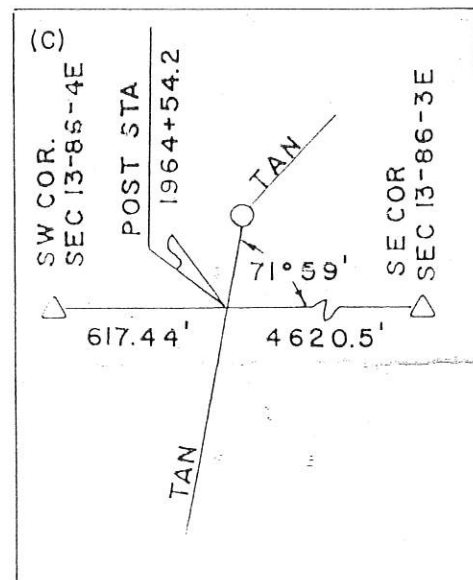
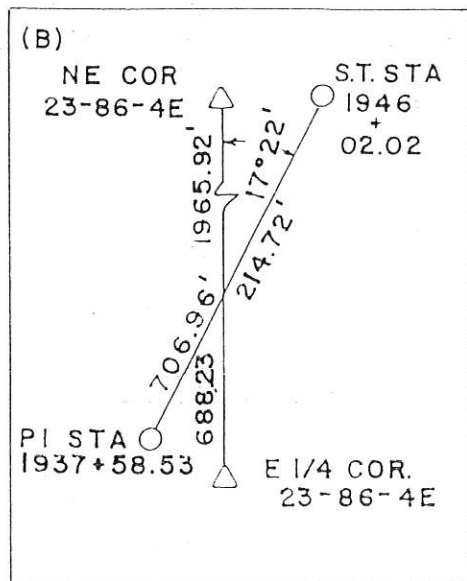
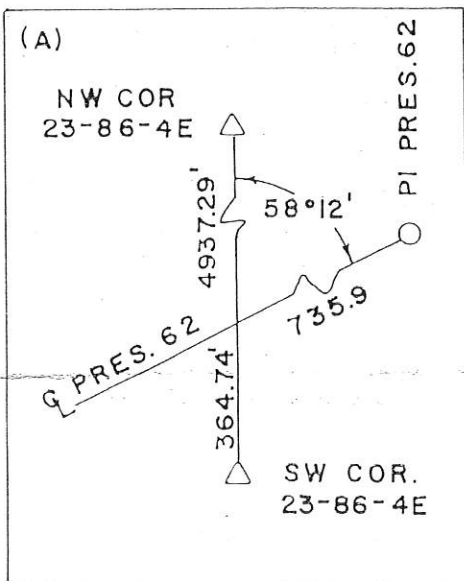
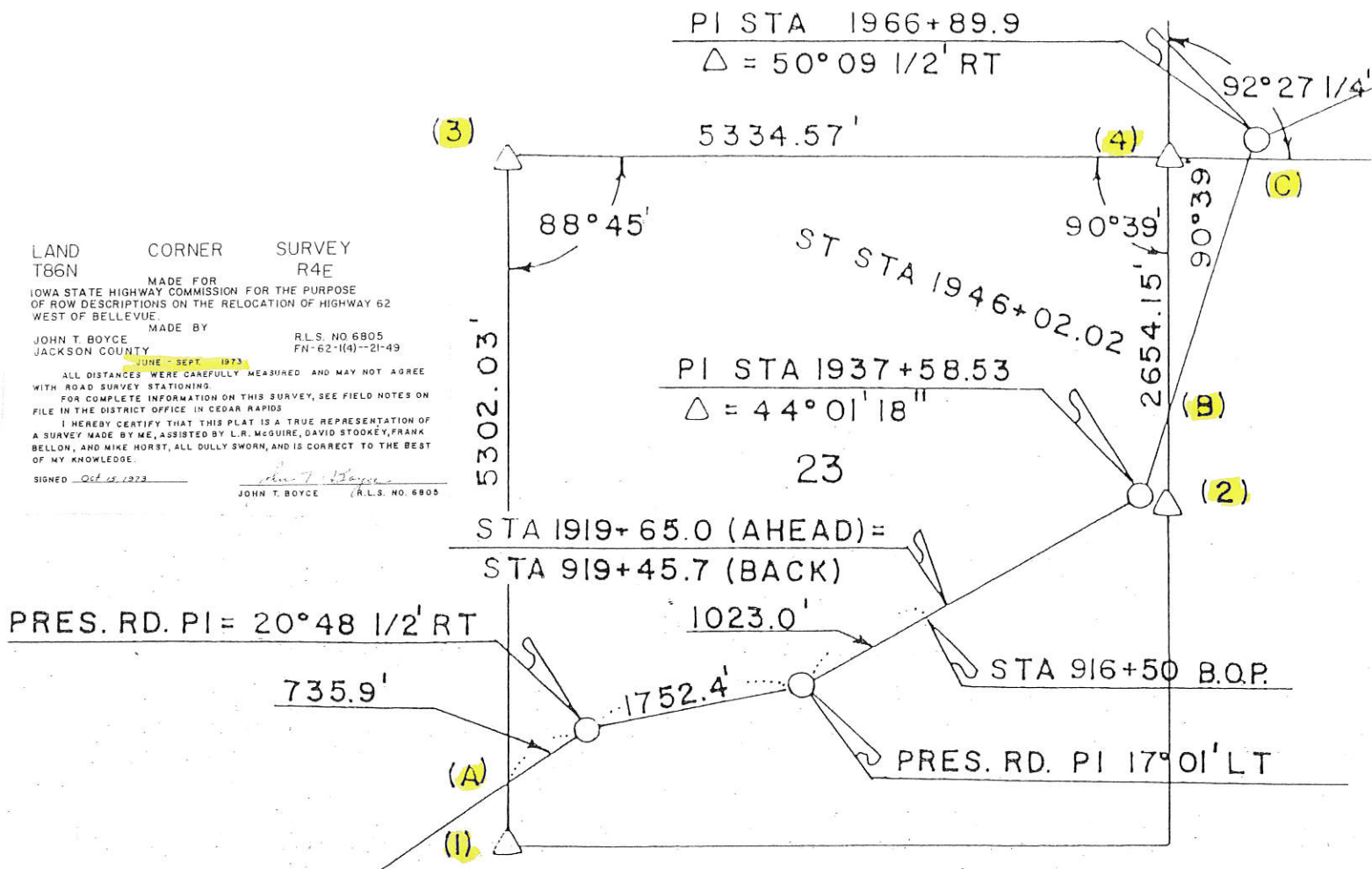
SE COR  
SEC 22-86-4E

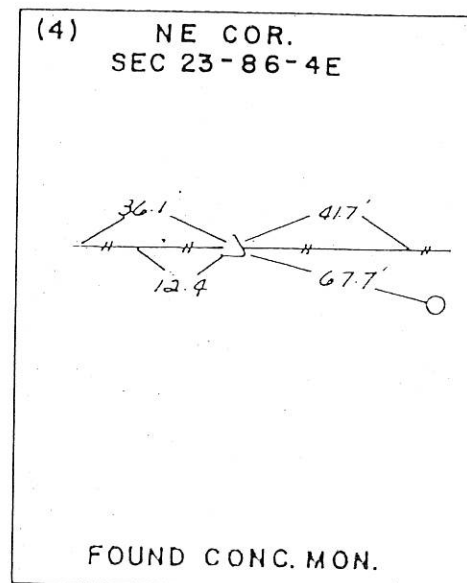
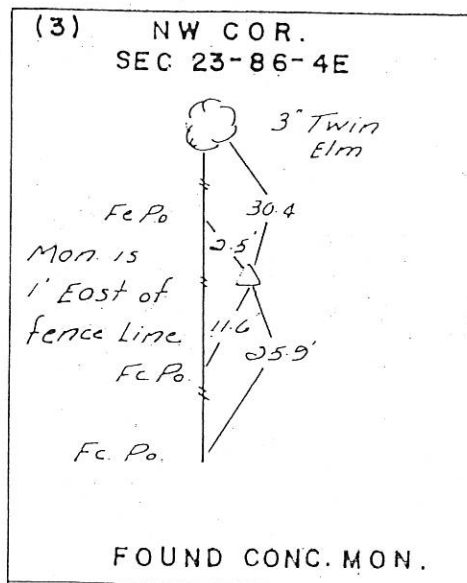
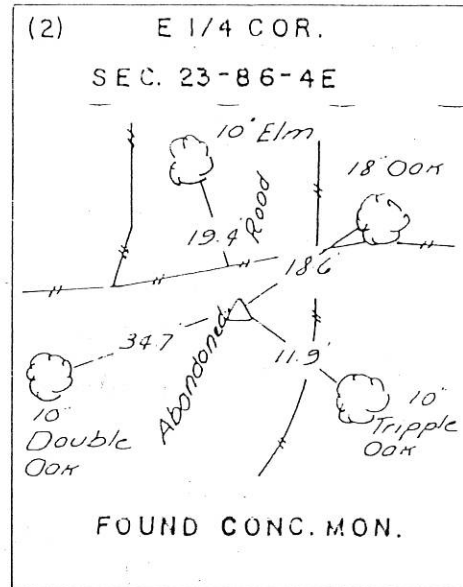
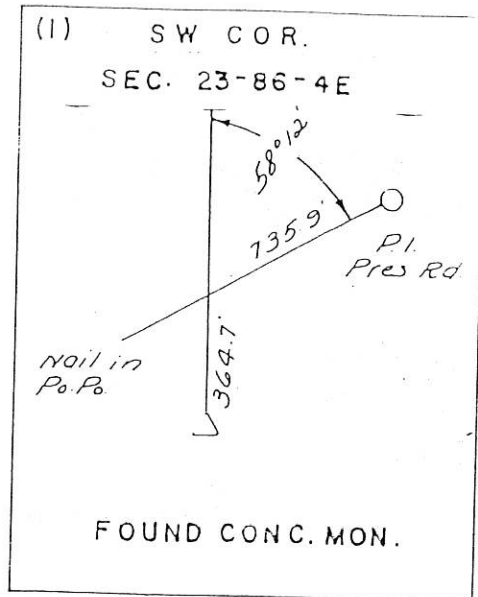


LAND CORNER SURVEY  
T86N MADE FOR R4E  
IOWA STATE HIGHWAY COMMISSION FOR THE PURPOSE  
OF ROW DESCRIPTIONS ON THE RELOCATION OF HIGHWAY 62  
WEST OF BELLEVUE  
MADE BY  
JOHN T. BOYCE R.L.S. NO 6805  
JACKSON COUNTY FN-62-11(4)--21-49  
JUNE - SEPT. 1973

ALL DISTANCES WERE CAREFULLY MEASURED AND MAY NOT AGREE  
WITH ROAD SURVEY STATIONING.  
FOR COMPLETE INFORMATION ON THIS SURVEY, SEE FIELD NOTES ON  
FILE IN THE DISTRICT OFFICE IN CEDAR RAPIDS  
I HEREBY CERTIFY THAT THIS PLAT IS A TRUE REPRESENTATION OF  
A SURVEY MADE BY ME, ASSISTED BY L.R. MCGUIRE, DAVID STODKEY, FRANK  
BELLON, AND MIKE HORST, ALL DULY SWORN, AND IS CORRECT TO THE BEST  
OF MY KNOWLEDGE.  
SIGNED Oct 15, 1973

JOHN T. BOYCE (R.L.S. NO. 6805)





01 4747

FILE NO. 1 PAGE 493

01 NOV 19 AM 10:56

PHYLLIS M. GERLACH  
JACKSON COUNTY, IOWA  
RECORDER #6.01

Prepared by Thomas C. Tucker, L.S., 3851 Eagle Hts., Clinton, IA 52732 (319-242-5392)

SLSI 9-94

# UNITED STATES PUBLIC LAND SURVEY CORNER CERTIFICATE

OF

Land Survey Monuments situated in Section 23, Township 86 N, Range 4 E, of the Fifth Principal Meridian, JACKSON County, Iowa.  
Previously recorded in N.A. in County Recorder's Office.

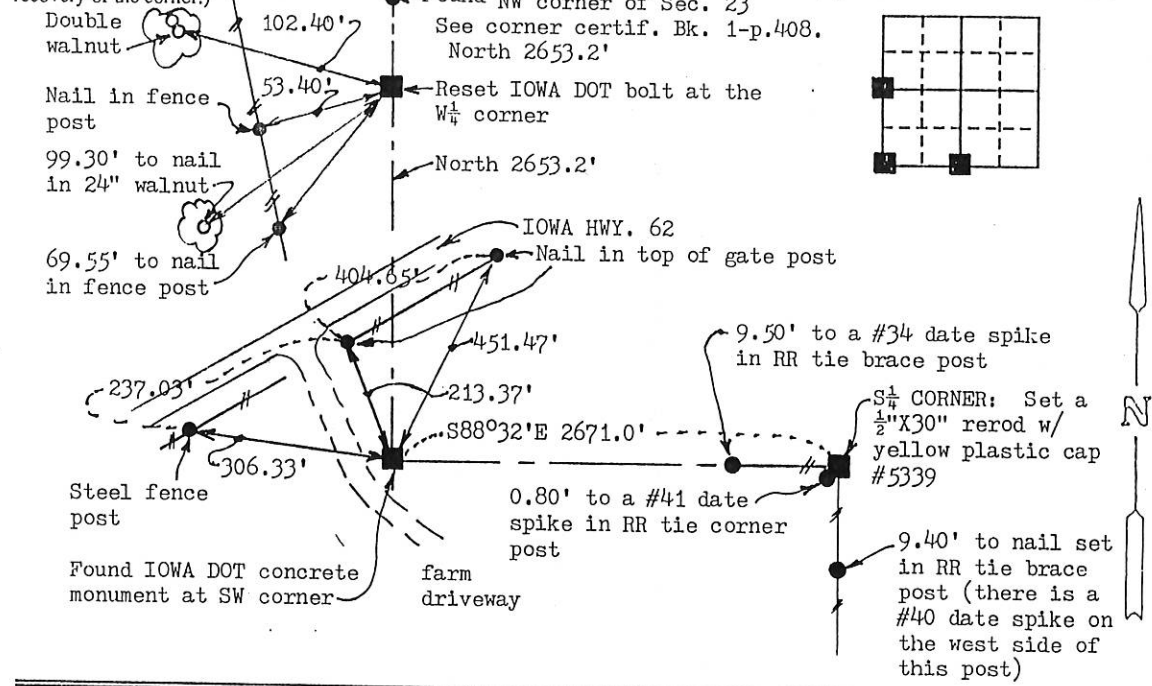
(Show reason for preparing this certificate, the evidence and detailed procedures used in establishing the corner positions and monumentation found or placed.)

Monument Description and Remarks: WEST 1/4 CORNER: Found IOWA DOT 18" long bolt (bent & disturbed) about 12' north of my calculated point. Reset it midway between NW & SW corners.  
The tie to the double walnut tree was within 0.2' of the old DOT tie. Referenced as shown.

SW Corner: Found IOWA DOT concrete monument and referenced as shown. SOUTH 1/4 CORNER: Found no monument. Set 1/2" rerod w/ cap #5339 at ancient fence corner and referenced as shown.  
(For Kurt survey)

## PLAN - VIEW

(Show a minimum of three reference ties to durable physical objects, relevant monuments and physical conditions that will enable recovery of the corner.)



I hereby certify that the survey work was completed and this land surveying document was prepared by me or under my direct personal supervision and that I am a duly registered land surveyor under the laws of the state of Iowa

Signature: Thomas C. Tucker  
Name typed or printed: Thomas C. Tucker

Date: 11/15/01 Reg. No. 5339

My registration renewal date is December 31, 2001

SEAL



Corners	List Corners to be Indexed	Section	Twp	Range
W $\frac{1}{4}$ , SW, S $\frac{1}{4}$	23	86N	4E	



Document 07-3387

Book 2 Page 576 Type 15 001 Pages 1  
Date 7/27/2007 Time 2:53 PM  
Rec Amt \$7.00

ARLENE SCHAUF, RECORDER  
JACKSON COUNTY IOWA

Prepared by Wm. Burger LandSurveyors 510 3rd Street West Court, Worthington, Iowa 52078 Phone 563 - 655 2028

### UNITED STATES PUBLIC LAND SURVEY CORNER CERTIFICATE

Land Survey Monuments situated in Section 23, Township 86N, Range 4E, of the Fifth Principal Meridian Jackson County, Iowa. Previously recorded in SEE NOTE in the Office of the County Recorder

#### Monument Description and Remarks:

S1/4 CORNER - FD. 1/2' IRON ROD W/ NO CAP

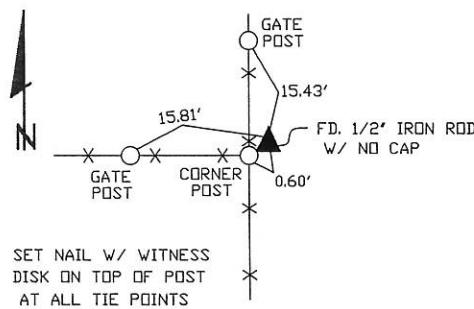
NE CORNER NW1/4 SE1/4 - SET 1/2' IRON ROD W/ YELLOW LS CAP #12642 - USED INFORMATION FROM PLAT PREVIOUSLY RECORDED IN THE OFFICE OF THE JACKSON COUNTY RECORDER BOOK 1-D, PAGE 10

SE CORNER NW1/4 SE1/4 - SET 1/2' IRON ROD W/ YELLOW LS CAP #12642 - USED INFORMATION FROM PLAT PREVIOUSLY RECORDED IN THE OFFICE OF THE JACKSON COUNTY RECORDER BOOK 1-D, PAGE 10 TO ESTABLISH NORTH-SOUTH LINE AND INTERSECTED THAT LINE WITH A STRAIGHT LINE FROM THE SW CORNER OF THE NW1/4 OF THE SE1/4 TO THE SE CORNER OF THE NE1/4 OF THE SE1/4

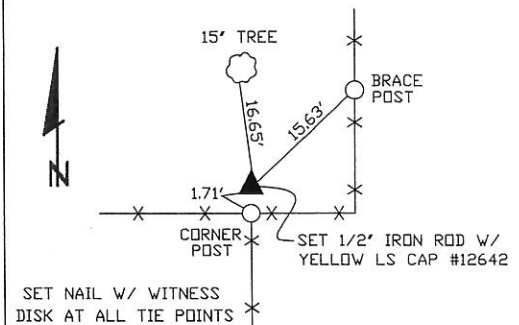
NOTE: THE S1/4 CORNER WAS PREVIOUSLY RECORDED IN THE OFFICE OF THE JACKSON COUNTY RECORDER BK. 1, PG. 493

#### PLAN VIEW

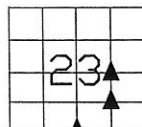
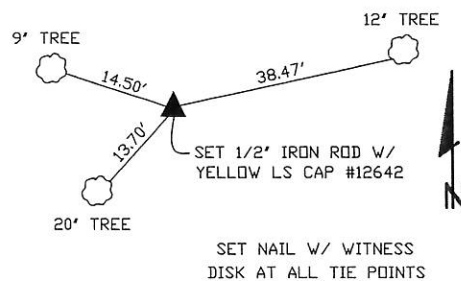
##### S1/4 CORNER



##### NE CORNER NW1/4 SE1/4



##### SE CORNER NW1/4 SE1/4



SEC. 23 TWP. 86N RANGE 4E

#### CORNERS TO BE INDEXED

S1/4 CORNER	23	86N	4E
NE CORNER NW1/4 SE1/4	23	86N	4E
SE CORNER NW1/4 SE1/4	23	86N	4E



I hereby certify that this land surveying document was prepared and related survey work was performed by me or under my direct personal supervision and that I am a duly licensed Land Surveyor under the laws of the State of Iowa.

William H. Burger 7/05/07  
William H. Burger Date

License number 12642

My license renewal date is December 31, 2008

Pages or Sheets covered by this seal: Sheet 1 of 1



Document 08-4244

Book 2 Page 639 Type 15 001 Pages 1  
Date 11/14/2008 Time 8:58 AM  
Rec Amt \$7.00

ARLENE SCHAUF, RECORDER/REGISTRAR  
JACKSON COUNTY IOWA

Prepared by Wm. Burger LandSurveyors 510 3rd Street West Court, Worthington, Iowa 52078 Phone 563 - 855 2028

### UNITED STATES PUBLIC LAND SURVEY CORNER CERTIFICATE

Land Survey Monuments situated in Section 23, Township 86N, Range 4E, of the Fifth Principal Meridian, Jackson County, Iowa. Previously recorded in SEE NOTE in the Office of the County Recorder

Monument Description and Remarks: No Corner Certificates found at the County Recorders Office

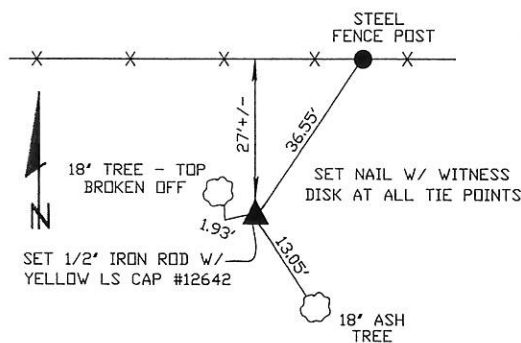
CENTER OF SECTION - SET 1/2' IRON ROD W/ YELLOW LS CAP #12642 - RUN STRAIGHT LINES FROM OPPOSITE 1/4 SECTION CORNERS AND SET AT THE POINT OF INTERSECTION

SW CORNER SE1/4 NW1/4 - SET 1/2' IRON ROD W/ YELLOW LS CAP #12642 - SET ON LINE AND MIDWAY BETWEEN THE CENTER OF SECTION AND THE W1/4 CORNER

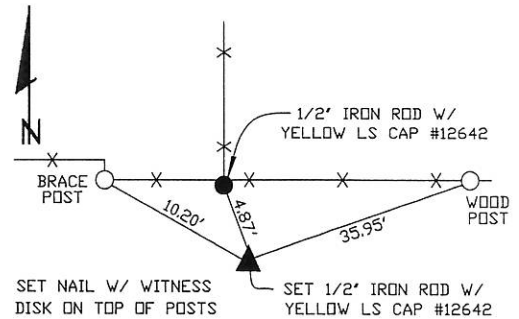
NW CORNER SE1/4 NW1/4 - SET 1/2' IRON ROD W/ YELLOW LS CAP #12642 - SET ON LINE AND MIDWAY BETWEEN THE CENTER OF SECTION AND THE N1/4 CORNER

#### PLAN VIEW

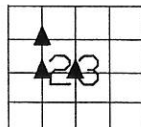
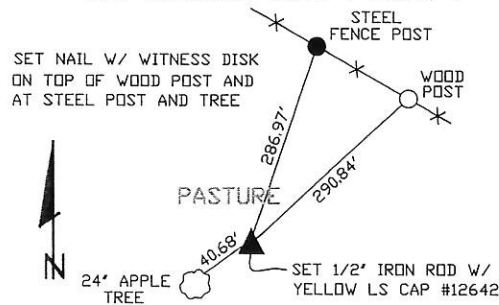
##### CENTER OF SECTION



##### SW CORNER SE1/4 NW1/4



##### NW CORNER SE1/4 NW1/4



SEC. 23 TWP. 86N RANGE 4E

##### CORNERS TO BE INDEXED

CENTER OF SECTION	23	86N	4E
SW CORNER SE1/4 NW1/4	23	86N	4E
NW CORNER SE1/4 NW1/4	23	86N	4E



I hereby certify that this land surveying document was prepared and related survey work was performed by me or under my direct personal supervision and that I am a duly licensed Land Surveyor under the laws of the State of Iowa.

William H. Burger 10/8/08  
William H. Burger Date

License number 12642

My license renewal date is December 31, 2008

Pages or Sheets covered by this seal: Sheet 1 of 1  
Book 2 Page 639