

FILE NO. 03-5535
BOOK 2 PAGE 189

03 SEP 19 PM 2:25

PHYLLIS M. GERLACH
JACKSON COUNTY, IOWA
RECORDER

Fee \$11.00

Prepared by: SCHNEIDER Land Surveying and Planning, Inc. P.O. Box 105 Peosta, Iowa 52068 563-556-9055

UNITED STATES PUBLIC LAND SURVEY CORNER CERTIFICATE OF

Land Survey Monuments situated in Section 20, Township 86 North, Range 4 East of the Fifth Principal Meridian, Jackson County, Iowa.
Previously recorded (NONE OF RECORD)

(BOOK, PAGE / INST. NO. / CABINET, SLIDE)

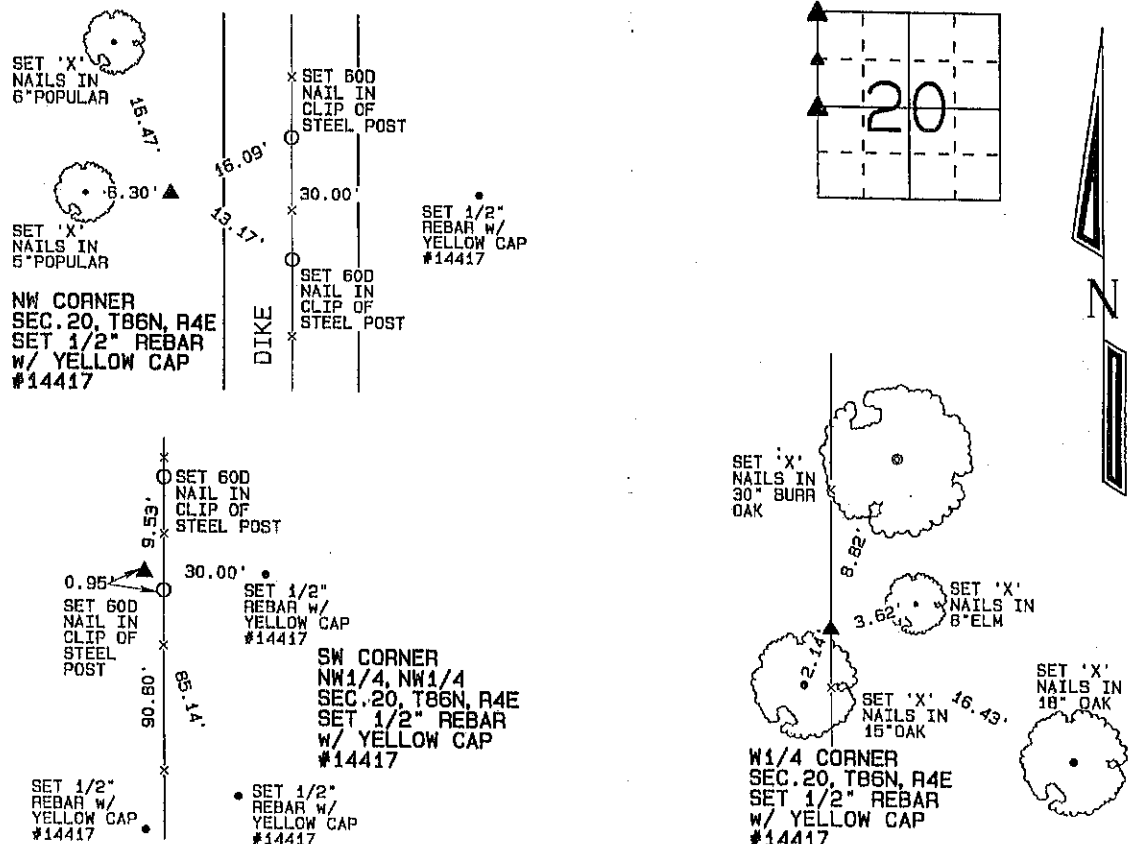
(Show reason for preparing this certificate, the evidence and detailed procedures used in establishing the corner positions and monumentation found or placed.)

Monument Description and Remarks: THE NW CORNER OF SECTION 20, T86N, R4E WAS ESTABLISHED AS ILLUSTRATED IN THE PLAT RECORDED IN BOOK YY, PAGE 16.

THE SW CORNER OF THE NW1/4 OF THE NW1/4 OF SECTION 20, T86N, R4E WAS ESTABLISHED MIDWAY BETWEEN THE NW CORNER AND W1/4 CORNER AND IN LINE WITH THE NORTH-SOUTH OCCUPATION FENCE. THE W1/4 CORNER OF SECTION 20, T86N, R4E WAS ESTABLISHED BY PROPORTIONING THE DISTANCE FROM THE NW CORNER OF SECTION 20 TO THE SW CORNER OF THE NW1/4 OF THE SW1/4 OF SAID SECTION 20 IN COMBINATION WITH THE NORTH-SOUTH OCCUPATION FENCES.

PLAN - VIEW

(Show a minimum of three reference ties to durable physical objects, relevant monuments and physical conditions that will enable recovery of the corner.)



I hereby certify that this land surveying document was prepared and the related survey work was performed by me or under my direct personal supervision and that I am a duly licensed Land Surveyor under the laws of the State of Iowa.

David P. Schneider P.L.S. #14417

My license renewal date is December 31, 2003.

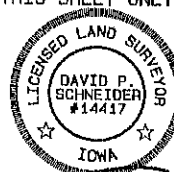
Pages or sheets covered by this seal: THIS SHEET ONLY

List Corners to be Indexed

Corners	Section	Twp	Range
NW	20	86N	4E
SW CORNER NW1/4, NW1/4	20	86N	4E
W1/4	20	86N	4E

SCHNEIDER
Land Surveying & Planning, Inc.

P.O. Box 105 Peosta, Iowa 52068
Ph. #563-556-9055 Fax#563-556-9054





Document 08-363

Book 2 Page 601 Type 15 001 Pages 1
Date 1/31/2008 Time 10:57 AM
Rec Amt \$7.00

ARLENE SCHAUF, RECORDER/REGISTRAR
JACKSON COUNTY IOWA

Prepared by: SCHNEIDER Land Surveying and Planning, Inc. P.O. Box 128 Farley, Iowa 52046 563-744-3631

UNITED STATES PUBLIC LAND SURVEY CORNER CERTIFICATE OF

Land Survey Monuments situated in Section 20, Township 86 North, Range 4 East
of the Fifth Principal Meridian, Jackson County, Iowa.
Previously recorded SE CORNER - SCG BOOK 2, PAGE 136

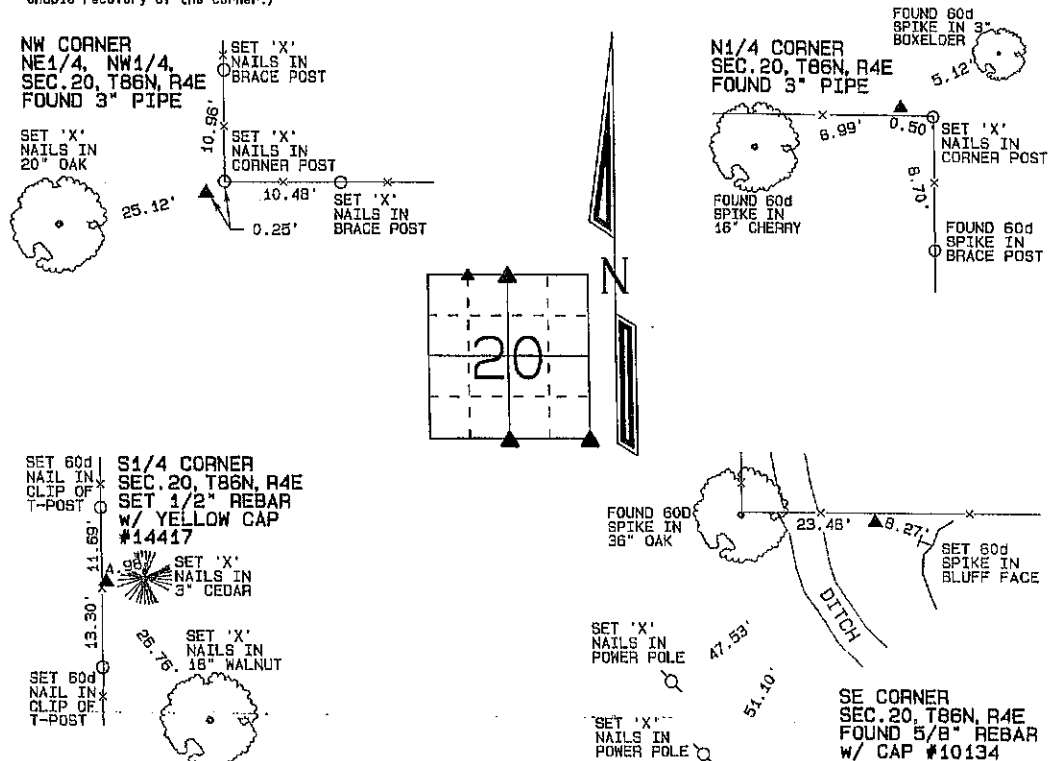
(BOOK, PAGE / TRMT. NO. / CABINET, SLIDE)

(Show reason for preparing this certificate, the evidence and detailed procedures used in establishing the corner positions and monumentation found or placed.)

Monument Description and Remarks: A 3" PIPE WAS FOUND AT THE NW CORNER OF THE NE1/4 OF THE NW1/4
OF SECTION 20, T86N, R4E. A 3" PIPE WAS FOUND AT THE N1/4 CORNER OF SAID SECTION 20. THE S1/4 CORNER WAS
ESTABLISHED USING OCCUPATION FENCES RUNNING TO THE NORTH AND ON A LINE FROM THE SW CORNER TO THE SE CORNER OF
SAID SECTION 20. A 5/8" REBAR WAS FOUND AT THE SE CORNER OF SAID SECTION 20 AS ILLUSTRATED IN A SECTION CORNER
CERTIFICATE FILED IN BOOK 2, PAGE 136. THE CORNER WAS RETIED BECAUSE NONE OF THE TIES REMAINED.

PLAN - VIEW

(Show a minimum of three reference ties to durable physical objects, relevant monuments and physical conditions that will enable recovery of the corner.)



I hereby certify that this land surveying document was prepared and the related survey work was performed by me or under my direct personal supervision and that I am a duly licensed Land Surveyor under the laws of the State of Iowa.

David P. Schneider P.L.S. #14417

Date: 1/28/2008

My license renewal date is December 31, 2009.

Pages or sheets covered by this seal: THIS SHEET ONLY

SCHNEIDER
Land Surveying & Planning, Inc.

P.O. Box 128 Farley, Iowa 52046
Ph. 563-744-3631 Fax 563-744-3629



List Corners to be Indexed

Corners	Section	Twp	Range
N1/4	20	86N	4E
S1/4	20	86N	4E
SE CORNER	20	86N	4E
NW CORNER NE1/4, NW1/4	20	86N	4E

Book 2 Page 601

JOB NO. 1173



Document 08-365

Book 2 Page 603 Type 15 001 Pages 1
Date 1/31/2008 Time 10:57 AM
Rec Amt \$7.00

ARLENE SCHAUF, RECORDER/REGISTRAR
JACKSON COUNTY IOWA

Prepared by: SCHNEIDER Land Surveying and Planning, Inc. P.O. Box 128 Farley, Iowa 52046 563-744-3631

UNITED STATES PUBLIC LAND SURVEY CORNER CERTIFICATE OF

Land Survey Monuments situated in Section 20, Township 86 North, Range 4 East
of the Fifth Principal Meridian, Jackson County, Iowa.
Previously recorded (NONE OF RECORD)

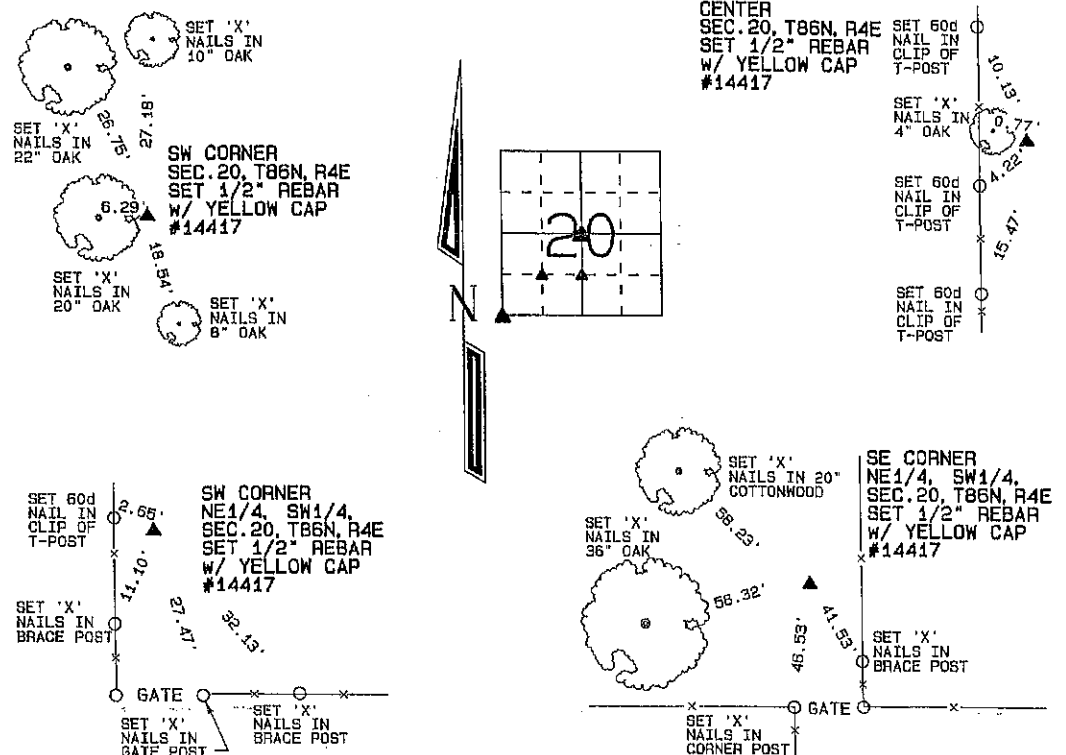
(BOOK, PAGE / DIST. NO. / CABINET, SLIDE)

(Show reason for preparing this certificate, the evidence and detailed procedures used in establishing the corner positions and monumentation found or placed.)

Monument Description and Remarks: THE SW CORNER OF SECTION 20, T86N, R4E WAS ESTABLISHED IN LINE WITH THE NW CORNER AND THE W1/4 CORNER AND BY DOUBLING THE DISTANCE FROM THE W1/4 CORNER TO THE QUARTER-QUARTER CORNER TO THE SOUTH. THE CENTER OF SAID SECTION 20 WAS ESTABLISHED ON LINE FROM THE E1/4 TO W1/4 CORNER AND IN LINE WITH OCCUPATION EVIDENCE TO THE NORTH. THE SW CORNER OF THE NE1/4 OF THE SW1/4 OF SAID SECTION 20 WAS ESTABLISHED AT THE THEORETICAL CENTER OF THE SW QUARTER OF SAID SECTION 20. THE SE CORNER OF THE NE1/4 OF THE SW1/4 OF SAID SECTION 20 WAS ESTABLISHED AT THE MIDPOINT OF A LINE FROM THE CENTER TO THE S1/4 CORNER OF SAID SECTION 20.

PLAN - VIEW

(Show a minimum of three reference ties to durable physical objects, relevant monuments and physical conditions that will enable recovery of the corner.)



I hereby certify that this land surveying document was prepared and the related survey work was performed by me or under my direct personal supervision and that I am a duly licensed Land Surveyor under the laws of the State of Iowa.

David P. Schneider
David P. Schneider P.L.S. #14417 Date: 1/31/2008
My license renewal date is December 31, 2009.

Pages or sheets covered by this seal: THIS SHEET ONLY

SCHNEIDER
Land Surveying & Planning, Inc.
P.O. Box 128 Farley, Iowa 52046
Ph. #563-744-3631 Fax #563-744-3629



List Corners to be Indexed

Corners	Section	Twp	Range
SW CORNER NE1/4, SW1/4	20	86N	4E
SW CORNER	20	86N	4E
CENTER	20	86N	4E
SE CORNER NE1/4, SW1/4	20	86N	4E

Book 2 Page 603

JOB NO. 1173



Document 10-3006

Book 2 Page 724 Type 15 001 Pages 1
Date 7/30/2010 Time 12:06 PM
Rec Amt \$9.00

ARLENE SCHAUF, RECORDER/REGISTRAR
JACKSON COUNTY IOWA

Prepared by Wm. Burger Land Surveyor 610 3rd Street West Court, Worthington, Iowa Phone 563 - 866 2028

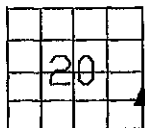
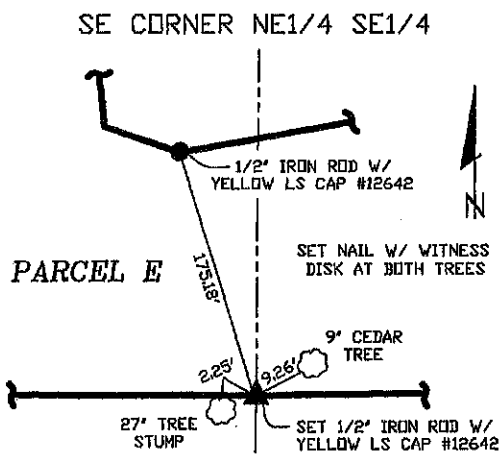
UNITED STATES PUBLIC LAND SURVEY CORNER CERTIFICATE

Land Survey Monuments situated in Section 20, Township 86N, Range 4E, of the Fifth Principal Meridian, Jackson County, Iowa. Previously recorded in NA in the Office of the County Recorder

Monument Description and Remarks: No Corner Certificates Found at the County Recorders Office

SE CORNER NE1/4 SE1/4 - SET 1/2" IRON ROD WITH YELLOW LS CAP #12642 - SET ON LINE AND
MIDWAY BETWEEN THE E1/4 CORNER AND THE SE CORNER

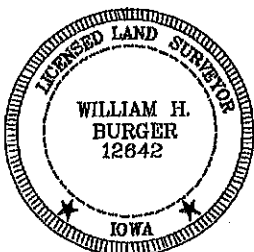
PLAN VIEW



SEC. 20 TWP. 86N RANGE 4E

CORNERS TO BE INDEXED

SE CORNER NE1/4 SE1/4 20 86N 4E



I hereby certify that this land surveying document was prepared and related survey work was performed by me or under my direct personal supervision and that I am a duly licensed Land Surveyor under the laws of the State of Iowa.

William H. Burger 7/16/10
Date

William H. Burger
License number 12642

My license renewal date is December 31, 2010

Pages or Sheets covered by this seal Sheet 1 of 1

Book 2 Page 724



Document 15-4308

Book 2015 Page 4308 Type 15 001 Pages 1

Date 12/28/2015 Time 1:09 PM

Rec Amt \$7.00

ARLENE SCHAUF, RECORDER/REGISTRAR
JACKSON COUNTY IOWA

Prepared by: SCHNEIDER Land Surveying and Planning, Inc. P.O. Box 128 Farley, Iowa 52046 563-744-3631

UNITED STATES PUBLIC LAND SURVEY CORNER CERTIFICATE OF

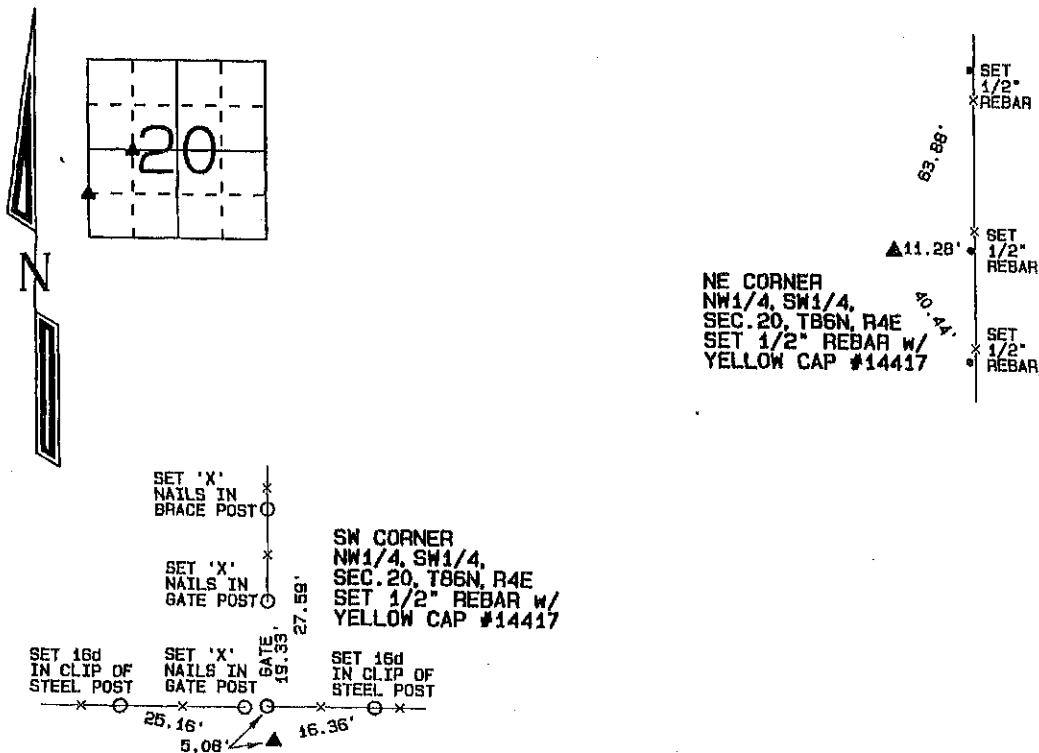
Land Survey Monuments situated in Section 20, Township 86 North, Range 4 East
of the Fifth Principal Meridian, Jackson County, Iowa.

Previously recorded (NONE OF RECORD)

Monument Description and Remarks:

THE NE CORNER OF THE NW1/4 OF THE SW1/4 OF SECTION 20, T86N, R4E WAS ESTABLISHED AT THE MIDPOINT OF A LINE FROM THE W1/4 CORNER TO THE CENTER OF SAID SECTION 20. THE SW CORNER OF THE NW1/4 OF THE SW1/4 OF SECTION 20, T86N, R4E WAS ESTABLISHED AT THE MIDPOINT OF A LINE FROM THE W1/4 CORNER TO THE SW CORNER OF SAID SECTION 20.

PLAN - VIEW



I hereby certify that this land surveying document was prepared and the related survey work was performed by me or under my direct personal supervision and that I am a duly licensed Land Surveyor under the laws of the State of Iowa.

David P. Schneider 12/11/2015
David P. Schneider P.L.S. #14417 Date:
My license renewal date is December 31, 2015.

Pages or sheets covered by this seal: THIS SHEET ONLY

SCHNEIDER
Land Surveying & Planning, Inc.

P.O. Box 128 Farley, Iowa 52046
Ph. #563-744-3631 Fax #563-744-3629



List Corners to be Indexed

Corners	Section	Twp	Range
NE CORNER NW1/4, SW1/4	20	86N	4E
SW CORNER NW1/4, SW1/4	20	86N	4E

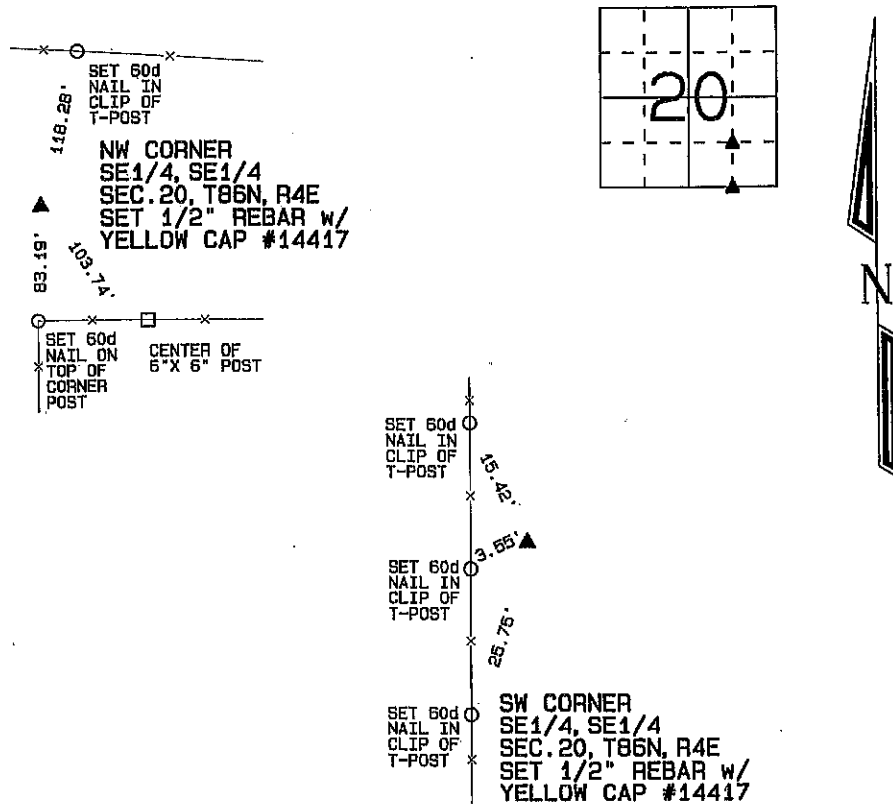
Prepared by: SCHNEIDER Land Surveying and Planning, Inc. P.O. Box 128 Farley, Iowa 52046 563-744-3631

UNITED STATES PUBLIC LAND SURVEY CORNER CERTIFICATE OF

Land Survey Monuments situated in Section 20, Township 86 North, Range 4 East
of the Fifth Principal Meridian, Jackson County, Iowa.
Previously recorded (NONE OF RECORD)
(BOOK, PAGE / INST. NO. / CABINET, SLIDE)

Monument Description and Remarks: THE NW CORNER OF THE SE1/4 OF THE SE1/4 OF SECTION 20, T86N, R4E
WAS ESTABLISHED ON A LINE FROM THE NW CORNER OF THE SW1/4 OF THE SE1/4 TO THE NE CORNER OF THE
SE1/4 OF THE SE1/4 AND BY USING OCCUPATION EVIDENCE TO THE SOUTH.
THE SW CORNER OF THE SE1/4 OF THE SE1/4 OF SECTION 20, T86N, R4E WAS ESTABLISHED AT THE MIDPOINT OF A LINE
FROM THE S1/4 CORNER TO THE SE CORNER OF SAID SECTION 20.

PLAN - VIEW



I hereby certify that this land surveying document was prepared and the related survey work was performed by me or under my direct personal supervision and that I am a duly licensed Land Surveyor under the laws of the State of Iowa.

David P. Schneider P.L.S. #14417

Date:

My license renewal date is December 31, 2019.

Pages or sheets covered by this seal: THIS SHEET ONLY

List Corners to be Indexed

Corners	Section	Twp	Range
NW CORNER SE1/4, SE1/4	20	86N	4E
SW CORNER SE1/4, SE1/4	20	86N	4E

SCHNEIDER
Land Surveying & Planning, Inc.

P.O. Box 128 Farley, Iowa 52046
Ph. #563-744-3631 daves@yousq.net



JOB NO. 2104



Document 24-3214

Type 15 001

Pages 1

Date 11/26/2024 Time 8:23 AM

Rec Amt \$7.00

ARLENE SCHAUF, RECORDER/REGISTRAR
JACKSON COUNTY IOWA

PREPARED BY: MICHAEL J. WEBER, WEBER SURVEYING, LLC, 26789 46TH AVE, BERNARD, IA 52032 (563) 879-4173

UNITED STATES PUBLIC LAND SURVEY CORNER CERTIFICATE OF

LAND SURVEY MONUMENTS SITUATED IN SECTION 20, TOWNSHIP 86 NORTH, RANGE 4 EAST
OF THE FIFTH PRINCIPAL MERIDIAN, JACKSON COUNTY, IOWA.
PREVIOUSLY RECORDED NONE

(book, page, document number, etc.)

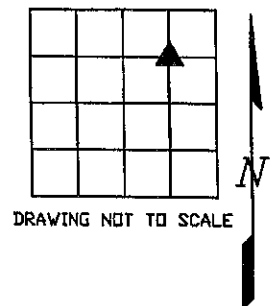
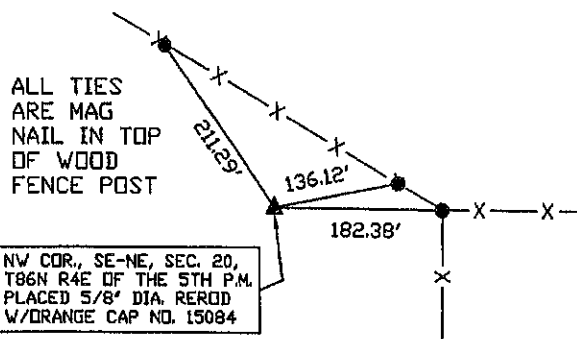
(Show reason for preparing this certificate, the evidence and detailed procedures used in establishing the corner positions and monumentation found or placed.)

Monument Description and Remarks:

-NW COR., SE-NE, SEC. 20, T86N R4E OF THE 5TH P.M. PLACED 5/8" DIA. REROD W/ORANGE CAP NO. 15084. ESTABLISHED CORNER AT THE INTERSECTION OF THE WEST LINE OF THE SE-NE OF SAID SECTION 20 WITH A OCCUPATION FENCE LINE RUNNING EAST-WEST ON THE NORTH LINE OF THE SE-NE OF SAID SECTION 20

(Show a minimum of three reference ties to durable physical objects, relevant monuments and physical conditions that will enable recovery of the corner.)

PLAN - VIEW



DWG. 24121

	I HEREBY CERTIFY THAT THIS LAND SURVEYING DOCUMENT WAS PREPARED AND THE RELATED SURVEY WORK WAS PERFORMED BY ME OR UNDER MY DIRECT PERSONAL SUPERVISION AND THAT I AM A DULY LICENSED LAND SURVEYOR UNDER THE LAWS OF THE STATE OF IOWA. <i>Michael J. Weber</i> November 25, 2024 MICHAEL J. WEBER (DATE) LICENSE NUMBER 15084 MY LICENSE RENEWAL DATE IS DECEMBER 31, 2025 SHEETS COVERED BY THIS SEAL: THIS SHEET	List Corners to be Indexed Corner Sec Twp Range NW COR., SE-NE 20-86N-4E