



Document 11-1070

Book 2 Page 763 Type 15 001 Pages 1

Date 3/21/2011 Time 8:56 AM

Rec Amt \$9.00

ARLENE SCHAUF, RECORDER/REGISTRAR  
JACKSON COUNTY IOWA

PREPARED BY: MICHAEL J. WEBER, WEBER SURVEYING, LLC, 26789 46TH AVE, BERNARD, IA 52032 (563) 879-4173

## UNITED STATES PUBLIC LAND SURVEY CORNER CERTIFICATE OF

LAND SURVEY MONUMENTS SITUATED IN SECTION 19, TOWNSHIP 86 NORTH, RANGE 4 EAST  
OF THE FIFTH PRINCIPAL MERIDIAN, JACKSON COUNTY, IOWA.

PREVIOUSLY RECORDED NONE UNLESS NOTED BELOW

(book, page, document number, etc.)

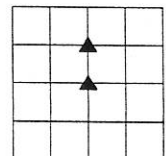
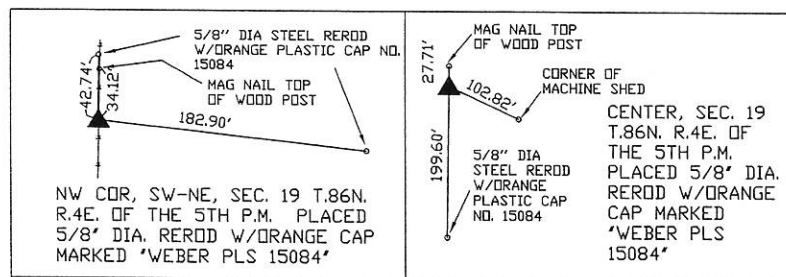
(Show reason for preparing this certificate, the evidence and detailed procedures used in establishing the corner positions and monumentation found or placed.)

Monument Description and Remarks:

-CENTER, SEC. 19 T.86N. R.4E. OF THE 5TH P.M. PLACED 5/8" DIA. REROD W/ORANGE CAP MARKED 'WEBER PLS 15084' ESTABLISHED CORNER AT THE INTERSECTION OF LINES BETWEEN THE EAST & WEST 1/4 CORNERS AND THE NORTH SOUTH FENCELINE  
-NW COR, SW-NE, SEC. 19 T.86N. R.4E. OF THE 5TH P.M. PLACED 5/8" DIA. REROD W/ORANGE CAP MARKED 'WEBER PLS 15084' ESTABLISHED CORNER AT THE MIDWAY AND ONLINE BETWEEN THE NORTH 1/4 CORNER AND THE CENTER OF SECTION 19

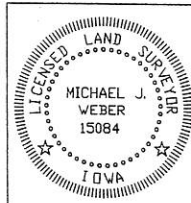
(Show a minimum of three reference ties to durable physical objects, relevant monuments and physical conditions that will enable recovery of the corner.)

### PLAN - VIEW



DRAWING NOT TO SCALE

DWG. NO. 2011\MENSIN



I HEREBY CERTIFY THAT THIS LAND SURVEYING DOCUMENT WAS PREPARED AND THE RELATED SURVEY WORK WAS PERFORMED BY ME OR UNDER MY DIRECT PERSONAL SUPERVISION AND THAT I AM A DULY LICENSED LAND SURVEYOR UNDER THE LAWS OF THE STATE OF IOWA.

*Michael J. Weber* February 2, 2011  
MICHAEL J. WEBER (DATE)

LICENSE NUMBER 15084

MY LICENSE RENEWAL DATE IS DECEMBER 31, 2011

SHEETS COVERED BY THIS SEAL: THIS SHEET

Corner	Sec	Twp	Range
CENTER	19	86N	4E
NW COR, SW-NE	19	86N	4E

Book 2 Page 763



Document 11-2837

Book 2 Page 773 Type 15 001 Pages 1

Date 7/21/2011 Time 8:32 AM

Rec Amt \$7.00

ARLENE SCHAUF, RECORDER/REGISTRAR  
JACKSON COUNTY IOWA

PREPARED BY: MICHAEL J. WEBER, WEBER SURVEYING, LLC, 26789 46TH AVE, BERNARD, IA 52032 (563) 879-4173

## UNITED STATES PUBLIC LAND SURVEY CORNER CERTIFICATE OF

LAND SURVEY MONUMENTS SITUATED IN SECTION 19, TOWNSHIP 86 NORTH, RANGE 4 EAST  
OF THE FIFTH PRINCIPAL MERIDIAN, JACKSON COUNTY, IOWA.  
PREVIOUSLY RECORDED NONE UNLESS NOTED BELOW

(book, page, document number, etc.)

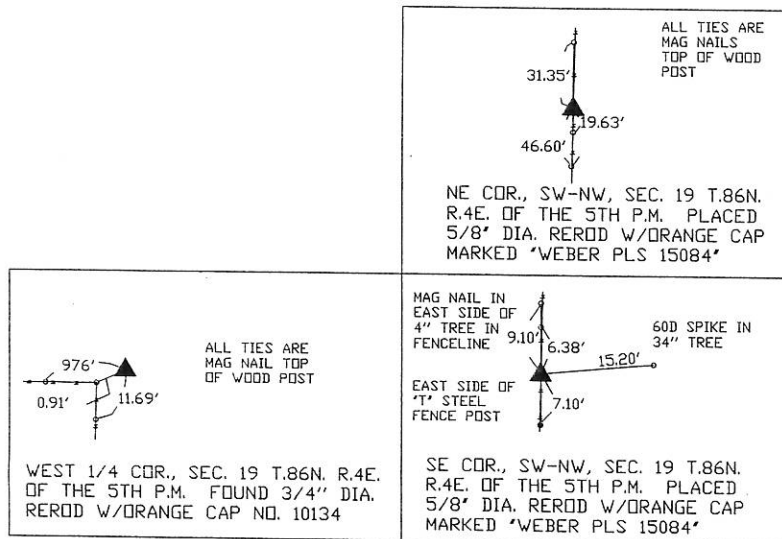
(Show reason for preparing this certificate, the evidence and detailed procedures used in establishing the corner positions and nonumentation found or placed.)

Monument Description and Remarks:

-WEST, SEC. 19 T.86N. R.4E. OF THE 5TH P.M. FOUND 3/4" DIA. REROD W/ORANGE CAP NO. 10134 AT THE CORNER OF OCCUPATION FENCELINES RUNNING WEST & SOUTH. LOCATION MATCHES CORNER SHOWN ON PLAT BOOK 1-E PAGE 90 AND EASEMENT FOR PUBLIC HIGHWAY IN BOOK XX PAGE 351  
-NE COR., SW-NW, SEC. 19 T.86N. R.4E. OF THE 5TH P.M. PLACED 5/8" DIA. REROD W/ORANGE CAP MARKED 'WEBER PLS 15084' ESTABLISHED CORNER AT THE INTERSECTION OF THE LINE BETWEEN THE 1/4 1/4 CORNERS EAST & WEST AND THE FENCELINE RUNNING NORTH & SOUTH  
-SE COR., SW-NW, SEC. 19 T.86N. R.4E. OF THE 5TH P.M. PLACED 5/8" DIA. REROD W/ORANGE CAP MARKED 'WEBER PLS 15084' ESTABLISHED CORNER AT THE INTERSECTION OF THE LINE BETWEEN THE WEST 1/4 CORNER AND CENTER OF SECTION AND THE FENCELINE RUNNING NORTH & SOUTH

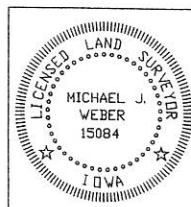
(Show a minimum of three reference ties to durable physical objects, relevant monuments and physical conditions that will enable recovery of the corner.)

### PLAN - VIEW



DRAWING NOT TO SCALE

DWG. NO. 2011\MENSIN\DWG\HINGTGEN



I HEREBY CERTIFY THAT THIS LAND SURVEYING DOCUMENT WAS PREPARED AND THE RELATED SURVEY WORK WAS PERFORMED BY ME OR UNDER MY DIRECT PERSONAL SUPERVISION AND THAT I AM A DULY LICENSED LAND SURVEYOR UNDER THE LAWS OF THE STATE OF IOWA.

*Michael J. Weber* *July 15, 2011*  
(DATE)

MICHAEL J. WEBER  
LICENSE NUMBER 15084

MY LICENSE RENEWAL DATE IS DECEMBER 31, 2011

SHEETS COVERED BY THIS SEAL: THIS SHEET

Corner	Sec	Twp	Range
WEST	19	86N	4E
NE COR., SW-NW	19	86N	4E
SE COR., SW-NW	19	86N	4E

Book 2 Page 773