

FILE NO. 03-5534
BOOK 2 PAGE 188

03 SEP 19 PM 2:25

PHYLLIS M. GERLACH
JACKSON COUNTY, IOWA
RECORDER
Fee \$11.00

Prepared by: SCHNEIDER Land Surveying and Planning, Inc. P.O. Box 105 Peosta, Iowa 52068 563-556-9055

UNITED STATES PUBLIC LAND SURVEY CORNER CERTIFICATE OF

Land Survey Monuments situated in Section 18, Township 86 North, Range 4 East of the Fifth Principal Meridian, Jackson County, Iowa.

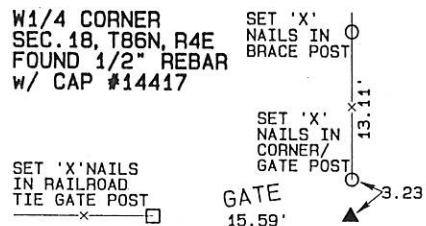
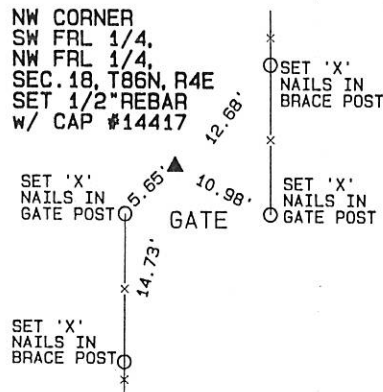
Previously recorded NONE OF RECORD

(Show reason for preparing this certificate, the evidence and detailed procedures used in establishing the corner positions and monumentation found or placed.)

Monument Description and Remarks: THE NW CORNER OF THE SW FRACTIONAL 1/4 OF THE NW FRACTIONAL 1/4 OF SECTION 18, T86N, R4E WAS ESTABLISHED AT THE MIDPOINT OF A LINE FROM THE W1/4 CORNER TO THE NW CORNER OF SAID SECTION 18. THE W1/4 CORNER OF SECTION 18, T86N, R4E WAS ESTABLISHED USING EXISTING OCCUPATION FENCE EVIDENCE.

PLAN - VIEW

(Show a minimum of three reference ties to durable physical objects, relevant monuments and physical conditions that will enable recovery of the corner.)

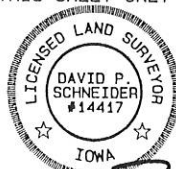


I hereby certify that this land surveying document was prepared and the related survey work was performed by me or under my direct personal supervision and that I am a duly licensed Land Surveyor under the laws of the State of Iowa.

David P. Schneider P.L.S. #14417 Date: 7/18/2003
My license renewal date is December 31, 2003.

Pages or sheets covered by this seal: THIS SHEET ONLY

SCHNEIDER
Land Surveying & Planning, Inc.
P.O. Box 105 Peosta, Iowa 52068
Ph. #563-556-9055 Fax#563-556-9054



List Corners to be Indexed

Corners	Section	Twp	Range
NW CORNER SW FRL 1/4. NW FRL 1/4	18	86N	4E
W1/4	18	86N	4E

JOB NO. 298

FILE NO. **03-5536**
BOOK **2** PAGE **190**

03 SEP 19 PM 2:25

PHYLLIS M. GERLACH
JACKSON COUNTY, IOWA
RECORDER

Fee **11.00**

Prepared by: SCHNEIDER Land Surveying and Planning, Inc. P.O. Box 105 Peosta, Iowa 52068 563-556-9055

UNITED STATES PUBLIC LAND SURVEY CORNER CERTIFICATE OF

Land Survey Monuments situated in Section 18, Township 86 North, Range 4 East of the Fifth Principal Meridian, Jackson County, Iowa.
Previously recorded (NONE OF RECORD)

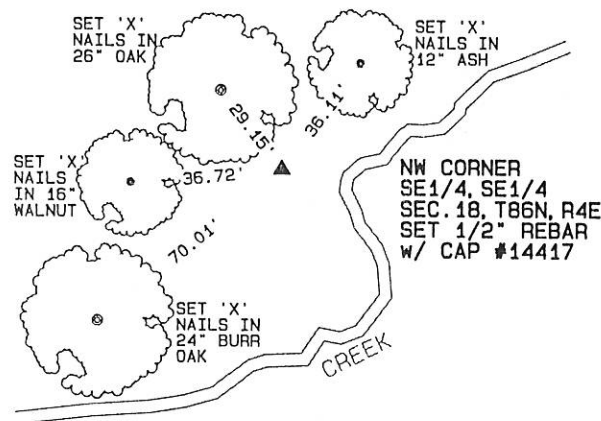
(BOOK, PAGE / INST. NO. / CABINET, SLIDE)

(Show reason for preparing this certificate, the evidence and detailed procedures used in establishing the corner positions and monumentation found or placed.)

Monument Description and Remarks: THE NW CORNER OF THE SE1/4 OF THE SE1/4 OF SECTION 18, T86N, R4E
WAS ESTABLISHED AT THE INTERSECTION OF A LINE FROM THE SE CORNER OF THE NE1/4 OF THE SW 1/4 TO THE NE CORNER
OF THE SE1/4 OF THE SE1/4 OF SAID SECTION 18 WITH A LINE FROM THE SE CORNER OF THE SW1/4 OF THE NE1/4 TO THE
SW CORNER OF THE SE1/4 OF THE SE1/4 OF SAID SECTION 18. THE NE CORNER OF THE SE1/4 OF THE SE1/4 OF SECTION 18,
T86N, R4E WAS ESTABLISHED AT THE MIDPOINT OF A LINE FROM THE E1/4 CORNER TO THE SE CORNER OF SAID SECTION 18.
THE SW CORNER OF THE SE1/4 OF THE SE1/4 OF SECTION 18, T86N, R4E WAS ESTABLISHED AT THE MIDPOINT OF A LINE FROM
THE S1/4 CORNER TO THE SE CORNER OF SAID SECTION 18.

PLAN - VIEW

(Show a minimum of three reference ties to durable physical objects, relevant monuments and physical conditions that will enable recovery of the corner.)



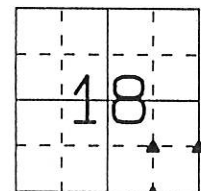
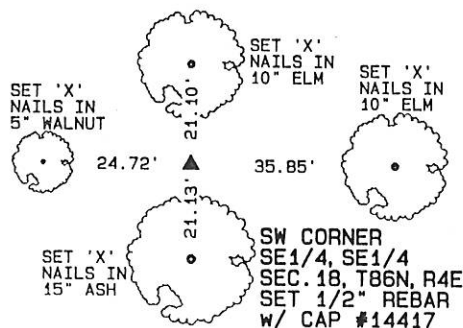
NE CORNER
SE1/4, SE1/4
SEC. 18, T86N, R4E
SET 1/2\"/>

SET 'X'
NAILS IN
FENCE POST

SET 'X'
NAILS IN
FENCE POST

2.8'
TO FENCE
WIRE

SET 'X'
NAILS IN
FENCE POST



I hereby certify that this land surveying document was prepared and the related survey work was performed by me or under my direct personal supervision and that I am a duly licensed Land Surveyor under the laws of the State of Iowa.

David P. Schneider P.L.S. #14417

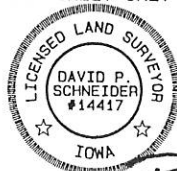
Date: 9/10/2003

My license renewal date is December 31, 2003.

Pages or sheets covered by this seal: THIS SHEET ONLY

SCHNEIDER
Land Surveying & Planning, Inc.

P.O. Box 105 Peosta, Iowa 52068
Ph. #563-556-9055 Fax#563-556-9054



List Corners to be Indexed

Corners	Section	Twp	Range
NW CORNER SE1/4, SE1/4	18	86N	4E
NE CORNER SE1/4, SE1/4	18	86N	4E
SW CORNER SE1/4, SE1/4	18	86N	4E

03 SEP 19 PM 2:25

PHYLLIS M. GERLACH
JACKSON COUNTY, IOWA
RECORDER **Fee 11.00**

Prepared by: SCHNEIDER Land Surveying and Planning, Inc. P.O. Box 105 Peosta, Iowa 52068 563-556-9055

UNITED STATES PUBLIC LAND SURVEY CORNER CERTIFICATE OF

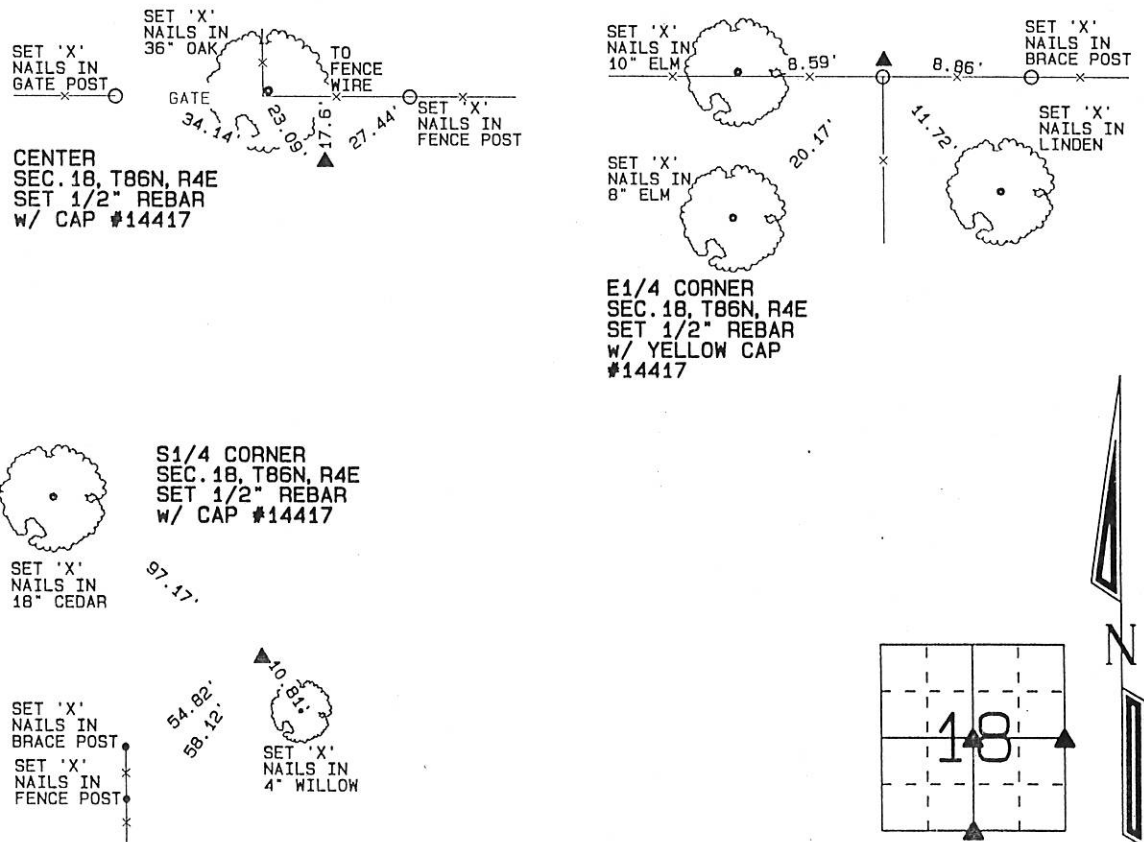
Land Survey Monuments situated in Section 18, Township 86 North, Range 4 East of the Fifth Principal Meridian, Jackson County, Iowa.
Previously recorded (NONE OF RECORD)

(Show reason for preparing this certificate, the evidence and detailed procedures used in establishing the corner positions and monumentation found or placed.)

Monument Description and Remarks: THE CENTER OF SECTION 18, T86N, R4E WAS ESTABLISHED AT THE INTERSECTION OF A LINE FROM THE E1/4 CORNER TO THE W1/4 CORNER WITH A LINE FROM THE N1/4 CORNER TO THE S1/4 CORNER OF SAID SECTION 18. THE S1/4 CORNER OF SECTION 18, T86N, R4E WAS ESTABLISHED AT THE INTERSECTION OF A LINE FROM THE CENTER OF SECTION 19, T86N, R4E EXTENDED NORTH ALONG OCCUPATION FENCES WITH A LINE FROM THE SW CORNER TO THE SE CORNER OF SAID SECTION 18. THE E1/4 CORNER OF SECTION 18, T86N, R4E WAS ESTABLISHED AT THE INTERSECTION OF OCCUPATION FENCES.

PLAN - VIEW

(Show a minimum of three reference ties to durable physical objects, relevant monuments and physical conditions that will enable recovery of the corner.)



I hereby certify that this land surveying document was prepared and the related survey work was performed by me or under my direct personal supervision and that I am a duly licensed Land Surveyor under the laws of the State of Iowa.

David P. Schneider 9/18/2003
David P. Schneider P.L.S. #14417 Date:
My license renewal date is December 31, 2003.

Pages or sheets covered by this seal: THIS SHEET ONLY

SCHNEIDER
Land Surveying & Planning, Inc.

P.O. Box 105 Peosta, Iowa 52068
Ph. #563-556-9055 Fax#563-556-9054



List Corners to be Indexed

Corners	Section	Twp	Range
CENTER	18	86 N	4E
E1/4	18	86 N	4E
S1/4	18	86 N	4E

03 SEP 19 PM 2:25

PHYLLIS M. GERLACH
 JACKSON COUNTY, IOWA
 RECORDER *Feb 11, 00*

Prepared by: SCHNEIDER Land Surveying and Planning, Inc. P.O. Box 105 Peosta, Iowa 52068 563-556-9055

UNITED STATES PUBLIC LAND SURVEY CORNER CERTIFICATE OF

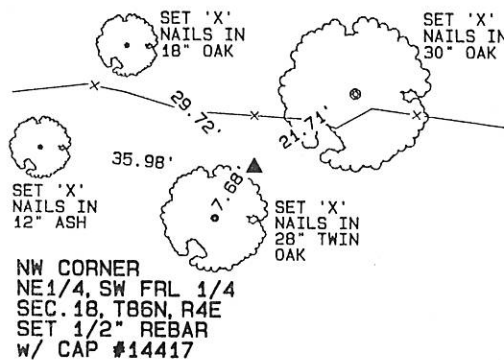
Land Survey Monuments situated in Section 18, Township 86 North, Range 4 East of the Fifth Principal Meridian, Jackson County, Iowa.
 Previously recorded (NONE OF RECORD)

(Show reason for preparing this certificate, the evidence and detailed procedures used in establishing the corner positions and monumentation found or placed.)

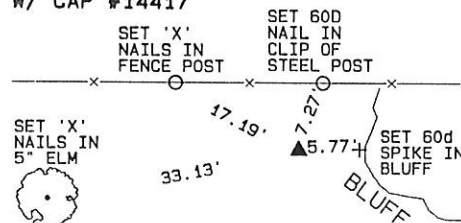
Monument Description and Remarks: THE NW CORNER OF THE NE1/4 OF THE SW FRL 1/4 OF SECTION 18, T86N, R4E WAS ESTABLISHED AT THE INTERSECTION OF A LINE FROM THE SW CORNER OF THE SE1/4 OF THE SW FRL 1/4 TO THE NW CORNER OF THE NE1/4 OF THE NW FRL 1/4 AND A LINE FROM THE W1/4 CORNER TO THE CENTER OF SAID SECTION 18. THE SW CORNER OF THE NE1/4 OF THE SW FRL 1/4 OF SECTION 18, T86N, R4E WAS ESTABLISHED AT THE MIDPOINT OF A LINE FROM THE NW CORNER OF THE NE1/4 OF THE SW FRL 1/4 TO THE SW CORNER OF THE SE1/4 OF THE SW FRL 1/4 OF SAID SECTION 18. THE SE CORNER OF THE NE1/4 OF THE SW FRL 1/4 OF SECTION 18, T86N, R4E WAS ESTABLISHED AT THE MIDPOINT OF A LINE FROM CENTER TO THE S1/4 CORNER OF SAID SECTION 18.

PLAN - VIEW

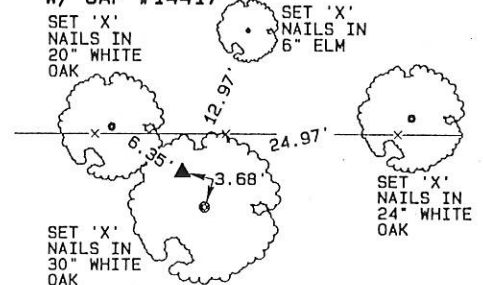
(Show a minimum of three reference ties to durable physical objects, relevant monuments and physical conditions that will enable recovery of the corner.)



SW CORNER
 NE1/4, SW FRL 1/4
 SEC. 18, T86N, R4E
 SET 1/2" REBAR
 w/ CAP #14417



SE CORNER
 NE1/4, SW FRL 1/4
 SEC. 18, T86N, R4E
 SET 1/2" REBAR
 w/ CAP #14417



I hereby certify that this land surveying document was prepared and the related survey work was performed by me or under my direct personal supervision and that I am a duly licensed Land Surveyor under the laws of the State of Iowa.

David P. Schneider P.L.S. #14417 Date: 9/18/2003
 My license renewal date is December 31, 2003.
 Pages or sheets covered by this seal: THIS SHEET ONLY

SCHNEIDER
 Land Surveying & Planning, Inc.
 P.O. Box 105 Peosta, Iowa 52068
 Ph. #563-556-9055 Fax #563-556-9054



List Corners to be Indexed

Corners	Section	Twp	Range
NW CORNER NE1/4, SW FRL 1/4	18	86N	4E
SW CORNER NE1/4, SW FRL 1/4	18	86N	4E
SE CORNER NE1/4, SW FRL 1/4	18	86N	4E

FILE NO. **03-5539**
BOOK **2** PAGE **193**

03 SEP 19 PM 2:25

PHYLLIS M. GERLACH
JACKSON COUNTY, IOWA
RECORDER **Feb 11, 00**

Prepared by: SCHNEIDER Land Surveying and Planning, Inc. P.O. Box 105 Peosta, Iowa 52068 563-556-9055

UNITED STATES PUBLIC LAND SURVEY CORNER CERTIFICATE OF

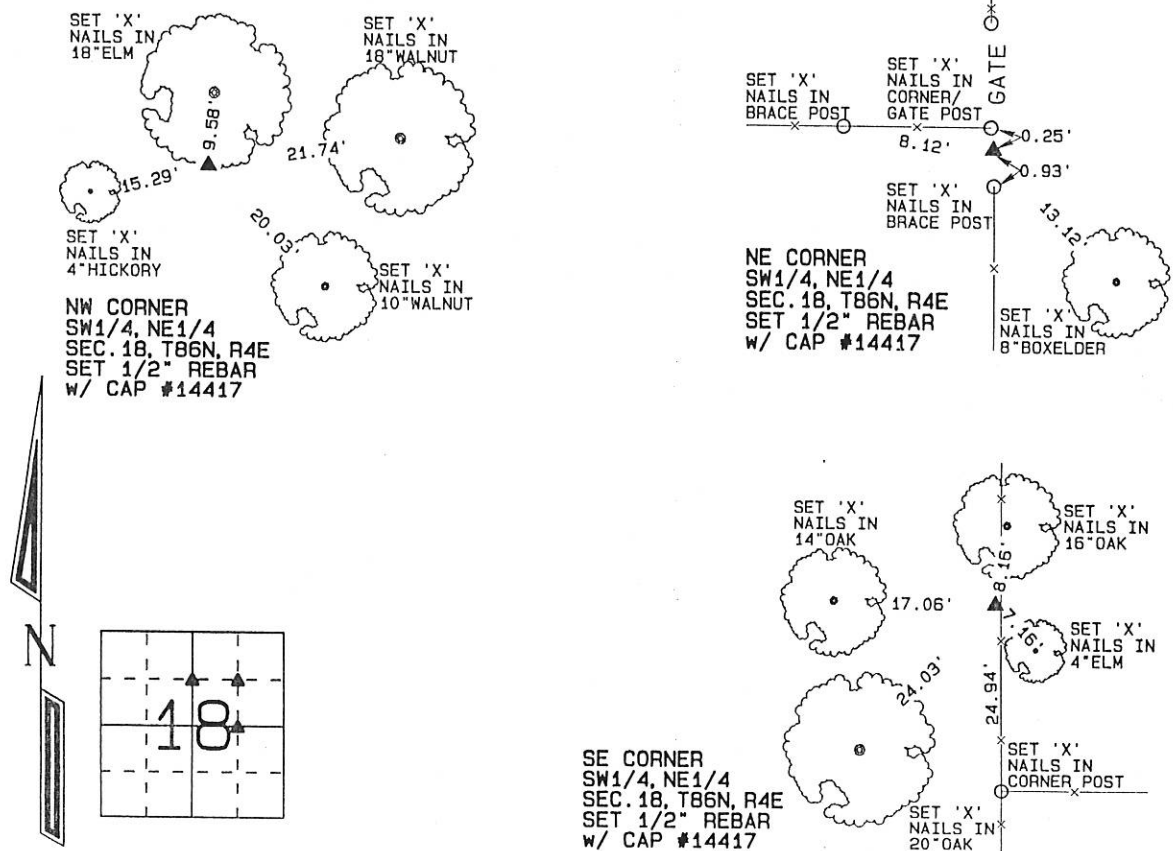
Land Survey Monuments situated in Section 18, Township 86 North, Range 4 East
of the Fifth Principal Meridian, Jackson County, Iowa.
Previously recorded (NONE OF RECORD)

(Show reason for preparing this certificate, the evidence and detailed procedures used in establishing the corner positions and monumentation found or placed.)

Monument Description and Remarks: THE NW CORNER OF THE SW1/4 OF THE NE1/4 OF SECTION 18, T86N, R4E
WAS ESTABLISHED AT THE MIDPOINT OF A LINE FROM THE N1/4 CORNER TO THE CENTER OF SAID SECTION 18. THE NE CORNER
OF THE SW1/4 OF THE NE1/4 OF SECTION 18, T86N, R4E WAS ESTABLISHED USING EXISTING OCCUPATION EVIDENCE.
THE SE CORNER OF THE SW1/4 OF THE NE1/4 OF SECTION 18, T86N, R4E WAS ESTABLISHED AT THE INTERSECTION OF A EXISTING
OCCUPATION FENCE THAT RUNS NORTH/SOUTH WITH A LINE FROM THE CENTER TO THE E1/4 CORNER OF SAID SECTION 18.

PLAN - VIEW

(Show a minimum of three reference ties to durable physical objects, relevant monuments and physical conditions that will enable recovery of the corner.)



I hereby certify that this land surveying document was prepared and the related survey work was performed by me or under my direct personal supervision and that I am a duly licensed Land Surveyor under the laws of the State of Iowa.

David P. Schneider 9/18/2003
David P. Schneider P.L.S. #14417 Date:
My license renewal date is December 31, 2003.

Pages or sheets covered by this seal: THIS SHEET ONLY

SCHNEIDER
Land Surveying & Planning, Inc.
P.O. Box 105 Peosta, Iowa 52068
Ph. #563-556-9055 Fax#563-556-9054



List Corners to be Indexed

Corners	Section	Twp	Range
NW CORNER SW1/4, NE1/4	18	86N	4E
NE CORNER SW1/4, NE1/4	18	86N	4E
SE CORNER SW1/4, NE1/4	18	86N	4E

JOB NO. 298

FILE NO. 03-5540
BOOK 2 PAGE 194

03 SEP 19 PM 2:25

PHYLLIS M. GERLACH
JACKSON COUNTY, IOWA
RECORDER Fee 11.00

Prepared by: SCHNEIDER Land Surveying and Planning, Inc. P.O. Box 105 Peosta, Iowa 52068 563-556-9055

UNITED STATES PUBLIC LAND SURVEY CORNER CERTIFICATE OF

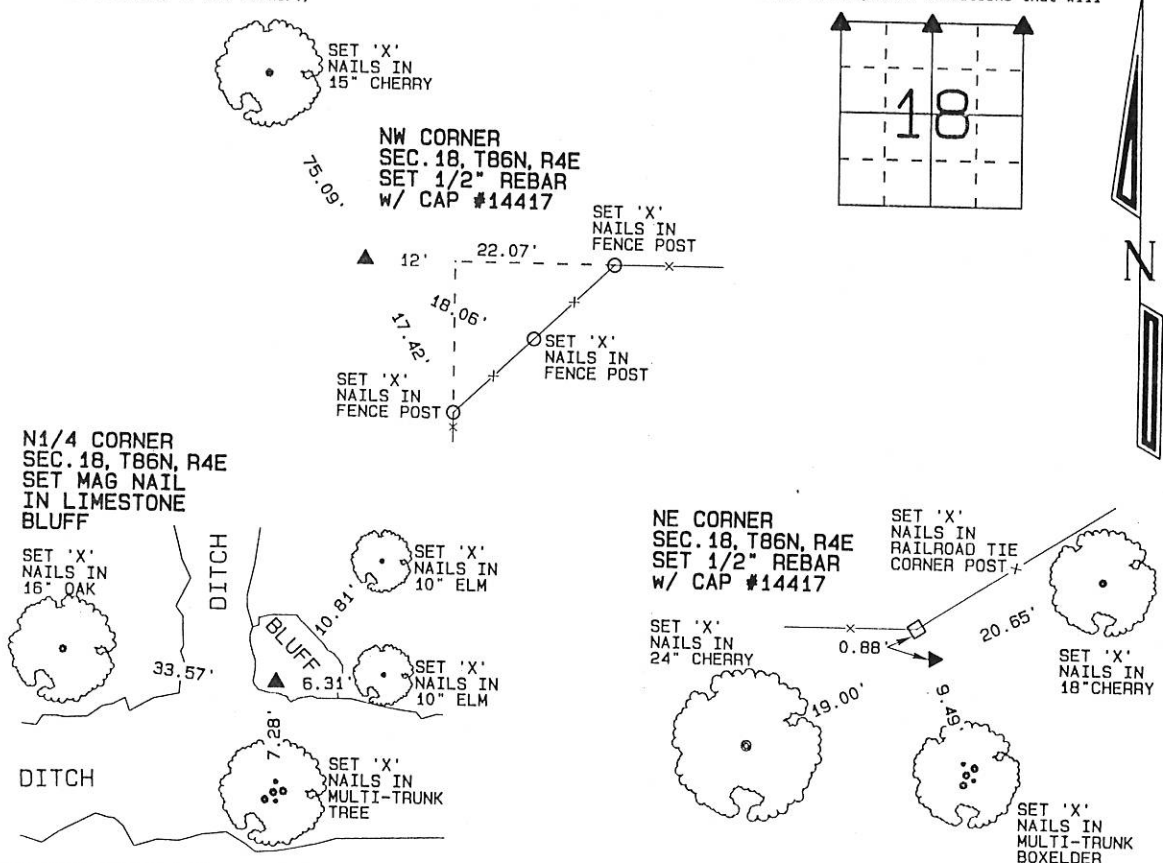
Land Survey Monuments situated in Section 18, Township 86 North, Range 4 East
of the Fifth Principal Meridian, Jackson County, Iowa.
Previously recorded (NONE OF RECORD)

(Show reason for preparing this certificate, the evidence and detailed procedures used in establishing the corner positions and monumentation found or placed.)

Monument Description and Remarks: THE NW CORNER OF SECTION 18, T86N, R4E WAS ESTABLISHED BY
EXTENDING A LINE FROM THE NE CORNER OF SAID SECTION 18 THROUGH THE OCCUPATION FENCE INTERSECTION LOCATED 12' EAST
OF THE NW CORNER. THE MONUMENT WAS PLACED 12' WEST OF THE INTERSECTION AS INDICATED IN THE ADJOINING DEEDS.
THE N1/4 CORNER OF SECTION 18, T86N, R4E WAS ESTABLISHED AT THE INTERSECTION OF A LINE FROM THE S1/4 CORNER
EXTENDED NORTHERLY ALONG AN OCCUPATION FENCE WITH A LINE FROM THE NE CORNER TO THE NW CORNER OF SAID SECTION 18.
THE NE CORNER OF SECTION 18, T86N, R4E WAS ESTABLISHED AT AN EXISTING OCCUPATION FENCE INTERSECTION.

PLAN - VIEW

(Show a minimum of three reference ties to durable physical objects, relevant monuments and physical conditions that will enable recovery of the corner.)

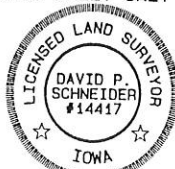


I hereby certify that this land surveying document was prepared and the related survey work was performed by me or under my direct personal supervision and that I am a duly licensed Land Surveyor under the laws of the State of Iowa.

David P. Schneider P.L.S. #14417 Date: 9/18/2003
My license renewal date is December 31, 2003.
Pages or sheets covered by this seal: THIS SHEET ONLY

SCHNEIDER
Land Surveying & Planning, Inc.

P.O. Box 105 Peosta, Iowa 52068
Ph. #563-556-9055 Fax #563-556-9054



List Corners to be Indexed

Corners	Section	Twp	Range
NW	18	86 N	4E
N1/4	18	86 N	4E
NE	18	86 N	4E

JOB NO. 298

Book 2 Page 194