



Document 08-1916

Book 2 Page 620 Type 15 001 Pages 1

Date 5/16/2008 Time 8:40 AM

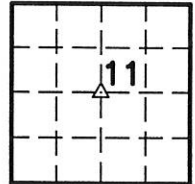
Rec Amt \$7.00

ARLENE SCHAUF, RECORDER/REGISTRAR
JACKSON COUNTY IOWA

Scott A. Steinfadt LS, Ryken Engineering, 711 Park Avenue, Ackley, Iowa 50601 - Ph. 641-847-3273 - Fax 641-847-2303

UNITED STATES PUBLIC LAND SURVEY CORNER CERTIFICATE
OF

Land Survey Monuments situated in Section 11, Township 86 North,
Range 04 East, of the Fifth Principal Meridian, Jackson County, Iowa,
Previously recorded in (see below) in County Recorder's Office
Center - Not Applicable



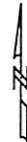
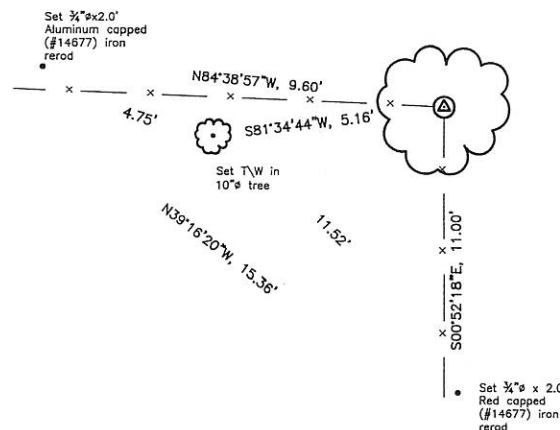
These corners were used for a survey in this section for Scheckel Bros., a partnership.

Legend

BC = Nail with Bottle Cap
BP = Brace Post
CP = Corner Post
CMP = Corrugated Metal Pipe
CM = 4" Sq Concrete Monument with
1/2" ø iron rerod in center (tie to rerod)
CX = Cut 'X'
GP = Gate Post

ID = Inside Diameter
OD = Outside Diameter
PP = Power Pole
PW = Nail with Plastic Washer
RCP = Reinforced Concrete Pipe
RH = Red Head (Nail in wire)
ROW = Right of Way
RW = Nail with Reflective Round Washer

R/W = Iron ROW Rail
SFP = Steel 'T' Post
SW = Nail with Square Metal Washer
TP = Telephone Pedestal
TW = Nail with Round Metal Washer
WFP = Wood Fence Post
X = X Nails

**Center****Monument Description, Remarks, and Plan View:**

Center - History of Corner =

County Engineer's previous and current records do not indicate that corner is monumented.

Corner Recovery = Searched area near Center of Section with a metal detector and tile probe and found no monument. However a 48" ø oak tree with with very old fence wire near the center of said tree, running east, west and south and newer fence wire running south and west was found. Since there are no available county records indicating that the corner has been monumented and the position of the fence wire fits occupation lines well, the center of the 48" ø oak tree was accepted as the Center of Section. Since the center of said tree could not be occupied, witness corners were set as shown above. All ties are plumb distance.

This certificate is being prepared because there are no certificates of file for this corner.

P:\BOB\JACKSONCO\S11_14864E\SCHECKEL4552\dwg\4552corcert.dwg



I hereby certify that this land surveying document
was prepared and the related survey work was
performed by me or under my direct personal
supervision and that I am a duly licensed Land
Surveyor under the laws of the State of Iowa.

Scott A. Steinfadt
SCOTT A. STEINFADT, LS
Date: 03/31/2008 License number: 14677
My license renewal date is December 31, 2008

Pages or sheets covered by this seal: 1

List Corners to be Indexed

Corners	Section	Twp	Range
Center	11	T86N	R04E

Book 2 Page 1220

Page 1 of 1