

00 0536

FILE NO. 1 PAGE 475

00 FEB 18 AM 10:06

IOW ENGINEERS &amp; SURVEYORS, P.C., 4155 PENNSYLVANIA AVE., DUBUQUE, IOWA, (319) 556-2464

PHYLLIS M. GERLACH  
JACKSON COUNTY, IOWA  
RECORDERUNITED STATES PUBLIC LAND SURVEY CORNER CERTIFICATE  
OF

Feb 6.00

LAND SURVEY MONUMENTS SITUATED IN SECTION 6, TOWNSHIP 86 NORTH, RANGE 5 EAST  
OF THE FIFTH PRINCIPAL MERIDIAN, JACKSON COUNTY, IOWA.  
PREVIOUSLY RECORDED IN \_\_\_\_\_ IN COUNTY RECORDER'S OFFICE.

(Show reason for preparing this certificate, the evidence and detailed procedures used in establishing the corner positions and monumentation found or placed.)

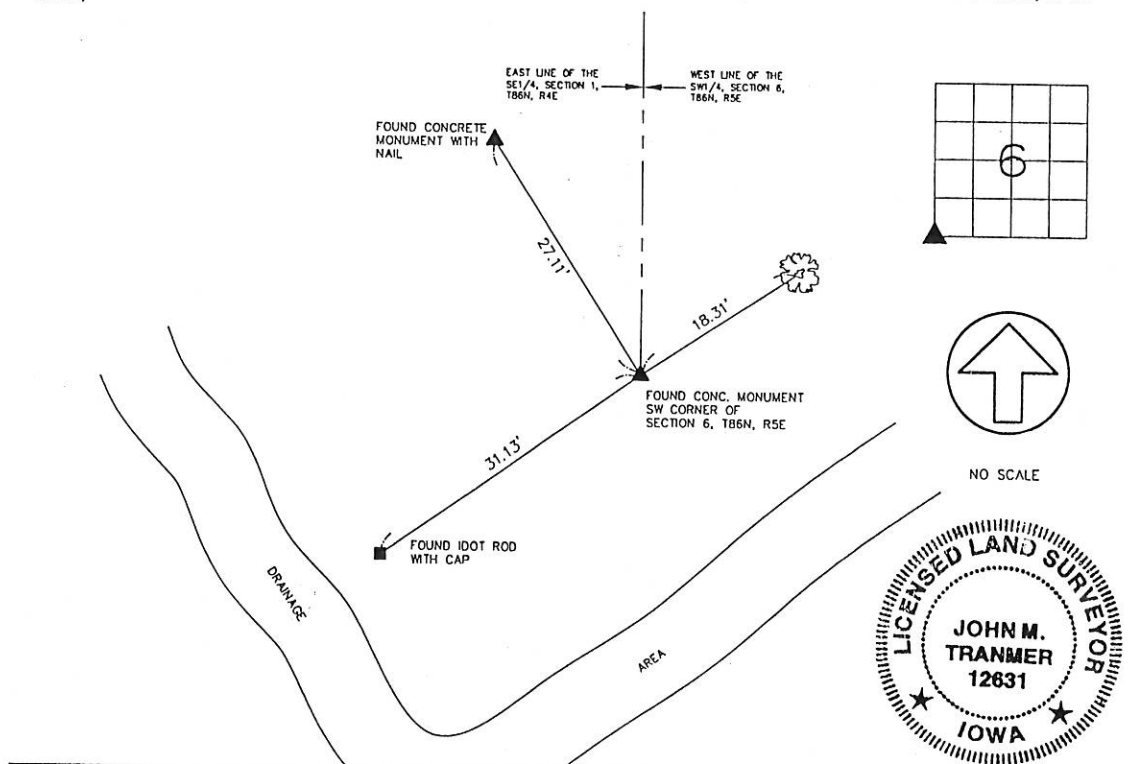
Monument Description and Remarks: \_\_\_\_\_

SW CORNER, SECTION 6, T86N, R5E - FOUND STANDARD CONCRETE MONUMENT

BURIED 4 INCHES

## PLAN - VIEW

(Show a minimum of three reference ties to durable physical objects, relevant monuments and physical conditions that will enable recovery of the corner.)

I HEREBY CERTIFY THAT THE SURVEY WORK WAS COMPLETED AND THIS CERTIFICATE  
WAS PREPARED BY ME OR UNDER MY DIRECT PERSONAL SUPERVISION AND THAT  
I AM A DULY REGISTERED LAND SURVEYOR UNDER THE LAWS OF THE STATE OF IOWA.

JOHN M. TRANMER REG. NO. 12631

DATE: 2-17-00

MY REGISTRATION EXPIRES DECEMBER 31, 1996

## LIST CORNERS TO BE INDEXED

CORNERS	SECTION	TWP	RANGE
SW CORNER	6	T86N	R5E

ENGINEERS AND  
SURVEYORS P.C.

Iowa, Illinois, Wisconsin

4155 Pennsylvania Ave.  
Dubuque, Ia. 52002  
(319) 556-2464Guttenberg, IA  
Galea, IL  
Cuba City, WI

## MONUMENT RECORD

COUNTY: JACKSON

TOWNSHIP: BELLEVUE

DATE: 9-30-99  
REVISED:FIELD  
BOOK NO. 371PROJ.  
NO. 997111INDEX  
NO.

00 0537

FILE NO. \_\_\_\_\_  
PAGE 416

00 FEB 18 AM 10:06

IHW ENGINEERS & SURVEYORS, P.C. 4155 PENNSYLVANIA AVE, DUBUQUE, IOWA, 52002  
PHYLLIS M. GERLACH  
JACKSON COUNTY, IOWA  
RECORDERUNITED STATES PUBLIC LAND SURVEY CORNER CERTIFICATE  
OF *Fee \$6.00*LAND SURVEY MONUMENTS SITUATED IN SECTION 6, TOWNSHIP 86 NORTH, RANGE 5 EAST  
OF THE FIFTH PRINCIPAL MERIDIAN, JACKSON COUNTY, IOWA.  
PREVIOUSLY RECORDED IN \_\_\_\_\_ IN COUNTY RECORDER'S OFFICE.

(Show reason for preparing this certificate, the evidence and detailed procedures used in establishing the corner positions and monumentation found or placed.)

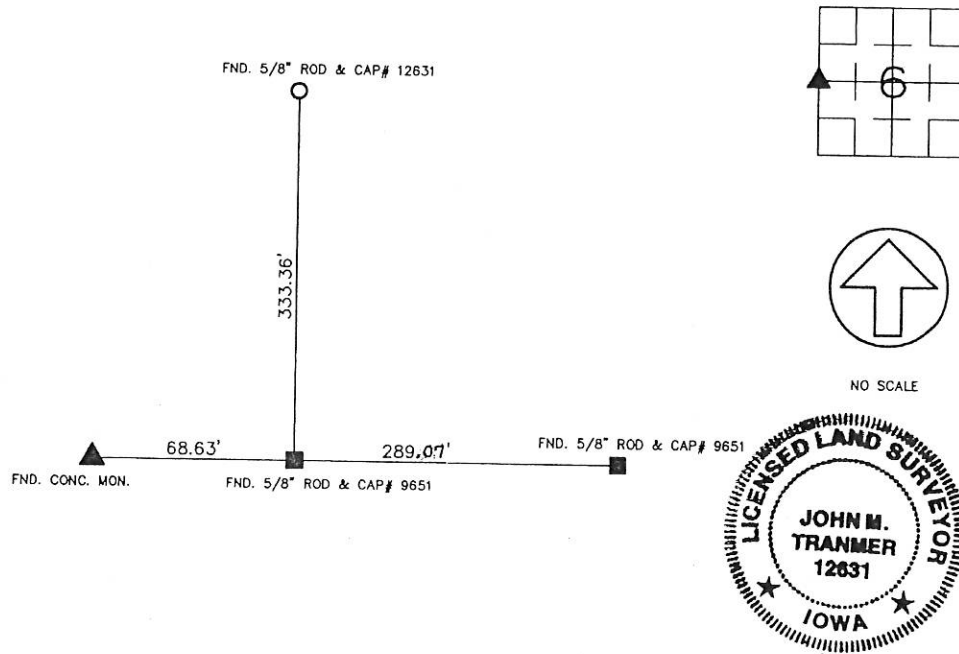
Monument Description and Remarks: \_\_\_\_\_

SW CORNER OF THE NW 1/4, SEC. 6, T86N, R5E

FOUND 5/8" IRON ROD WITH CAP NO. 9651

## PLAN - VIEW

(Show a minimum of three reference ties to durable physical objects, relevant monuments and physical conditions that will enable recovery of the corner.)

I HEREBY CERTIFY THAT THE SURVEY WORK WAS COMPLETED AND THIS CERTIFICATE  
WAS PREPARED BY ME OR UNDER MY DIRECT PERSONAL SUPERVISION AND THAT  
I AM A DULY REGISTERED LAND SURVEYOR UNDER THE LAWS OF THE STATE OF IOWA.*John M. Tranmer*  
JOHN M. TRANMER REG. NO. 12631DATE: 2-17-00  
MY REGISTRATION EXPIRES DECEMBER 31, 2000

## LIST CORNERS TO BE INDEXED

CORNERS	SECTION	TWP	RANGE
SW COR, NW 1/4	6	T86N	R5E

ENGINEERS AND  
SURVEYORS P.C.

Iowa, Illinois, Wisconsin

4155 Pennsylvania Ave.  
Dubuque, Ia. 52002  
(319) 556-2464Guttenberg, IA  
Galena, IL  
Osaka City, WI

## MONUMENT RECORD

COUNTY: JACKSON  
TOWNSHIP: BELLEVUEDATE: 2-1-00  
REVISED:FIELD  
BOOK NO. 371PROJ.  
NO. 997111INDEX  
NO.



Document 06-3716

Book 2 Page 483 Type 15 001 Pages 1

Date 9/25/2006 Time 1:48 PM

Rec Amt \$7.00

ARLENE SCHAUF, RECORDER  
JACKSON COUNTY IOWA

Prepared by Wm Burger LandSurveyors 510 3rd Street West Court, Worthington, Iowa Phone 563 - 855 2028

# UNITED STATES PUBLIC LAND SURVEY CORNER CERTIFICATE

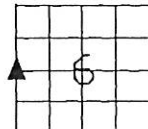
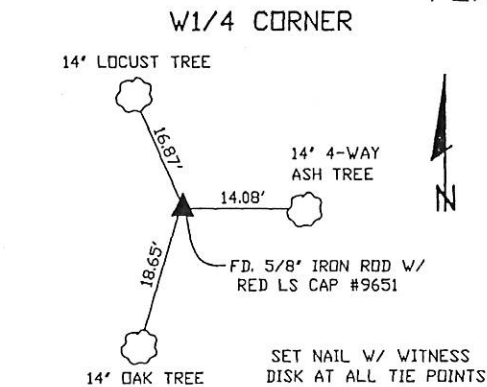
Land Survey Monuments situated in Section 6, Township 86N, Range 5E, of the Fifth Principal Meridian, Jackson County, Iowa. Previously recorded in SEE NOTE In the Office of the County Recorder

Monument Description and Remarks:

W1/4 CORNER - FOUND 5/8" IRON ROD W/ RED LS CAP #9651

NOTE: THE W1/4 CORNER WAS PREVIOUSLY RECORDED IN THE OFFICE OF THE JACKSON COUNTY RECORDER, BOOK 1, PAGE 123, AND BOOK 1, PAGE 225

## PLAN VIEW



SEC. 6 TWP. 86N RANGE 5E

## CORNERS TO BE INDEXED

W1/4 CORNER 6 86N 5E



I hereby certify that this land surveying document was prepared and related survey work was performed by me or under my direct personal supervision and that I am a duly licensed Land Surveyor under the laws of the State of Iowa.

William H. Burger 6/08/06  
William H. Burger Date

License number 12642

My license renewal date is December 31, 2006

Pages or Sheets covered by this seal Sheet 1 of 1

Book 2 Page 483